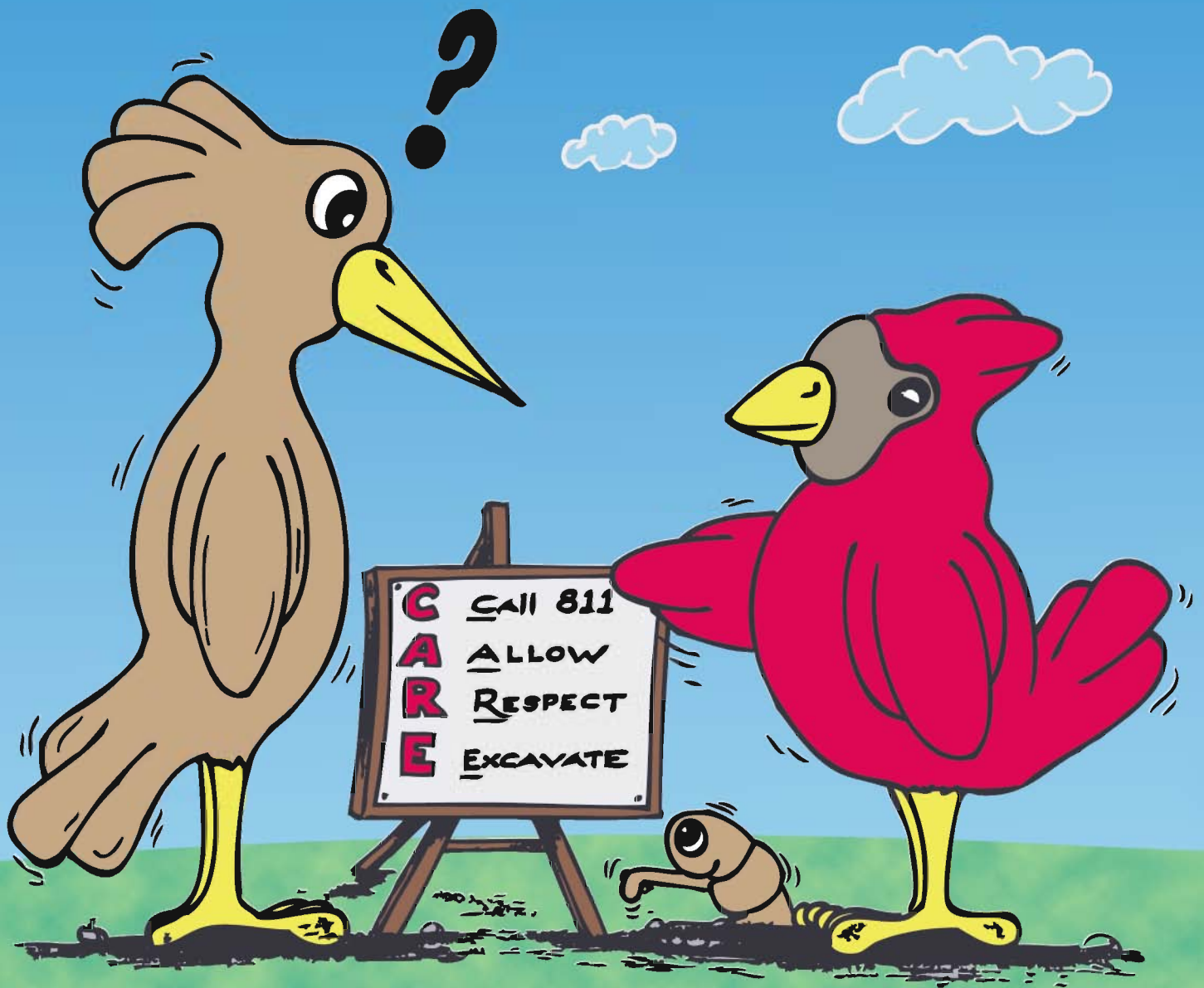


Wally's Digging Adventure

Starring:

Care E. Cardinal, Wally & Wiggles



Maria F. Tahamtani

Illustrated by Douglas W. Dellinger

Dear Friends,

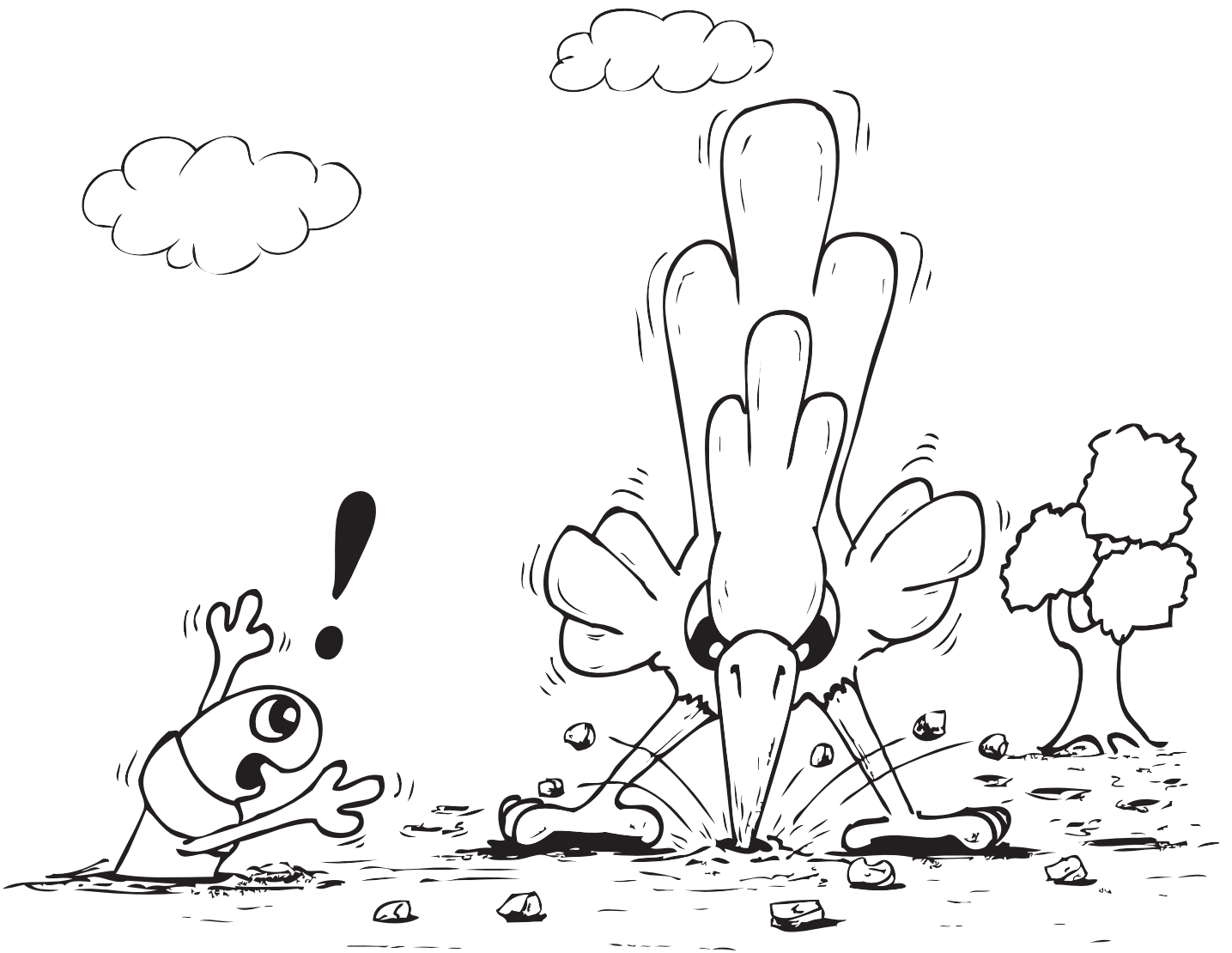
I hope you are excited to have a coloring book in your hands! I mean, what's not to love about coloring?! Right? Well, this is my very first book and I loved writing it! I feel that this book really gave me a chance to connect with you even though I haven't met you yet! I hope that Care E., Wally, Wiggles, and I can teach you to dig with CARE in this fun and exciting way! Digging with CARE is very important and is a process that everyone must follow because it's the law. I tried to make learning how to "CARE" for our underground utilities a great experience for you and for all your friends. Once you have finished coloring, try to challenge yourself and take the quiz at the end! If you earn the certificate and become a deputy sheriff of underground town, make sure you then teach everyone you know about digging with CARE!

Have fun and enjoy!

Maria Tahamtani
Age 10

Prepared by
Virginia State Corporation Commission
Division of Utility and Railroad Safety

This publication is intended for informational purposes only. The Commission does not assume any responsibility for the acts or conduct of any reader of this publication.

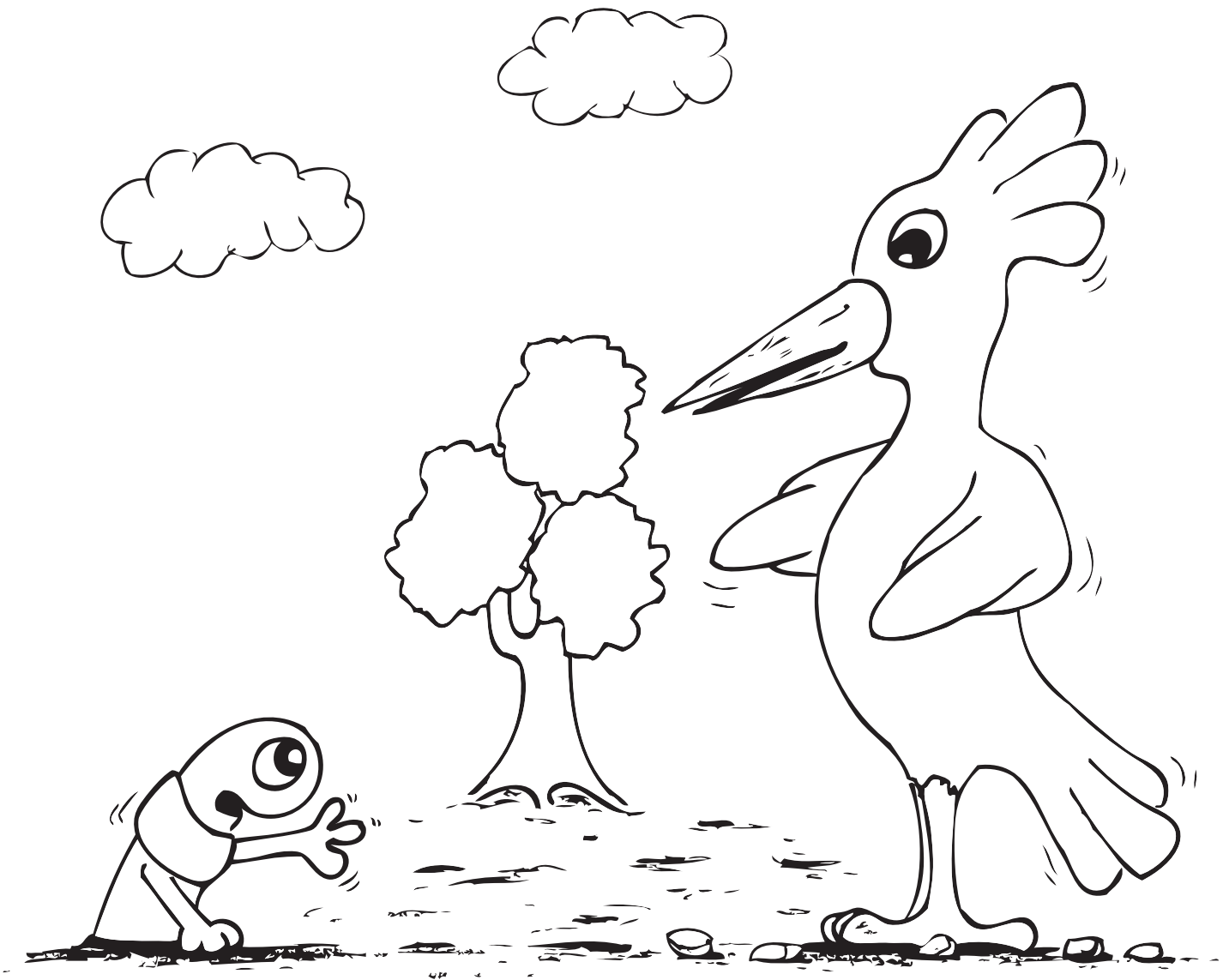


Wally

Poke... poke, poke, po-poke

Wiggles

Hey!!! Quit poking on me. What are you doing? It's not easy going around your dirty beak...and all the other stuff that's here underground!



Wally

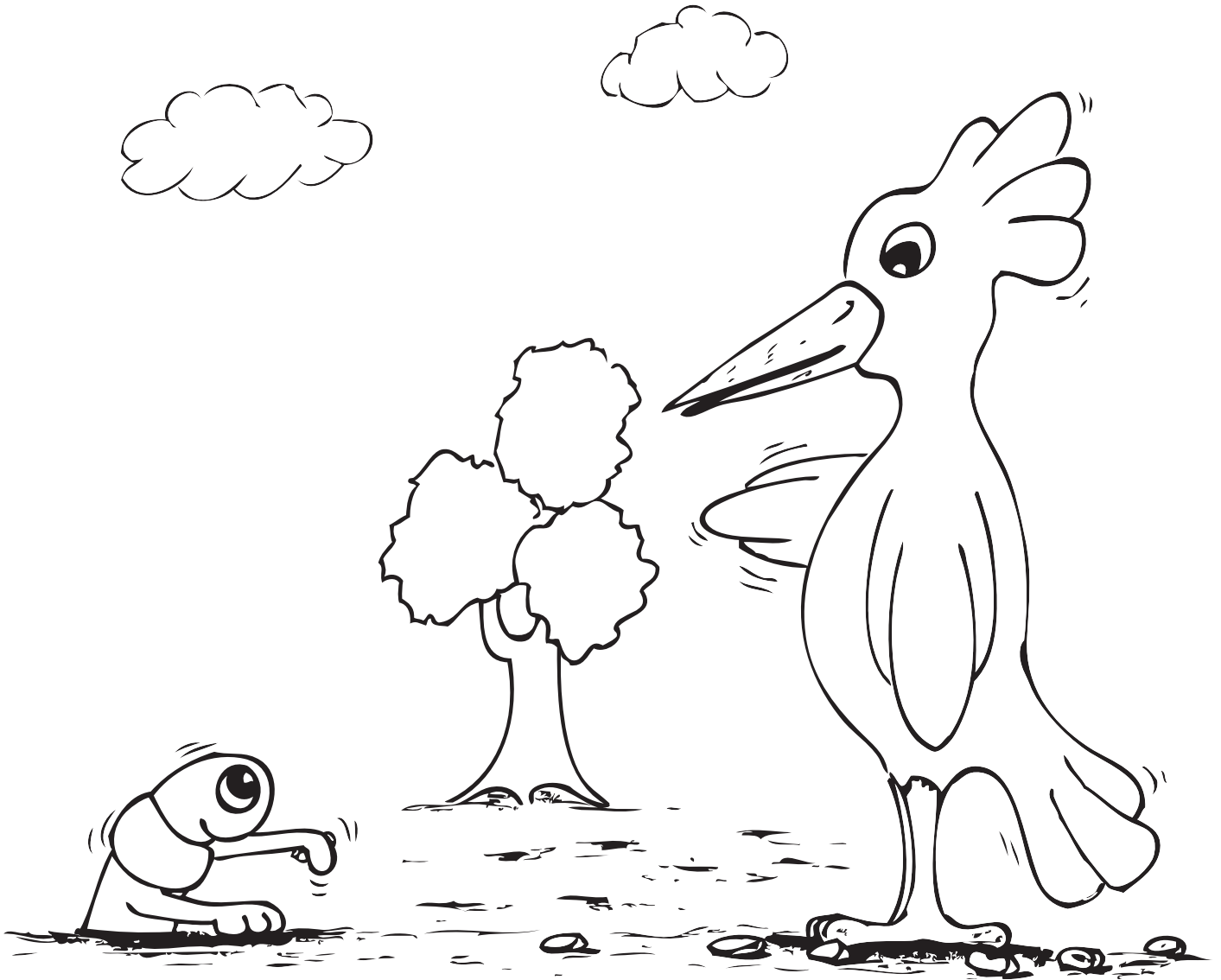
What?! I can't find any food up in that tree so I came down here to catch you! Besides, I thought you and your friends were the only ones down underground...and what's with the dirty beak?

Wiggles

...OH! Well then you have no idea what is under this soil!

Wally

Since you think you know more than I do, go ahead and tell me!



Wiggles

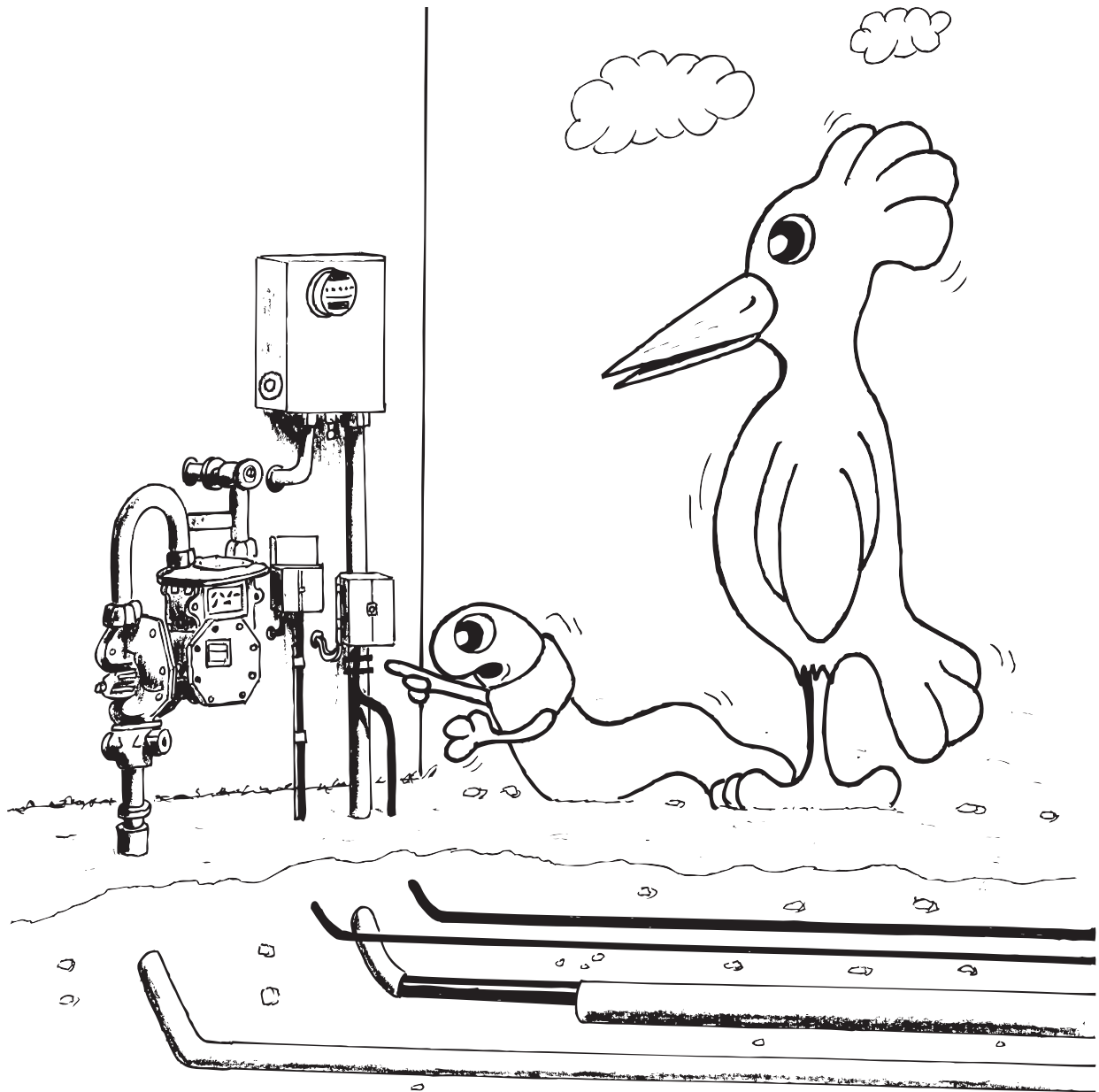
Of course I know! I live underground! Why, there are rotten apple cores, cans and trash but...

Wally

See, I told you that you didn't know anymore than I did. So, there's your worms and trash. I...

Wiggles

No, no, no! That's not all. As I was saying, the hardest part to get by, around and over are the pipelines and cables that are buried here underground.



Wally

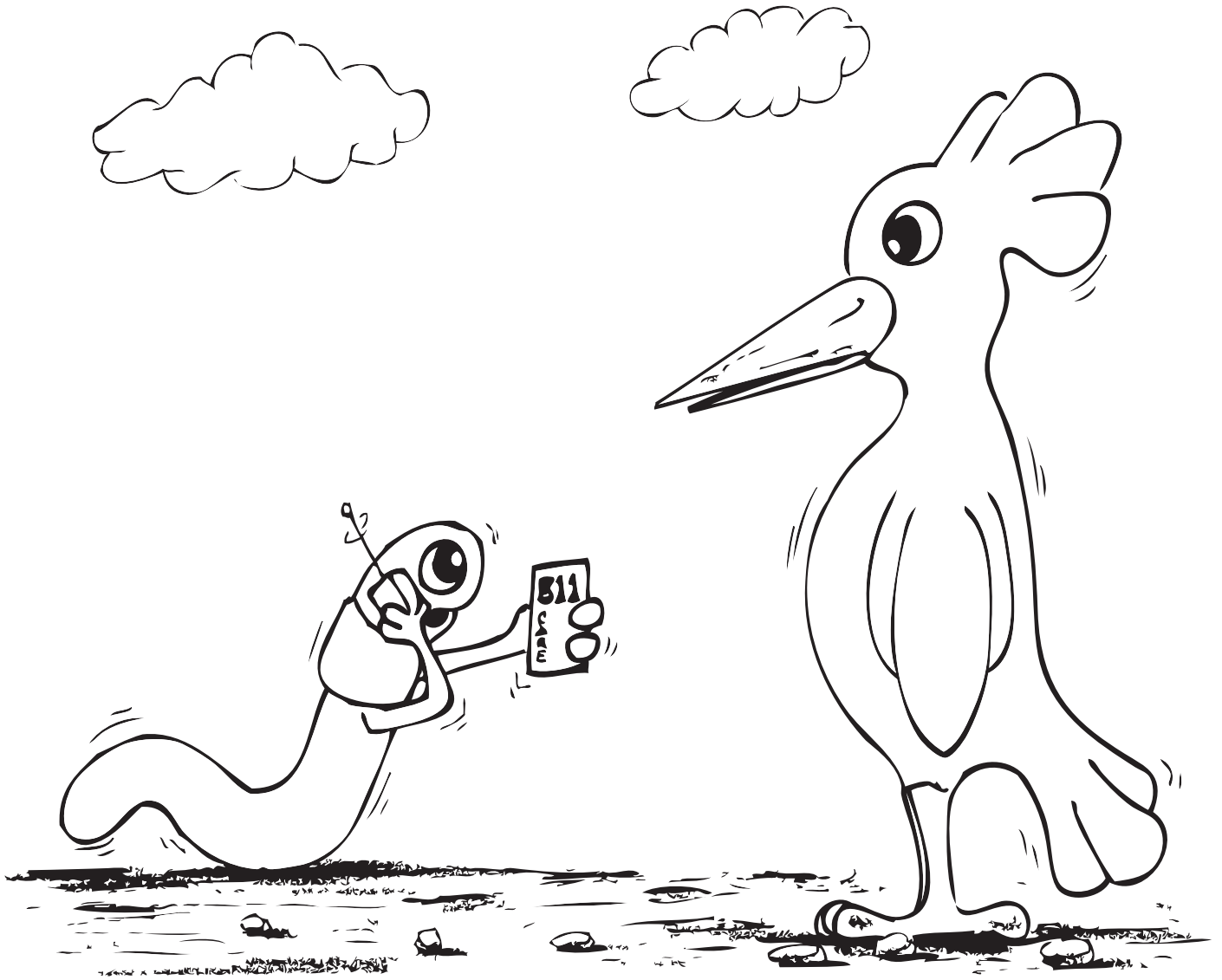
Pipelines?! Cables?! What are they?

Wiggles

Yes, pipelines. Pipelines are big tubes in the ground. They can hold different utilities, such as gas, water, and sewer. Pipelines can be big, small, or lots of sizes in between. And, cables can carry electricity, phone, cable TV and much more!

Wally

I still don't believe you.



Wiggles

Here, I'll prove it to you.

Wally

I bet you can't!

Wiggles

Oh, but I will. I'll call my friend the cardinal...Care E. Cardinal to be exact.

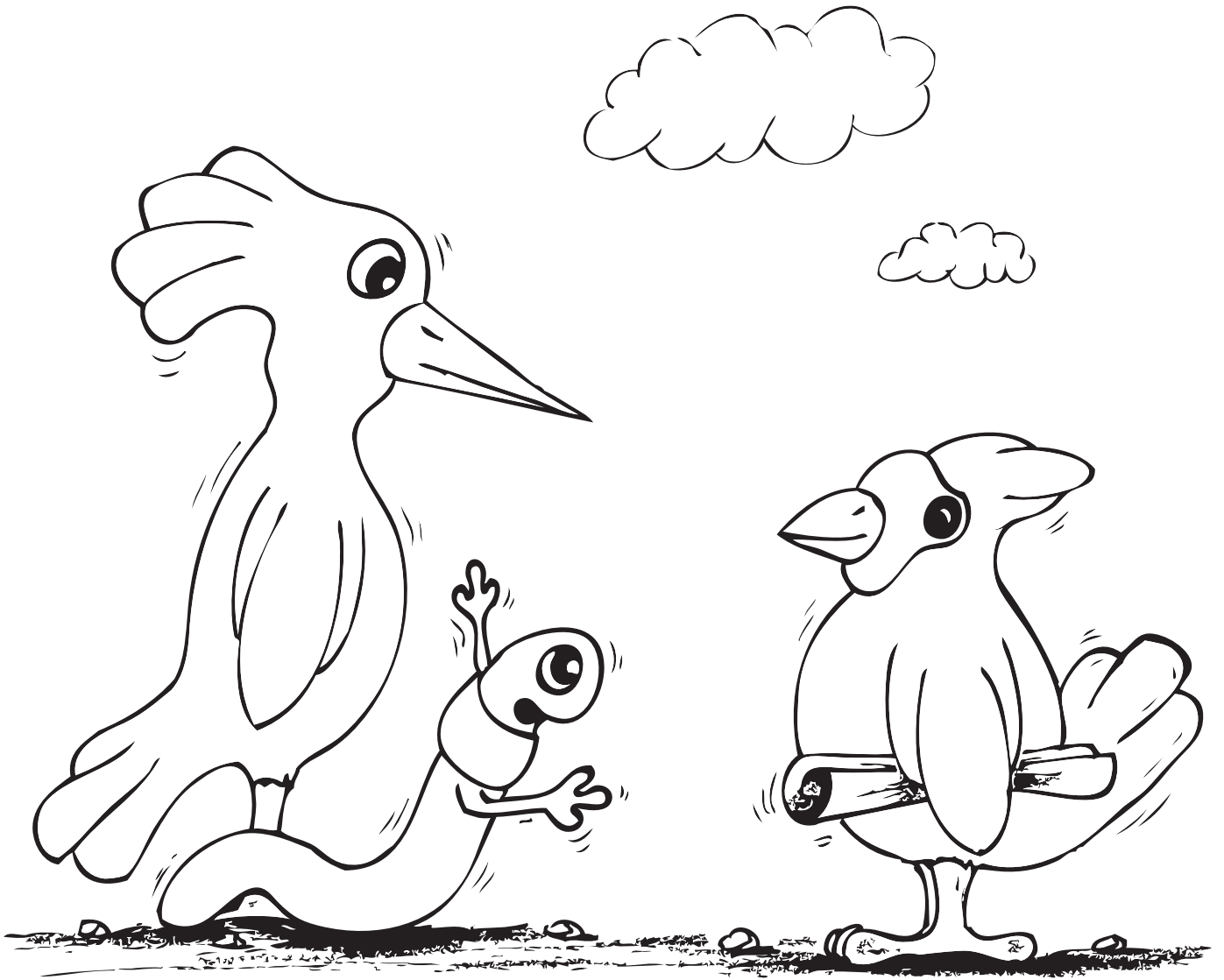


Wally

Listen Wiggles, I bet you haven't called anyone! I bet you are playing a trick on me just so I won't eat you! I bet you are just pretending to...

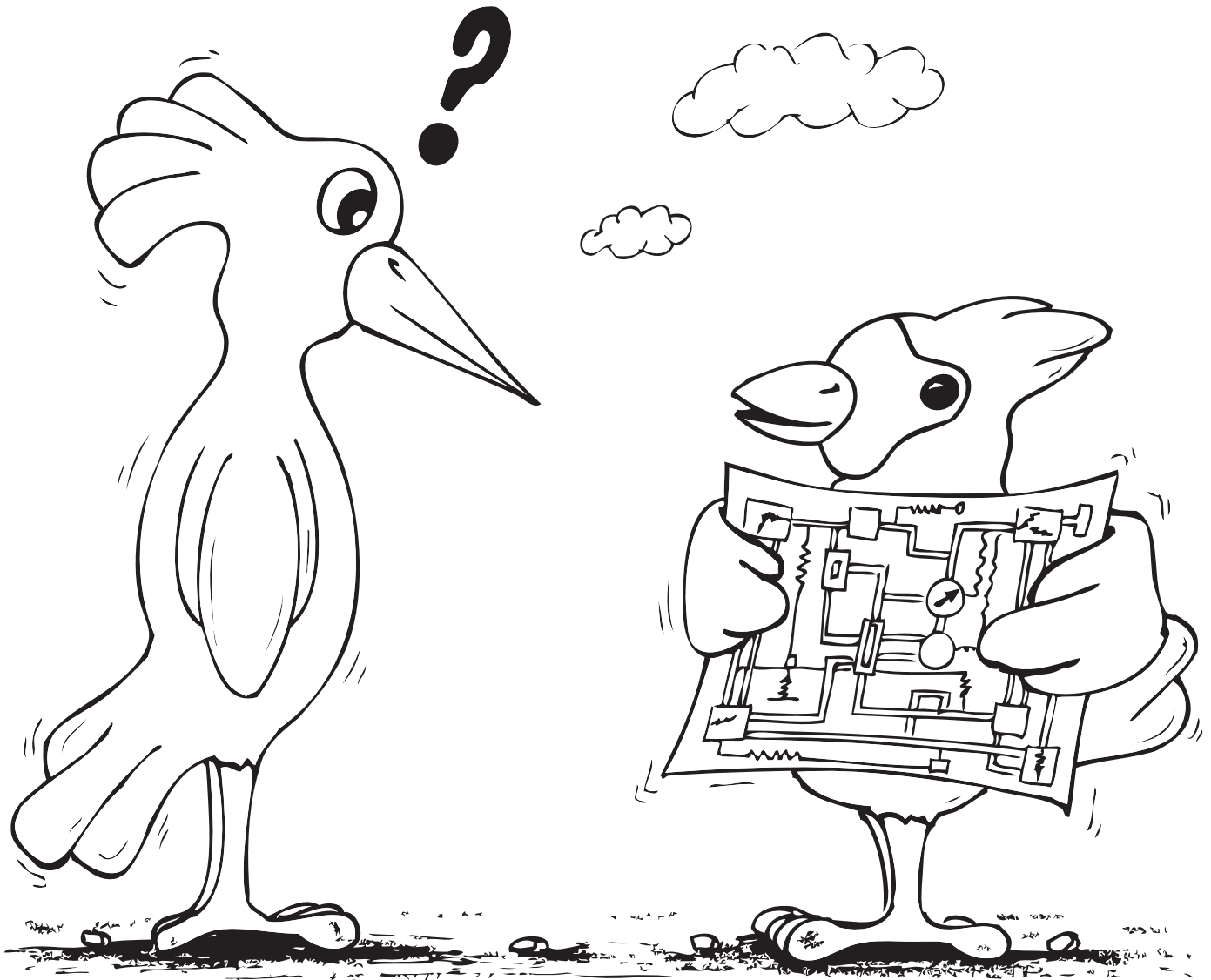
Wiggles

See...I told you that I called Care E. to come!



Wiggles

Can you explain what pipelines do, what the humans do before they dig, and why Mr. Wally here could get a lot of people, including himself, hurt if he pecks at one of them by accident while trying to get me?



Care E.

Certainly I can! I can explain that easily, but Wally had better listen closely because it is really important. Wally? Wally? Are you listening?

Wally

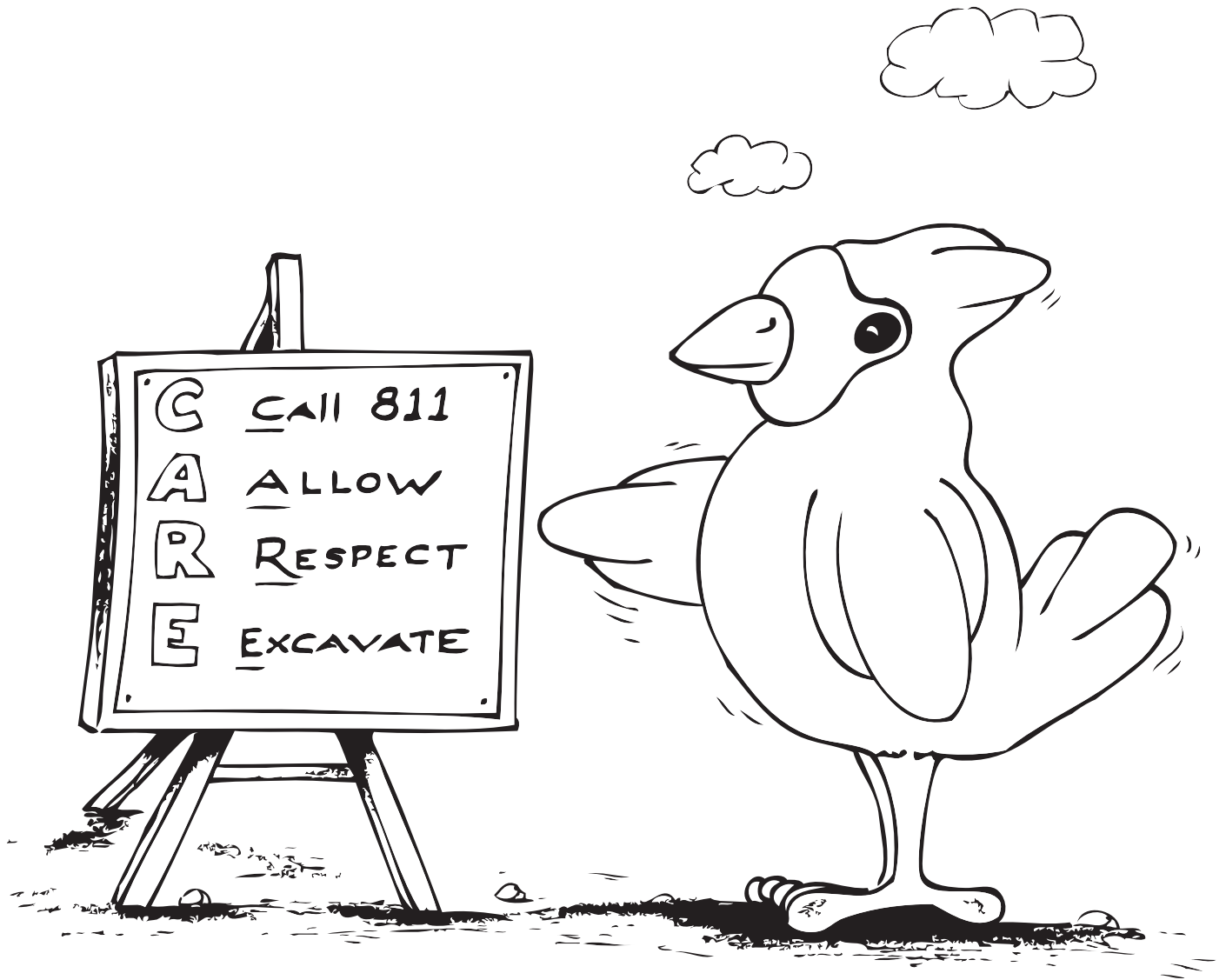
Hmmmm? Me? Yes, I am listening now.

Care E.

Ok, Let's start at the beginning. Underground, there is a maze of pipes and cables which carry important utilities to our homes and businesses! When we dig, we must dig with CARE.

Wally

What is CARE?



Care E.

The word CARE is an acronym. This means that each letter in the word CARE stands for something we are supposed to remember to do. It is a fun way to remember things that are important!

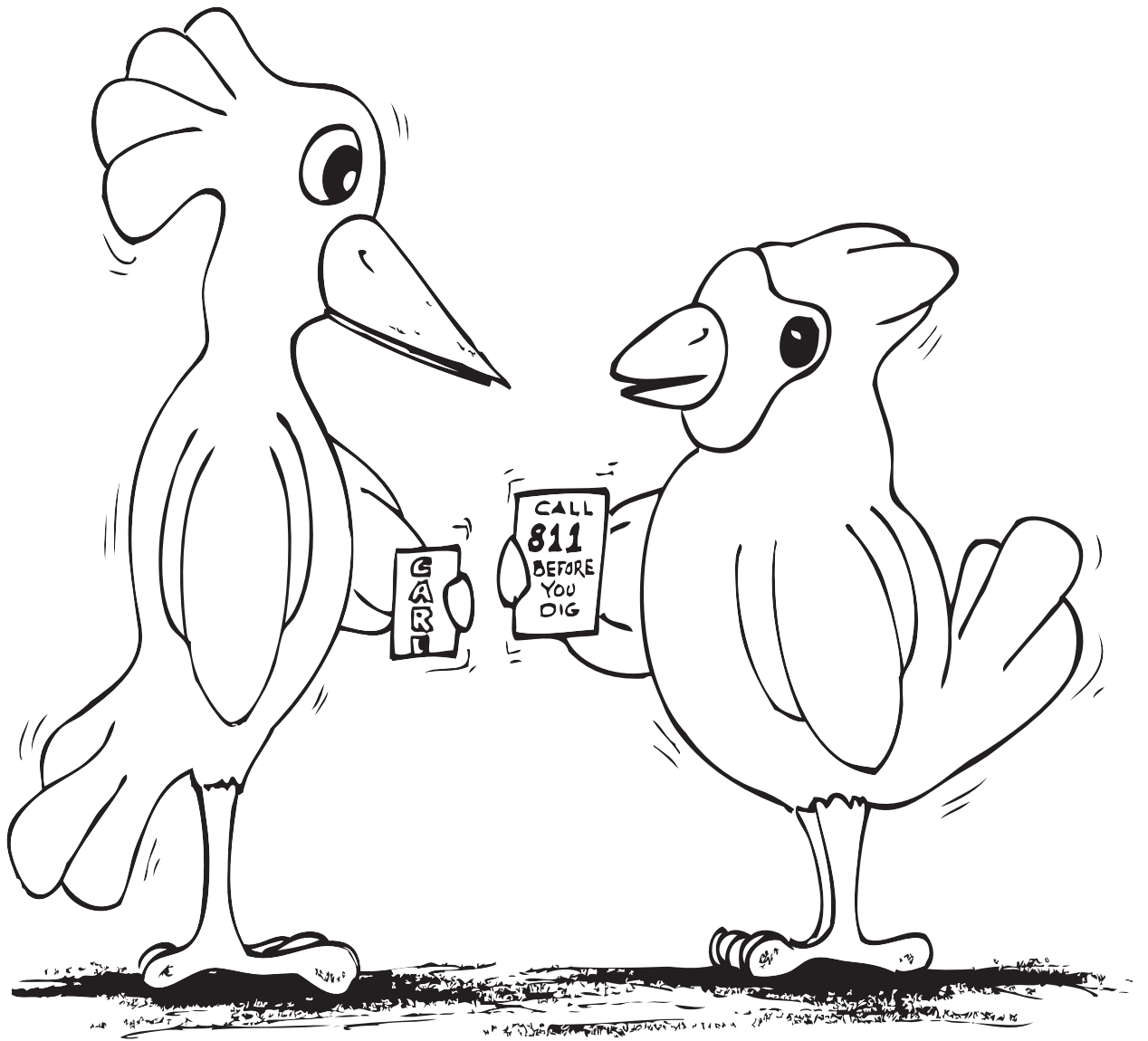
CARE means:

C - Call Miss Utility at **811** before you dig.

A - Allow the required time for utility markings.

R - Respect the marks.

E - Excavate carefully.

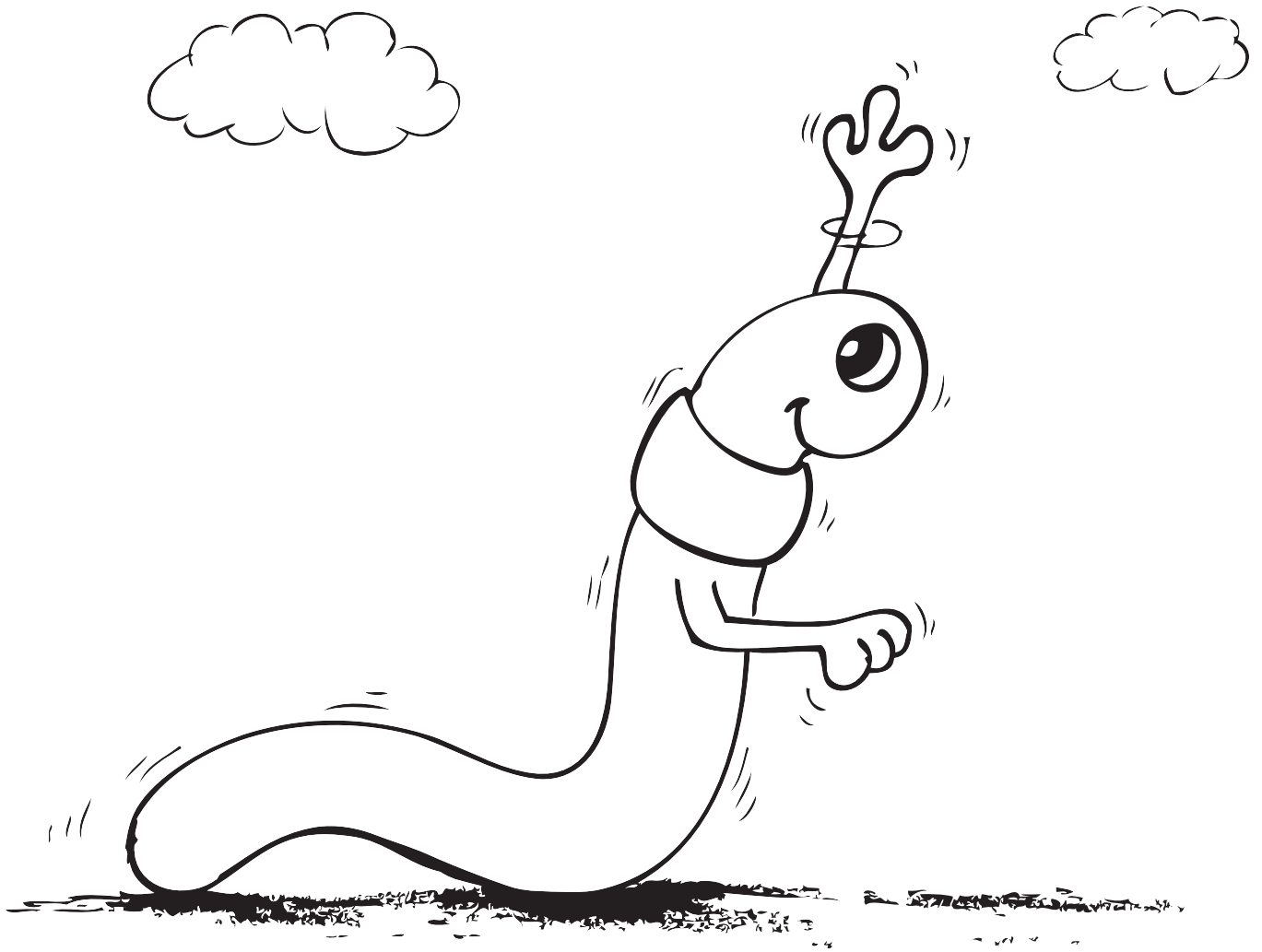


Care E.

Wally you need to be smart and do what the humans do. You need to call **811** before you dig, or go find the nearest rotten tree instead for food.

Wally

Thank you Mr. Care E. Cardinal, I will! And, I will make sure my other friends know about digging with CARE too!



Wiggles

Whew...That was a close one! I was just about to become his snack but instead, I sure taught him a thing or two! I guess I wiggled out of that one just in time!

THE END

Wiggle's Underground Adventure

Help Wiggles go through the maze of underground utilities to get to the C.A.R.E. logo.



Care E. Cardinal's Word Search

ELECTRICITY

BEFORE

GREEN

WATER

BLUE

RED

CABLE TV

ORANGE

PHONE

CARE

DIG

GAS

YELLOW

SAFETY

SEWER

CALL

OIL



Let's test your underground safety knowledge by answering these questions.

1. What are underground pipelines and what do they do for us?

- A. Pipelines are tubes that carry gas, oil, water and sewer
- B. Pipelines are places for wiggles to hide

2. What do underground cables do for us?

- A. Cables show wiggles where to go
- B. Cables carry electricity, phone, cable TV, etc.

3. What number must we call before we dig?

4. What does CARE mean?

C means: _____

A means: _____

R means: _____

E means: _____

5. What do yellow markings on the ground mean?

If you answered these questions correctly, put your name on the certificate and keep it. If not study this book and try again.



Congratulations!



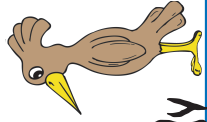
Name: _____

You are now officially the Deputy Sheriff of Underground Town. Since you know all about Underground Utility Safety, you can help Care E. Cardinal and teach others to protect our underground town.



Care *E* Cardinal

Care E. Cardinal



Wally

Wally



Wiggles

Wiggles

About the Author Maria F. Tahamtani



Maria Tahamtani is a 4th grade student at Cool Spring Elementary School in Hanover County, Virginia. From a very young age, Maria has always loved to read and to write stories of her own. Maria's favorite subjects in school are Math, Science, Art, Music, GT and Creative Writing.







About the Illustrator Douglas W. Dellinger



Doug is a self taught artist, who resides in the Winchester area, of the Shenandoah Valley, Virginia. He creates his art work from his home studio. Doug retired from Verizon in 2001, after 32 years of service, and is currently employed by Ivy H. Smith, on the Verizon Fiber to the Premise (“FTTP”) project.



Underground Utility Marking Colors

-  RED - Electric Power Lines, Cables, Conduit and Lighting Cables
-  YELLOW - Gas, Oil, Steam, Petroleum or Gaseous Materials
-  ORANGE - Communications, Alarm or Signal Lines, Cables or Conduit
-  BLUE - Potable Water
-  PURPLE - Reclaimed Water, Irrigation and Slurry Lines
-  GREEN - Sewer and Drain Lines
-  PINK - Temporary Survey Markings
-  WHITE - Proposed Excavation

Contacting Miss Utility:

Miss Utility 
Check Ticket Status1-800-552-3120