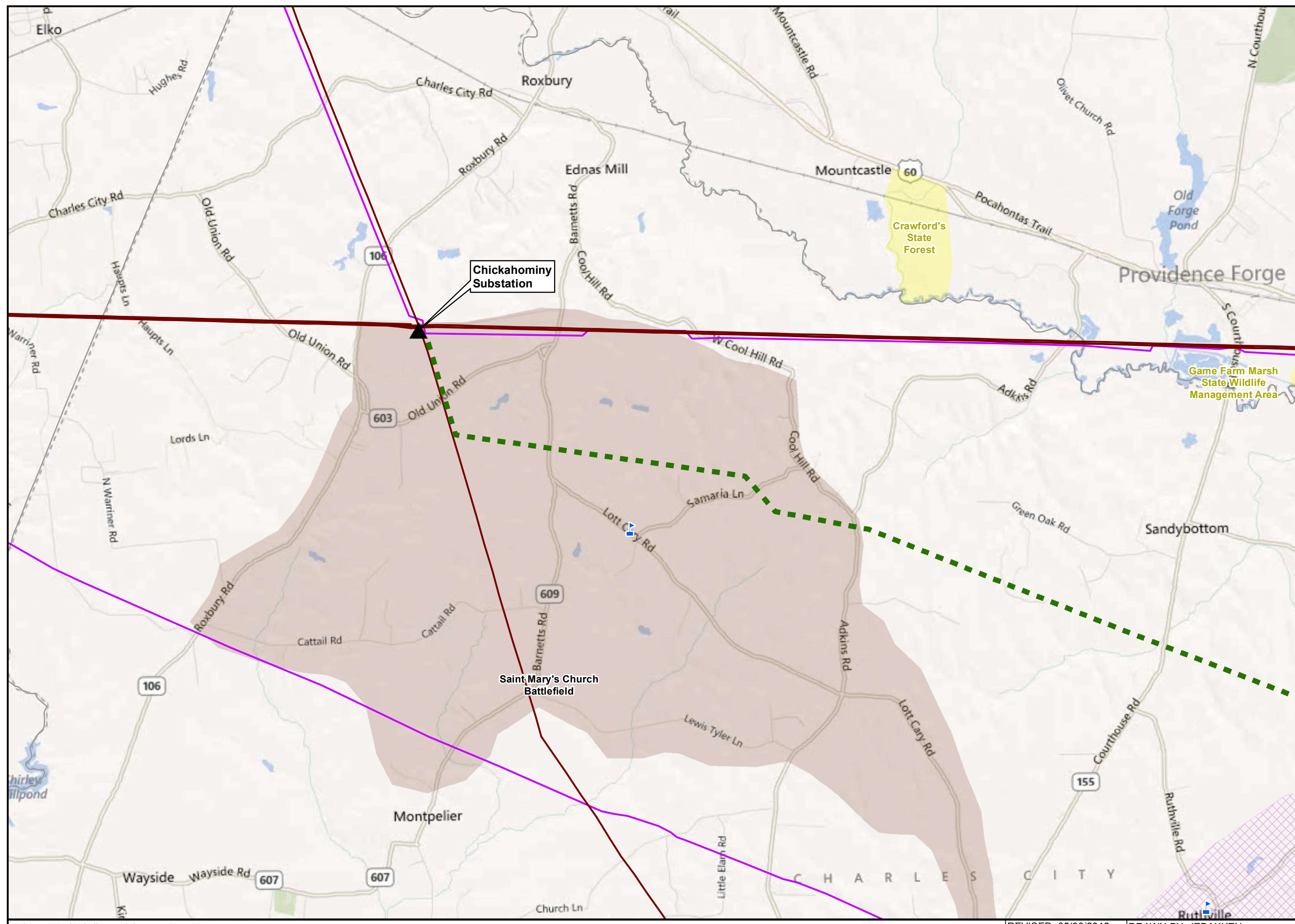
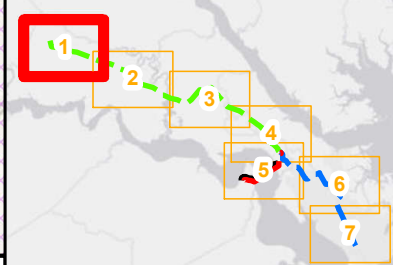
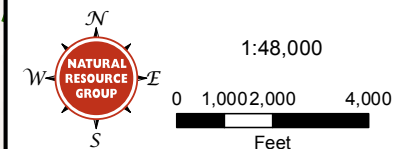


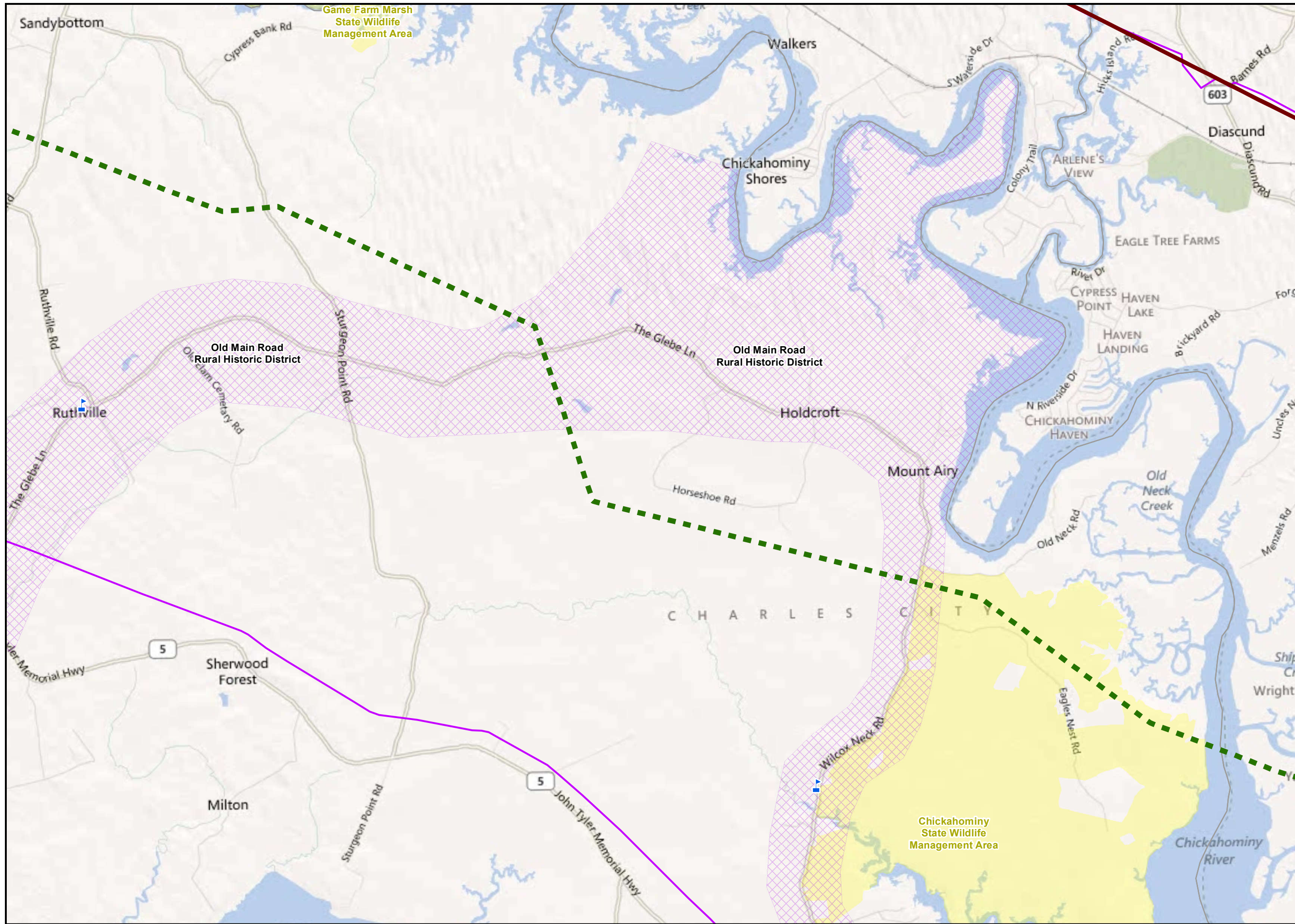


Surry - Skiffes Creek 500 kV Transmission Line
Skiffes Creek - Wheelton 230 kV Transmission Line
Skiffes Creek 500-230-115 kV Switching Station

Attachment II.A.2

- Existing Substation/ Switching Station
- Proposed Switching Station
- 500 kV Proposed Route (Surry-Skiffes Creek)
- James River Crossing Variation 1
- James River Crossing Variation 2
- James River Crossing Variation 3
- 500 kV Alternative Route (Chickahominy-Skiffes Creek)
- 230 kV Proposed Route (Skiffes Creek-Wheelton)
- Golf Course
- School
- Hospital
- Public Airport
- Military Airport
- Existing Transmission Line
- Existing Pipeline
- Recreation Area
- Historic Architecture Site
- Historic Battlefield

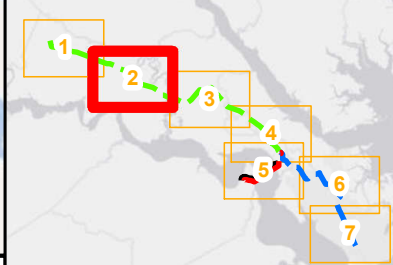
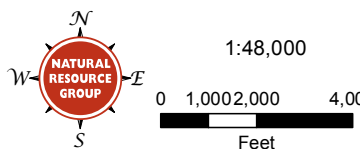




**Surry -
Skiffes Creek 500 kV
Transmission Line
Skiffes Creek -
Wheelton 230 kV
Transmission Line
Skiffes Creek
500-230-115 kV
Switching Station**

Attachment II.A.2

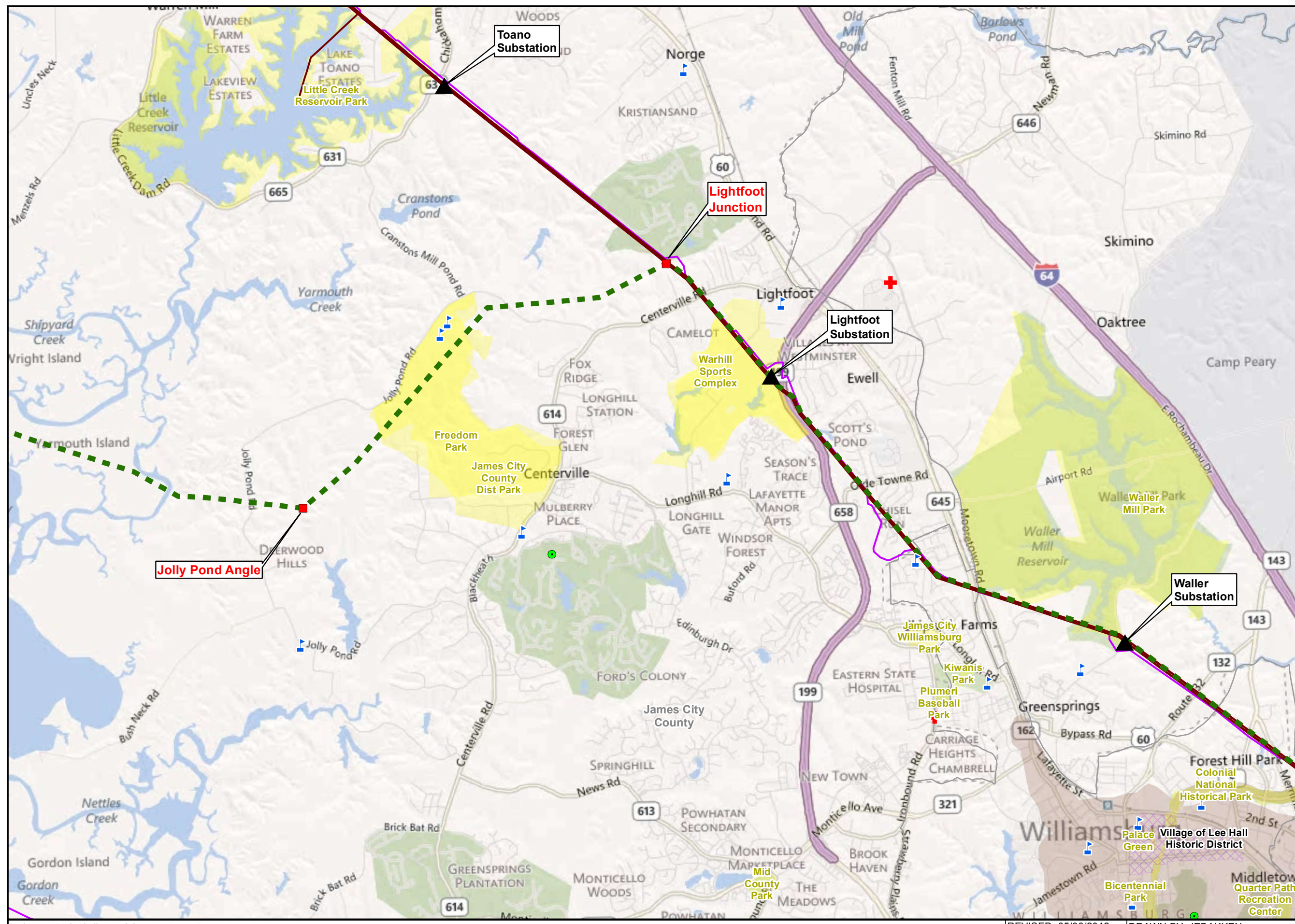
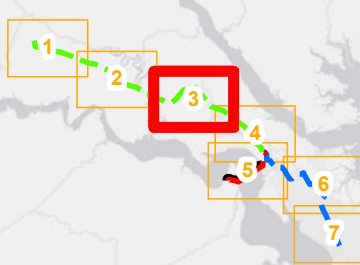
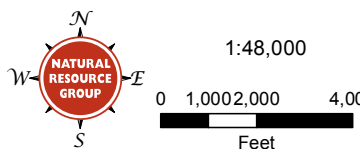
- Existing Substation/
Switching Station
- Proposed
Switching Station
- 500 kV Proposed Route
(Surry-Skiffes Creek)
- James River
Crossing Variation 1
- James River
Crossing Variation 2
- James River
Crossing Variation 3
- 500 kV Alternative Route
(Chickahominy-Skiffes Creek)
- 230 kV Proposed Route
(Skiffes Creek-Wheelton)
- Golf Course
- School
- Hospital
- Public Airport
- Military Airport
- Existing Transmission Line
- Existing Pipeline
- Recreation Area
- Historic Architecture Site
- Historic Battlefield



Surry - Skiffes Creek 500 kV Transmission Line
Skiffes Creek - Wheelton 230 kV Transmission Line
Skiffes Creek 500-230-115 kV Switching Station

Attachment II.A.2

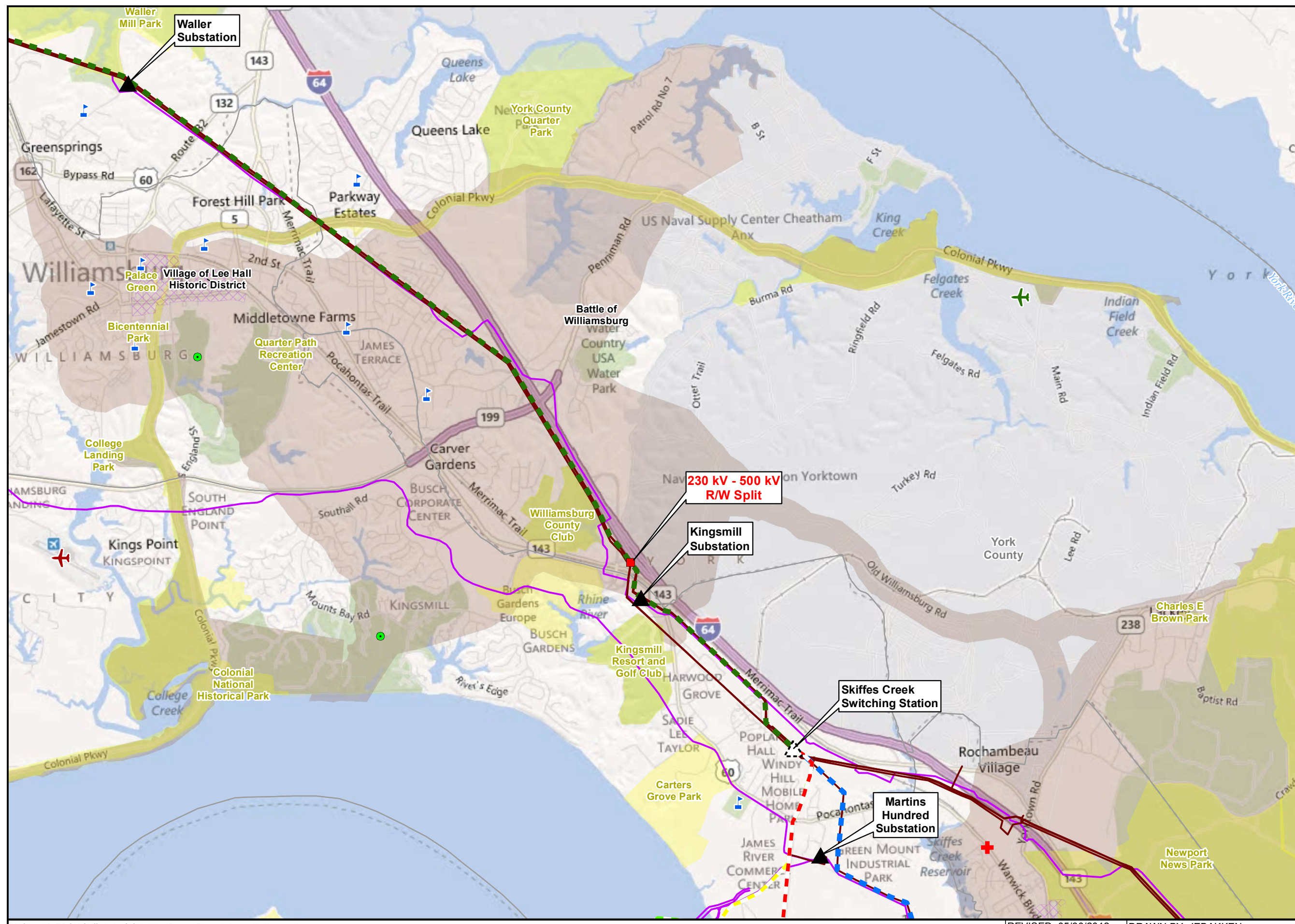
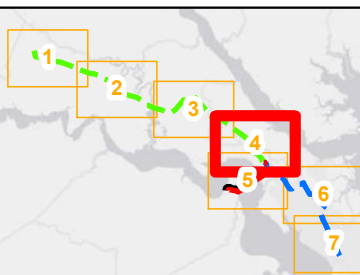
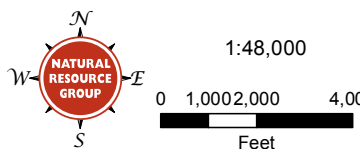
- Existing Substation/ Switching Station
- Proposed Switching Station
- 500 kV Proposed Route (Surry-Skiffes Creek)
- James River Crossing Variation 1
- James River Crossing Variation 2
- James River Crossing Variation 3
- 500 kV Alternative Route (Chickahominy-Skiffes Creek)
- 230 kV Proposed Route (Skiffes Creek-Wheelton)
- Golf Course
- School
- Hospital
- Public Airport
- Military Airport
- Existing Transmission Line
- Existing Pipeline
- Recreation Area
- Historic Architecture Site
- Historic Battlefield

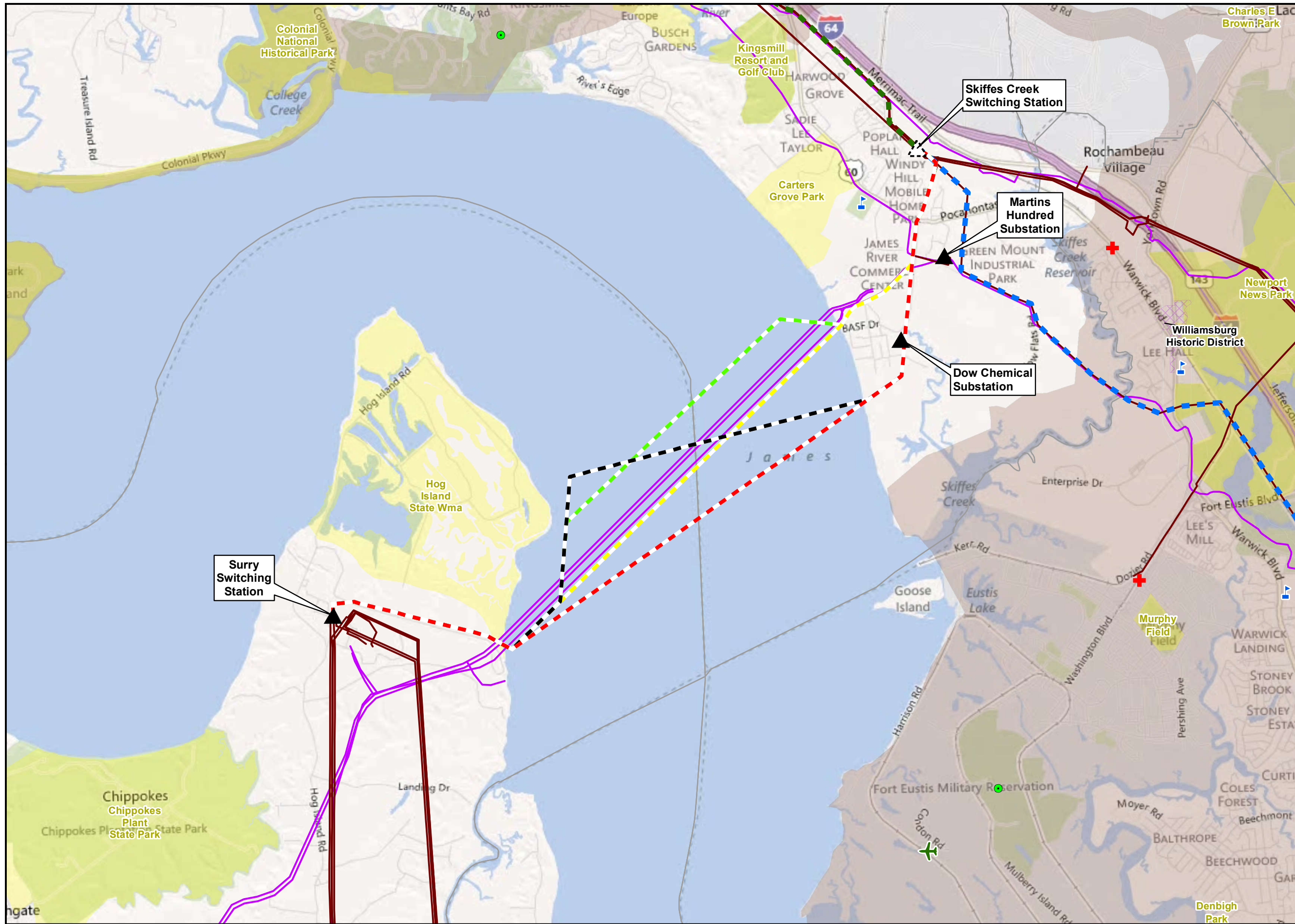


Surry - Skiffes Creek 500 kV Transmission Line
Skiffes Creek - Wheelton 230 kV Transmission Line
Skiffes Creek 500-230-115 kV Switching Station

Attachment II.A.2

- Existing Substation/ Switching Station
- Proposed Switching Station
- 500 kV Proposed Route (Surry-Skiffes Creek)
- James River Crossing Variation 1
- James River Crossing Variation 2
- James River Crossing Variation 3
- 500 kV Alternative Route (Chickahominy-Skiffes Creek)
- 230 kV Proposed Route (Skiffes Creek-Wheelton)
- Golf Course
- School
- Hospital
- Public Airport
- Military Airport
- Existing Transmission Line
- Existing Pipeline
- Recreation Area
- Historic Architecture Site
- Historic Battlefield

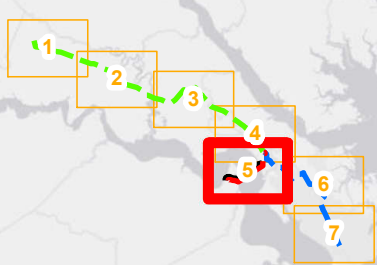




**Surry -
Skiffes Creek 500 kV
Transmission Line
Skiffes Creek -
Wheaton 230 kV
Transmission Line
Skiffes Creek
500-230-115 kV
Switching Station**

Attachment II.A.2

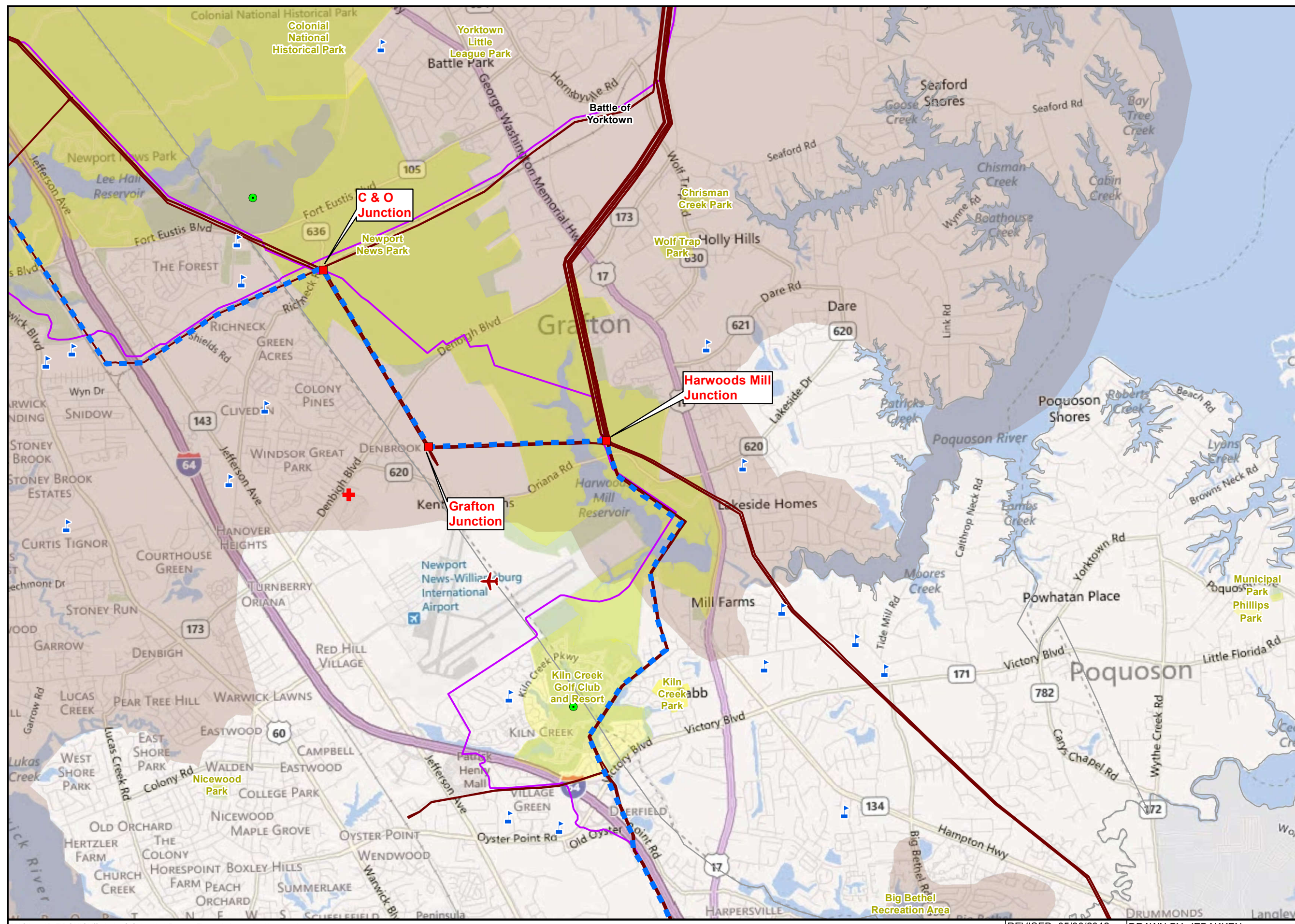
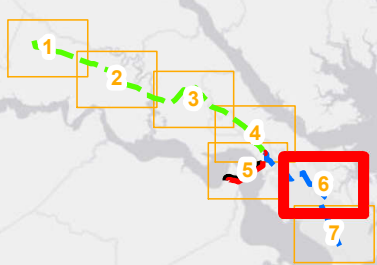
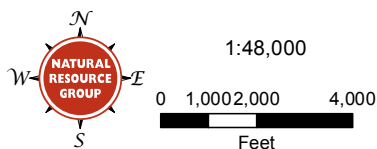
- ▲ Existing Substation/
Switching Station
- ▲ Proposed
Switching Station
- ◆ 500 kV Proposed Route
(Surry-Skiffes Creek)
- ◆ James River
Crossing Variation 1
- ◆ James River
Crossing Variation 2
- ◆ James River
Crossing Variation 3
- ◆ 500 kV Alternative Route
(Chickahominy-Skiffes Creek)
- ◆ 230 kV Proposed Route
(Skiffes Creek-Wheaton)
- Golf Course
- ▢ School
- ✚ Hospital
- ✚ Public Airport
- ✚ Military Airport
- Existing Transmission Line
- Existing Pipeline
- Recreation Area
- ▨ Historic Architecture Site
- Historic Battlefield



Surry - Skiffes Creek 500 kV Transmission Line
Skiffes Creek - Whealton 230 kV Transmission Line
Skiffes Creek 500-230-115 kV Switching Station

Attachment II.A.2

- Existing Substation/ Switching Station
- Proposed Switching Station
- 500 kV Proposed Route (Surry-Skiffes Creek)
- James River Crossing Variation 1
- James River Crossing Variation 2
- James River Crossing Variation 3
- 500 kV Alternative Route (Chickahominy-Skiffes Creek)
- 230 kV Proposed Route (Skiffes Creek-Whealton)
- Golf Course
- School
- Hospital
- Public Airport
- Military Airport
- Existing Transmission Line
- Existing Pipeline
- Recreation Area
- Historic Architecture Site
- Historic Battlefield



Surry - Skiffes Creek 500 kV Transmission Line
Skiffes Creek - Whealton 230 kV Transmission Line
Skiffes Creek 500-230-115 kV Switching Station

Attachment II.A.2

- Existing Substation/ Switching Station
- Proposed Switching Station
- 500 kV Proposed Route (Surry-Skiffes Creek)
- James River Crossing Variation 1
- James River Crossing Variation 2
- James River Crossing Variation 3
- 500 kV Alternative Route (Chickahominy-Skiffes Creek)
- 230 kV Proposed Route (Skiffes Creek-Whealton)
- Golf Course
- School
- Hospital
- Public Airport
- Military Airport
- Existing Transmission Line
- Existing Pipeline
- Recreation Area
- Historic Architecture Site
- Historic Battlefield

