

Stephen C. Spencer  
Director - Regulatory

STATE CORPORATION COMMISSION  
RECEIVED

DEC 16 2009

DIVISION OF COMMUNICATIONS  
RICHMOND, VA



703 E. Grace Street  
Richmond, VA 23219

Phone 804 772-1585  
Fax 804 772-3817  
steve.spencer@verizon.com

December 16, 2009

Virginia State Corporation Commission  
Communications Division  
Mr. William Irby, Director  
9th Floor, Tyler Building  
1300 East Main Street  
Richmond, Virginia 23219

Dear Mr. Irby:

Attached, in triplicate, for filing with your Honorable Commission are the following proposed Verizon South Inc. ("Verizon") tariffs pages to become effective January 31, 2010.

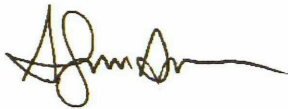
VERIZON SOUTH INC.  
GENERAL CUSTOMER SERVICES TARIFF  
Section 3, Eighteenth Revised Page 5  
Fifteenth Revised Page 8  
Fourteenth Revised Page 9  
Sixteenth Revised Page 10  
Eighteenth Revised Page 33  
Fourteenth Revised Page 36  
Sixteenth Revised Page 38  
Twelfth Revised Page 76  
Tenth Revised Page 77  
Eleventh Revised Page 78  
Eleventh Revised Page 81  
Tenth Revised Page 82  
Tenth Revised Page 83

VERIZON SOUTH INC.  
COMPETITIVE PRICED LOCAL EXCHANGE SERVICES TARIFF, S.C.C.-Va.-No. 220  
Section 1C, Fourth Revised Page 1  
Section 1C, First Revised Page 2  
Section 1E, Fourth Revised Page 1  
Section 1E, First Revised Page 2

In this filing are the proposed tariff pages deregulating the price of business BLETs individual line service in the Grottoes, Hayes, Keezletown, Raphine and Windsor exchanges. Supporting documents for each exchange is attached.

If you have any questions or require additional information regarding this filing, please contact me.

Yours truly,

A handwritten signature in black ink, appearing to be "A. Cummings", with a long horizontal line extending to the right.

cc: Katie Cummings

Attachments

GENERAL CUSTOMER SERVICES TARIFF

VERIZON SOUTH INC.  
VIRGINIA

Section 3  
Eighteenth Revised Page 5  
Cancels Seventeenth Revised Page 5  
EFFECTIVE: January 31, 2010

ISSUED: December 16, 2009  
BY: President  
Richmond, Virginia

S3. BASIC LOCAL EXCHANGE SERVICE

S3.2 Flat Rate Service (Continued)

S3.2.2 Exchange Classification and Rate Groups (Continued)

e. Rate Groups (Continued)

	Rate Group 6	Rate Group 7	Rate Group 8	Rate Group 9	Rate Group 10
Individual Access Line					
Residence (R1/74864)	\$15.59	\$16.71	\$16.87	\$16.87	\$16.87
Business (B1/11135)	30.75	33.75	35.85	37.90	37.90
Business 24-Month Term**	28.00	31.00	33.00	35.00	35.00
Automatic Access Line					
PBX Trunk	62.00	66.60	71.75	76.35	76.35
1-10 Lines (AALB/11823)					
24-Month Term**	56.50	61.00	66.00	70.50	70.50
11+ Lines (AALB11+/10280)	52.75	56.85	60.95	65.00	65.00
24-Month Term**	47.50	51.50	55.50	59.50	59.50

Rate Group 6 30,001-50,000	Rate Group 7 50,001-100,000	Rate Group 8 100,001-300,000	Rate Group 9 300,001-1,000,000	Rate Group 10 1,000,001-Over
Barnesville	Boykins	Amherst	Allwood	<b>Arcola</b> <sup>A, B</sup>
Bluefield	Capron	<b>Appomattox</b> <sup>B</sup>	Bowling Green	Chuckatuck
Dendron	Courtland	<b>Bridgewater</b> <sup>B</sup>	<b>Chancellor</b> <sup>B</sup>	<b>Crittenden</b> <sup>B</sup>
Dwight	Edom	<b>Broadway</b> <sup>B</sup>	Claremont	<b>Dale City</b> <sup>A, B</sup>
Grundy	<b>Emporia</b> <sup>B</sup>	Dawn	Colonial Beach	<b>Dulles</b> <sup>B</sup>
Hague	Farnham	<b>Dayton</b> <sup>B</sup>	Gladstone	<b>Dulles Metro</b> <sup>B</sup>
<b>Heathsville</b> <sup>B</sup>	<b>Harrisonburg</b> <sup>A, B</sup>	Deltaville	<b>Hayes</b> <sup>A, B</sup> (C)	Franklin
Kilmarnock	Ivor	Disputanta	<b>King George</b> <sup>B</sup>	<b>Gloucester</b> <sup>A</sup>
Lawrenceville	<b>Keezletown</b> <sup>B</sup> (C)	<b>Elkton</b> <sup>B</sup>	Pamplin	<b>Great Bridge</b> <sup>A, B</sup>
<b>Montross</b> <sup>B</sup>	Keysville	Eppes Fork	Port Royal	Hanover
Pocahontas	King William	<b>Grottoes</b> <sup>B</sup> (C)	Stony Creek	<b>Haymarket</b> <sup>A, B</sup>
South Brunswick	<b>Ladysmith</b> <sup>B</sup>	Hinton		<b>Hickory</b> <sup>A, B</sup>
	Lively	Jewell Ridge		Holland
	Mathews	King & Queen		<b>Independent Hill</b> <sup>A, B</sup>
	Oakwood	<b>McCaheysville</b> <sup>B</sup>		<b>Lorton</b> <sup>A, B</sup>
	Richlands	<b>Raphine</b> <sup>B</sup> (C)		<b>Lorton Metro</b> <sup>A, B</sup>
	Rocky Gap	Saluda		<b>Manassas</b> <sup>A, B</sup>
	Tazewell	<b>Tappahannock</b> <sup>B</sup>		<b>Nokesville</b> <sup>A, B</sup>
	Wakefield	<b>Weyers Cave</b> <sup>A, B</sup>		<b>Occoquan</b> <sup>A, B</sup>
				<b>Old Church</b> <sup>A</sup>
				<b>Princess Anne</b> <sup>A, B</sup>
				<b>Smithfield</b> <sup>B</sup>
				<b>Stafford</b> <sup>A, B</sup>
				Surry
				<b>Triangle</b> <sup>A, B</sup>
				<b>Windsor</b> <sup>B</sup> (C)

\*Refer to 3.2.3

Note A: Residential basic telephone services under the exchanges (in bold print) are Competitive and priced as indicated under Tariff 220.

Note B: Business basic telephone services under the exchanges (in bold print) are Competitive and priced as indicated under Tariff 220.

\*\* Termination Liability language is specified in Section S3.4.4.1 of this Tariff.

GENERAL CUSTOMER SERVICES TARIFF

VERIZON SOUTH INC.  
VIRGINIA

Section 3  
Fifteenth Revised Page 8  
Cancels Fourteenth Revised Page 8  
EFFECTIVE: January 31, 2010

ISSUED: December 16, 2009  
BY: President  
Richmond, Virginia

S3. BASIC LOCAL EXCHANGE SERVICE

S3.2 Flat Rate Service (Continued)

S3.2.3 Rates (Continued)

	Rate Group	Individual Access Line		Automatic Access Line (PBX Trunk)	
		Residence	Business <sup>1</sup>	1-10 Lines <sup>1</sup>	11+ Lines <sup>1</sup>
		R1/74864	B1/11135	AALB/11823	AALB11+/10280
Edom	7	\$ 16.71	\$ 33.75	\$ 66.60	\$ 56.85
<b>Elkton</b> <sup>B</sup>	8	16.87	35.85	71.75	60.95
<b>Emporia</b> <sup>B</sup>	7	16.71	33.75	66.60	56.85
Eppes Fork	8	16.87	35.85	71.75	60.95
Farnham	7	16.71	33.75	66.60	56.85
Franklin	10	16.87	37.90	76.35	65.00
Gladstone	9	16.87	37.90	76.35	65.00
<b>Gloucester</b> <sup>A</sup>	10	16.87	37.90	76.35	65.00
<b>Great Bridge</b> <sup>A, B</sup> (includes Battlefield)	10	16.87	37.90	76.35	65.00
<b>Grottoes</b> <sup>B</sup>	8	16.87	35.85	71.75	60.95
Grundy	6	15.59	30.75	62.00	52.75
Hague	6	15.59	30.75	62.00	52.75
Hanover	10	16.87	37.90	76.35	65.00
<b>Harrisonburg</b> <sup>A, B</sup>	7	16.71	33.75	66.60	56.85
<b>Hayes</b> <sup>A, B</sup>	9	16.87	37.90	76.35	65.00
<b>Haymarket</b> <sup>A, B</sup>	10	16.87	37.90	76.35	65.00
<b>Heathsville</b> <sup>B</sup>	6	15.59	30.75	62.00	52.75
<b>Hickory</b> <sup>A, B</sup>	10	16.87	37.90	76.35	65.00

(C)

(C)

Note <sup>A</sup>: Residential basic telephone services under the exchanges (in bold print) are Competitive and priced as indicated under Tariff 220.  
 Note <sup>B</sup>: Business basic telephone services under the exchanges (in bold print) are Competitive and priced as indicated under Tariff 220.  
 Note 1: Term Rates can be located on Pages 4 & 5.

GENERAL CUSTOMER SERVICES TARIFF

VERIZON SOUTH INC.  
VIRGINIA

Section 3  
Fourteenth Revised Page 9  
Cancels Thirteenth Revised Page 9  
EFFECTIVE: January 31, 2010

ISSUED: December 16, 2009  
BY: President  
Richmond, Virginia

S3. BASIC LOCAL EXCHANGE SERVICE

S3.2 Flat Rate Service (Continued)

S3.2.3 Rates (Continued)

	Rate Group	Individual Access Line		Automatic Access Line (PBX Trunk)	
		Residence	Business <sup>2</sup>	1-10 Lines <sup>2</sup>	11+ Lines <sup>2</sup>
		R1/74864	B1/11135	AALB/11823	AALB11+/10280
<b>Keezletown<sup>B</sup></b>	7	\$ 16.71	\$ 33.75	\$ 66.60	\$ 56.85
Keysville	7	16.71	33.75	66.60	56.85
Kilmarnock	6	15.59	30.75	62.00	52.75
<b>King George<sup>B</sup></b>	9	16.87	37.90	76.35	65.00
King & Queen	8	16.87	35.85	71.75	60.95
King William	7	16.71	33.75	66.60	56.85
<b>Ladysmith<sup>B</sup></b>	7	16.71	33.75	66.60	56.85
Lawrenceville	6	15.59	30.75	62.00	52.75
Lively	7	16.71	33.75	66.60	56.85
<b>Lorton<sup>A, B</sup></b>	10	16.87	37.90	76.35	65.00
<b>Lorton Metro<sup>1, A, B</sup></b>	10	(Refer to Message Rate Service in Section S3.5)			
<b>Manassas<sup>A, B</sup></b>	10	16.87	37.90	76.35	65.00
Mathews	7	16.71	33.75	66.60	56.85
Maxie	5	14.65	28.70	57.35	48.65
<b>McGaheysville<sup>B</sup></b>	8	16.87	35.85	71.75	60.95
<b>Montross<sup>B</sup></b>	6	15.59	30.75	62.00	52.75
<b>Nokesville<sup>A, B</sup></b>	10	16.87	37.90	76.35	65.00
Oakwood	7	16.71	33.75	66.60	56.85

(C)

Note 1: Lorton Metro customers can only subscribe to Message Rate Service. Refer to Section S3.5.3.b.

Note <sup>A</sup>: Residential basic telephone services under the exchanges (in bold print) are Competitive and priced as indicated under Tariff 220.

Note <sup>B</sup>: Business basic telephone services under the exchanges (in bold print) are Competitive and priced as indicated under Tariff 220.

Note 2: Term Rates can be located on Pages 4 & 5.

GENERAL CUSTOMER SERVICES TARIFF

VERIZON SOUTH INC.  
VIRGINIA

Section 3  
Sixteenth Revised Page 10  
Cancels Fifteenth Revised Page 10  
EFFECTIVE: January 31, 2010

ISSUED: December 16, 2009  
BY: President  
Richmond, Virginia

S3. BASIC LOCAL EXCHANGE SERVICE

S3.2 Flat Rate Service (Continued)

S3.2.3 Rates (Continued)

GSEC/IOSC:	Rate Group	Individual Access Automatic Access Line				
		Line		(PBX Trunk)		
		Residence R1/74864	Business <sup>3</sup> B1/11135	1-10 Lines <sup>3</sup> AALB11823	11+ Lines <sup>3</sup> AALB11+/10280	
<b>Raphine<sup>B</sup></b>	8	\$ 16.87	\$ 35.85	\$ 71.75	\$ 60.95	(C)
Reedville	5	14.65	28.70	57.35	48.65	
Richlands	7	16.71	33.75	66.60	56.85	
ELS Adder <sup>1</sup>		+ .02	+ .03	.03	+ .03	
		16.73	33.78	66.63	56.88	
Rocky Gap	7	16.71	33.75	66.60	56.85	
ELS Adder <sup>2</sup>		+2.40	+4.83	+9.81	+8.32	
		19.11	38.58	76.41	65.17	
Saluda	8	16.87	35.85	71.75	60.95	
<b>Smithfield<sup>B</sup></b>	10	16.87	37.90	76.35	65.00	
South Brunswick	6	15.59	30.75	62.00	52.75	
<b>Stafford<sup>A, B</sup></b>	10	16.87	37.90	76.35	65.00	
Stony Creek	9	16.87	37.90	76.35	65.00	
Surry	10	16.87	37.90	76.35	65.00	
<b>Tappahannock<sup>B</sup></b>	8	16.87	35.85	71.75	60.95	
Tazewell	7	16.71	33.75	66.60	56.85	
<b>Triangle<sup>A, B</sup></b> (includes Quantico)	10	16.87	37.90	76.35	65.00	
Wakefield	7	16.71	33.75	66.60	56.85	
Warsaw	5	14.65	28.70	57.35	48.65	
<b>Weyers Cave<sup>A, B</sup></b>	8	16.87	35.85	71.75	60.95	
<b>Windsor<sup>B</sup></b>	10	16.87	37.90	76.35	65.00	(C)

Note <sup>1</sup> Richlands Extended Local Service (ELS) Adder provides for unlimited calling to Verizon Virginia's Haysi Exchange.

Note <sup>2</sup> Rocky Gap Extended Local Service (ELS) Adder provides for unlimited calling to Embarq's Bland Exchange.

Note <sup>3</sup>: Term Rates can be located on Pages 4 & 5.

Note <sup>A</sup>: Residential basic telephone services under the exchanges (in bold print) are Competitive and priced as indicated under Tariff 220.

Note <sup>B</sup>: Business basic telephone services under the exchanges (in bold print) are Competitive and priced as indicated under Tariff 220.

GENERAL CUSTOMER SERVICES TARIFF

VERIZON SOUTH INC.  
VIRGINIA

Section 3  
Eighteenth Revised Page 33  
Cancels Seventeenth Revised Page 33  
EFFECTIVE: January 31, 2010

ISSUED: December 16, 2009  
BY: President  
Richmond, Virginia

S3. BASIC LOCAL EXCHANGE SERVICE

S3.4 Optional Usage Sensitive Service (USS) (Continued)

S3.4.5 Usage Sensitive Service Rates (Continued)

a. Access Line Rates (Continued)

	Rate Group 6	Rate Group 7	Rate Group 8	Rate Group 9	Rate Group 10
Individual Access Line Residence (R1USS/11944)	\$8.20	\$ 8.74	\$ 8.74	\$ 8.74	\$ 8.74
Business (B1USS/11917)	19.45	21.00	23.00	24.50	24.50
Business 24-Month Term**	17.00	18.50	20.50	22.50	22.50
Exchange Only Residence (M1X/75520)	14.13	15.11	15.25	15.25	15.25
Automatic Access Line (AALBUSS/75521)	44.55	48.15	51.25	53.25	53.25
24-Month Term**	40.50	44.00	47.00	49.00	49.00
Customer Owned Coin (PTAL/11939)	13.98	15.03	16.03	17.08	18.09

Rate Group 6 30,001-50,000	Rate Group 7 50,001-100,000	Rate Group 8 100,001-300,000	Rate Group 9 300,001-1,000,000	Rate Group 10 1,000,001-Over
Barnesville Bluefield Dendron Dwight Grundy Hague Heathsville <sup>B</sup> Kilmarnock Lawrenceville Montross <sup>B</sup> Pocahontas South Brunswick	Boykins Capron Courtland Edom Emporia <sup>B</sup> Farnham Harrisonburg <sup>A, B</sup> Ivor Keezletown <sup>B</sup> (C) Keysville King William Ladysmith <sup>B</sup> Lively Mathews Oakwood Richlands Rocky Gap Tazewell Wakefield	Amherst Appomattox <sup>B</sup> Bridgewater <sup>B</sup> Broadway <sup>B</sup> Dawn Dayton <sup>B</sup> Deltaville Disputanta Elkton <sup>B</sup> Eppes Fork Grottoes <sup>B</sup> (C) Hinton Jewell Ridge King & Queen McGaheysville <sup>B</sup> Raphine <sup>B</sup> (C) Saluda Tappahannock <sup>B</sup> Weyers Cave <sup>A, B</sup>	Allwood Bowling Green Chancellor <sup>B</sup> Claremont Colonial Beach Gladstone Hayes <sup>A, B</sup> (C) King George <sup>B</sup> Pamplin Port Royal Stony Creek	Arcola <sup>A, B</sup> Chuckatuck Crittenden <sup>B</sup> Dale City <sup>A, B</sup> Dulles <sup>B</sup> Dulles Metro <sup>B</sup> Franklin Gloucester <sup>A</sup> Great Bridge <sup>A, B</sup> Hanover Haymarket <sup>A, B</sup> Hickory <sup>A, B</sup> Holland Independent Hill <sup>A, B</sup> Lorton <sup>A, B</sup> Lorton Metro <sup>A, B</sup> Manassas <sup>A, B</sup> Nokesville <sup>A, B</sup> Occoquan <sup>A, B</sup> Old Church <sup>A</sup> Princess Anne <sup>A, B</sup> Smithfield <sup>B</sup> Stafford <sup>A, B</sup> Surry Triangle <sup>A, B</sup> Windsor <sup>B</sup> (C)

\* Refer to 3.4.5

\*\* Termination Liability language is specified in Section S3.4.4.1 of this Tariff.

Note A: Residential basic telephone services under the exchanges (in bold print) are Competitive and priced as indicated under Tariff 220.

Note B: Business basic telephone services under the exchanges (in bold print) are Competitive and priced as indicated under Tariff 220.

GENERAL CUSTOMER SERVICES TARIFF

VERIZON SOUTH INC.  
VIRGINIA

Section 3  
Fourteenth Revised Page 36  
Cancels Thirteenth Revised Page 36  
EFFECTIVE: January 31, 2010

ISSUED: December 16, 2009  
BY: President  
Richmond, Virginia

S3. BASIC LOCAL EXCHANGE SERVICE

S3.4 Optional Usage Sensitive Service (USS) (Continued)

S3.4.5 Usage Sensitive Service Rates (Continued)

a. Access Line Rates (Continued)

	Rate Group	Individual Access Line		Automatic Access Line (PBX Trunk) <sup>1</sup> AALBUSS/ 75521	Exchange Only Residence MIX/75520	Customer Owned Coin PTAL/11939	
		Residence R1USS/ 11944	Business <sup>1</sup> 1USS/ 11917				
GSEC/ IOSC							
Franklin	10	\$ 8.74	\$24.50	\$53.25	\$15.25	\$18.09	
Gladstone	9	8.74	24.50	53.25	15.25	17.08	
<b>Gloucester<sup>A</sup></b>	10	8.74	24.50	53.25	15.25	18.09	
<b>Great Bridge<sup>A, B</sup></b> (includes Battlefield)	10	8.74	24.50	53.25	15.25	18.09	
<b>Grottoes<sup>B</sup></b>	8	8.74	23.00	51.25	15.25	16.03	(C)
Grundy	6	8.20	19.45	44.55	14.13	13.98	
Hague	6	8.20	19.45	44.55	14.13	13.98	
Hanover	10	8.74	24.50	53.25	15.25	18.09	
<b>Harrisonburg<sup>A, B</sup></b>	7	8.74	21.00	48.15	15.11	15.03	
<b>Hayes<sup>A, B</sup></b>	9	8.74	24.50	53.25	15.25	17.08	(C)
<b>Haymarket<sup>A, B</sup></b>	10	8.74	24.50	53.25	15.25	18.09	
<b>Heathsville<sup>B</sup></b>	6	8.20	19.45	44.55	14.13	13.98	
<b>Hickory<sup>A, B</sup></b>	10	8.74	24.50	53.25	15.25	18.09	
Hinton	8	8.74	23.00	51.25	15.25	16.03	
Holland	10	8.74	24.50	53.25	15.25	18.09	
Hurley	5	7.78	17.75	41.00	13.27	12.99	
<b>Independent Hill<sup>A, B</sup></b>	10	8.74	24.50	53.25	15.25	18.09	
Irvington	5	7.78	17.75	41.00	13.27	12.99	
Ivor	7	8.74	21.00	48.15	15.11	15.03	
Jarratt	5	7.78	17.75	41.00	13.27	12.99	
Jewell Ridge	8	8.74	23.00	51.25	15.25	16.03	
<b>Keezletown<sup>B</sup></b>	7	8.74	21.00	48.15	15.11	15.03	(C)

Note <sup>A</sup> Residential basic telephone services under the exchanges (in bold print) are Competitive and priced as indicated under Tariff 220.

Note <sup>B</sup> Business basic telephone services under the exchanges (in bold print) are Competitive and priced as indicated under Tariff 220.

Note <sup>1</sup> Term Rates can be located on Pages 32 & 33.



GENERAL CUSTOMER SERVICES TARIFF

VERIZON SOUTH INC.  
VIRGINIA

Section 3  
Sixteenth Revised Page 38  
Cancels Fifteenth Revised Page 38  
EFFECTIVE: January 31, 2010

ISSUED: December 16, 2009  
BY: President  
Richmond, Virginia

S3. BASIC LOCAL EXCHANGE SERVICE

S3.4 Optional Usage Sensitive Service (USS) (Continued)  
S3.4.5 Usage Sensitive Service Rates (Continued)

a. Access Line Rates (Continued)

GSEC/ IOSC	Rate Group	Individual Access Line		Automatic Access Line (PBX Trunk) <sup>1</sup> AALBUSS/ 75521	Exchange Only Residence MIX/75520	Customer Owned Coin PTAL/11939	
		Residence	Business <sup>1</sup>				
		R1USS/ 11944	B1USS/ 11917				
<b>Raphine<sup>B</sup></b>	8	\$ 8.74	\$ 23.00	\$ 51.25	\$15.25	\$16.03	(C)
Reedville	5	7.78	17.75	41.00	13.27	12.99	
Richlands ELS Adder	7	8.74 <u>+01</u> 8.75	21.00 <u>+01</u> 21.01	48.15 <u>+01</u> 48.16	15.11 <u>+01</u> 15.12	15.03 <u>+01</u> 15.04	
Rocky Gap ELS Adder <sup>3</sup>	7	8.74 <u>+1.26</u> 10.00	21.00 <u>+3.07</u> 24.07	48.15 <u>+6.78</u> 54.93	15.11 <u>+2.17</u> 17.28	15.03 <u>+2.59</u> 17.62	
Saluda	8	8.74	23.00	51.25	15.25	16.03	
<b>Smithfield<sup>B</sup></b>	10	8.74	24.50	53.25	15.25	18.09	
South Brunswick	6	8.20	19.45	44.55	14.13	13.98	
<b>Stafford<sup>A, B</sup></b>	10	8.74	24.50	53.25	15.25	18.09	
Stony Creek	9	8.74	24.50	53.25	15.25	17.08	
Surry	10	8.74	24.50	53.25	15.25	18.09	
<b>Tappahannock<sup>B</sup></b>	8	8.74	23.00	51.25	15.25	16.03	
Tazewell	7	8.74	21.00	48.15	15.11	15.03	
<b>Triangle<sup>A, B</sup></b> (includes Quantico)	10	8.74	24.50	53.25	15.25	18.09	
Wakefield	7	8.74	21.00	48.15	15.11	15.03	
<b>Warsaw</b>	5	7.78	17.75	41.00	13.27	12.99	
<b>Weyers Cave<sup>A, B</sup></b>	8	8.74	23.00	51.25	15.25	16.03	
<b>Windsor<sup>B</sup></b>	10	8.74	24.50	53.25	15.25	18.09	(C)

\*\*\* CROSS REFERENCE NOTES \*\*\*

- The USS Business Individual Access Line rate also applies to:  
Customer Owned Coin and Coinless Operated Telephone Service  
as specified in Section S7.1.4.  
CentraNet Service – NARS – Refer to Section S12.1.2
  - The USS Automatic Access Line (PBX Trunk) rate also applies to:  
Shared Tenant Service - Refer to Section S24.1.3  
CentraNet Service – NARS – Refer to Section S12.1.2
  - Rocky Gap Extended Local Service (ELS) Adder provides for unlimited calling to Embarq's Bland Exchange.
- Note <sup>A</sup>: Residential basic telephone services under the exchanges (in bold print) are Competitive and priced as indicated under Tariff 220.  
Note <sup>B</sup>: Business basic telephone services under the exchanges (in bold print) are Competitive and priced as indicated under Tariff 220.  
Note <sup>1</sup>: Term Rates can be located on Pages 32 & 33.

GSEC/IOSC

PTAL/11939  
CEN NARSM/52149

STSAALBUSS  
CEN NARM/52120

GENERAL CUSTOMER SERVICES TARIFF

VERIZON SOUTH INC.  
VIRGINIA

Section 3  
Twelfth Revised Page 76  
Cancels Eleventh Revised Page 76  
EFFECTIVE: January 31, 2010

ISSUED: December 16, 2009  
BY: President  
Richmond, Virginia

S3. BASIC LOCAL EXCHANGE SERVICE

S3.11 Verizon Local Calling Plan (Continued)

S3.11.3 Rates (Continued)

- b. Rate Schedule (Continued)  
(2) Business Individual Access Line and CentraNet NARs (3-7) (Continued)

	Basic Calling Plan	Community Plus Plan	Premium Plan	
IOSC:	21674	10843	11849	
CEN NARs 3-7:	99631	99633	99635	
<b>Grottoes<sup>A</sup></b>	-	-	-	(C)
Grundy	\$ 25.10	\$ 32.80	-	
Hague	23.55	30.75	-	
Hanover	30.20	35.35	74.80	
<b>Harrisonburg<sup>A</sup></b>	-	-	-	
<b>Hayes<sup>A</sup></b>	30.20	35.35	-	(C)
<b>Haymarket<sup>A</sup></b>	-	-	-	
<b>Heathsville<sup>A</sup></b>	23.55	30.75	-	
<b>Hickory<sup>A</sup></b>	-	-	-	
Hinton	-	-	-	
Holland	30.20	35.35	-	
Hurley	23.55	28.70	72.75	
<b>Independent Hill<sup>A</sup></b>	-	-	-	
Irvington	23.55	28.70	72.75	
Ivor	30.20	35.35	74.80	
Jarratt	26.65	30.75	74.80	
Jewell Ridge	25.10	32.80	74.80	
<b>Keezletown<sup>A</sup></b>	-	-	-	(C)
Keysville	25.10	30.75	74.80	
Kilmarnock	23.55	30.75	-	
<b>King George<sup>A</sup></b>	28.70	35.35	-	
King & Queen	30.20	35.35	74.80	
King William	30.20	35.35	74.80	

Note A: Business basic telephone services under the exchanges (in bold print) are Competitive and priced as indicated under Tariff 220

GENERAL CUSTOMER SERVICES TARIFF

VERIZON SOUTH INC.  
VIRGINIA

Section 3  
Tenth Revised Page 77  
Cancels Ninth Revised Page 77  
EFFECTIVE: January 31, 2010

ISSUED: December 16, 2009  
BY: President  
Richmond, Virginia

S3. BASIC LOCAL EXCHANGE SERVICE

S3.11 Verizon Local Calling Plan (Continued)

S3.11.3 Rates (Continued)

- b. Rate Schedule (Continued)  
(2) Business Individual Access Line and CentraNet NARs (3-7) (Continued)

	Basic Calling Plan	Community Plus Plan	Premium Plan
IOSC:	21674	10843	11849
CEN NARs 3-7:	99631	99633	99635
<b>Ladysmith<sup>A</sup></b>	\$ 30.20	\$ 35.35	\$ 74.80
Lawrenceville	26.65	32.80	74.80
Lively	25.10	30.75	-
<b>Lorton<sup>A</sup></b>	-	-	-
<b>Lorton Metro<sup>A</sup></b>	-	-	-
<b>Manassas<sup>A</sup></b>	-	-	-
Mathews	28.70	32.80	74.80
Maxie	23.55	28.70	72.75
<b>McGaheysville<sup>A</sup></b>	-	-	-
<b>Montross<sup>A</sup></b>	23.55	30.75	-
<b>Nokesville<sup>A</sup></b>	-	-	-
Oakwood	25.10	30.75	-
<b>Occoquan<sup>A</sup></b> (includes Woodbridge)	-	-	-
Old Church	30.20	35.35	74.80
Pamplin	28.70	35.35	74.80
Pocahontas	25.10	30.75	74.80
Port Royal	28.70	35.35	74.80
<b>Princess Anne<sup>A</sup></b> (includes Pungo and Shipps Corner)	-	-	-
<b>Raphine<sup>A</sup></b>	26.65	32.80	74.80
Reedville	23.55	28.70	72.75
Richlands	25.10	32.80	74.80
Rocky Gap	25.10	30.75	72.75
ELS Adder <sup>1</sup>	<u>0</u>	<u>+4.48</u>	<u>0</u>
	25.10	35.23	72.75

Note 1: Rocky Gap Extended Local Service (ELS) Adder provides for unlimited calling to Embarq's Bland Exchange.

Note A: Business basic telephone services under the exchanges (in bold print) are Competitive and priced as indicated under Tariff 220.

GENERAL CUSTOMER SERVICES TARIFF

VERIZON SOUTH INC.  
VIRGINIA

Section 3  
Eleventh Revised Page 78  
Cancels Tenth Revised Page 78  
EFFECTIVE: January 31, 2010

ISSUED: December 16, 2009  
BY: President  
Richmond, Virginia

S3. BASIC LOCAL EXCHANGE SERVICE

S3.11 Verizon Local Calling Plan (Continued)

S3.11.3 Rates (Continued)

b. Rate Schedule (Continued)

(2) Business Individual Access Line and CentraNet® NARs (3-7) (Continued)

	IOSC:	Basic Calling Plan	Community Plus Plan	Premium Plan
	CEN NARs 3-7:	21674	10843	11849
		99631	99633	99635
Saluda		\$ 26.65	\$ 32.80	\$ -
<b>Smithfield<sup>A</sup></b>		30.20	35.35	-
South Brunswick		23.55	30.75	72.75
<b>Stafford<sup>A</sup></b>		-	-	-
Stony Creek		28.70	35.35	74.80
Surry		30.20	35.35	74.80
<b>Tappahannock<sup>A</sup></b>		25.10	32.80	-
Tazewell		25.10	32.80	-
<b>Triangle<sup>A</sup></b> (includes Quantico)		-	-	-
Wakefield		30.20	35.35	74.80
Warsaw		25.10	30.75	74.80
<b>Weyers Cave<sup>A</sup></b>		-	-	-
<b>Windsor<sup>A</sup></b>		30.20	35.35	-

(C)

Note <sup>A</sup>: Business basic telephone services under the exchanges (in bold print) are Competitive and priced as indicated under Tariff 220.

GENERAL CUSTOMER SERVICES TARIFF

VERIZON SOUTH INC.  
VIRGINIA

Section 3  
Eleventh Revised Page 81  
Cancels Tenth Revised Page 81  
EFFECTIVE: January 31, 2010

ISSUED: December 16, 2009  
BY: President  
Richmond, Virginia

S3. BASIC LOCAL EXCHANGE SERVICE

S3.11 Verizon Local Calling Plan (Continued)

S3.11.3 Rates (Continued)

b. Rate Schedule (Continued)

(3) Automatic Access Line and CentraNet NARs (8+) (Continued)

	IOSC: AAL	Basic Calling Plan	Community Plus Plan	Premium Plan	
	CEN NARS 8+	11529 99632	11819 99634	11821 99636	
<b>Grottoes<sup>A</sup></b>		-	-	-	(C)
Grundy		\$ 50.20	\$ 84.00	-	
Hague		43.55	76.35	-	
Hanover		58.40	84.00	137.25	
Harrisonburg		-	-	-	
<b>Hayes<sup>A</sup></b>		58.40	84.00	-	(C)
<b>Haymarket<sup>A</sup></b>		-	-	-	
<b>Heathsville<sup>A</sup></b>		43.55	76.35	-	
<b>Hickory<sup>A</sup></b>		-	-	-	
Hinton		-	-	-	
Holland		58.40	84.00	-	
Hurley		43.55	76.35	137.25	
<b>Independent Hill<sup>A</sup></b>		-	-	-	
Irvington		43.55	76.35	137.25	
Ivor		58.40	84.00	137.25	
Jarratt		50.20	76.35	137.25	
Jewell Ridge		50.20	84.00	137.25	
<b>Keezletown<sup>A</sup></b>		-	-	-	(C)
Keysville		50.20	76.35	137.25	
Kilmarnock		43.55	76.35	-	
<b>King George<sup>A</sup></b>		58.40	84.00	-	
King & Queen		58.40	84.00	137.25	
King William		58.40	84.00	137.25	

Note <sup>A</sup>: Business basic telephone services under the exchanges (in bold print) are Competitive and priced as indicated under Tariff 220.

GENERAL CUSTOMER SERVICES TARIFF

VERIZON SOUTH INC.  
VIRGINIA

Section 3  
Tenth Revised Page 82  
Cancels Ninth Revised Page 82  
EFFECTIVE: January 31, 2010

ISSUED: December 16, 2009  
BY: President  
Richmond, Virginia

S3. BASIC LOCAL EXCHANGE SERVICE

S3.11 Verizon Local Calling Plan (Continued)

S3.11.3 Rates (Continued)

b. Rate Schedule (Continued)

(3) Automatic Access Line and CentraNet NARs (8+) (Continued)

	Basic Calling Plan	Community Plus Plan	Premium Plan	
IOSC: AAL	11529	11819	11821	
CEN NARS 8+	99632	99634	99636	
<b>Ladysmith<sup>A</sup></b>	\$ 58.40	\$ 84.00	\$ 137.25	
Lawrenceville	50.20	84.00	137.25	
Lively	50.20	76.35	-	
<b>Lorton<sup>A</sup></b>	-	-	-	
<b>Lorton Metro<sup>A</sup></b>	-	-	-	
<b>Manassas<sup>A</sup></b>	-	-	-	
Mathews	58.40	84.00	137.25	
Maxie	43.55	76.35	137.25	
<b>McGaheysville<sup>A</sup></b>	-	-	-	
<b>Montross<sup>A</sup></b>	43.55	76.35	-	
<b>Nokesville<sup>A</sup></b>	-	-	-	
Oakwood	50.20	76.35	-	
<b>Occoquan<sup>A</sup></b> (includes Woodbridge)	-	-	-	
Old Church	58.40	84.00	137.25	
Pamplin	58.40	84.00	137.25	
Pocahontas	50.20	76.35	137.25	
Port Royal	58.40	84.00	137.25	
<b>Princess Anne<sup>A</sup></b> (includes Pungo and Shipps Corner)	-	-	-	
<b>Raphine<sup>A</sup></b>	50.20	84.00	137.25	(C)
Reedville	43.55	76.35	137.25	
Richlands	50.20	84.00	137.25	
Rocky Gap	50.20	76.35	137.25	
ELS Adder <sup>1</sup>	0	+11.26	0	
	50.20	87.61	137.25	

Note 1: Rocky Gap Extended Local Service (ELS) Adder provides for unlimited calling to Embarq's Bland Exchange.

Note A: Business basic telephone services under the exchanges (in bold print) are Competitive and priced as indicated under Tariff 220.



GENERAL CUSTOMER SERVICES TARIFF

VERIZON SOUTH INC.  
VIRGINIA

Section 3  
Tenth Revised Page 83  
Cancels Ninth Revised Page 83  
EFFECTIVE: January 31, 2010

ISSUED: December 16, 2009  
BY: President  
Richmond, Virginia

S3. BASIC LOCAL EXCHANGE SERVICE

S3.11 Verizon Local Calling Plan (Continued)

S3.11.3 Rates (Continued)

- b. Rate Schedule (Continued)  
(3) Automatic Access Line and CentraNet NARs (8+) (Continued)

	IOSC:	AAL CEN NARS 8+	Basic Calling Plan 11529 99632	Community Plus Plan 11819 99634	Premium Plan 11821 99636
Saluda			\$ 50.20	\$ 84.00	\$ -
<b>Smithfield<sup>A</sup></b>			58.40	84.00	-
South Brunswick			43.55	76.35	137.25
<b>Stafford<sup>A</sup></b>			-	-	-
Stony Creek			58.40	84.00	137.25
Surry			58.40	84.00	137.25
<b>Tappahannock<sup>A</sup></b>			50.20	84.00	-
Tazewell			50.20	84.00	-
Triangle (includes Quantico)			-	-	-
Wakefield			58.40	84.00	137.25
Warsaw			50.20	76.35	137.25
<b>Weyers Cave<sup>A</sup></b>			-	-	-
<b>Windsor<sup>A</sup></b>			58.40	84.00	-

(C)

Note A: Business basic telephone services under the exchanges (in bold print) are Competitive and priced as indicated under Tariff 220.



COMPETITIVE PRICED LOCAL EXCHANGE SERVICES TARIFF - No. 220

VERIZON SOUTH INC.  
VIRGINIA

Section 1C  
Fourth Revised Page 1  
Cancels Third Revised Page 1  
EFFECTIVE: January 31, 2010

ISSUED: December 16, 2009  
BY: President  
Richmond, Virginia

EXCHANGE PRICES – BUSINESS

Business Dialtone Service Price (Per Month, usage indicated where applicable)

<u>Exchange</u>	<u>Flat Rate</u>	<u>Message Rate<sup>1</sup></u> <u>(50 Call Allowance)</u>	<u>Optional Usage Sensitive<sup>1</sup></u> <u>(US\$)</u>	
	(For current rates in listed exchanges, see General Customer Services Tariff, Sections 3.2 thru 3.5)			
Appomattox				
Arcola				
Bridgewater				
Broadway				
Callao				
Chancellor				
Crittenden				
Dahlgren				
Dale City				
Dayton				
Doswell				
Dulles				
Dulles Metro				
Elkton				
Emporia				
Great Bridge				
Grottoes				(N)
Harrisonburg				
Hayes				(N)
Haymarket				
Heathsville				
Hickory				
Independent Hill				
Keezletown				(N)
King George				
Ladysmith				
Lorton				
Lorton Metro				
Manassas				
McGaheysville				
Montross				
Nokesville				
Occoquan				

(D)

Note 1: For Usage options and Charges see General Customer Services Tariff, Sections 3.4 and 3.5.

COMPETITIVE PRICED LOCAL EXCHANGE SERVICES TARIFF - No. 220

VERIZON SOUTH INC.  
VIRGINIA

Section 1C  
First Revised Page 2  
Cancels Original Page 2  
EFFECTIVE: January 31, 2010

ISSUED: December 16, 2009  
BY: President  
Richmond, Virginia

EXCHANGE PRICES – BUSINESS

Business Dialtone Service Price (Per Month, usage indicated where applicable)

<u>Exchange</u>	<u>Flat Rate</u>	<u>Message Rate<sup>1</sup></u> (50 Call Allowance)	<u>Optional Usage Sensitive<sup>1</sup></u> (US\$)	
	(For current rates in listed exchanges, see General Customer Services Tariff, Sections 3.2 thru 3.5)			
Princess Anne				
Raphine				(N)
Smithfield				
Stafford				
Tappahannock				
Triangle				
Weyers Cave				
Windsor				(N)

Note 1: For Usage options and Charges see General Customer Services Tariff, Sections 3.4 and 3.5.

COMPETITIVE PRICED LOCAL EXCHANGE SERVICES TARIFF - No. 220

VERIZON SOUTH INC.  
VIRGINIA

ISSUED: December 16, 2009  
BY: President  
Richmond, Virginia

Section 1E  
Fourth Revised Page 1  
Cancels Third Revised Page 1  
EFFECTIVE: January 31, 2010

OPTIONAL LOCAL CALLING PLAN PRICES - BUSINESS

Business Dialtone Service Price (Per Month)

Exchange	BASIC <sup>1</sup>	COMMUNITY PLUS <sup>1</sup>	PREMIUM
	(For current rates in listed exchanges, see General Customer Services Tariff, Section 3.11)		
Appomattox			
Arcola			
Bridgewater			
Broadway			
Callao			
Chancellor			
Crittenden			
Dahlgren			
Dale City			
Dayton			
Doswell			
Dulles			
Dulles Metro			
Elkton			
Emporia			
Great Bridge			
Grottoes			(N)
Harrisonburg			
Hayes			(N)
Haymarket			
Heathsville			
Hickory			
Independent Hill			
Keezletown			(N)
King George			
Ladysmith			
Lorton			
Lorton Metro			
Manassas			
McGaheysville			
Montross			
Nokesville			
Occoquan			

(D)

Note 1: For Usage options and Charges see General Customer Services Tariff, Section 3.11.

COMPETITIVE PRICED LOCAL EXCHANGE SERVICES TARIFF - No. 220

VERIZON SOUTH INC.  
VIRGINIA

Section 1E  
First Revised Page 2  
Cancels Original Page 2  
EFFECTIVE: January 31, 2010

ISSUED: December 16, 2009  
BY: President  
Richmond, Virginia

OPTIONAL LOCAL CALLING PLAN PRICES - BUSINESS

Business Dialtone Service Price (Per Month)

Exchange	BASIC <sup>1</sup>	COMMUNITY PLUS <sup>1</sup>	PREMIUM
(For current rates in listed exchanges, see General Customer Services Tariff, Section 3.11)			
Princess Anne			
Raphine			(N)
Smithfield			
Stafford			
Tappahannock			
Triangle			
Weyers Cave			
Windsor			(N)

(D)

Note 1: For Usage options and Charges see General Customer Services Tariff, Section 3.11.

## **Competitiveness Test**

Grottoes, Hayes, Keezletown, Raphine and Windsor Exchanges

### **Step A**

**A minimum of 75% of the businesses in the telephone exchange area can choose business telephone service from among at least two (2) competitors to Verizon**

This test is met by the combined coverage of a number of competitors, including AT&T Wireless, nTelos Wireless, Sprint, T-Mobile and U. S. Cellular. (see Attachment A).

### **Step B**

**A minimum of two (2) of the competitors to Verizon in part “a” must offer business local telephone service that may be purchased by the business customer without a corresponding requirement to purchase non-telecommunications services (e.g., video or broadband internet service) from that competitor**

This test is met by the combined coverage of a number of competitors, including AT&T Wireless, nTelos Wireless, Sprint, T-Mobile and U. S. Cellular. (see Attachment A).

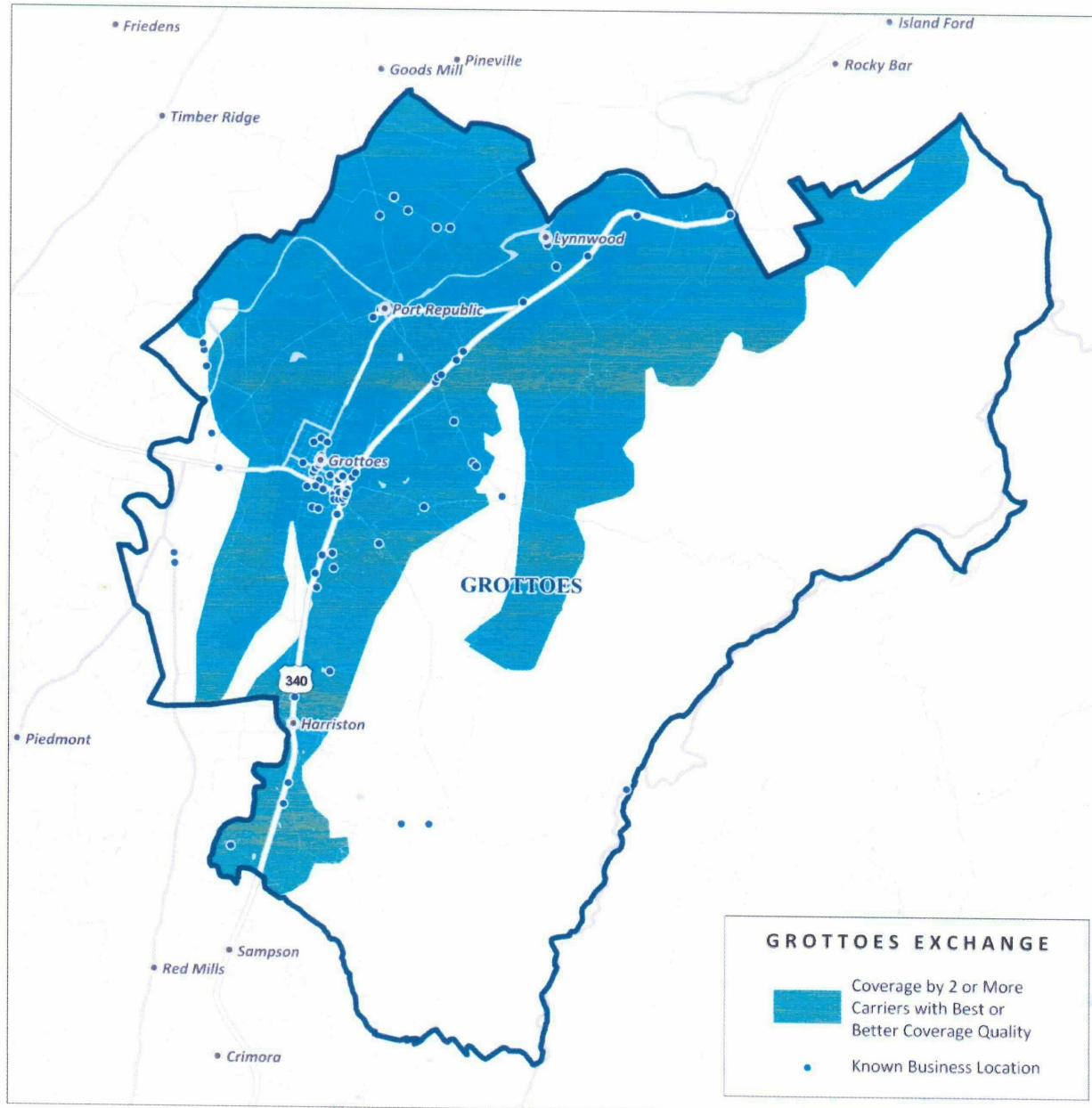
### **Step C**

**At least 50% of the businesses in the telephone exchange area can choose a facilities-based competitor that owns its own wireline network facilities**

This test is met by the combined coverage of a number of competitors, including AT&T Wireless, nTelos Wireless, Sprint, T-Mobile and U. S. Cellular. (see Attachment A).

**ATTACHMENT A**  
**Grottoes, Hayes, Keezletown, Raphine and**  
**Windsor Exchanges**

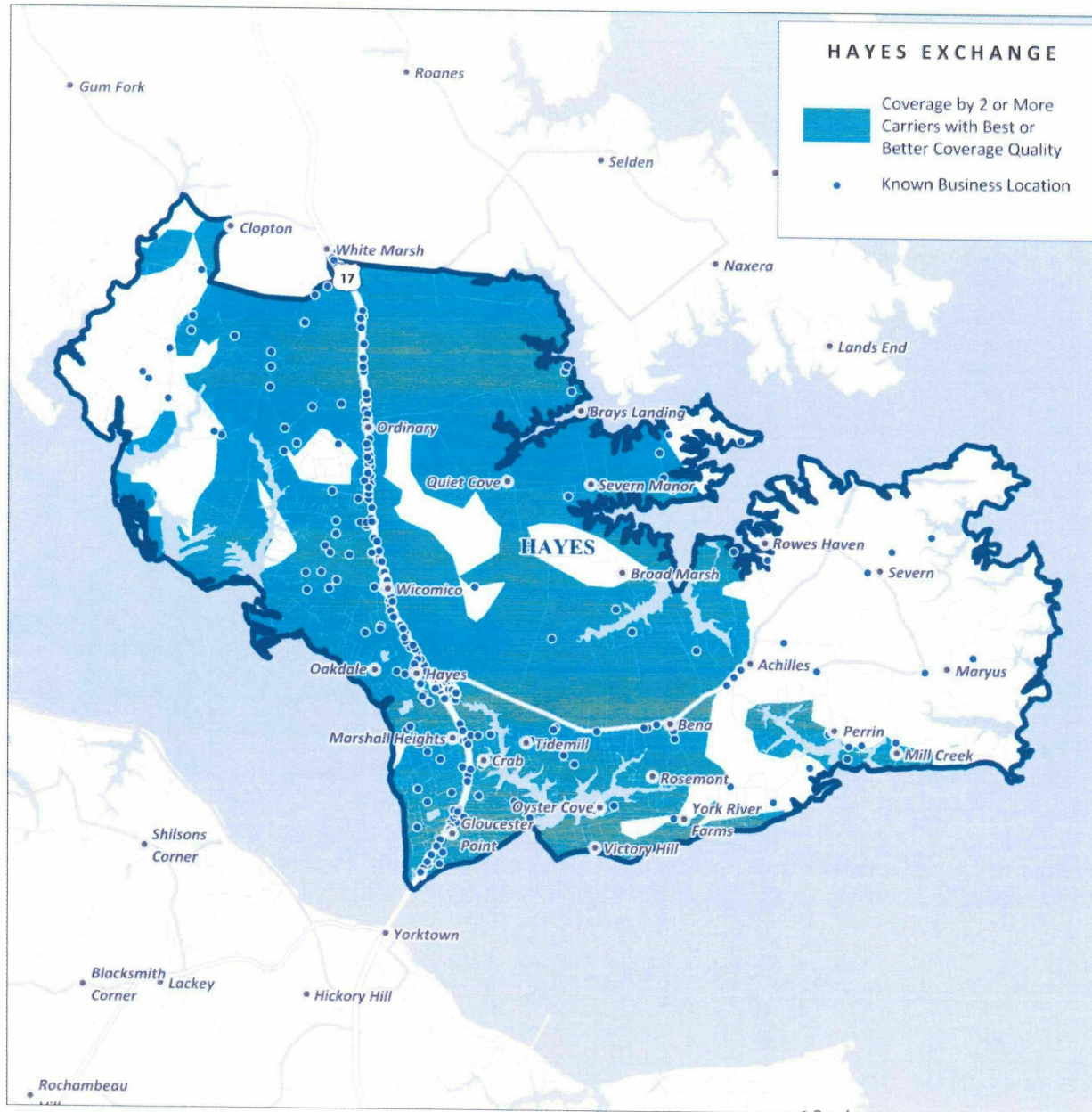
# Grottoes – 2+ carriers with Best/Better coverage



*134 Businesses  
123 Covered*

*91.8% of  
Businesses  
Covered*

# Hayes – 2+ carriers with Best/Better coverage

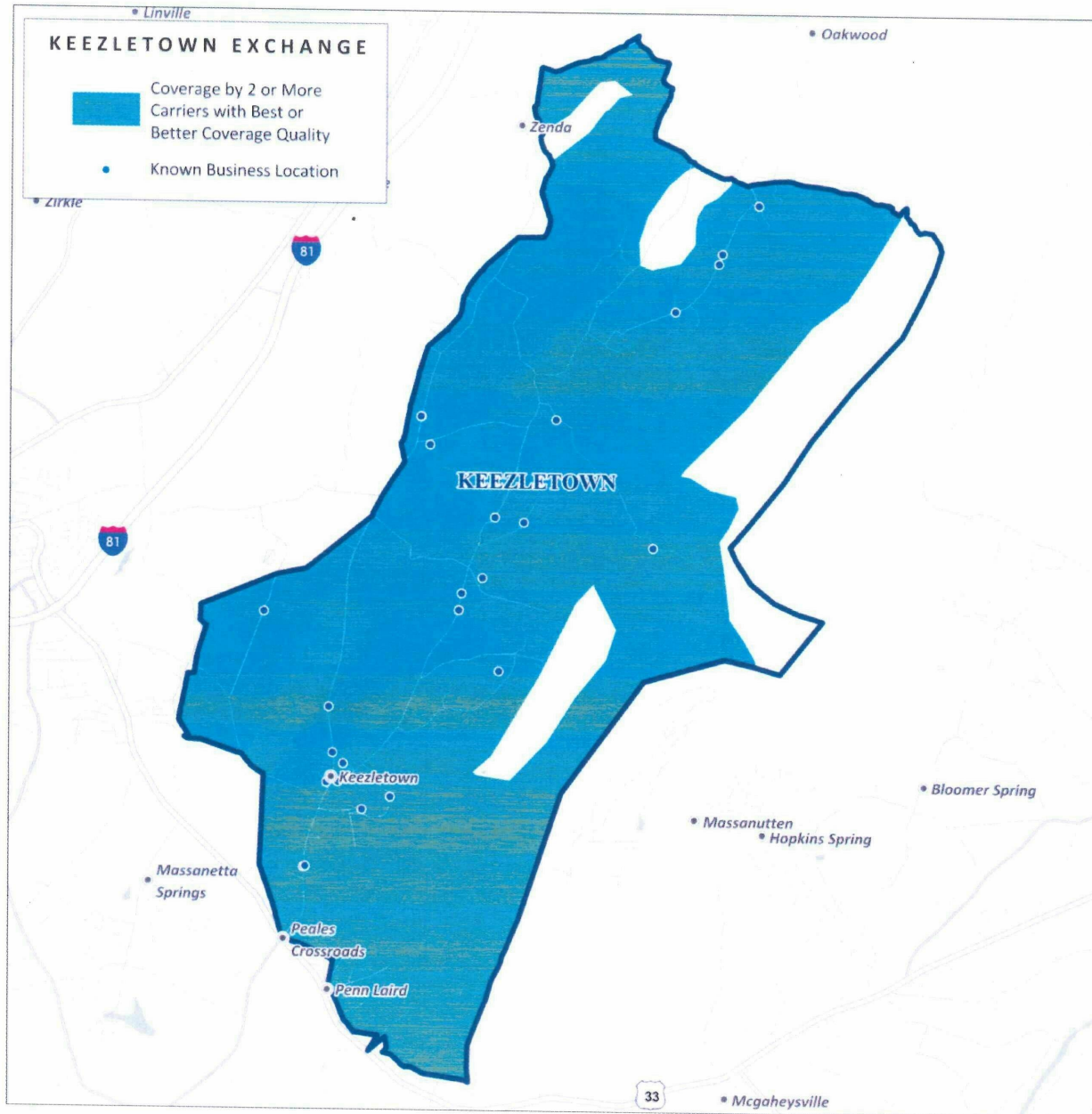


*582 Businesses  
541 Covered*

*93.0% of  
Businesses  
Covered*



# Keezletown – 2+ carriers with Best/Better coverage



*32 Businesses  
32 Covered*

*100% of  
Businesses  
Covered*

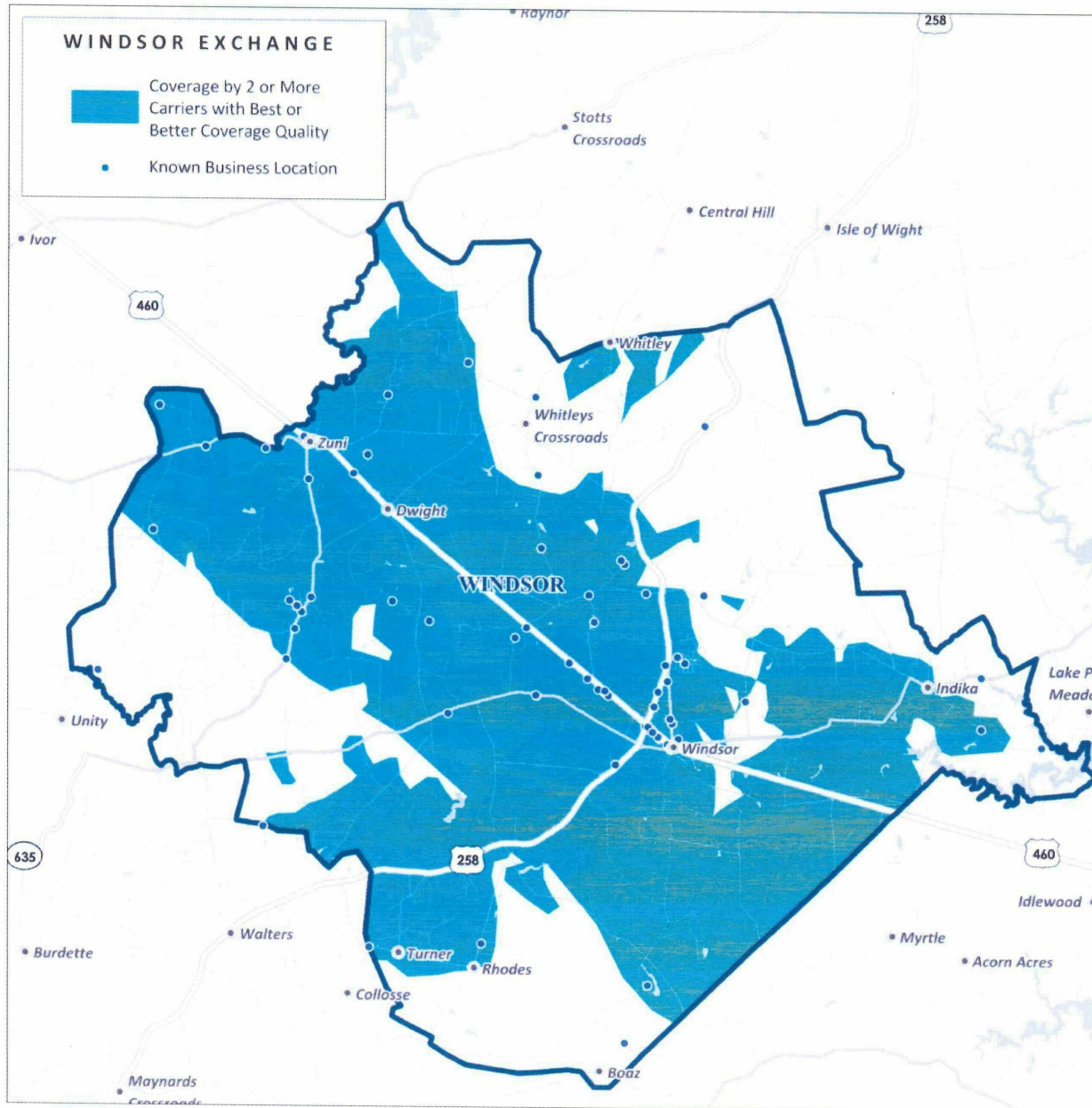
# Raphine – 2+ carriers with Best/Better coverage



*115 Businesses  
98 Covered*

*85.2% of  
Businesses  
Covered*

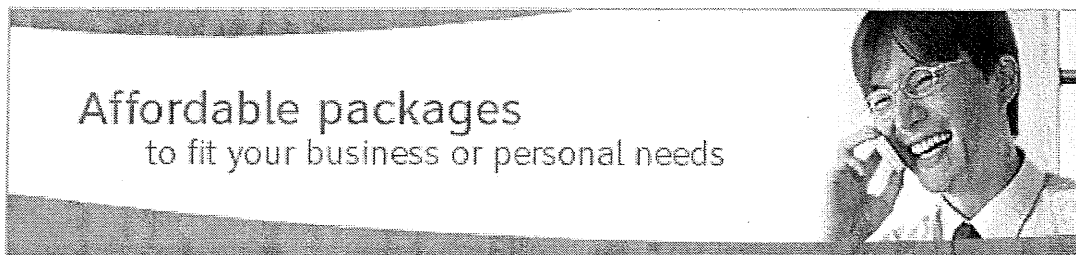
# Windsor – 2+ carriers with Best/Better coverage



*109 Businesses  
86 Covered*

*78.9% of  
Businesses  
Covered*

## Voice Plans



### Business Pooled Nation

The flexibility of pooled minutes across the country.

- Share minutes with other Corporate Responsibility Users around the country on the same account
- No roaming or nationwide long distance charges

### AT&T Nation plans

Think of the entire country as your calling region.

- National calling
- No roaming or nationwide long distance charges

Business Pooled Nation	AT&T Nation Plans
<p>Nationwide reach plus the flexibility of pooled minutes</p> <p>Share minutes with other Corporate Responsibility Users around the country on the same account</p> <p>No roaming or nationwide long distance charges</p> <p>These plans are only available to business customers who have signed qualified national enterprise agreements with AT&amp;T</p>	<p>No roaming or long distance charges across most major cities</p> <p>National calling</p> <p>No roaming or nationwide long distance charges</p>
<p><b>Prices:</b> \$44.99 for up to 450 minutes to \$154.99 for up to 4000 minutes</p>	<p><b>Prices:</b> \$39.99 for up to 450 minutes to \$199.99 for up to 6000 minutes</p>
<p><b>Rate Plan Compatibility:</b> Compatible with GSM/GPRS phones</p>	<p><b>Rate Plan Compatibility:</b> Compatible with GSM/GPRS phones</p>
<p><b>Roaming:</b> No roaming charges nationwide</p>	<p><b>Roaming:</b> No roaming charges nationwide</p>
<p><b>Nights and Weekends:</b> Unlimited Nights and Weekends included</p>	<p><b>Nights and Weekends:</b> Unlimited Nights and Weekends included on plans \$59.99 and higher</p>
<p><b>Long Distance:</b> Nationwide long distance included</p>	<p><b>Long Distance:</b> Nationwide long distance included</p>
<p><b>Activation Fee:</b> \$36 one-time activation fee applies</p>	<p><b>Activation Fee:</b> \$36 one-time activation fee applies</p>



# Business Solutions

Providing your business with outstanding personal service is a key part of our 110+ year old heritage as one of the regions leading communications providers.

[Learn More](#)



## nTelos Nation

No Roaming with Complete Nationwide Coverage.

[Learn More](#)



## nTelos Unlimited

Unlimited minutes on the entire nTelos Network.

[Learn More](#)



## Data Plans

Stay connected with email, mobile web, text messaging and more with a nTelos Data Plan.

[Learn More](#)

## nTelos Nation Plans Covering 96% of U.S. Population

- Contact your local Business AE for customized pricing and available volume discounts.
- No Roaming with Complete Nationwide Coverage
- Nights Start at 7 PM
- Unlimited Mobile-to-Mobile\*
- Unlimited Nights and Weekends

Plans	Daytime Minutes	Nights & Weekends	Mobile-to-Mobile	
Shared Rate	<b>\$29.99/mo</b>	300	Unlimited	Unlimited
	\$19.99	<b>\$39.99/mo</b>	600	Unlimited
Unlimited	\$19.99	<b>\$49.99/mo</b>	1000	Unlimited
Unlimited	\$19.99	<b>\$59.99/mo</b>	1200	Unlimited
Unlimited	\$9.99	<b>\$79.99/mo</b>	1600	Unlimited
Unlimited	\$9.99	<b>\$99.99/mo</b>	2200	Unlimited
Unlimited	\$9.99	<b>\$99.99/mo</b>	Unlimited	Unlimited
		Unlimited	-	

## Business Data

**Contact your local Business AE for customized pricing and available volume discounts.**

Unlimited Text, Pics and Video Messages	<b>\$9.99/mo. per line</b>
Unlimited Mobile Web, Data and BREW Access	<b>\$9.99/mo. per line</b>
Unlimited Mobile Web, Data and BREW Access for Smartphones	<b>\$29.99/mo. per line</b>
Unlimited Blackberry Internet Service	<b>\$29.99/mo. per line</b>
Unlimited BlackBerry® Enterprise Service	<b>\$39.99/mo. per line</b>
Wireless Smartphone E-mail Service powered by Nokia Intellisync	<b>\$14.99/mo. per line</b>

### Data Cards

50 MB Mobile Broadband	<b>\$29.99/mo. per line</b>
Unlimited Mobile Broadband	<b>\$39.99/mo. per line</b>

**Please contact your personal Account Executive for group rate information.**



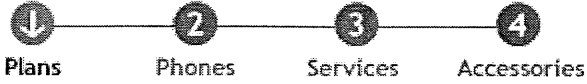
[About nTelos](#) | 
 [nTelos.com](#) | 
 [Investor Relations](#) | 
 [My nTelos](#) | 
 [Accessibility](#)  
[Agreements & Terms](#) | 
 [Careers](#) | 
 [Site Map](#) | 
 [nTelos Pavilion](#) | 
 [Wireless Amber](#)

© 2009 nTelos Inc. All Rights Reserved.



Phones | Plans | Accessories | Shopping Cart  
**Business Private Store**

Businesses purchasing with a Federal Tax ID get special pricing on select devices below. Not ready to purchase?  
 Return to the Business Solutions home page or the Sprint.com home page.



Retrieve my Saved Cart |  
 You are shopping in Franklin, VA 23851

**Narrow My List >**  Direct Connect  Individual  Share  Business  Mobile Broadband  
 Any Mobile, Anytime<sup>SM</sup>

### Business Advantage Talk

Maximize your minutes with a wide-variety of Anytime Minute options, you can mix and match so you buy minutes. For more information on our plans, contact your account rep or call us at 866-805-9890 to discuss your plan options.)

**This plan includes**

Unlimited Direct Connect: Direct Connect and Group Connect (for capable phones)

Talk: Anytime Minutes to share between all Business Advantage plan subscribers on the same account, Unlimited mobile to mobile, night calling and weekends starting at 7 p.m., nationwide long distance and no roaming charges

More about what's included in this plan

Anytime Minutes	Monthly Price	Additional Anytime Minutes
200	\$29.99	25¢/min
450	\$39.99	25¢/min
900	\$59.99	25¢/min
1350	\$79.99	25¢/min
2000	\$99.99	25¢/min
4000	\$149.99	25¢/min

### Business Advantage Talk - Direct Connect®

Maximize your minutes with a wide-variety of Anytime Minute options, you can mix and match so you buy minutes. For more information on our plans, contact your account rep or call us at 866-805-9890 to discuss your plan options.)

**This plan includes**

Unlimited Direct Connect: Direct Connect and Group Connect (for capable phones)

Talk: Anytime Minutes to share between all Business Advantage plan subscribers on the same account, Unlimited mobile to mobile, night calling and weekends starting at 7 p.m., nationwide long distance and no

*On a Business Essentials plan?*

*We have plan options just for you.*

[→ Learn more](#)

roaming charges

Learn more about what's included in this plan

Anytime Minutes	Monthly Price	Additional Anytime Mir
200	\$29.99	25¢/min
450	\$39.99	25¢/min
900	\$59.99	25¢/min
1350	\$79.99	25¢/min
2000	\$99.99	25¢/min
4000	\$149.99	25¢/min

### Business Advantage Messaging

Shhh.... Stuck in a meeting? Your employees can still communicate without saying a word with this plan ar Minutes to share between all your Business Advantage plan subscribers on the same account. (Business Essi rep or call us at 866-805-9890 to discuss your plan options.)

**This plan includes**

Unlimited Direct Connect: Direct Connect and Group Connect (for capable phones)

Unlimited messaging: Text, pictures and video

Talk: Anytime Minutes to share between all Business Advantage plan subscribers on the same account, unlimited mobile to mobile, night calling and weekends starting at 7 p.m., nationwide long distance and no roaming charges

More about what's included in this plan

Anytime Minutes	Monthly Price	Additional Anytime Mir
200	\$39.99	25¢/min
450	\$49.99	25¢/min
900	\$69.99	25¢/min
1350	\$89.99	25¢/min
2000	\$109.99	25¢/min
4000	\$159.99	25¢/min

### Business Advantage Messaging - Direct Connect®

Shhh.... Stuck in a meeting? Your employees can still communicate without saying a word with this plan ar Minutes to share between all your Business Advantage plan subscribers on the same account. (Business Essi rep or call us at 866-805-9890 to discuss your plan options.)

**This plan includes**

Unlimited Direct Connect: Direct Connect and Group Connect (for capable phones)

Unlimited messaging: Text, pictures and video



Talk: Anytime Minutes to share between all Business Advantage plan subscribers on the same account, unlimited mobile to mobile, night calling and weekends starting at 7 p.m., nationwide long distance and no roaming charges

More about what's included in this plan

Anytime Minutes	Monthly Price	Additional Anytime Mir
200	\$39.99	25¢/min
450	\$49.99	25¢/min
900	\$69.99	25¢/min
1350	\$89.99	25¢/min
2000	\$109.99	25¢/min
4000	\$159.99	25¢/min

### Business Advantage Messaging and Data - with Any Mobile, Anytime<sup>SM</sup>

Introducing Any Mobile, Anytime, forget about restrictive calling circles. Our Everything Data plans give you any mobile, anytime while on the Sprint Network. That's access to over 250 million U.S. mobile phones na

#### This plan includes

Any Mobile, Anytime: Unlimited domestic calls from the Sprint network to and from ANY U.S. mobile phone regardless of carrier. Any network, any time.

Unlimited data: Web surfing, email, BlackBerry Internet Services (BIS), GPS Navigation, Music Premier, TV Premier, NFL Mobile Live, NASCAR Sprint Cup Mobile<sup>SM</sup>

Unlimited Direct Connect: Direct Connect and Group Connect (for capable phones)

Unlimited messaging: Text, pictures and video

Talk: Night calling and weekends starting at 7 p.m., nationwide long distance and no roaming charges

More about what's included in this plan

Anytime Minutes	Monthly Price	Additional Anytime Mir
200	\$59.99	25¢/min
450	\$69.99	25¢/min
900	\$89.99	25¢/min
1350	\$109.99	25¢/min
2000	\$129.99	25¢/min
4000	\$179.99	25¢/min

### Business Advantage Messaging and Data - Direct Connect<sup>®</sup> - with Any Mo

Introducing Any Mobile, Anytime, forget about restrictive calling circles. Our Everything Data plans give you any mobile, anytime while on the Sprint Network. That's access to over 250 million U.S. mobile phones na

**This plan includes**

Any Mobile, Anytime: Unlimited domestic calls from the Sprint network to and from ANY U.S. mobile phone regardless of carrier. Any network, any time.

Unlimited data: Web surfing, email, BlackBerry Internet Services (BIS), GPS Navigation, Music Premier, TV Premier, NFL Mobile Live, NASCAR Sprint Cup Mobile<sup>SM</sup>

Unlimited Direct Connect: Direct Connect and Group Connect (for capable phones)

Unlimited messaging: Text, pictures and video

Talk: Night calling and weekends starting at 7 p.m., nationwide long distance and no roaming charges

More about what's included in this plan

Anytime Minutes	Monthly Price	Additional Anytime Mir
200	\$59.99	25¢/min
450	\$69.99	25¢/min
900	\$89.99	25¢/min
1350	\$109.99	25¢/min
2000	\$129.99	25¢/min
4000	\$179.99	25¢/min

**Nextel Direct Connect® Custom Plans**

Do you rely on push-to-talk? Try our Nextel Direct Connect Custom Plans. Pick either Unlimited Work Group Work Group Communications + Web and Navigation (\$39.99/\$49.99). Then add voice minutes to share.

**This plan includes**

Unlimited Direct Connect: Direct Connect and Group Connect

Unlimited Messaging: Text, pictures and video

Talk: Unlimited mobile to mobile, night calling and weekends starting at 9 p.m., nationwide long distance and no roaming charges

More about what's included in this plan

**Additional plan options**

• **Unlimited Web and Navigation**  
Surf the Net as easily as you do from turn-by-turn driving directions, ma

• **Anytime minutes**  
Available to all Nextel Direct Connect account.

- 500 Anytime minutes - \$30/month
- 2,500 Anytime minutes - \$100/month

	Anytime Minutes	Monthly Price	Addition
Work Group Communications	0	\$29.99	
Work Group Communications + Web and Navigation	0	\$39.99	

Features included in all voice plans.

**Terms & Conditions**

Your Privacy Rights | Acceptable Use Policy and Visitor Agreement | Copyright Notices | Contact Us

© 2009 Sprint. All rights reserved.



Skip Navigation

Coverage Store I

My T-Mobile:  Ph

Discover Shop Connect and Share Support  
 Phones Plans Services Accessories Deals Business

English Español

Home > Plans > Business Plans

**What type of plan are you looking for?**

- Even More
- Even More Plus
- Prepaid
- T-Mobile @Home
- Internet & Email
- Business

**Business Plans**

- National Small Business
- National Business
- Enterprise Business



**National Small Business Plans**

Get the time you need to build your business with up to 4,500 Whenever Minutes®, unlimited nationwide T-Mobile to calling, features like Enhanced VoiceMail and built-in paging, and no roaming or long distance charges. You get two li plus up to three more lines.

Plan name	Whenever Minutes	Weeknight Minutes	Weekend Minutes	Price per month
Small Business 1000	1000	Unlimited	Unlimited	<b>\$69<sup>.99</sup></b>
Small Business 2000	2000	Unlimited	Unlimited	<b>\$99<sup>.99</sup></b>
Small Business 3000	3000	Unlimited	Unlimited	<b>\$129<sup>.99</sup></b>
Small Business 4500	4500	Unlimited	Unlimited	<b>\$199<sup>.99</sup></b>

**National Business Plans**

Help your employees stay connected even when they're on the move, with up to 5000 Whenever Minutes®, unlimited T-Mobile calling, and messaging capabilities.

Plan name	Whenever Minutes	Weeknight Minutes	Weekend Minutes	Price per month
National Business Plan 300	300	None	Unlimited	<b>\$29<sup>.99</sup></b>
National Business Plan 600	600	None	Unlimited	<b>\$39<sup>.99</sup></b>
National Business Plan 1000	1000	None	Unlimited	<b>\$49<sup>.99</sup></b>
National Business Plan 1500	1500	None	Unlimited	<b>\$59<sup>.99</sup></b>
National Business Plan 2500	2500	None	Unlimited	<b>\$99<sup>.99</sup></b>
National Business Plan 5000	5000	None	Unlimited	<b>\$129<sup>.99</sup></b>

**Enterprise Business Plans**

Flexible, cost-efficient, and tailored to your needs, T-Mobile Enterprise Business Plans combine the connectivity of ou

Business Plans with the convenience of shared plan minutes. Call a T-Mobile Business Representative for pricing info

**All T-Mobile Enterprise Business Plans include:**

- Pooled national Whenever Minutes®
- Unlimited mobile-to-mobile calling
- Unlimited nights
- Unlimited Weekends
- Caller ID
- VoiceMail
- Conference calling
- Call waiting
- Call forwarding

Prices exclusive to T-Mobile.com and valid only with new service activation.

Minimum 1-year contract required, call 1-888-537-4242 or visit one of our T-Mobile stores.

Shop: [Check Order Status](#) [Return Policy](#) [HotSpot](#) [Business](#) [Puerto Rico](#)

T-Mobile for: [Developers](#) [Retailers](#) [Affiliates](#)

Company: [About T-Mobile](#) [Jobs](#) [Press](#) [Deutsche Telekom](#) [International](#) [Contact Us](#)

Legal: [Privacy Policy](#) [Privacy Resources](#) [Language Assistance](#) [Public Safety/911](#) [Terms & Conditions](#) [Terms of Use](#)

©2002-2009 T-Mobile USA, Inc.



# BUSINESS SERVICES

## Calling Plans

### Individual Calling Plans (1 Line)

Choose from calling plans with generous Anytime Minutes and added flexibility:

Wide variety of consumer plans to meet your needs.  
Prepaid Wireless service for short-term needs and budget management.

### Business Calling Plans (2+ Lines)

These cost-efficient plans bundle your total minutes for all plan users to share, maximizing your total Anytime Minutes and reducing the risk of overage charges. Choose from:

**BizShare<sup>SM</sup>** — Add up to 24 lines and share your minutes<sup>SM</sup> with all users on the same plan. Gain maximum flexibility and convenience with your choice of up to two features at no extra charge:

- Unlimited Incoming Calls
- Unlimited Mobile-to-Mobile Calling
- Unlimited Night and Weekend Minutes

**BlackBerry<sup>®</sup> Wireless Solution** – Receive and send e-mails, make calls, access the Internet and manage your schedule on the go.

**Windows Mobile<sup>®</sup> Smartphones** - Voice calling coupled with wireless e-mail, Web and multimedia for personal and business use.

### Business Calling Plans (10+ Lines)

As your business grows, so do our services. Choose from these plans:

**Business Community Plan** - Pool your plan minutes among all users.

**Corporate Custom Plan** - Pay for only the minutes used with a low monthly access fee per line. As more employees are added to the account, both access and usage rates are discounted.

**BlackBerry Wireless Solution** - Receive and send e-mails, make calls, access the Internet and manage your schedule on the go.

**Windows Mobile Smartphones** - Voice calling coupled with wireless e-mail, Web and multimedia for personal and business use.

## Helpful Links

- Business Services Home
- About U.S. Cellular
- Account Management
- Coverage Maps
- Industry-specific Solutions

## Priority Business Customer Service:

1-800-819-9373

## New Business Sales:

1-866-USC-4BIZ  
(1-866-872-4249)  
8 a.m. - 8 p.m. (CENTRAL)  
Monday - Friday

