

Stephen C. Spencer
Director - Regulatory

STATE CORPORATION COMMISSION
RECEIVED

AUG 13 2010

DIVISION OF COMMUNICATIONS
RICHMOND, VA



703 E. Grace Street
Richmond, VA 23219

Phone 804 772-1585
Fax 804 772-3817
steve.spencer@verizon.com

August 13, 2010

Virginia State Corporation Commission
Communications Division
Mr. William Irby, Director
9th Floor, Tyler Building
1300 East Main Street
Richmond, Virginia 23219

Dear Mr. Irby:

Attached, in triplicate, for filing with your Honorable Commission are the following proposed Verizon South Inc. ("Verizon") tariffs pages to become effective September 27, 2010.

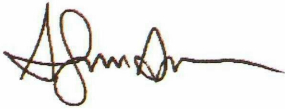
VERIZON SOUTH INC.
GENERAL CUSTOMER SERVICES TARIFF
Section 3, Fourteenth Revised Page 4
Twenty-First Revised Page 5
Eighteenth Revised Page 6
Sixteenth Revised Page 7
Eighteenth Revised Page 8
Seventeenth Revised Page 10
Fourteenth Revised Page 32
Twenty-First Revised Page 33
Sixteenth Revised Page 34
Sixteenth Revised Page 35
Seventeenth Revised Page 36
Seventeenth Revised Page 38
Eleventh Revised Page 69
Fifteenth Revised Page 71
Fourteenth Revised Page 72
Thirteenth Revised Page 73

VERIZON SOUTH INC.
COMPETITIVE PRICED LOCAL EXCHANGE SERVICES TARIFF, S.C.C.-Va.-No. 220
Section 1B, Sixth Revised Page 1
Section 1B, First Revised Page 1.1
Section 1D, Fourth Revised Page 1

In this filing are the proposed tariff pages deregulating the price of residential BLETs service in the Bluefield, Broadway, Chancellor, Chuckatuck, Grottoes, Richlands, Smithfield, Warsaw and Windsor exchanges. Supporting documents for each exchange is attached.

If you have any questions or require additional information regarding this filing, please contact me.

Yours truly,

A handwritten signature in black ink, appearing to be "Katie Cummings", written over a horizontal line.

cc: Katie Cummings

Attachments

Competitiveness Test

Bluefield, Broadway, Chancellor, Chuckatuck, Grottoes,
Richlands, Smithfield, Warsaw and Windsor Exchanges

Step A

A minimum of 75% of the households in the telephone exchange area can choose telephone service from among at least two (2) competitors to Verizon

This test is met by the combined coverage of a number of wireless competitors, including AT&T Wireless, nTelos Wireless, Sprint, and T-Mobile, and by “Over the Top” VoIP providers including Vonage, Lingo, Broadvoice, Skype, ooma and others. According to FCC data, 2.4M Virginia households subscribe to broadband service*, representing 82% of the 2.9M households in Virginia. Within the above exchanges, broadband services are available to at least 75% of the households. (see Attachment A).

Step B

A minimum of two (2) of the competitors to Verizon in “Step A” must offer local telephone service that may be purchased by the household without a corresponding requirement to purchase non-telecommunications services (e.g., video or broadband internet service) from that competitor.

This test is met by the combined coverage of a number of wireless competitors, including AT&T Wireless, nTelos Wireless, Sprint, and T-Mobile, and by “Over the Top” VoIP providers including Vonage, Lingo, Broadvoice, Skype, ooma and others. According to FCC data, 2.4M Virginia households subscribe to broadband service*, representing 82% of the 2.9M households in Virginia. Within the above exchanges, broadband services are available to at least 75% of the households. (see Attachment A).

Step C

At least 50% of the households in the telephone exchange area can choose a facilities-based competitor that owns its own wireline network facilities

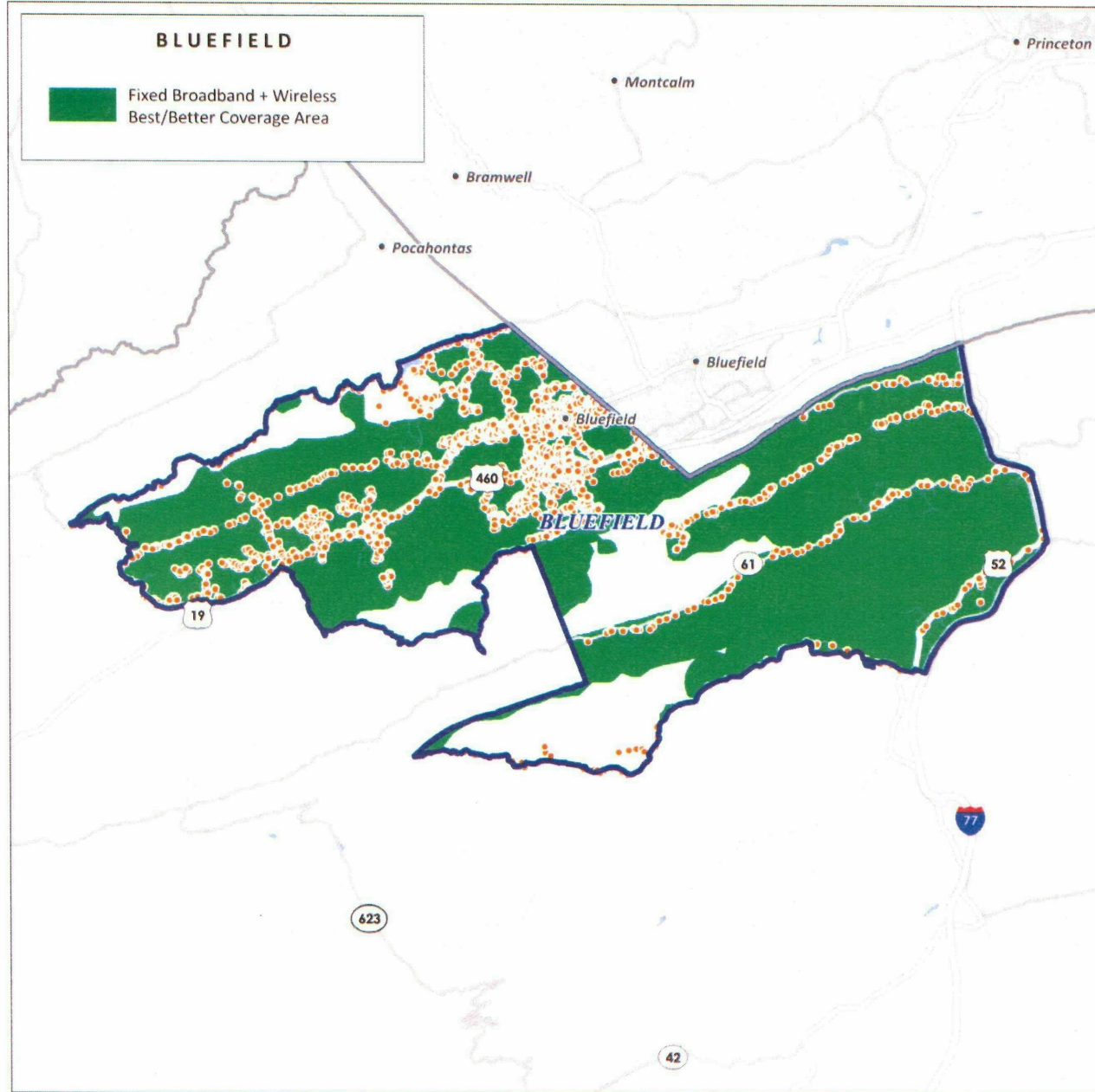
This test is met by the combined coverage of a number of wireless competitors, including AT&T Wireless, nTelos Wireless, Sprint, and T-Mobile. (See Attachment A).

*Source: Page 42 of http://hraunfoss.fcc.gov/edocs_public/attachmatch/DOC-296239A1.pdf

ATTACHMENT A

**Bluefield, Broadway, Chancellor, Chuckatuck, Grottoes,
Richlands, Smithfield, Warsaw and Windsor Exchanges**

Bluefield

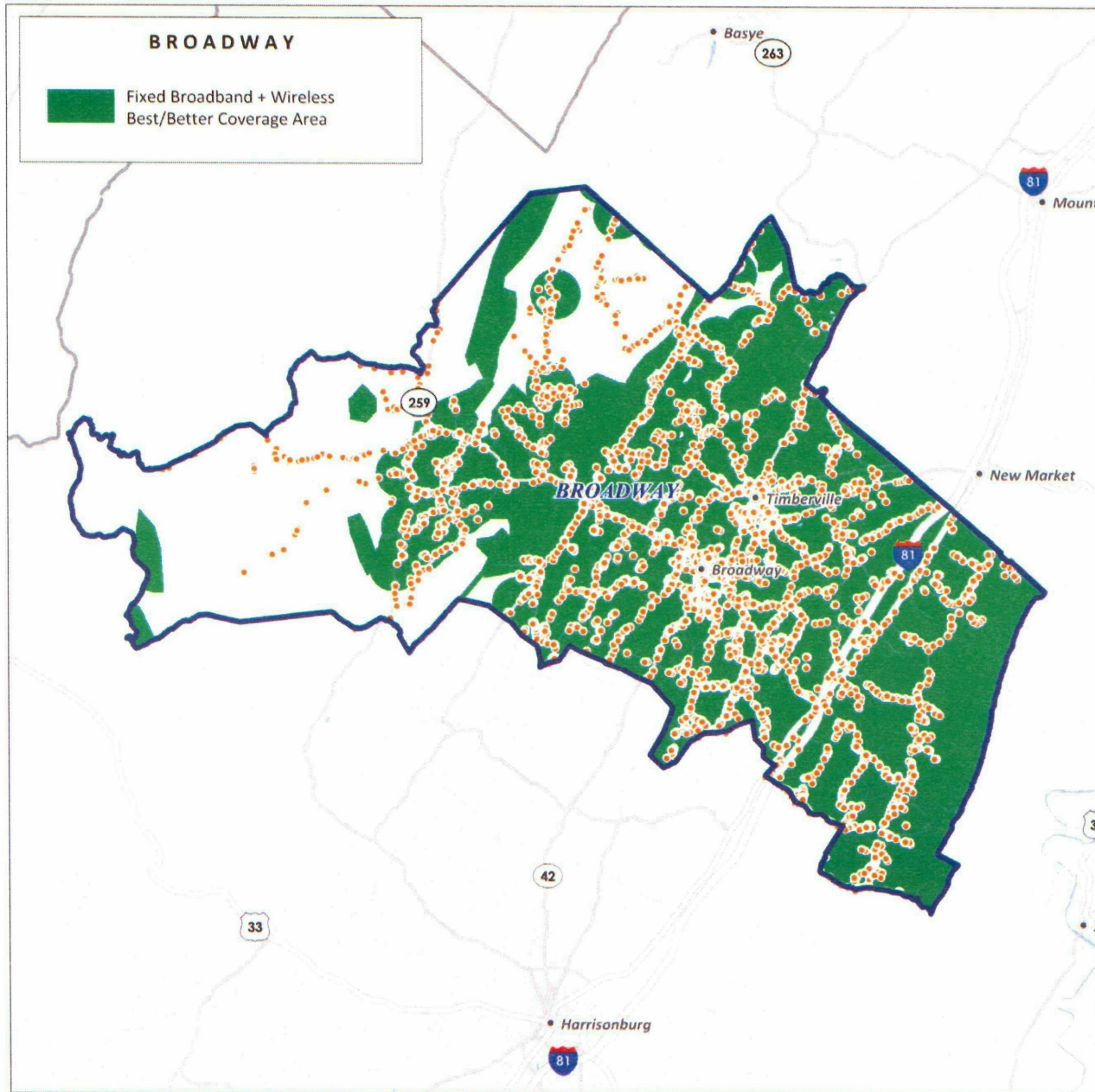


4,093 Households

*86.4% of Households
Covered by
Broadband*

*94.4% of Households
Covered by Best /
Better Wireless*

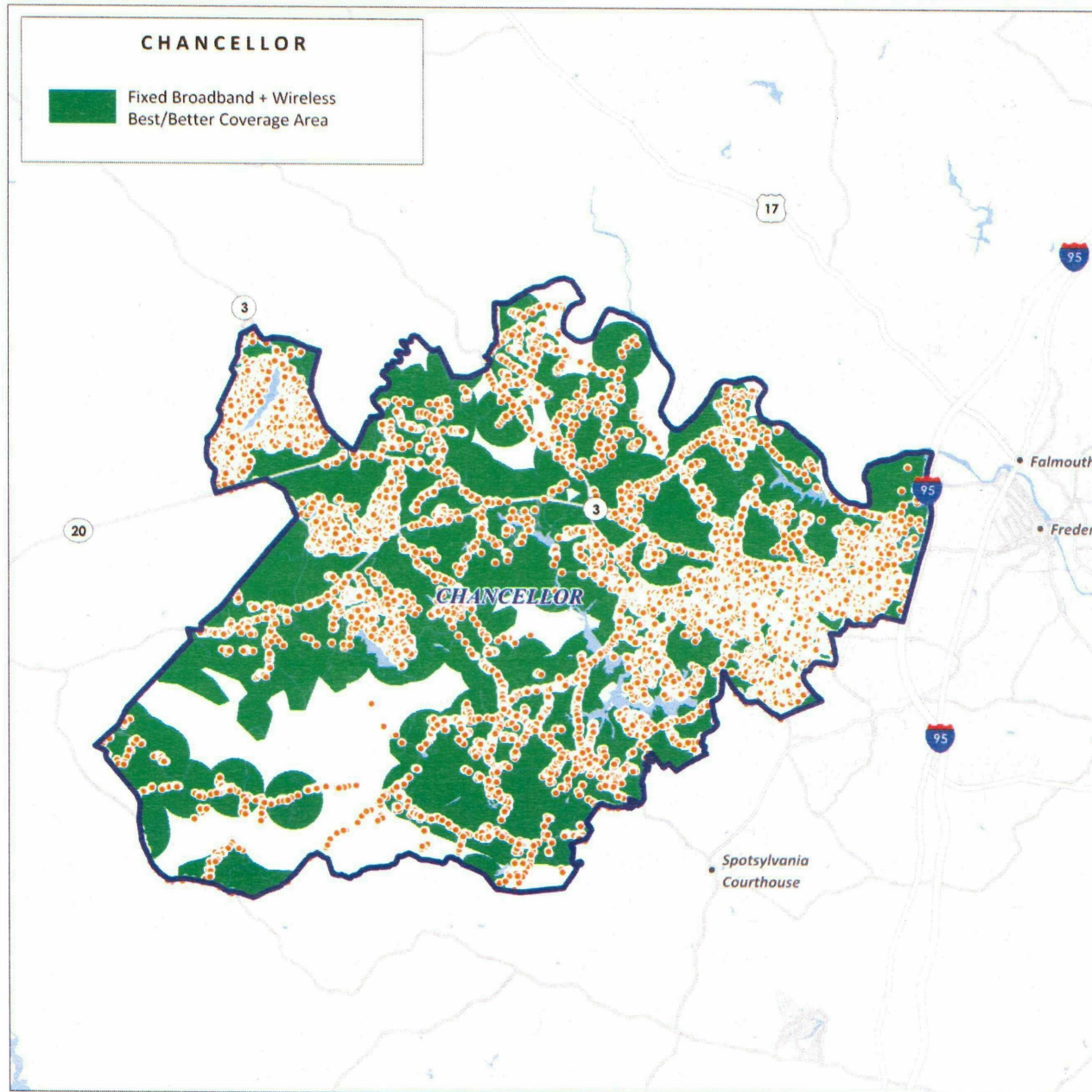
Broadway

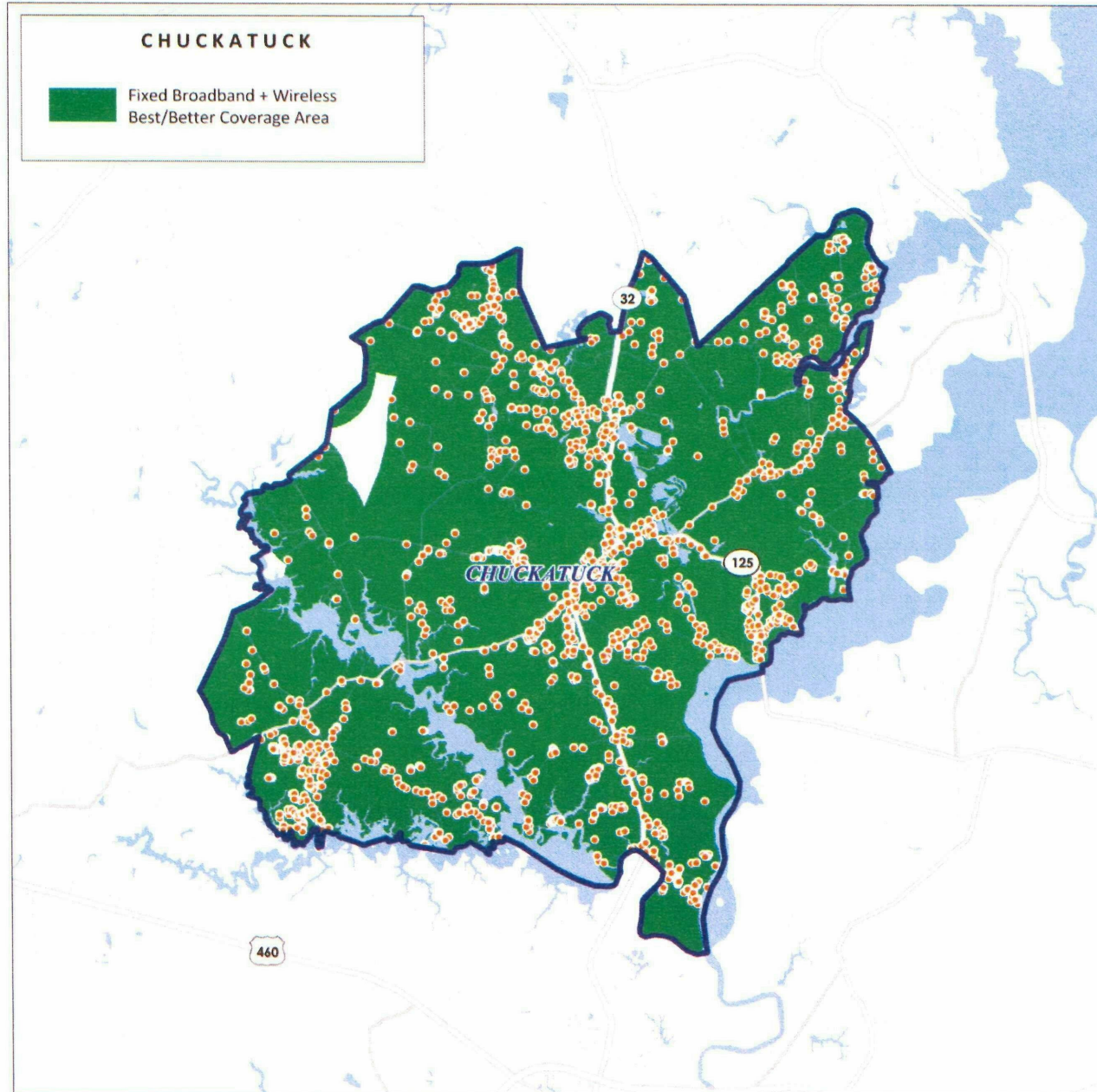


5,363 Households

*76.0% of Households
Covered by
Broadband*

*90.4% of Households
Covered by Best /
Better Wireless*

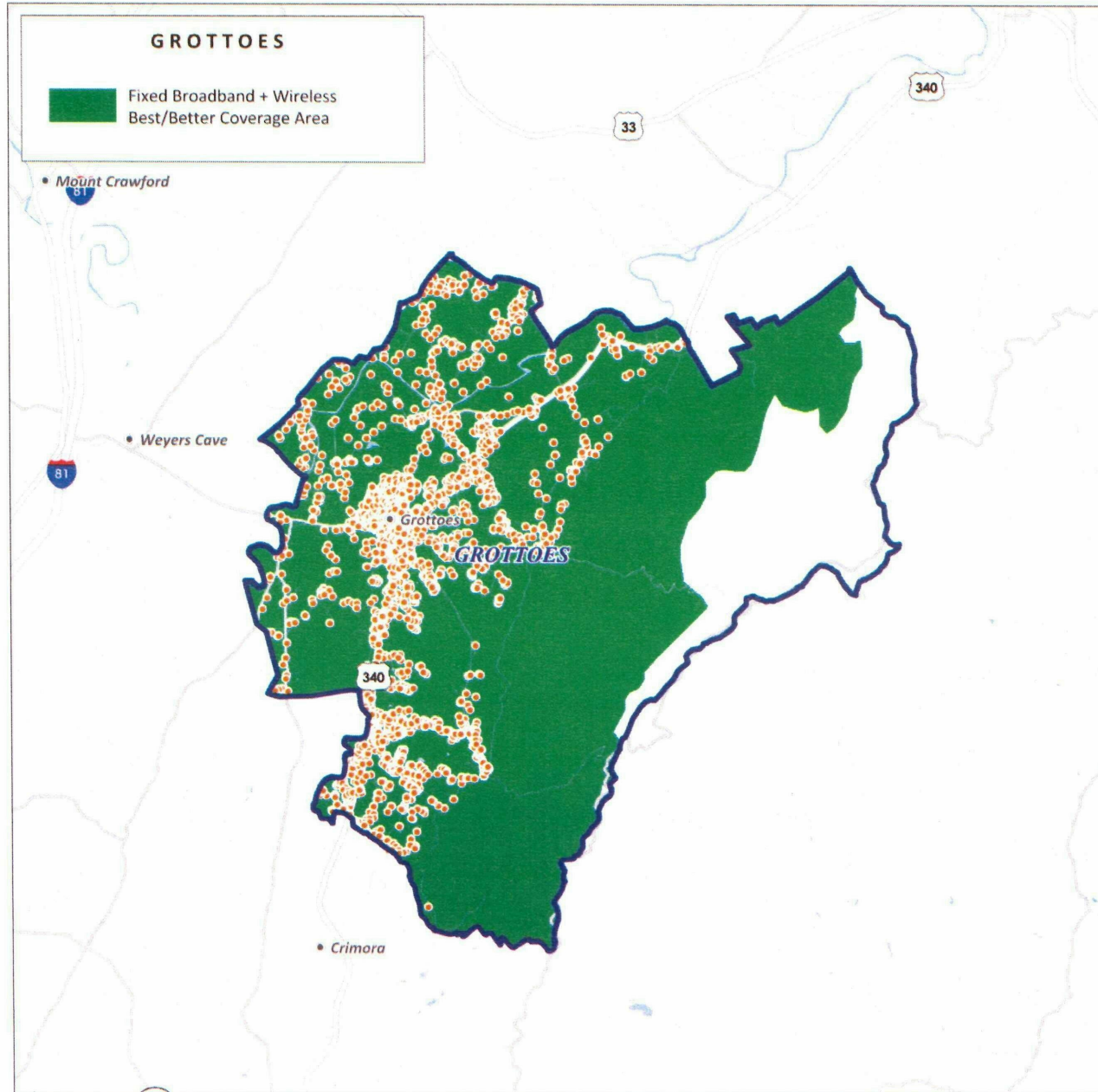




1,548 Households

*99.1% of Households
Covered by
Broadband*

*91.9% of Households
Covered by Best /
Better Wireless*

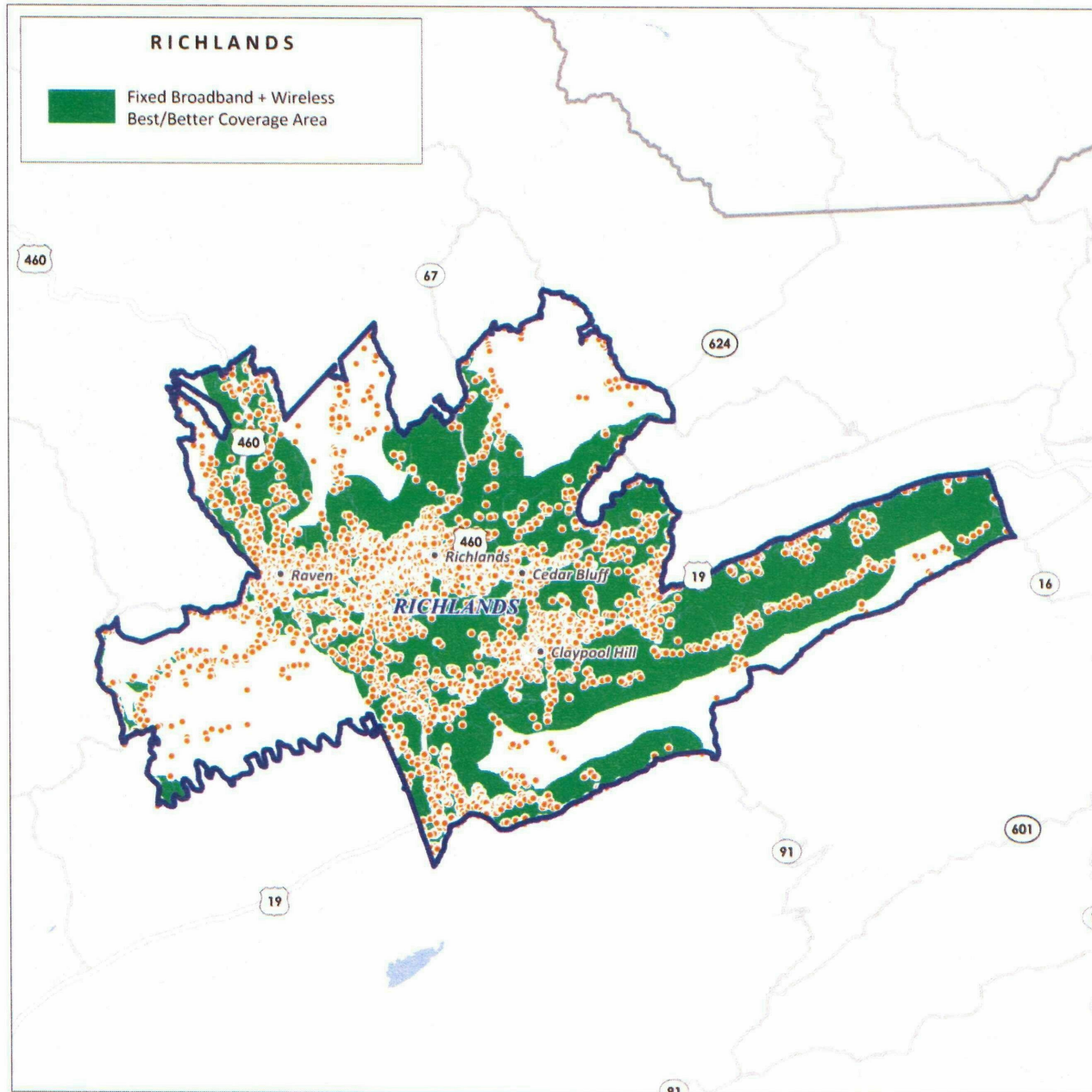


2,908 Households

*100% of Households
Covered by
Broadband*

*92.8% of Households
Covered by Best /
Better Wireless*

Richlands

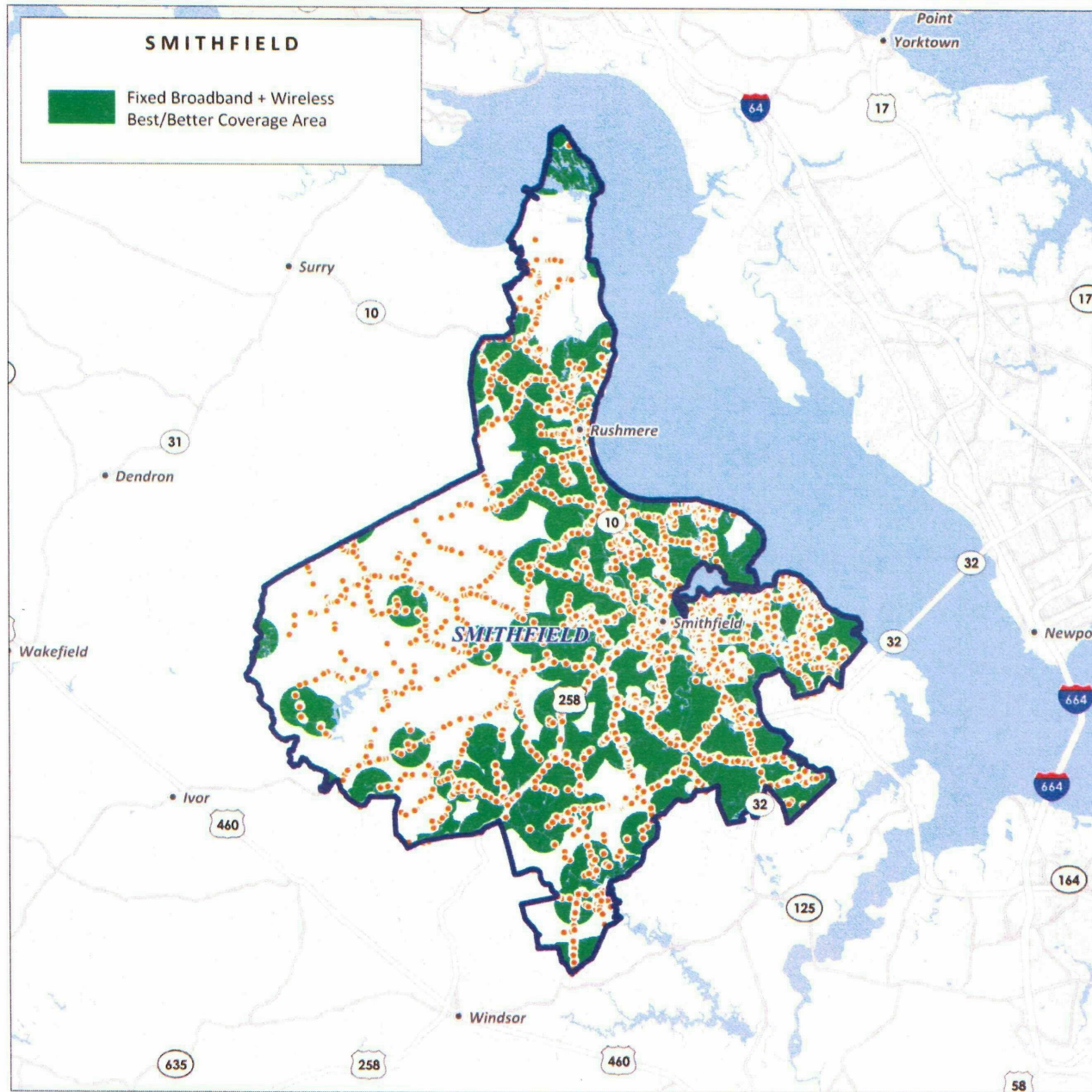


7,502 Households

75.7% of Households Covered by Broadband

92.1% of Households Covered by Best / Better Wireless

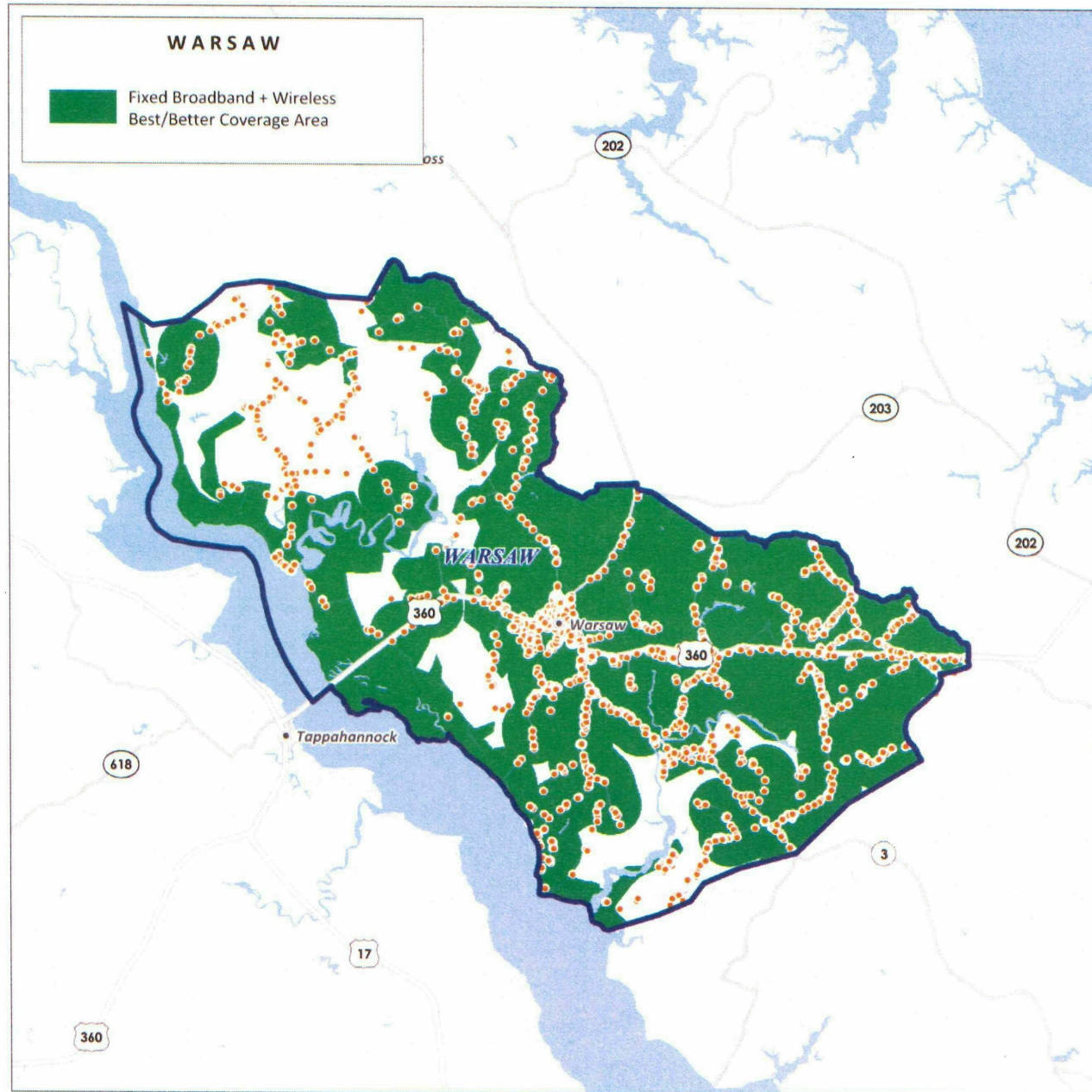
Smithfield



7,790 Households

*80.0% of Households
Covered by
Broadband*

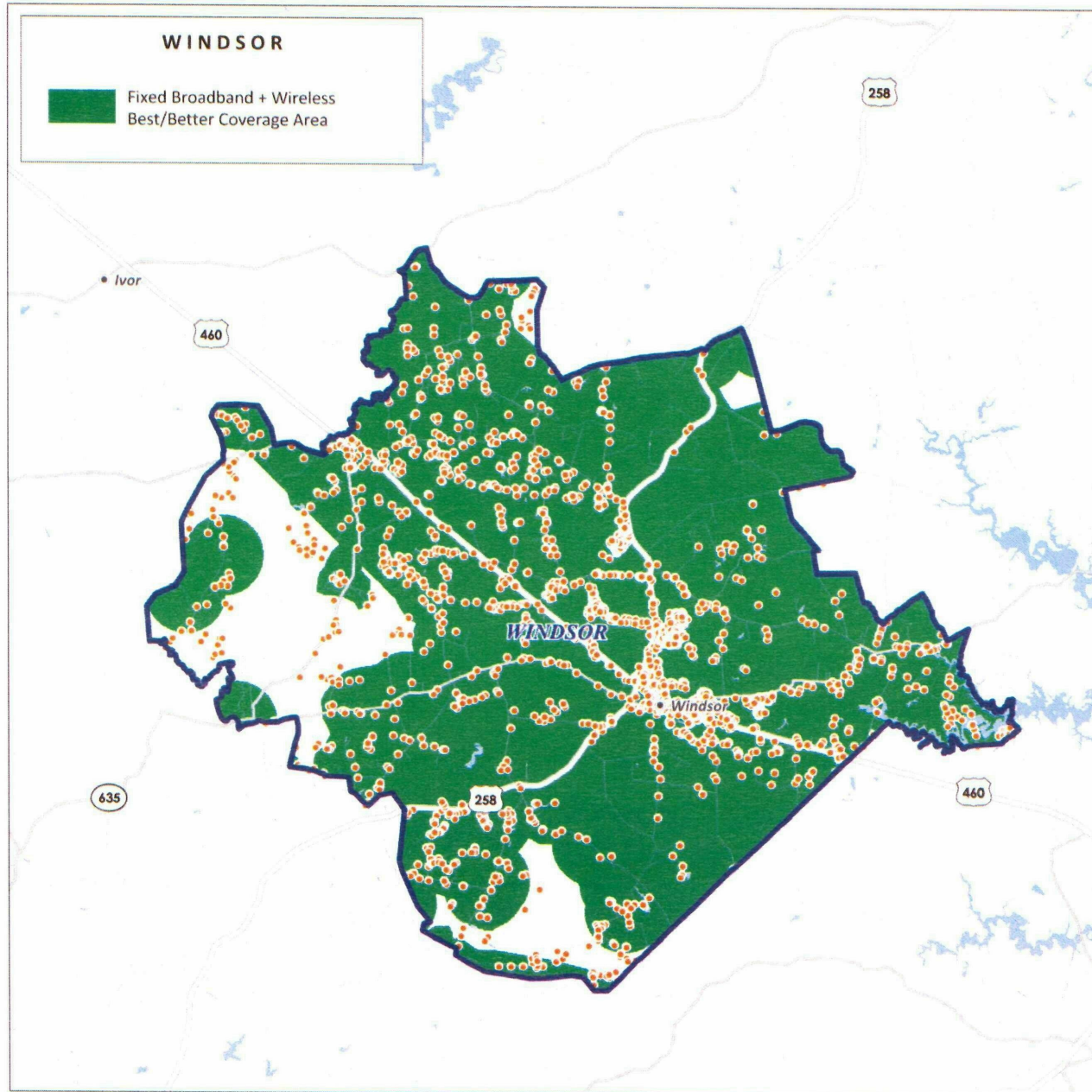
*88.7% of Households
Covered by Best /
Better Wireless*



2,053 Households

*75.8% of Households
Covered by
Broadband*

*75.6% of Households
Covered by Best /
Better Wireless*



2,485 Households

*91.3% of Households
Covered by
Broadband*

*84.1% of Households
Covered by Best /
Better Wireless*



Skip To Content [att.com](#) [Wireless Home](#) [Personal](#) [Business Center](#) [About Us](#) [My Account](#)

[Find a Store](#) [Coverage Viewer](#) [Español](#) [Cart](#) [Search](#) [Go](#)

Coverage area: 22572 (WARSAW) [Edit](#)

[Cell Phones & Devices](#) [Cell Phone Plans](#) [Prepaid GoPhone](#) [Services](#) [Ringtones & Apps](#) [Accessories](#) [Packages & Deals](#)

Individual Plans

[Family Plans](#)

[Prepaid Plans](#)

[Pay As You Go](#)

[Data Plans](#)

Individual Cell Phone Plans

AT&T, the nation's fastest 3G Network, offers a variety of individual cell phone plans where you'll enjoy:

- **Unlimited** calling to other AT&T wireless customers with **Mobile to Mobile** while in the U.S.
- **No roaming or long distance charges** in the U.S.
- **Saving unused minutes with Rollover®**
- **Get unlimited calling to and from your favorite U.S. phone numbers at no extra charge with A-list.** [Details](#)
- **Unlimited calling on Nights and Weekends** for most plans

On the road again? Check out our national coverage in areas you plan to visit.

[View national map](#)

[View Canada map](#)

Nation Plans

Minutes	Monthly Cost	Rollover®	Unlimited Nights/Weekends*	Unlimited Mobile to Mobile	A-List†	Additional Details
450	\$39.99	✓	Includes 5000	✓		View Details
900	\$59.99	✓	✓	✓	✓	View Details
Unlimited	\$69.99		✓	✓		View Details

Nation with Canada Plans

No long distance or roaming charges for voice calls between the US and Canada and a data pay-per-use rate of \$2/MB in Canada.

Minutes (U.S. + Canada)	Monthly Cost	Rollover®	Included Nights/Weekends (U.S. + Canada)	Unlimited Mobile to Mobile in the U.S.**	A-List†	Additional Details
-------------------------	--------------	-----------	--	--	---------	--------------------

Get live help placing your order. [Chat Now](#)

450	\$59.99	✓	Includes 1000	✓		View Details
900	\$79.99	✓	Includes 1000	✓	✓	View Details
1350	\$99.99	✓	Includes 1000	✓	✓	View Details
2000	\$119.99	✓	Includes 1000	✓	✓	View Details
4000	\$169.99	✓	Includes 1000	✓	✓	View Details
6000	\$219.99	✓	Includes 1000	✓	✓	View Details

online pricing and some restrictions apply. *Unlimited weekday minutes (9am-9pm) from 9pm to 6am and unlimited minutes on weekends.

** Mobile to Mobile only applies to calls made and received while in the U.S., Puerto Rico, and U.S.V.I.

† Add any U.S. number, on any network - including landline numbers. Calls to and from your A-List numbers are not charged against your rate plan, Mobile to Mobile, or Rollover® minutes. [Details](#)

Senior Plan - Available to customers 65 and older.

Minutes	Monthly Cost	Rollover®	Unlimited Nights/Weekends*	Unlimited Mobile to Mobile	Additional Details
200	\$29.99		Includes 500	✓	View Details Must be 65 or older Verified at checkout

[Other Monthly Charges](#) | [Plan Terms](#) | [Online Pricing](#)
[Returns Policy & Early Termination Fee](#) | [Additional Messaging & Data Charges](#)
[Shipping Information](#)

STAY CONNECTED!

Sign up for email updates with the latest wireless specials. Enter Your Email:

Service provided by AT&T Mobility.

[Wireless Service Agreement](#) | [Cell Phone Records Security](#)

AT&T on the Web

[att.com](#)
Shop. Service. Support.

[att.net](#)
E-mail - News - Weather & More

[Privacy Policy](#) | [Careers](#) | [Contact Us](#) | [Terms of Use](#) | [Site Map](#) | [Accessibility](#)

[English/Español](#) [Coverage](#) [Store Locator](#) [Enter Location](#)

Your Account: [Login / Sign up](#) [Ci](#)



[Shop](#)

[Discover](#)

[Connect and Share](#)

[Support](#)

[Search T-Mobile](#)

[Search](#)

[Phones](#)

[Plans](#)

[Services](#)

[Accessories](#)

[Deals](#)

[Coverage](#)

[Business](#)

Home › Plans › Individual Plans

What type of plan are you looking for?

- [Individual](#)
- [Family](#)
- [Prepaid](#)
- [Internet & Email](#)

Plan Type

- Talk
- Talk + Text
- Talk + Text + Web

Individual Plans

Individual Plans

Choose a plan that fits the way you like to connect—Talk only, Talk + Text, or Talk + Text + Web.

Even MoreSM plans (2 Year Contract) offer great device discounts, so your upfront costs are lower.

Even More PlusSM plans (No Annual Contract) give you our best monthly rate plan pricing, so you'll save money over time.

All our individual plans include:

- Unlimited nationwide T-Mobile to T-Mobile calling
- Unlimited nights and weekends
- Free overage alerts (for non-unlimited plans)
- Whenever Minutes[®] you can use anytime

Pick your plan.

enter zip code To see all available plans, please enter the ZIP Code where you'll be using your phone the most.

[Compare selected plans](#)

Individual Talk

[? What's the difference?](#)

Even More PlusSM (No Annual Contract)

Even MoreSM (2 Year Contract)

Unlimited Minutes

Talk

\$49.99
per month

[More info](#)

\$59.99
per month

compare

1000 Minutes

Talk

\$39.99
per month

\$49.99
per month

compare

500 Minutes

Talk

\$29.99
per month

\$39.99
per month

compare

Individual Talk + Text

[? What's the difference?](#)

Even More PlusSM (No Annual Contract)

Even MoreSM (2 Year Contract)

Unlimited Minutes

Talk + Unlimited Text

\$59.99
per month

\$69.99
per month

compare

1000 Minutes

Talk + Unlimited Text

\$49.99
per month

\$59.99
per month

compare

500 Minutes

Talk + Unlimited Text

\$39.99
per month

\$49.99
per month

compare

Individual Talk + Text + Web

[? What's the difference?](#)

Even More PlusSM (No Annual Contract)

Even MoreSM (2 Year Contract)

Unlimited Minutes

Talk + Unlimited Text +
Unlimited Web

\$79.99
per month

\$99.99*
per month

compare

1000 Minutes

Talk + Unlimited Text +
Unlimited Web

\$69.99
per month

\$89.99*
per month

compare

500 Minutes

\$59.99

\$79.99*



Find a Store Business Shopping Cart

My Sprint **Shop** Digital Lounge Community Support

Packages Phones **Plans** Services Accessories Promotions Coverage Maps Shopping Cart



Got questions? Click to chat. Order by phone 1-866-866-7509

Retrieve my Saved Cart | You are shopping in Smithfield, VA 23431

Narrow My List > Direct Connect Individual Share Mobile Broadband Any Mobile, AnytimeSM [Reset](#)

Everything Data with Any Mobile, AnytimeSM

\$69.99

The competition just can't measure up.

You do the math



Simply Everything®

Everything your phone, PDA or smartphone can do nationwide - unlimited text, surf, email, listen, watch, find and of course, talk - on one simple plan.

This plan includes

Unlimited data on our network: Web surfing, email, BlackBerry Internet Services (BIS), GPS Navigation, Sprint TV and Radio, NASCAR Sprint Cup MobileSM

Unlimited Direct Connect: Direct Connect and Group Connect (for capable phones)

Unlimited messaging: Text, pictures and video

Unlimited talk on our network: Anytime Minutes and nationwide long distance

> [Learn more about what's included in this plan](#)

	Anytime Minutes	Monthly Price	Additional Anytime Minutes	
Best Value	Unlimited	\$99.99	Unlimited	Select

Simply Everything® Family

Everything you need for the whole family - unlimited text, surf, email, listen, watch, find and, of course, talk - on one simple plan.

This plan includes

Unlimited data on our network: Web surfing, email, BlackBerry Internet Services (BIS), GPS Navigation, Sprint TV and Radio, NASCAR Sprint Cup MobileSM

Unlimited Direct Connect: Direct Connect and Group Connect (for capable phones)

Unlimited messaging: Text, pictures and video

Unlimited talk on our network: Anytime Minutes and nationwide long distance

Lines 1-2 included. Lines 3-5 \$89.99/mo./line

[> Learn more about what's included in this plan](#)

	Anytime Minutes	Monthly Price	Additional Anytime Minutes	Lines	
Best Value	Unlimited	\$189.98	Unlimited	2 	Select

Everything Data - with Any Mobile, AnytimeSM

Introducing Any Mobile, Anytime, forget about restrictive calling circles. Our Everything Data plans give you unlimited data, messages and calls to any mobile, anytime while on the Sprint Network. That's access to over 250 million U.S. mobile phones nationwide. Take advantage of unlimited Nationwide messaging, Web surfing, and nights and weekends with nights starting at 7 p.m. [Learn More](#) about how our \$69.99 plan compares to the competition.

This plan includes

Any Mobile, Anytime: Unlimited domestic calls from the Sprint network to and from ANY U.S. mobile phone regardless of carrier. Any network, any time.

Unlimited data on our network: Web surfing, email, BlackBerry Internet Services (BIS), GPS Navigation, Sprint TV and Radio, NASCAR Sprint Cup MobileSM

Unlimited messaging: Text, pictures and video

Talk: Night calling and weekends starting at 7 p.m., nationwide long distance and no roaming charges

[> Learn more about what's included in this plan](#)

Anytime Minutes	Monthly Price	Additional Anytime Minutes	
450	\$69.99	45¢/min	Select
900	\$89.99	40¢/min	Select

Everything Data Family - with Any Mobile, AnytimeSM

Introducing Any Mobile, Anytime, forget about restrictive calling circles. Our Everything Data plans give you unlimited data, messages and calls to any mobile, anytime while on the Sprint Network. That's access to over 250 million U.S. mobile phones nationwide. Our Everything Data Family plan offers families the best value in wireless. For just \$42.50 per line, a family of 4 receives Any Mobile, AnytimeSM plus unlimited Nationwide messaging, Web surfing, and nights and weekends with nights starting at 7 p.m. >>[Learn More](#)

This plan includes

Any Mobile, Anytime: Unlimited domestic calls from the Sprint network to and from ANY U.S. mobile phone regardless of carrier. Any network, any time.

Unlimited data: Web surfing, email, BlackBerry Internet Services (BIS), GPS Navigation, Sprint TV and Radio, NASCAR Sprint Cup MobileSM

Unlimited messaging: Text, pictures and video

Talk: Night calling and weekends starting at 7 p.m., nationwide long distance and no roaming charges. Lines 1-2 included. Lines 3-5 are \$19.99/mo./line.

> [Learn more about what's included in this plan](#)

Additional service options:

Unlimited Nights & Weekends

- [Unlimited Nights & Weekends starting at 7pm!](#) - \$0.00
- [Nights and Weekends starting at 6PM](#) - \$10.00

Anytime Minutes	Monthly Price	Additional Anytime Minutes	Lines	
1500	\$129.99	40¢/min	2	Select
3000	\$169.99	25¢/min	2	Select

Everything Messaging

Communicate without saying a word; with this plan, you can text, share and send your heart out.

This plan includes

Unlimited messaging: Text, pictures and video

Talk: Unlimited Sprint mobile to mobile, night calling and weekends starting at 7 p.m., nationwide long distance and no roaming charges

> [Learn more about what's included in this plan](#)

Anytime Minutes	Monthly Price	Additional Anytime Minutes	
450	\$49.99	45¢/min	Select
900	\$69.99	40¢/min	Select

Everything Messaging Family

Share minutes and text your heart out with unlimited messages.

This plan includes

Unlimited messaging: Text, pictures and video

Talk: Night calling and weekends starting at 7 p.m., nationwide long distance and no roaming charges. Lines 1-2 included. Lines 3-5 are \$9.99/mo./line.

[> Learn more about what's included in this plan](#)

Additional service options:

Unlimited Nights & Weekends

- Unlimited Nights & Weekends starting at 7pm! - \$0.00
- Nights and Weekends starting at 6PM - \$10.00

Anytime Minutes	Monthly Price	Additional Anytime Minutes	Lines	
1500	\$99.99	40¢/min	2	Select
3000	\$149.99	25¢/min	2	Select

Talk

Let your voice be heard with these voice-only plans.

This plan includes

Talk: Unlimited mobile to mobile, night calling and weekends starting at 7 p.m., nationwide long distance and no roaming charges

[> Learn more about what's included in this plan](#)

Additional service options:

Unlimited Nights & Weekends

- Unlimited Nights & Weekends starting at 7pm! - \$0.00
- Nights and Weekends starting at 6PM - \$5.00

Anytime Minutes	Monthly Price	Additional Anytime Minutes	
450	\$39.99	45¢/min	Select
900	\$59.99	40¢/min	Select

Talk for Family

Let your voice be heard with these voice-only shared plans.

This plan includes

Talk: Unlimited mobile to mobile, night calling and weekends starting at 7 p.m., nationwide long distance and no roaming charges. Lines 1-2 included. Lines 3-5 are \$9.99/mo./line.

[> Learn more about what's included in this plan](#)

Additional service options:

Unlimited Nights & Weekends

- Unlimited Nights & Weekends starting at 7pm! - \$0.00
- Nights and Weekends starting at 6PM - \$10.00

Anytime Minutes	Monthly Price	Additional Anytime Minutes	Lines	
700	\$69.99	45¢/min	2 	Select

Basic

Get back to the basics with this plan ideal for the occasional caller.

This plan includes

Talk: Night calling and weekends starting at 9 p.m., nationwide long distance and no roaming charges

[> Learn more about what's included in this plan](#)

Additional service options:

Unlimited Nights & Weekends

- Nights and Weekends - Starting at 9pm - \$0.00
- Nights and Weekends - Starting at 7pm - \$5.00
- Nights and Weekends - Starting at 6pm - \$10.00

Anytime Minutes	Monthly Price	Additional Anytime Minutes	
200	\$29.99	45¢/min	Select

4G/3G Mobile Broadband Connection Plan

Satisfy your need for speed with our superfast 4G connection in [select cities](#). Outside of the 4G area, we've still got you covered with our nationwide 3G network. [Check out 4G coverage and speeds.](#)

This plan includes

Unlimited 4G usage. Download mammoth files, watch streaming videos and video conferencing without the lag. More coverage locations coming soon!

Peak download speeds of over 10 Mbps and average download speeds of 3-6 Mbps

3G coverage nationwide: 5GB/mo. in total or 300 MB/mo. while off-network roaming. Additional monthly usage over 5GB while on network costs 5¢/MB and over 300 MB while off-network roaming costs 25¢/MB. You can check your usage online anytime. Sign into www.sprint.com/mysprint and click on see all usage.

Sprint reserves the right to limit throughput speeds or amount of data transferred. [See what you can do with 5GB or 300MB a month](#) on a 3G connection plan.

[> Learn more about what's included in this plan](#)

Anytime Minutes	Monthly Price	Monthly Usage
-----------------	---------------	---------------



- Family Plans
- Individual Plans
- Prepay Plans +
- Messaging & Data Plans
- Dare to Compare
- Coverage Maps & Locator

nTelos Individual Nation Plans

Discover the most affordable nationwide 3G unlimited plans.

[➔ Dare to Compare with Nationwide 3G Unlimited Smartphone Plans - Click here to learn more.](#)

[Click Here to view nTelos Nations Coverage Map.](#)

Individual nationwide 3G unlimited smartphone talk, text & web

Monthly Fee	Daytime Minutes	Evening & Weekend Minutes	Roaming Minutes	Long Distance	Overage Minutes	Mobile-to-Mobile
\$89.99	Unlimited	Unlimited	\$0.45	Included	-	Unlimited

[Terms & Agreements](#)

Individual nationwide 3G unlimited talk, text & web

Monthly Fee	Daytime Minutes	Evening & Weekend Minutes	Roaming Minutes	Long Distance	Overage Minutes	Mobile-to-Mobile
\$79.99	Unlimited	Unlimited	\$0.45	Included	-	Unlimited

[Terms & Agreements](#)

Individual nationwide 3G unlimited talk & text

Your Phone and Plan

Please choose a phone, a plan, and/or accessories to begin your order.

Monthly Fee	Daytime Minutes	Evening & Weekend Minutes	Roaming Minutes	Long Distance	Overage Minutes	Mobile-to-Mobile
\$69.99	Unlimited	Unlimited	\$0.45	Included	-	Unlimited

[Terms & Agreements](#)

Individual nationwide 3G unlimited talk

Monthly Fee	Daytime Minutes	Evening & Weekend Minutes	Roaming Minutes	Long Distance	Overage Minutes	Mobile-to-Mobile
\$59.99	Unlimited	Unlimited	\$0.45	Included	-	Unlimited

[Terms & Agreements](#)

Individual nationwide no roaming plans

- No long distance charges
- No roaming charges
- Night & Weekend minutes starting at 7pm
- Select Plans include My World calling circle of 2,5,10, or 20 numbers
- Overage Minutes are \$0.45 per minute

Monthly Fee	Daytime Minutes	Evening & Weekend Minutes	Roaming Minutes	Long Distance	Overage Minutes	Mobile-to-Mobile
\$29.99	300	Unlimited	Included	Included	\$0.45	Unlimited
\$39.99	600	Unlimited	Included	Included	\$0.45	Unlimited
\$59.99	1000	Unlimited	Included	Included	\$0.45	Unlimited
\$79.99	1600	Unlimited	Included	Included	\$0.45	Unlimited
\$99.99	2200	Unlimited	Included	Included	\$0.45	Unlimited



TO ORDER BY PHONE, CALL
1-800-583-4957

BEST OFFER EVER ON VONAGE WORLDSM

Get unlimited local and long distance, FREE calling to more than 60 countries* and other great features like readable voicemail. When you add it all up, nothing else stacks up.

*See country list and important details

PLANS

HOW IT WORKS

FEATURES

FAQ

COMPARE

SIGN UP

VONAGE WORLD

- Unlimited calling to the U.S., Canada, India, Mexico and more than [60 other countries](#)
- Unlimited readable voicemail transcriptions sent, via text and email with Vonage Visual Voicemail*
- Caller ID, Call Waiting, Anonymous Call Block, 3-Way Calling & tons of other [standard features](#)
- Enhanced 411 directory assistance included
- Keep your existing number**

\$25.99/MO[†]

SIGN UP NOW

with 1-year agreement plus fees & taxes

30-Day Money Back Guarantee

First Month Service FREE

VONAGE LITE

- 200 minutes of outbound calling across the U.S., Canada, and Puerto Rico and only 5c per additional minute
- Unlimited incoming and Vonage to Vonage calls
- Caller ID, Call Waiting, Anonymous Call Block, 3-Way-Calling & tons of other [standard features](#)
- Keep your existing number**

\$9.99/MO[†]

SIGN UP NOW

with 1-year agreement plus fees & taxes

30-Day Money Back Guarantee

Online Only Offer

All you need:
Any home phone, a Vonage adapter and high-speed Internet

[learn more](#)

Looking for a different solution? See all [RESIDENTIAL PLANS](#) >



[ACCOUNT LOG-IN](#)

User name

Password

GO

HOME	RATE PLANS	AVAILABILITY	FEATURES	SUPPORT	SIGN UP			
Unlimited In-State	Unlimited USA	Unlimited USA PLUS	Unlimited World	Unlimited World PLUS	Unlimited Business	Video Phone	Bring Your Own Device	International Rates

RATE PLANS

UNLIMITED* IN-STATE \$ 9⁹⁵ Unlimited* calling anywhere within the state of your choice. Learn more >	UNLIMITED* USA \$ 17⁹⁵ Unlimited* calling anywhere in the US. Learn more >	UNLIMITED* USA PLUS \$ 18⁹⁵ Unlimited* calling anywhere in the US, Canada and Puerto Rico. Learn more >	UNLIMITED* WORLD \$ 19⁹⁵ Unlimited* calling to 29 countries including the US and Canada. Learn more >	UNLIMITED* WORLD PLUS \$ 24⁹⁵ Unlimited* calling to 56 countries including the US and Canada. Learn more >	UNLIMITED* BUSINESS \$ 29⁹⁵ Full featured business solution with Unlimited* calling to the US and Canada. Learn more >	VIDEO PHONE \$ 34⁹⁵ Internet Video Phone Service. The ultimate Premium Video Phone Solution. Learn more >
---	---	--	--	---	---	--

BroadVoice simplifies your life by offering easy to understand flat rate plans. All you have to do is choose one that best fits YOUR needs. You can always change your plan at any time if your call needs change. All plans include a [money-back guarantee](#).

Bring Your Own Device and save even more!

For even greater savings, BroadVoice created the [BYOD Plan](#). This service allows users with all types of phone adapters to enjoy the quality of BroadVoice service without buying a new adapter. All BroadVoice plans are available on a BYOD (Bring Your Own Device) basis.

Superior International Rates

BroadVoice offers very [low international rates](#) to almost every country in the world. Additionally, if you choose the [Unlimited* World](#) or [Unlimited* World Plus](#) Plans, **up to 57 countries** are included in your plan at no additional charge.*

[Learn more about our International Rates and review our pricing around the world.](#)



[SIGN-UP!](#)



[Home](#) [Support](#) [My Account Login](#)

[Home](#) > [Home Plans](#)

Unlimited calls to over 45 countries**

\$9.95 PER MONTH FOR THE FIRST 3 MONTHS

\$21.95/MO THEREAFTER

[ORDER NOW](#)

Residential Business Features & Benefits Rates How It Works

NEW

UNLIMITED
Calling to Over
45 Countries
from your Cell
Phone

Residential Calling Plans

We have plans that fit everyone's needs.

Make calls with your existing high-speed Internet connection with the plan that fits you best. Lots of great features included at no extra charge.

Plans

Lingo Smart Talk

Unlimited calls to 45 Countries**
Including India, China, and more...

[Learn More](#)

Hello America Unlimited

Unlimited calls across the U.S.
& to Canada

Promo Price Promotion

\$9.95*
/mo.
for the
first 3 months
\$21.95 thereafter

**Activation +
Shipping +
Equipment waived
(\$94.90 value)**

[Order](#)

**Activation +
Shipping +
Equipment waived
(\$94.90 value)**



Click here

[Learn More](#)

Hello America 500

FREE 500 Minutes across the U.S. & to Canada

[Learn More](#)

Hello America 250

FREE 250 Minutes across the U.S. & to Canada

[Learn More](#)

\$9.95*
/mo.
for the first 3 months
\$19.95 thereafter

[Order](#)

\$14.95
/mo.

Activation + Shipping + Equipment waived (\$94.90 value)

[Order](#)

\$7.95
/mo.

Activation + Shipping + Equipment waived (\$94.90 value)

[Order](#)

The customer may change their subscription plan to any available option at any time. Any change or cancellation fees may apply.

Requirements:

- ▶ 1-year agreement
- ▶ High-speed internet (Cable or DSL)
- ▶ U.S. or Puerto Rico shipping address (no P.O. boxes)

Optional Charges:

- ▶ \$4.95 per month for additional U.S. phone numbers
- ▶ \$1.49 per Directory assistance call
- ▶ \$5.00 per month for Canadian phone numbers
- ▶ \$10.00 per month for International phone numbers
- ▶ \$9.95 per month for Lingo Unwired (free for the first month)

**Unlimited calling is subject to normal residential usage for residential plans and normal business usage for business plans. See Lingo's terms and conditions for details. Calls to mobile, premium, and special service numbers are not included in the unlimited international destinations except for China, Hong Kong, and India.

[Share](#)



Buy Now 

\$249.99 Risk-free trial with 30-day return

Free Shipping Limited time offer

*Pay only applicable taxes and fees. Unlimited calls are subject to normal residential usage limitations. [Click here for more details.](#)

Ooma lets you make free U.S. calls over the Internet with your existing home phone. The award-winning Ooma system offers 911 service, free U.S. calls, voicemail, caller-ID, call-waiting and low cost international rates with outstanding voice quality.



Save over \$930 with Ooma in 2 years.

.00

Enter your typical monthly bill



Hear the difference! PureVoice™ delivers clear calls.



Listen to Ooma with PureVoice™



Listen to Other VoIP service

Sound samples recorded under congested network conditions with 30% packet loss. Ooma PureVoice available exclusively for the Ooma Telo.

What they're saying.

amazon.com



★★★★★
Great service, easy to use, and clear calls.



[Blog](#) [Company](#) [Careers](#) [News & Media](#) [Events](#) [Awards](#) [Contact](#) [Legal](#) [Site Map](#)

Follow Ooma on: [Twitter](#) [Facebook](#)

Do you have questions? Call us, free of course, at 1-866-452-6662 Monday-Friday 8am-5pm PST, Saturday-Sunday closed.
Copyright © 2007-2010 Ooma, Inc. All rights reserved.

Ooma's free home phone service does not include high-speed Internet or broadband service. Federal universal service charges, state and local taxes, fees & surcharges and regulatory and compliance fees are billed monthly and are subject to change. To determine the specific charges in your area, go to <http://www.ooma.com/rates>.

Transfer of your existing phone number, where available, requires a one-time processing fee. Ooma Premier and other enhanced features carry a monthly service fee and may require additional peripheral devices sold separately.

Unlimited U.S. calls are subject to normal residential usage limitations. See <http://www.ooma.com/termsandconditions> for current usage limitations. International calls are billed per minute and must be prepaid. Directory assistance (411) calls are billed per call. See <http://www.ooma.com/rates>.

Ooma E911 service operates differently from non-Internet 911 service. See <http://www.ooma.com/911> for details. Some alarms, faxes and other devices may not be compatible. Additional terms apply, see <http://www.ooma.com/termsandconditions>.

** Savings may vary based upon applicable taxes and fees.



Call phones anywhere in the world at great low rates.

15% discount on 12 month subscriptions applied at check out

Enter a country, select a subscription, then chat away without the worry

[Multiple countries](#) · [\\$ USD](#)

- [American Dollars](#)
- [Japanese Yen](#)
- [Polish złote](#)
- [Swedish kronor](#)
- [Hong Kong dollars](#)
- [Norwegian kroner](#)
- [Australian dollars](#)
- [Taiwanese Dollars](#)
- [Euros](#)
- [British Pounds](#)
- [Brazil reais](#)
- [Danish kroner](#)
- [Swiss francs](#)
- [Canadian dollars](#)
- [South Korean won](#)

Landlines and mobiles

Landlines

Unlimited US & Canada³

- Unlimited³
 - Includes:
 - United States (USA)
(incl. Guam, Puerto Rico)
 - Canada

Unlimited North America³

- Unlimited³
 - Includes:
 - United States (USA)
(incl. Guam, Puerto Rico)

- Canada
- Mexico (landlines in Guadalajara, Mexico City, Monterrey only)

Unlimited³

Unlimited World³

Includes:

- United States (USA)
(incl. Guam, Puerto Rico)
- Canada
- Mexico (landlines in Guadalajara, Mexico City, Monterrey only)
- Plus over [40 countries worldwide.](#)

2.99/month²

7.99/month²

13.99/month²

[Buy now](#)

[Buy now](#)

[Buy now](#)

Includes discounted rates to the rest of Mexico: 3¢/min to landlines, 15¢/min to mobiles (3.45¢ / 17.25¢ incl. VAT)

Includes discounted rates to the rest of Mexico: 3¢/min to landlines, 15¢/min to mobiles (3.45¢ / 17.25¢ incl. VAT)

Pay As You Go instead?

[Buy Skype Credit](#) and pay as you call at our standard rates.

Landlines and mobiles from

2.1¢ /minute¹

GENERAL CUSTOMER SERVICES TARIFF

VERIZON SOUTH INC.
VIRGINIA

ISSUED: August 13, 2010
BY: President
Richmond, Virginia

Section 3
Fourteenth Revised Page 4
Cancels Thirteenth Revised Page 4
EFFECTIVE: September 27, 2010

S3. BASIC LOCAL EXCHANGE SERVICE

S3.2 Flat Rate Service (Continued)

S3.2.2 Exchange Classification and Rate Groups (Continued)

e. Rate Groups

	Rate Group 1	Rate Group 2	Rate Group 3	Rate Group 4	Rate Group 5
Individual Access Line					
Residence (R1/74864)	\$ 11.38	\$ 11.89	\$12.73	\$13.64	\$14.65
Business (B1/11135)	18.85	21.50	21.50	26.10	28.70
Business 24-Month Term*	17.00	20.00	20.00	23.50	26.00
Automatic Access Line					
PBX Trunk	38.95	44.55	44.55	52.25	57.35
1-10 Lines (AALB/11823)					
24-Month Term*	35.00	40.00	40.00	47.00	52.00
11+ Lines (AALB11+/10280)	33.30	37.90	37.90	44.55	48.65
24-Month Term*	30.00	35.00	35.00	39.50	43.50

Rate Group 1	Rate Group 2	Rate Group 3	Rate Group 4	Rate Group 5
1-2,000	2,001-4,000	4,001-8,000	8,001-15,000	15,001-30,000
			Alberta Doswell ^{A, B}	Big Prater Big Rock Boydton Callao ^B Charlotte Court House Chase City Clarksville Dahlgren ^{A, B} Drakes Branch Hurley Irvington Jarratt Maxie Reedville Warsaw ^A (C)

Note A: Residential basic telephone services under the exchanges (in bold print) are Competitive and priced as indicated under Tariff 220.

Note B: Business basic telephone services under the exchanges (in bold print) are Competitive and priced as indicated under Tariff 220.

* Termination Liability language is specified in Section S3.4.4.1 of this Tariff.

GENERAL CUSTOMER SERVICES TARIFF

VERIZON SOUTH INC.
VIRGINIA

Section 3
Twenty-First Revised Page 5
Cancels Twentieth Revised Page 5
EFFECTIVE: September 27, 2010

ISSUED: August 13, 2010
BY: President
Richmond, Virginia

S3. BASIC LOCAL EXCHANGE SERVICE

S3.2 Flat Rate Service (Continued)

S3.2.2 Exchange Classification and Rate Groups (Continued)

e. Rate Groups (Continued)

	Rate Group 6	Rate Group 7	Rate Group 8	Rate Group 9	Rate Group 10
Individual Access Line					
Residence (R1/74864)	\$15.59	\$16.71	\$16.87	\$16.87	\$16.87
Business (B1/11135)	30.75	33.75	35.85	37.90	37.90
Business 24-Month Term**	28.00	31.00	33.00	35.00	35.00
Automatic Access Line					
PBX Trunk	62.00	66.60	71.75	76.35	76.35
1-10 Lines (AALB/11823)					
24-Month Term**	56.50	61.00	66.00	70.50	70.50
11+ Lines (AALB11+/10280)	52.75	56.85	60.95	65.00	65.00
24-Month Term**	47.50	51.50	55.50	59.50	59.50

Rate Group 6 30,001-50,000	Rate Group 7 50,001-100,000	Rate Group 8 100,001-300,000	Rate Group 9 300,001-1,000,000	Rate Group 10 1,000,001-Over
Barnesville Bluefield^A (C)	Boykins Capron Courtland Edom Emporia^B Farnham Harrisonburg^{A, B} Ivor ^B Keezletown^{A, B} Keysville King William Ladysmith^B Lively Mathews Oakwood Richlands^A (C) Rocky Gap Tazewell Wakefield	Amherst^B Appomattox^B Bridgewater^{A, B} Broadway^{A, B} (C) Dawn Dayton^{A, B} Deltaville Disputanta Elkton^{A, B} Eppes Fork Grottoes^{A, B} (C) Hinton Jewell Ridge King & Queen McGaheysville^{A, B} Raphine^B Saluda Tappahannock^B Weyers Cave^{A, B}	Allwood Bowling Green Chancellor^{A, B} (C) Claremont Colonial Beach Gladstone Hayes^{A, B} King George^B Pamplin Port Royal^B Stony Creek	Arcola^{A, B} Chuckatuck^A (C) Crittenden^{A, B} Dale City^{A, B} Dulles^{A, B} Dulles Metro^{A, B} Franklin^B Gloucester^A Great Bridge^{A, B} Hanover Haymarket^{A, B} Hickory^{A, B} Holland Independent Hill^{A, B} Lorton^{A, B} Lorton Metro^{A, B} Manassas^{A, B} Nokesville^{A, B} Occoquan^{A, B} Old Church^A Princess Anne^{A, B} Smithfield^{A, B} (C) Stafford^{A, B} Surry Triangle^{A, B} Windsor^{A, B} (C)

*Refer to 3.2.3

Note A: Residential basic telephone services under the exchanges (in bold print) are Competitive and priced as indicated under Tariff 220.

Note B: Business basic telephone services under the exchanges (in bold print) are Competitive and priced as indicated under Tariff 220.

** Termination Liability language is specified in Section S3.4.4.1 of this Tariff.

GENERAL CUSTOMER SERVICES TARIFF

VERIZON SOUTH INC.
VIRGINIA

Section 3
Eighteenth Revised Page 6
Cancels Seventeenth Revised Page 6
EFFECTIVE: September 27, 2010

ISSUED: August 13, 2010
BY: President
Richmond, Virginia

S3. BASIC LOCAL EXCHANGE SERVICE

S3.2 Flat Rate Service (Continued)

S3.2.3 Rates

- a. The rates shown below are billed monthly in advance. A customer's billing cycle, regardless of the number of days in the month, is considered to be thirty (30) days.
- b. The Automatic Access Line 1-10 Lines rate applies to the first ten (1st 10) lines and the 11+ Lines rate applies to the eleventh and over lines, i.e., if a customer has 18 PBX lines, the 1-10 Lines rate applies to the first ten lines and the 11+ Lines rate applies to the eleventh through the eighteenth lines.
- c. See Section S2.6 for rules and regulations pertaining to the movement of exchanges to a different Rate Group.

GSEC/IOSC:	Rate Group	Individual Access Line		Automatic Access Line (PBX Trunk)	
		Residence R1/74864	Business ³ B1/11135	1-10 Lines ³ AALB/11823	11+ Lines ³ AALB11+/10280
Alberta	4	\$ 13.64	\$ 26.10	\$ 52.25	\$ 44.55
Allwood	9	16.87	37.90	76.35	65.00
Amherst^B (includes Sweet Briar)	8	16.87	35.85	71.75	60.95
Appomattox^B	8	16.87	35.85	71.75	60.95
Arcola^{A,B} ELS Adder ¹	10	16.87 +0.55 <u>17.42</u>	37.90 +1.22 <u>39.12</u>	76.35 +2.47 <u>78.82</u>	65.00 +2.10 <u>67.10</u>
Barnesville	6	15.59	30.75	62.00	52.75
Big Prater ELS Adder ²	5	14.65 +0.02 <u>14.67</u>	28.70 +0.04 <u>28.74</u>	57.35 +0.04 <u>57.39</u>	48.65 +0.04 <u>48.69</u>
Big Rock	5	14.65	28.70	57.35	48.65
Bluefield^A	6	15.59	30.75	62.00	52.75
Bowling Green	9	16.87	37.90	76.35	65.00
Boydton	5	14.65	28.70	57.35	48.65
Boykins	7	16.71	33.75	66.60	56.85
Bridgewater^{A,B}	8	16.87	35.85	71.75	60.95
Broadway^{A,B}	8	16.87	35.85	71.75	60.95

Note¹ Arcola Extended Local Service (ELS) adder provides for unlimited calling to Washington, D.C.

Note² Big Prater Extended Local Service (ELS) adder provides for unlimited calling to Jewell Ridge.

Note³ Term Rates can be located on Pages 4 & 5.

Note ^A: Residential basic telephone services under the exchanges (in bold print) are Competitive and priced as indicated under Tariff 220.

Note ^B: Business basic telephone services under the exchanges (in bold print) are Competitive and priced as indicated under Tariff 220.

GENERAL CUSTOMER SERVICES TARIFF

VERIZON SOUTH INC.
VIRGINIA

Section 3
Sixteenth Revised Page 7
Cancels Fifteenth Revised Page 7
EFFECTIVE: September 27, 2010

ISSUED: August 13, 2010
BY: President
Richmond, Virginia

S3. BASIC LOCAL EXCHANGE SERVICE

S3.2 Flat Rate Service (Continued)

S3.2.3 Rates (Continued)

GSEC/OSC:	Rate Group	Individual Access Line		Automatic Access Line (PBX Trunk)		
		Residence R1774864	Business ³ B1/11135	1-10 Lines ³ AALB/11823	11+ Lines ³ AALB11+/10280	
Callao ^B	5	\$ 14.65	\$ 28.70	\$ 57.35	\$ 48.65	
Capron	7	16.17	33.75	66.60	56.85	
Chancellor ^{A,B}	9	16.87	37.90	76.35	65.00	(C)
Charlotte Court House	5	14.65	28.70	57.35	48.65	
Chase City	5	14.65	28.70	57.35	48.65	
Chuckatuck ^A	10	16.87	37.90	76.35	65.00	(C)
Claremont	9	16.87	37.90	76.35	65.00	
Clarksville	5	14.65	28.70	57.35	48.65	
Colonial Beach	9	16.87	37.90	76.35	65.00	
Courtland	7	16.71	33.75	66.60	56.85	
Crittenden ^{A,B}	10	16.87	37.90	76.35	65.00	
Dahlgren ^{A,B}	5	14.65	28.70	57.35	48.65	
Dale City ^{A,B} (includes Hoadly)	10	16.87	37.90	76.35	65.00	
Dawn	8	16.87	35.85	71.75	60.95	
Dayton ^{A,B}	8	16.87	35.85	71.75	60.95	
Deltaville	8	16.87	35.85	71.75	60.95	
Dendron	6	15.59	30.75	62.00	52.75	
Disputanta ELS Adder ²	8	16.87 .13 <u>17.00</u>	35.85 .30 <u>36.15</u>	71.75 .60 <u>72.35</u>	60.95 .51 <u>61.46</u>	
Doswell ^{A,B}	4	13.64	26.10	52.25	44.55	
Drakes Branch	5	14.65	28.70	57.35	48.65	
Dulles ^{1,A,B}	10	16.87	37.90	76.35	65.00	

Note 1: Dulles customers can choose Flat Rate Service or Message Rate Service. Refer to Section S3.5.2 for Message Rate Service options.

Note 2: Disputanta Extended Local Service (ELS) Adder provides for unlimited calling to Verizon Virginia's Dinwiddie Exchange.

Note 3: Term Rates can be located on Pages 4 & 5.

Note A: Residential basic telephone services under the exchanges (in bold print) are Competitive and priced as indicated under Tariff 220.

Note B: Business basic telephone services under the exchanges (in bold print) are Competitive and priced as indicated under Tariff 220.

GENERAL CUSTOMER SERVICES TARIFF

VERIZON SOUTH INC.
VIRGINIA

Section 3
Eighteenth Revised Page 8
Cancels Seventeenth Revised Page 8
EFFECTIVE: September 27, 2010

ISSUED: August 13, 2010
BY: President
Richmond, Virginia

S3. BASIC LOCAL EXCHANGE SERVICE

S3.2 Flat Rate Service (Continued)

S3.2.3 Rates (Continued)

GSEC/IOSC:	Rate Group	Individual Access Line		Automatic Access Line (PBX Trunk)	
		Residence R1/74864	Business ¹ B1/11135	1-10 Lines ¹ AALB/11823	11+ Lines ¹ AALB11+/10280
Edom	7	\$ 16.71	\$ 33.75	\$ 66.60	\$ 56.85
Elkton ^{A,B}	8	16.87	35.85	71.75	60.95
Emporia ^B	7	16.71	33.75	66.60	56.85
Eppes Fork	8	16.87	35.85	71.75	60.95
Farnham	7	16.71	33.75	66.60	56.85
Franklin ^B	10	16.87	37.90	76.35	65.00
Gladstone	9	16.87	37.90	76.35	65.00
Gloucester ^A	10	16.87	37.90	76.35	65.00
Great Bridge ^{A,B} (includes Battlefield)	10	16.87	37.90	76.35	65.00
Grottoes ^{A,B}	8	16.87	35.85	71.75	60.95
Grundy	6	15.59	30.75	62.00	52.75
Hague	6	15.59	30.75	62.00	52.75
Hanover	10	16.87	37.90	76.35	65.00
Harrisonburg ^{A,B}	7	16.71	33.75	66.60	56.85
Hayes ^{A,B}	9	16.87	37.90	76.35	65.00
Haymarket ^{A,B}	10	16.87	37.90	76.35	65.00
Heathsville ^B	6	15.59	30.75	62.00	52.75
Hickory ^{A,B}	10	16.87	37.90	76.35	65.00

(C)

Note ^A: Residential basic telephone services under the exchanges (in bold print) are Competitive and priced as indicated under Tariff 220.
 Note ^B: Business basic telephone services under the exchanges (in bold print) are Competitive and priced as indicated under Tariff 220.
 Note 1: Term Rates can be located on Pages 4 & 5.

GENERAL CUSTOMER SERVICES TARIFF

VERIZON SOUTH INC.
VIRGINIA

Section 3
Seventeenth Revised Page 10
Cancels Sixteenth Revised Page 10
EFFECTIVE: September 27, 2010

ISSUED: August 13, 2010
BY: President
Richmond, Virginia

S3. BASIC LOCAL EXCHANGE SERVICE

S3.2 Flat Rate Service (Continued)

S3.2.3 Rates (Continued)

GSEC/IOSC:	Rate Group	Individual Access Automatic Access Line				
		Line		(PBX Trunk)		
		Residence R1/74864	Business ³ B1/11135	1-10 Lines ³ AALB11823	11+ Lines ³ AALB11+/10280	
Raphine^B	8	\$ 16.87	\$ 35.85	\$ 71.75	\$ 60.95	
Reedville	5	14.65	28.70	57.35	48.65	
Richlands^A ELS Adder ¹	7	16.71 <u>+ .02</u> 16.73	33.75 <u>+ .03</u> 33.78	66.60 <u>.03</u> 66.63	56.85 <u>+ .03</u> 56.88	(C)
Rocky Gap ELS Adder ²	7	16.71 <u>+2.40</u> 19.11	33.75 <u>+4.83</u> 38.58	66.60 <u>+9.81</u> 76.41	56.85 <u>+8.32</u> 65.17	
Saluda	8	16.87	35.85	71.75	60.95	
Smithfield^{A,B}	10	16.87	37.90	76.35	65.00	(C)
South Brunswick	6	15.59	30.75	62.00	52.75	
Stafford^{A,B}	10	16.87	37.90	76.35	65.00	
Stony Creek	9	16.87	37.90	76.35	65.00	
Surry	10	16.87	37.90	76.35	65.00	
Tappahannock^B	8	16.87	35.85	71.75	60.95	
Tazewell	7	16.71	33.75	66.60	56.85	
Triangle^{A,B} (includes Quantico)	10	16.87	37.90	76.35	65.00	
Wakefield	7	16.71	33.75	66.60	56.85	
Warsaw^A	5	14.65	28.70	57.35	48.65	(C)
Weyers Cave^{A,B}	8	16.87	35.85	71.75	60.95	
Windsor^{A,B}	10	16.87	37.90	76.35	65.00	(C)

Note 1: Richlands Extended Local Service (ELS) Adder provides for unlimited calling to Verizon Virginia's Haysi Exchange.

Note 2: Rocky Gap Extended Local Service (ELS) Adder provides for unlimited calling to Embarq's Bland Exchange.

Note 3: Term Rates can be located on Pages 4 & 5.

Note A: Residential basic telephone services under the exchanges (in bold print) are Competitive and priced as indicated under Tariff 220.

Note B: Business basic telephone services under the exchanges (in bold print) are Competitive and priced as indicated under Tariff 220.

GENERAL CUSTOMER SERVICES TARIFF

VERIZON SOUTH INC.
VIRGINIA

Section 3
Fourteenth Revised Page 32
Cancels Thirteenth Revised Page 32
EFFECTIVE: September 27, 2010

ISSUED: August 13, 2010
BY: President
Richmond, Virginia

S3. BASIC LOCAL EXCHANGE SERVICE

S3.4 Optional Usage Sensitive Service (USS) (Continued)

S3.4.5 Usage Sensitive Service Rates

- a. Access Line Rates a monthly charge for the provision of incoming calls and access to the local network.

Refer to Section S2.6 for rules and regulations pertaining to the movement of exchanges to a different Rate Group.

	Rate Group 1	Rate Group 2	Rate Group 3	Rate Group 4	Rate Group 5
Individual Access Line Residence (R1USS/11944)	\$6.13	\$ 6.39	\$ 6.81	\$ 7.26	\$7.78
Business (B1USS/11917)	11.25	13.00	14.75	16.25	17.75
Business 24-Month Term*	9.50	10.75	12.50	14.00	15.50
Exchange Only Residence (M1X/75520)	10.32	10.77	11.53	12.37	13.27
Automatic Access Line (AALBUSS/75521)	27.15	30.75	33.75	37.40	41.00
24-Month Term*	23.50	27.00	30.00	33.50	37.00
Customer Owned Coin (PTAL/11939)	8.89	9.93	10.94	11.98	12.99

Rate Group 1	Rate Group 2	Rate Group 3	Rate Group 4	Rate Group 5
1-2,000	2,001-4,000	4,001-8,000	8,001-15,000	15,001-30,000
			Alberta Doswell ^{A, B}	Big Prater Big Rock Boydton Callao ^B Charlotte Court House Chase City Clarksville Dahlgren ^{A, B} Drakes Branch Hurley Irvington Jarratt Maxie Reedville Warsaw ^A (C)

* Termination Liability language is specified in Section S3.4.4.1 of this Tariff.

Note A: Residential basic telephone services under the exchanges (in bold print) are Competitive and priced as indicated under Tariff 220.

Note B: Business basic telephone services under the exchanges (in bold print) are Competitive and priced as indicated under Tariff 220.

GENERAL CUSTOMER SERVICES TARIFF

VERIZON SOUTH INC.
VIRGINIA

Section 3
Twenty-First Revised Page 33
Cancels Twentieth Revised Page 33
EFFECTIVE: September 27, 2010

ISSUED: August 13, 2010
BY: President
Richmond, Virginia

S3. BASIC LOCAL EXCHANGE SERVICE

S3.4 Optional Usage Sensitive Service (USS) (Continued)

S3.4.5 Usage Sensitive Service Rates (Continued)

a. Access Line Rates (Continued)

	Rate Group 6	Rate Group 7	Rate Group 8	Rate Group 9	Rate Group 10
Individual Access Line Residence (R1USS/11944)	\$8.20	\$ 8.74	\$ 8.74	\$ 8.74	\$ 8.74
Business (B1USS/11917)	19.45	21.00	23.00	24.50	24.50
Business 24-Month Term**	17.00	18.50	20.50	22.50	22.50
Exchange Only Residence (M1X/75520)	14.13	15.11	15.25	15.25	15.25
Automatic Access Line (AALBUSS/75521)	44.55	48.15	51.25	53.25	53.25
24-Month Term**	40.50	44.00	47.00	49.00	49.00
Customer Owned Coin (PTAL/11939)	13.98	15.03	16.03	17.08	18.09

Rate Group 6 30,001-50,000	Rate Group 7 50,001-100,000	Rate Group 8 100,001-300,000	Rate Group 9 300,001-1,000,000	Rate Group 10 1,000,001-Over
Barnesville Bluefield ^A (C) Dendron Dwight Grundy Hague Heathsville ^B Kilmarnock Lawrenceville Montross ^B Pocahontas South Brunswick	Boykins Capron Courtland Edom Emporia ^B Farnham Harrisonburg ^{A, B} Ivor ^B Keezletown ^{A, B} Keysville King William Ladysmith ^B Lively Mathews Oakwood Richlands ^A (C) Rocky Gap Tazewell Wakefield	Amherst ^B Appomattox ^B Bridgewater ^{A, B} Broadway ^{A, B} (C) Dawn Dayton ^{A, B} Deltaville Disputanta Elkton ^{A, B} Eppes Fork Grottoes ^{A, B} (C) Hinton Jewell Ridge King & Queen McGaheysville ^{A, B} Raphine ^B Saluda Tappahannock ^B Weyers Cave ^{A, B}	Allwood Bowling Green Chancellor ^{A, B} (C) Claremont Colonial Beach Gladstone Hayes ^{A, B} King George ^B Pamplin Port Royal ^B Stony Creek	Arcola ^{*A, B} Chuckatuck ^A (C) Crittenden ^{A, B} Dale City ^{A, B} Dulles ^{A, B} Dulles Metro ^{A, B} Franklin ^B Gloucester ^A Great Bridge ^{A, B} Hanover Haymarket ^{A, B} Hickory ^{A, B} Holland Independent Hill ^{A, B} Lorton ^{A, B} Lorton Metro ^{A, B} Manassas ^{A, B} Nokesville ^{A, B} Occoquan ^{A, B} Old Church ^A Princess Anne ^{A, B} Smithfield ^{A, B} (C) Stafford ^{A, B} Surry Triangle ^{A, B} Windsor ^{A, B} (C)

* Refer to 3.4.5

** Termination Liability language is specified in Section S3.4.4.1 of this Tariff.

Note A: Residential basic telephone services under the exchanges (in bold print) are Competitive and priced as indicated under Tariff 220.

Note B: Business basic telephone services under the exchanges (in bold print) are Competitive and priced as indicated under Tariff 220.

GENERAL CUSTOMER SERVICES TARIFF

VERIZON SOUTH INC.
VIRGINIA

Section 3
Sixteenth Revised Page 34
Cancels Fifteenth Revised Page 34
EFFECTIVE: September 27, 2010

ISSUED: August 13, 2010
BY: President
Richmond, Virginia

S3. BASIC LOCAL EXCHANGE SERVICE

S3.4 Optional Usage Sensitive Service (USS) (Continued)

S3.4.5 Usage Sensitive Service Rates (Continued)

a. Access Line Rates (Continued)

GSEC/ IOSC	Rate Group	Individual Access Line		Automatic Access Line (PBX Trunk) ² AALBUSS/ 75521	Exchange Only Residence MIX/75520	Customer Owned Coin PTAL/11939
		Residence	Business ²			
		R1USS/ 11944	1USS/ 11917			
Alberta	4	\$ 7.26	\$ 16.25	\$ 37.40	\$ 12.37	\$11.98
Allwood	9	8.74	24.50	53.25	15.25	17.08
Amherst^B (includes Sweet Briar)	8	8.74	23.00	51.25	15.25	16.03
Appomattox^B	8	8.74	23.00	51.25	15.25	16.03
Arcola^{A, B} ELS Adder ¹	10	8.74 +27 9.01	24.50 +73 25.23	53.25 +1.59 54.84	15.25 +46 15.71	18.09 +60 18.69
Barnesville	6	8.20	19.45	44.55	14.13	13.98
Big Prater	5	7.78	17.75	41.00	13.27	12.99
Big Rock	5	7.78	17.75	41.00	13.27	12.99
Bluefield^A	6	8.20	19.45	44.55	14.13	13.98
Bowling Green	9	8.74	24.50	53.25	15.25	17.08
Boydton	5	7.78	17.75	41.00	13.27	12.99
Boykins	7	8.74	21.00	48.15	15.11	15.03
Bridgewater^{A, B}	8	8.74	23.00	51.25	15.25	16.03
Broadway^{A, B}	8	8.74	23.00	51.25	15.25	16.03
Callao ^B	5	7.78	17.75	41.00	13.27	12.99
Capron	7	8.74	21.00	48.15	15.11	15.03
Chancellor^{A, B}	9	8.74	24.50	53.25	15.25	17.08
Charlotte Court House	5	7.78	17.75	41.00	13.27	12.99

Note¹ Arcola Extended Local Service (ELS) adder provides for measured calling to Washington, D.C.

Note² Term Rates can be located on Pages 32 & 33.

Note ^A: Residential basic telephone services under the exchanges (in bold print) are Competitive and priced as indicated under Tariff 220.

Note ^B: Business basic telephone services under the exchanges (in bold print) are Competitive and priced as indicated under Tariff 220.

GENERAL CUSTOMER SERVICES TARIFF

VERIZON SOUTH INC.
VIRGINIA

Section 3
Sixteenth Revised Page 35
Cancels Fifteenth Revised Page 35
EFFECTIVE: September 27, 2010

ISSUED: August 13, 2010
BY: President
Richmond, Virginia

S3. BASIC LOCAL EXCHANGE SERVICE

S3.4 Optional Usage Sensitive Service (USS) (Continued)

S3.4.5 Usage Sensitive Service Rates (Continued)

a. Access Line Rates (Continued)

GSEC/ IOSC	Rate Group	Individual Access Line		Automatic Access Line (PBX Trunk) ² AALBUSS/ 75521	Exchange Only	Customer Owned
		Residence R1USS/ 11944	Business ² 1USS/ 11917		Residence MIX/75520	Coin PTAL/11939
Chase City	5	\$ 7.78	\$ 17.75	\$ 41.00	\$ 13.27	\$ 12.99
Chuckatuck^A	10	8.74	24.50	53.25	15.25	18.09
Claremont	9	8.74	24.50	53.25	15.25	17.08
Clarksville	5	7.78	17.75	41.00	12.88	12.99
Colonial Beach	9	8.74	24.50	53.25	15.25	17.08
Courtland	7	8.74	21.00	48.15	14.66	15.03
Crittenden^{A, B}	10	8.74	24.50	53.25	15.25	18.09
Dahlgren^{A, B}	5	7.78	17.75	41.00	13.27	12.99
Dale City^{A, B} (includes Hoadly)	10	8.74	24.50	53.25	15.25	18.09
Dawn	8	8.74	23.00	51.25	15.25	16.03
Dayton^{A, B}	8	8.74	23.00	51.25	15.25	16.03
Deltaville	8	8.74	23.00	51.25	15.25	16.03
Dendron	6	8.20	19.45	44.55	14.13	13.98
Disputanta ELS Adder ¹	8	8.74 .07 <u>8.81</u>	23.00 .19 <u>23.19</u>	51.25 .42 <u>51.67</u>	15.25 .12 <u>15.37</u>	16.03 .16 <u>16.19</u>
Doswell^{A, B}	4	7.26	16.25	37.40	12.37	11.98
Drakes Branch	5	7.78	17.75	41.00	13.27	12.99
Dulles^{A, B}	10	(USS Not Applicable - Refer to Message Rate Service in Section S3.5)				
Dulles Metro^{A, B}	10	(USS Not Applicable - Refer to Message Rate Service in Section S3.5)				
Dwight	6	8.20	19.45	44.55	14.13	13.98
Edom	7	8.74	21.00	48.15	15.11	15.03
Elkton^{A, B}	8	8.74	23.00	51.25	15.25	16.03
Emporia^B	7	8.74	21.00	48.15	15.11	15.03
Eppes Fork	8	8.74	23.00	51.25	15.25	16.03
Farnham	7	8.74	21.00	48.15	15.11	15.03

Note 1: Disputanta Extended Local Service (ELS) Adder provides for unlimited calling to Verizon Virginia's Dinwiddie Exchange.

Note 2: Term Rates can be located on Pages 32 & 33.

Note ^A: Residential basic telephone services under the exchanges (in bold print) are Competitive and priced as indicated under Tariff 220.

Note ^B: Business basic telephone services under the exchanges (in bold print) are Competitive and priced as indicated under Tariff 220.

GENERAL CUSTOMER SERVICES TARIFF

VERIZON SOUTH INC.
VIRGINIA

ISSUED: August 13, 2010
BY: President
Richmond, Virginia

Section 3
Seventeenth Revised Page 36
Cancels Sixteenth Revised Page 36
EFFECTIVE: September 27, 2010

S3. BASIC LOCAL EXCHANGE SERVICE

S3.4 Optional Usage Sensitive Service (USS) (Continued)

S3.4.5 Usage Sensitive Service Rates (Continued)

a. Access Line Rates (Continued)

GSEC/ IOSC	Rate Group	Individual Access Line		Automatic Access Line (PBX Trunk) ¹ AALBUSS/ 75521	Exchange Only Residence MIX/75520	Customer Owned Coin PTAL/11939
		Residence	Business ¹			
		R1USS/ 11944	1USS/ 11917			
Franklin^B	10	\$ 8.74	\$24.50	\$53.25	\$15.25	\$18.09
Gladstone	9	8.74	24.50	53.25	15.25	17.08
Gloucester^A	10	8.74	24.50	53.25	15.25	18.09
Great Bridge^{A, B} (includes Battlefield)	10	8.74	24.50	53.25	15.25	18.09
Grottoes^{A, B}	8	8.74	23.00	51.25	15.25	16.03
Grundy	6	8.20	19.45	44.55	14.13	13.98
Hague	6	8.20	19.45	44.55	14.13	13.98
Hanover	10	8.74	24.50	53.25	15.25	18.09
Harrisonburg^{A, B}	7	8.74	21.00	48.15	15.11	15.03
Hayes^{A, B}	9	8.74	24.50	53.25	15.25	17.08
Haymarket^{A, B}	10	8.74	24.50	53.25	15.25	18.09
Heathsville^B	6	8.20	19.45	44.55	14.13	13.98
Hickory^{A, B}	10	8.74	24.50	53.25	15.25	18.09
Hinton	8	8.74	23.00	51.25	15.25	16.03
Holland	10	8.74	24.50	53.25	15.25	18.09
Hurley	5	7.78	17.75	41.00	13.27	12.99
Independent Hill^{A, B}	10	8.74	24.50	53.25	15.25	18.09
Irvington	5	7.78	17.75	41.00	13.27	12.99
Ivor^B	7	8.74	21.00	48.15	15.11	15.03
Jarratt	5	7.78	17.75	41.00	13.27	12.99
Jewell Ridge	8	8.74	23.00	51.25	15.25	16.03
Keezletown^{A, B}	7	8.74	21.00	48.15	15.11	15.03

Note ^A Residential basic telephone services under the exchanges (in bold print) are Competitive and priced as indicated under Tariff 220.
 Note ^B Business basic telephone services under the exchanges (in bold print) are Competitive and priced as indicated under Tariff 220.
 Note ¹ Term Rates can be located on Pages 32 & 33.

GENERAL CUSTOMER SERVICES TARIFF

VERIZON SOUTH INC.
VIRGINIA

Section 3
Seventeenth Revised Page 38
Cancels Sixteenth Revised Page 38
EFFECTIVE: September 27, 2010

ISSUED: August 13, 2010
BY: President
Richmond, Virginia

S3. BASIC LOCAL EXCHANGE SERVICE

S3.4 Optional Usage Sensitive Service (USS) (Continued)

S3.4.5 Usage Sensitive Service Rates (Continued)

a. Access Line Rates (Continued)

GSEC/ IOSC	Rate Group	Individual Access Line		Automatic Access Line (PBX Trunk) ¹ AALBUSS/ 75521	Exchange Only Residence MIX/75520	Customer Owned Coin PTAL/11939	
		Residence R1USS/ 11944	Business ¹ B1USS/ 11917				
Raphine^B	8	\$ 8.74	\$ 23.00	\$ 51.25	\$15.25	\$16.03	
Reedville	5	7.78	17.75	41.00	13.27	12.99	
Richlands^A	7	8.74	21.00	48.15	15.11	15.03	(C)
ELS Adder		<u>+01</u>	<u>+01</u>	<u>+01</u>	<u>+01</u>	<u>+01</u>	
		8.75	21.01	48.16	15.12	15.04	
Rocky Gap	7	8.74	21.00	48.15	15.11	15.03	
ELS Adder ³		<u>+1.26</u>	<u>+3.07</u>	<u>+6.78</u>	<u>+2.17</u>	<u>+2.59</u>	
		10.00	24.07	54.93	17.28	17.62	
Saluda	8	8.74	23.00	51.25	15.25	16.03	
Smithfield^{A, B}	10	8.74	24.50	53.25	15.25	18.09	(C)
South Brunswick	6	8.20	19.45	44.55	14.13	13.98	
Stafford^{A, B}	10	8.74	24.50	53.25	15.25	18.09	
Stony Creek	9	8.74	24.50	53.25	15.25	17.08	
Surry	10	8.74	24.50	53.25	15.25	18.09	
Tappahannock^B	8	8.74	23.00	51.25	15.25	16.03	
Tazewell	7	8.74	21.00	48.15	15.11	15.03	
Triangle^{A, B} (includes Quantico)	10	8.74	24.50	53.25	15.25	18.09	
Wakefield	7	8.74	21.00	48.15	15.11	15.03	
Warsaw^A	5	7.78	17.75	41.00	13.27	12.99	(C)
Weyers Cave^{A, B}	8	8.74	23.00	51.25	15.25	16.03	
Windsor^{A, B}	10	8.74	24.50	53.25	15.25	18.09	(C)

*** CROSS REFERENCE NOTES ***

1. The USS Business Individual Access Line rate also applies to:
Customer Owned Coin and Coinless Operated Telephone Service
as specified in Section S7.1.4. PTAL/11939
CentraNet Service – NARS – Refer to Section S12.1.2 CEN NARSM/52149
2. The USS Automatic Access Line (PBX Trunk) rate also applies to:
Shared Tenant Service - Refer to Section S24.1.3 STSAALBUSS
CentraNet Service – NARS – Refer to Section S12.1.2 CEN NARM/52120
3. Rocky Gap Extended Local Service (ELS) Adder provides for unlimited calling to Embarq's Bland Exchange.
- Note ^A: Residential basic telephone services under the exchanges (in bold print) are Competitive and priced as indicated under Tariff 220.
Note ^B: Business basic telephone services under the exchanges (in bold print) are Competitive and priced as indicated under Tariff 220.
Note ¹: Term Rates can be located on Pages 32 & 33.

GENERAL CUSTOMER SERVICES TARIFF

VERIZON SOUTH INC.
VIRGINIA

Section 3
Eleventh Revised Page 69
Cancels Tenth Revised Page 69
EFFECTIVE: September 27, 2010

ISSUED: August 13, 2010
BY: President
Richmond, Virginia

S3. BASIC LOCAL EXCHANGE SERVICE

S3.11 Verizon Local Calling Plan (Continued)

S3.11.3 Rates (Continued)

b. Rate Schedule (Continued)

(1) Residence Individual Access Line

	IOSC:	Basic Calling Plan	Community Plus Plan	Premium Plan	
		10679	21673	10669	
Alberta		\$ 9.82	\$ 15.94	\$ 36.04	
Allwood		11.04	17.47	-	
Amherst (includes Sweet Briar)		11.04	17.18	-	
Appomattox		9.82	17.18	-	
Arcola^A		-	-	-	
Barnesville		8.58	14.72	36.04	
Big Prater		7.96	14.72	36.04	
Big Rock		7.96	14.72	36.04	
Bluefield^A		8.58	15.94	36.04	(C)
Bowling Green		12.00	17.47	36.04	
Boydton		7.96	14.72	36.04	
Boykins		9.82	17.18	36.04	
Bridgewater^A		-	-	-	
Broadway^A		-	-	-	(C)
Callao^B		7.96	15.94	-	
Capron		8.58	17.18	-	
Chancellor^A		11.04	17.47	36.04	(C)
Charlotte Court House		7.96	14.72	36.04	
Chase City		7.96	14.72	36.04	
Chuckatuck^A		12.00	17.47	36.04	(C)
Claremont		11.04	17.47	36.04	
Clarksville		7.96	14.72	36.04	
Colonial Beach		11.04	17.47	36.04	

Note A: Residential basic telephone services under the exchanges (in bold print) are Competitive and priced as indicated under Tariff 220.

GENERAL CUSTOMER SERVICES TARIFF

VERIZON SOUTH INC.
VIRGINIA

Section 3
Fifteenth Revised Page 71
Cancels Fourteenth Revised Page 71
EFFECTIVE: September 27, 2010

ISSUED: August 13, 2010
BY: President
Richmond, Virginia

S3. BASIC LOCAL EXCHANGE SERVICE

S3.11 Verizon Local Calling Plan (Continued)

S3.11.3 Rates (Continued)

b. Rate Schedule (Continued)

(1) Residence Individual Access Line (Continued)

	IOSC:	Basic Calling Plan 10679	Community Plus Plan 21673	Premium Plan 10669	
Grottoes^A		-	-	-	(C)
Grundy		\$ 8.58	\$ 17.18	-	
Hague		7.96	15.94	-	
Hanover		12.00	17.47	36.04	
Harrisonburg^A		-	-	-	
Hayes^A		12.00	17.47	-	
Haymarket^A		-	-	-	
Heathsville		7.96	15.94	-	
Hickory^A		-	-	-	
Hinton		-	-	-	
Holland		12.00	17.47	-	
Hurley		7.96	14.72	36.04	
Independent Hill^A		-	-	-	
Irvington		7.96	14.72	36.04	
Ivor		12.00	17.47	36.04	
Jarratt		9.82	15.94	36.04	
Jewell Ridge		8.58	17.18	36.04	
Keezletown^A		-	-	-	
Keysville		8.58	15.94	36.04	
Kilmarnock		7.96	15.94	-	
King George		11.04	17.47	-	
King & Queen		12.00	17.47	36.04	
King William		12.00	17.47	36.04	

Note ^A: Residential basic telephone services under the exchanges (in bold print) are Competitive and priced as indicated under Tariff 220.

GENERAL CUSTOMER SERVICES TARIFF

VERIZON SOUTH INC.
VIRGINIA

Section 3
Fourteenth Revised Page 72
Cancels Thirteenth Revised Page 72
EFFECTIVE: September 27, 2010

ISSUED: August 13, 2010
BY: President
Richmond, Virginia

S3. BASIC LOCAL EXCHANGE SERVICE

S3.11 Verizon Local Calling Plan (Continued)

S3.11.3 Rates (Continued)

b. Rate Schedule (Continued)

(1) Residence Individual Access Line (Continued)

	IOSC:	Basic Calling <u>Plan</u> 10679	Community Plus <u>Plan</u> 21673	Premium <u>Plan</u> 10669
Ladysmith		\$ 12.00	\$ 17.47	\$ 36.04
Lawrenceville		9.82	17.18	36.04
Lively		8.58	15.94	-
Lorton^A		-	-	-
Lorton Metro^A		-	-	-
Manassas^A		-	-	-
Mathews		11.04	17.18	36.04
Maxie		7.96	14.72	36.04
McGaheysville^A		-	-	-
Montross		7.96	15.94	-
Nokesville^A		-	-	-
Oakwood		8.58	15.94	-
Occoquan (includes Woodbridge)		-	-	-
Old Church^A		12.00	17.47	36.04
Pamplin		11.04	17.47	36.04
Pocahontas		8.58	15.94	36.04
Port Royal^A		11.04	17.47	36.04
Princess Anne^A (includes Pungo and Shipps Corner)		-	-	-
Raphine^B		9.82	17.18	36.04
Reedville		7.96	14.72	36.04
Richlands^A		8.58	17.18	36.04
ELS Adder		<u>+01</u>	<u>+02</u>	<u>+02</u>
		8.59	17.20	36.06
Rocky Gap		8.58	15.94	34.96
ELS Adder ¹		<u>0</u>	<u>+2.46</u>	<u>0</u>
		8.58	18.40	36.04

(C)

Note 1 Rocky Gap Extended Local Service (ELS) Adder provides for unlimited calling to Embarq's Bland Exchange.

Note A: Residential basic telephone services under the exchanges (in bold print) are Competitive and priced as indicated under Tariff 220.

GENERAL CUSTOMER SERVICES TARIFF

VERIZON SOUTH INC.
VIRGINIA

Section 3
Thirteenth Revised Page 73
Cancels Twelfth Revised Page 73
EFFECTIVE: September 27, 2010

ISSUED: August 13, 2010
BY: President
Richmond, Virginia

S3. BASIC LOCAL EXCHANGE SERVICE

S3.11 Verizon Local Calling Plan (Continued)

S3.11.3 Rates (Continued)

- b. Rate Schedule (Continued)
(1) Residence Individual Access Line (Continued)

	IOSC:	Basic Calling Plan	Community Plus Plan	Premium Plan	
		10679	21673	10669	
Saluda		\$ 9.82	\$ 17.18	\$ -	
Smithfield^A		12.00	17.47	-	(C)
South Brunswick		7.96	15.94	36.04	
Stafford^A		-	-	-	
Stony Creek		11.04	17.47	36.04	
Surry		11.65	17.47	36.04	
Tappahannock		8.58	17.18	-	
Tazewell		8.58	17.18	-	
Triangle^A (includes Quantico)		-	-	-	
Wakefield		12.00	17.47	36.04	
Warsaw^A		8.58	15.94	36.04	(C)
Weyers Cave^A		-	-	-	
Windsor^A		12.00 (I)	17.47	-	(C)

Note ^A: Residential basic telephone services under the exchanges (in bold print) are Competitive and priced as indicated under Tariff 220.

COMPETITIVE PRICED LOCAL EXCHANGE SERVICES TARIFF - No. 220

VERIZON SOUTH INC.
VIRGINIA

ISSUED: August 13, 2010
BY: President
Richmond, Virginia

Section 1B
Sixth Revised Page 1
Cancels Fifth Revised Page 1
EFFECTIVE: September 27, 2010

EXCHANGE PRICES - RESIDENTIAL

Residential Dialtone Service Price (Per Month, usage indicated where applicable)

<u>Exchange</u>	<u>Flat Rate</u> <u>(Unlimited)</u>	<u>Usage Sensitive</u> <u>Service¹</u> <u>(US\$)</u>	<u>Exchange Only¹</u>	<u>Message Rate¹</u> <u>(50 Call</u> <u>Allowance)</u>	<u>Message Rate¹</u> <u>(No Call</u> <u>Allowance)</u>	
Arcola*	\$17.37	\$9.48	\$15.80	-	-	
Bluefield						(N)
Bridgewater*						
Broadway*						(N)
Chancellor*						
Chuckatuck*						(N)
Crittenden*						
Dahlgren*						
Dale City	\$17.37	\$9.48	\$15.80	-	-	
Dayton*						
Doswell*						
Dulles*						
Dulles Metro*						
Elkton*						
Gloucester	\$17.37	\$9.48	\$15.80	-	-	
Great Bridge	\$17.37	\$9.48	\$15.80	-	-	
Grottoes*						(N)
Harrisonburg						
Haymarket	\$17.37	\$9.48	\$15.80	-	-	
Hayes	\$17.37	\$9.48	\$15.80	-	-	
Hickory	\$17.37	\$9.48	\$15.80	-	-	
Independent Hill	\$17.37	\$9.48	\$15.80	-	-	
Keezletown*						
Lorton	\$17.37	\$9.48	\$15.80	\$11.90	\$8.74	
Lorton Metro	\$17.37	\$9.48	\$15.80	\$11.90	\$8.74	
Manassas	\$17.37	\$9.48	\$15.80	-	-	
McGaheysville*						
Nokesville	\$17.37	\$9.48	\$15.80	-	-	

Note 1: For Usage options and Charges see General Customer Services Tariff, Sections 3.4 and 3.5.

Note 2: Listed rates were previously found in General Customer Services Tariff, Sections 3.2, 3.4, and 3.5.

* For current rates, see General Customer Service Tariff, Sections 3.2 thru 3.5.

COMPETITIVE PRICED LOCAL EXCHANGE SERVICES TARIFF - No. 220

VERIZON SOUTH INC.
VIRGINIA

Section 1B
First Revised Page 1.1
Cancels Original Page 1.1
EFFECTIVE: September 27, 2010

ISSUED: August 13, 2010
BY: President
Richmond, Virginia

EXCHANGE PRICES - RESIDENTIAL

Residential Dialtone Service Price (Per Month, usage indicated where applicable)

<u>Exchange</u>	<u>Flat Rate</u> <u>(Unlimited)</u>	<u>Usage Sensitive</u> <u>Service¹</u> <u>(US\$)</u>	<u>Exchange Only¹</u>	<u>Message Rate¹</u> <u>(50 Call</u> <u>Allowance)</u>	<u>Message Rate¹</u> <u>(No Call</u> <u>Allowance)</u>
Occoquan	\$17.37	\$9.48	\$15.80	-	-
Old Church	\$17.37	\$9.48	\$15.80	-	-
Princess Anne	\$17.37	\$9.48	\$15.80	-	-
Richlands*					(N)
Smithfield*					(N)
Stafford	\$17.37	\$9.48	\$15.80	-	-
Triangle					
Warsaw*					(N)
Weyers Cave					
Windsor*					(N)

Note 1: For Usage options and Charges see General Customer Services Tariff, Sections 3.4 and 3.5.

Note 2: Listed rates were previously found in General Customer Services Tariff, Sections 3.2, 3.4, and 3.5.

* For current rates, see General Customer Service Tariff, Sections 3.2 thru 3.5.

VERIZON SOUTH INC.
VIRGINIA

Section 1D
Fourth Revised Page 1
Cancels Third Revised Page 1
EFFECTIVE: September 27, 2010

ISSUED: August 13, 2010
BY: President
Richmond, Virginia

OPTIONAL LOCAL CALLING PLAN PRICES - RESIDENTIAL

Residential Dialtone Service Price (Per Month)

Exchange	BASIC ¹	COMMUNITY PLUS ¹	PREMIUM	
	(For current rates in listed exchanges, see General Customer Services Tariff, Section 3.11)			
Arcola				
Bluefield				(N)
Bridgewater				
Broadway				(N)
Chancellor				
Chuckatuck				(N)
Crittenden				
Dahlgren				
Dale City				
Dayton				
Doswell				
Dulles				
Dulles Metro				
Elkton				
Gloucester				
Great Bridge				
Grottoes				(N)
Harrisonburg				
Haymarket				
Hayes				
Hickory				
Independent Hill				
Keezletown				
Lorton				
Lorton Metro				
Manassas				
McGaheysville				
Nokesville				
Occoquan				
Old Church				
Princess Anne				
Richlands				(N)
Smithfield				(N)
Stafford				
Triangle				
Warsaw				(N)
Weyers Cave				
Windsor				(N)

Note 1: For Usage options and Charges see General Customer Services Tariff, Section 3.11.