

Stephen C. Spencer
Director - Regulatory

STATE CORPORATION COMMISSION
RECEIVED

JUL 02 2010

DIVISION OF COMMUNICATIONS
RICHMOND, VA



703 E. Grace Street
Richmond, VA 23219

Phone 804 772-1585
Fax 804 772-3817
steve.spencer@verizon.com

July 2, 2010

Virginia State Corporation Commission
Communications Division
Mr. William Irby, Director
9th Floor, Tyler Building
1300 East Main Street
Richmond, Virginia 23219

Dear Mr. Irby:

Attached, in triplicate, for filing with your Honorable Commission are the following proposed Verizon South Inc. ("Verizon") tariffs pages to become effective August 16, 2010.

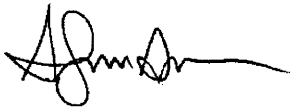
VERIZON SOUTH INC.
GENERAL CUSTOMER SERVICES TARIFF
Section 3, Twenty-First Revised Page 5
Sixteenth Revised Page 7
Eighteenth Revised Page 8
Sixteenth Revised Page 9
Seventeenth Revised Page 10
Twenty-First Revised Page 33
Sixteenth Revised Page 35
Seventeenth Revised Page 36
Fourteenth Revised Page 37
Seventeenth Revised Page 38
Eleventh Revised Page 69
Fifteenth Revised Page 70
Fifteenth Revised Page 71
Thirteenth Revised Page 73

VERIZON SOUTH INC.
COMPETITIVE PRICED LOCAL EXCHANGE SERVICES TARIFF, S.C.C.-Va.-No. 220
Section 1B, Sixth Revised Page 1
Section 1B, First Page 1.1
Section 1D, Fourth Revised Page 1

In this filing are the proposed tariff pages deregulating the price of residential BLETs service in the Colonial Beach, Franklin, King George and Tazewell exchanges. Supporting documents for each exchange are attached.

If you have any questions or require additional information regarding this filing, please contact me.

Yours truly,

A handwritten signature in black ink, appearing to be "Katie Cummings", with a long horizontal flourish extending to the right.

cc: Katie Cummings

Attachments

Competitiveness Test

Colonial Beach, Franklin, King George and Tazewell Exchanges

Step A

A minimum of 75% of the households in the telephone exchange area can choose telephone service from among at least two (2) competitors to Verizon

This test is met by the combined coverage of a number of wireless competitors, including AT&T Wireless, nTelos Wireless, Sprint, and T-Mobile, and by “Over the Top” VoIP providers including Vonage, Lingo, Broadvoice, Skype, ooma and others. According to FCC data, 2.4M Virginia households subscribe to broadband service*, representing 82% of the 2.9M households in Virginia. Within the above exchanges, broadband services are available to at least 75% of the households. (see Attachment A).

Step B

A minimum of two (2) of the competitors to Verizon in “Step A” must offer local telephone service that may be purchased by the household without a corresponding requirement to purchase non-telecommunications services (e.g., video or broadband internet service) from that competitor.

This test is met by the combined coverage of a number of wireless competitors, including AT&T Wireless, nTelos Wireless, Sprint, and T-Mobile, and by “Over the Top” VoIP providers including Vonage, Lingo, Broadvoice, Skype, ooma and others. According to FCC data, 2.4M Virginia households subscribe to broadband service*, representing 82% of the 2.9M households in Virginia. Within the above exchanges, broadband services are available to at least 75% of the households. (see Attachment A).

Step C

At least 50% of the households in the telephone exchange area can choose a facilities-based competitor that owns its own wireline network facilities

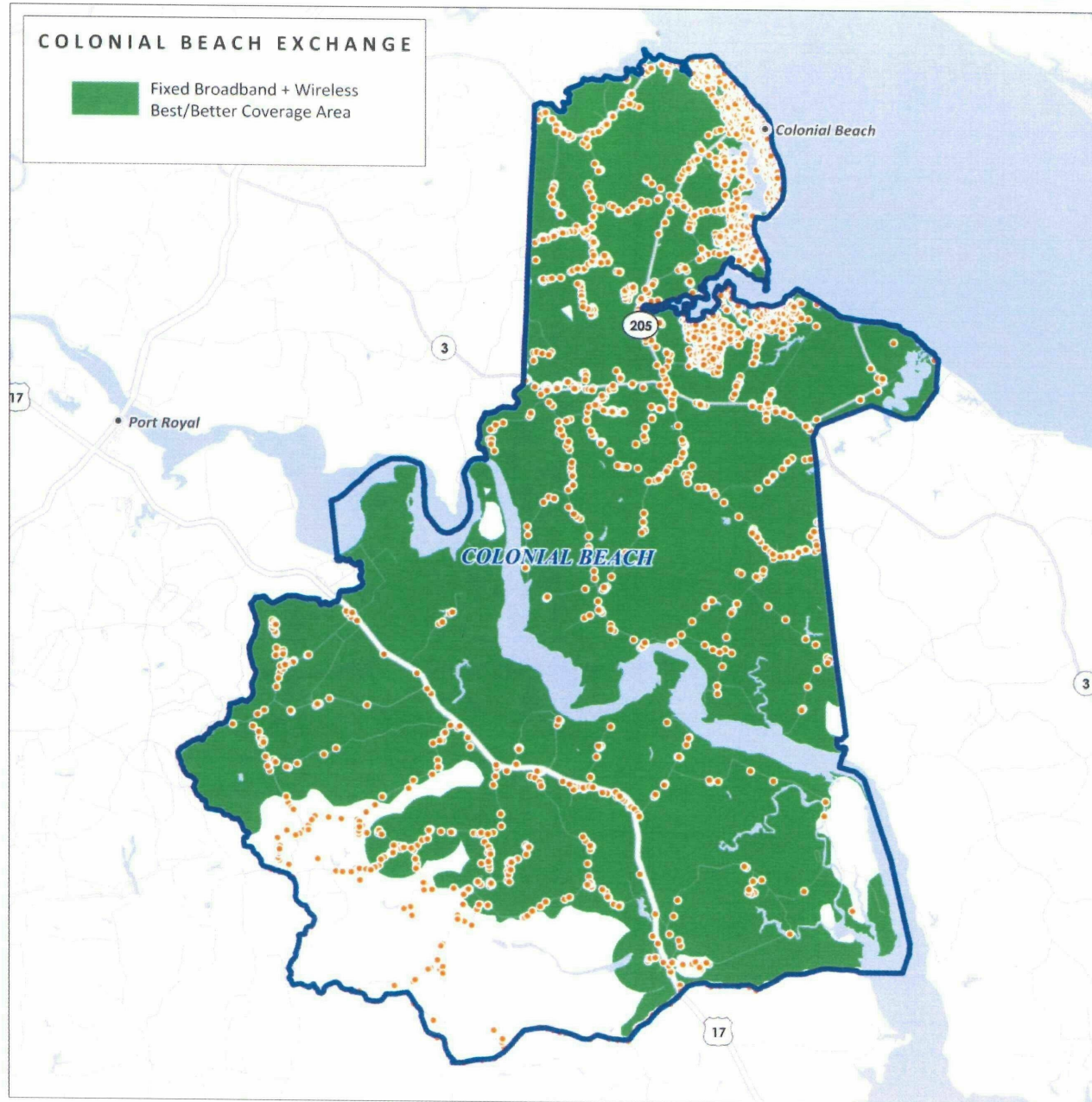
This test is met by the combined coverage of a number of wireless competitors, including AT&T Wireless, nTelos Wireless, Sprint, and T-Mobile. (See Attachment A).

*Source: Page 42 of http://hraunfoss.fcc.gov/edocs_public/attachmatch/DOC-296239A1.pdf

ATTACHMENT A

**Colonial Beach, King George, Tazewell and Franklin
Exchanges**

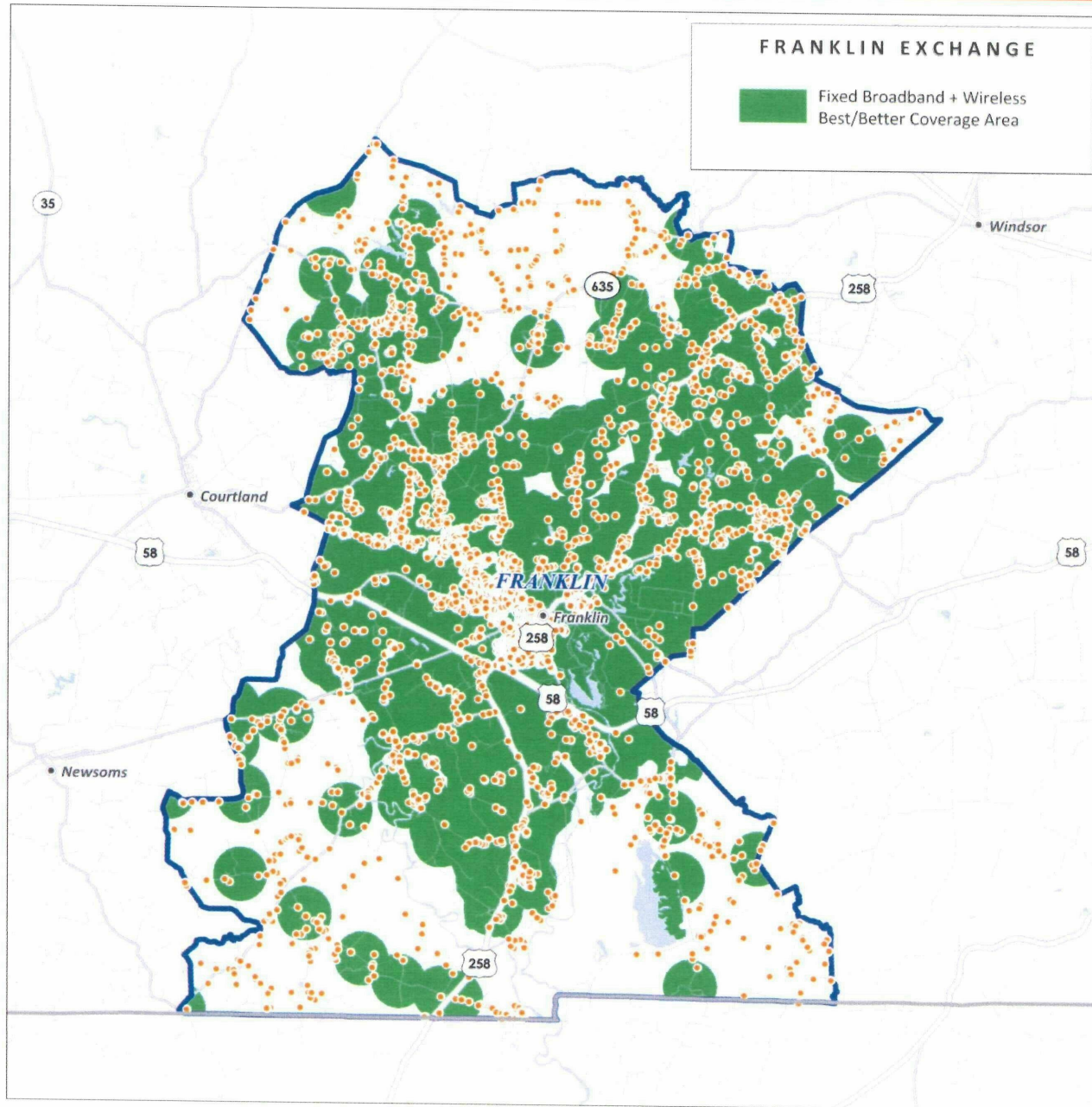
Colonial Beach



3,757 Households

88.0% of Households Covered by Broadband

92.7% of Households Covered by Best / Better Wireless



6,983 Households

*87.1% of Households
Covered by
Broadband*

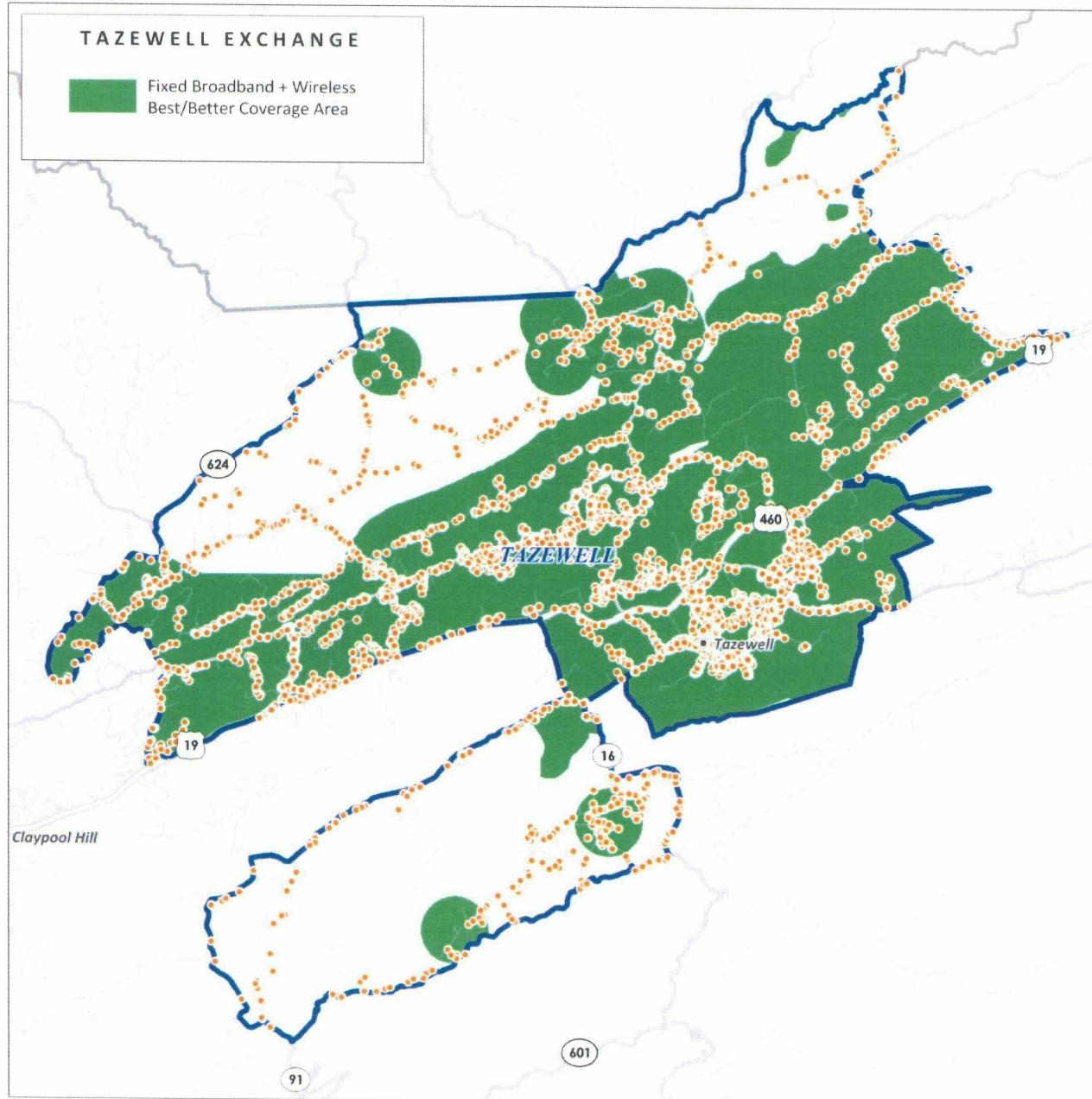
*79.2% of Households
Covered by Best /
Better Wireless*



5,600 Households

*99.9% of Households
Covered by
Broadband*

*90.7% of Households
Covered by Best /
Better Wireless*



5,067 Households

*86.6% of Households
Covered by
Broadband*

*79.9% of Households
Covered by Best /
Better Wireless*



Coverage area: 22443 (COLONIAL BEACH) E

Individual Plans

[Family Plans](#)

[Prepaid Plans](#)

[Pay As You Go](#)

[Data Plans](#)

To order by phone, call 1-888-333-6651 (sp online pricing and some devices may not be avail:

Individual Cell Phone Plans

AT&T, the nation's fastest 3G Network, offers a variety of individual cell phone plans where you'll enjoy:

- Unlimited calling to other AT&T wireless customers with **Mobile to Mobile** while in the U.S.
- No roaming or long distance charges in the U.S.
- Saving unused minutes with **Rollover®**
- Get unlimited calling to and from your favorite U.S. phone numbers at no extra charge with **A-list**. [Details](#)
- Unlimited calling on **Nights and Weekends** for most plans

On the road again? Check out our national coverage in areas you plan to visit.

- [View national map](#)
- [View Canada map](#)

*Unlimited weekday minutes from 9pm to 6am and unlimited minutes on weekends.

Nation Plans

| Minutes | Monthly Cost | Rollover® | Unlimited Nights/Weekends* | Unlimited Mobile to Mobile | A-List† | Additional Details |
|-----------|--------------|-----------|----------------------------|----------------------------|---------|---|
| 450 | \$39.99 | ✓ | Includes 5000 | ✓ | | View Details <input type="button" value="Add to Cart"/> |
| 900 | \$59.99 | ✓ | ✓ | ✓ | ✓ | View Details <input type="button" value="Add to Cart"/> |
| Unlimited | \$69.99 | | ✓ | ✓ | | View Details <input type="button" value="Add to Cart"/> |

Nation with Canada Plans

No long distance or roaming charges for voice calls between the US and Canada and a data pay-per-use rate of \$2/MB in Canada.

| Minutes (U.S. + Canada) | Monthly Cost | Rollover® | Included Nights/Weekends (U.S. + Canada) | Unlimited Mobile to Mobile in the U.S.** | A-List† | Additional Details |
|----------------------------|--------------|-----------|--|--|---------|--|
| 450 | \$59.99 | ✓ | Includes 1000 | ✓ | | View Details Add to Cart |

| | | | | | | |
|------|----------|---|---------------|---|---|--|
| 900 | \$79.99 | ✓ | Includes 1000 | ✓ | ✓ | View Details Add to Cart |
| 1350 | \$99.99 | ✓ | Includes 1000 | ✓ | ✓ | View Details Add to Cart |
| 2000 | \$119.99 | ✓ | Includes 1000 | ✓ | ✓ | View Details Add to Cart |
| 4000 | \$169.99 | ✓ | Includes 1000 | ✓ | ✓ | View Details Add to Cart |
| 6000 | \$219.99 | ✓ | Includes 1000 | ✓ | ✓ | View Details Add to Cart |

Other Monthly
Charges | Plan
Terms | Online
Pricing
Returns Policy & Earl
Termination Fee |
Additional Messaging
Data Charges
Shipping Information

** Mobile to Mobile only applies to calls made and received while in the U.S., Puerto Rico, and U.S.V.I.

† Add any U.S. number, on any network - including landline numbers. Calls to and from your A-List numbers are not charged against your rate plan, Mobile to Mobile, or Rollover® minutes. Details

Senior Plan - Available to customers 65 and older.

| Minutes | Monthly Cost | Rollover® | Unlimited Nights/Weekends* | Unlimited Mobile to Mobile | Additional Details |
|---------|--------------|-----------|-------------------------------|-------------------------------|---|
| 200 | \$29.99 | | Includes 500 | ✓ | View Details Add to Cart Must be 65 or older Verified at checkout |

STAY CONNECTED!

Sign up for email updates with the latest wireless specials. Enter Your Email:

Service provided by AT&T Mobility.

[Wireless Service Agreement](#) | [Cell Phone Records Security](#)

AT&T on the Web

[att.com](#)
Shop. Service. Support.

[att.net](#)
E-mail - News - Weather & More

[Privacy Policy](#) | [Careers](#) | [Contact Us](#) | [Terms of Use](#) | [Site Map](#) | [Accessibility](#)

©2010 AT&T Intellectual Property. All rights reserved. AT&T, the AT&T logo and all other AT&T marks contained herein are trademarks of AT&T Intellectual Property and/or AT&T affiliated companies.

AT&T 36USC220506

[YELLOWPAGES.COM](#)

Digital White & Yellow Pages



Proud Sponsor of the U.S. Olympic Team



Find a Store | Business



My Sprint Shop Digital Lounge Community Support

Plans Phones Services Accessories Promotions Coverage Maps Shopping Cart

Order by phone
1-888-868-7500

Retrieve my Saved
You are shopping in Franklin, VA

Narrow My List >

Direct Connect Individual Share Mobile Broadband Any Mobile, AnytimeSM

Reset

Everything Data
with
Any Mobile,
AnytimeSM

\$69.99

The competition just
can't measure up.

You do the math



Simply Everything[®]

Everything your phone, PDA or smartphone can do nationwide - unlimited text, surf, email, listen, watch, find and of course, talk - on one simple plan.

This plan includes

Unlimited data on our network: Web surfing, email, BlackBerry Internet Services (BIS), GPS Navigation, Sprint TV and Radio, NASCAR Sprint Cup MobileSM

Unlimited Direct Connect: Direct Connect and Group Connect (for capable phones)

Unlimited messaging: Text, pictures and video

Unlimited talk on our network: Anytime Minutes and nationwide long distance

> Learn more about what's included in this plan

| | Anytime Minutes | Monthly Price | Additional Anytime Minutes | |
|------------|-----------------|---------------|----------------------------|--------|
| Best Value | Unlimited | \$99.99 | Unlimited | Select |

Everything Data - with Any Mobile, AnytimeSM

Introducing Any Mobile, Anytime, forget about restrictive calling circles. Our Everything Data plans give you unlimited data, messages and calls to any mobile, anytime while on the Sprint Network. That's access to over 250 million U.S. mobile phones nationwide. Take advantage of unlimited Nationwide messaging, Web surfing, and nights and weekends with nights starting at 7 p.m. Learn more about how our \$69.99 plan compares to competition.

This plan includes

Any Mobile, Anytime: Unlimited domestic calls from the Sprint network to and from ANY U.S. mobile phone regardless of carrier. Any network, any time.

Unlimited data on our network: Web surfing, email, BlackBerry Internet Services (BIS), GPS Navigation, Sprint TV and Radio, NASCAR Sprint Cup MobileSM

Unlimited Direct Connect: Direct Connect and Group Connect (for capable phones)

Unlimited messaging: Text, pictures and video

Talk: Night calling and weekends starting at 7 p.m., nationwide long distance and no roaming charges

> Learn more about what's included in this plan

| Anytime Minutes | Monthly Price | Additional Anytime Minutes | |
|-----------------|---------------|----------------------------|--------|
| 450 | \$69.99 | 45¢/min | Select |
| 900 | \$89.99 | 40¢/min | Select |

Everything Messaging

Communicate without saying a word; with this plan, you can text, share and send your heart out.

This plan includes

Unlimited Direct Connect: Direct Connect and Group Connect (for capable phones)

Unlimited messaging: Text, pictures and video

Talk: Unlimited Sprint mobile to mobile, night calling and weekends starting at 7 p.m., nationwide long distance and no roaming charges

> Learn more about what's included in this plan

| Anytime Minutes | Monthly Price | Additional Anytime Minutes | |
|-----------------|---------------|----------------------------|--------|
| 450 | \$49.99 | 45¢/min | Select |
| 900 | \$69.99 | 40¢/min | Select |

Talk

Let your voice be heard with these voice-only plans.

This plan includes

Talk: Unlimited mobile to mobile, night calling and weekends starting at 7 p.m., nationwide long distance and no roaming charges

Unlimited Direct Connect: Direct Connect and Group Connect (for capable phones)

> Learn more about what's included in this plan

Additional plan options:

Unlimited Nights & Weekends

- Unlimited Nights & Weekends starting at 7pm! - \$0.00
- Nights and Weekends starting at 6PM - \$5.00

| Anytime Minutes | Monthly Price | Additional Anytime Minutes | |
|-----------------|---------------|----------------------------|--------|
| 450 | \$39.99 | 45¢/min | Select |
| 900 | \$59.99 | 40¢/min | Select |

Basic

Get back to the basics with this plan ideal for the occasional caller.

This plan includes

Talk: Night calling and weekends starting at 9 p.m., nationwide long distance and no roaming charges

Unlimited Direct Connect: Direct Connect and Group Connect (for capable phones)

> Learn more about what's included in this plan

Additional plan options:

Unlimited Nights & Weekends

- Nights and Weekends - Starting at 9pm - \$0.00
- Nights and Weekends - Starting at 7pm - \$5.00
- Nights and Weekends - Starting at 6pm - \$10.00

| Anytime Minutes | Monthly Price | Additional Anytime Minutes | |
|-----------------|---------------|----------------------------|--------|
| 200 | \$29.99 | 45¢/min | Select |

Features included in all voice plans.

[Terms & Conditions](#)

[Site map](#)

[Order by phone 1-866-866-7509](#)

[About Us](#)

[Contact Us](#)

[En Español](#)

[Terms of Use](#)

[Privacy Policy](#)

[Copyright](#)

© 2010 Sprint. All rights reserved.



Skip Navigation

Discover Shop Connect and Share Support
 Phones Plans Services Accessories Deals Coverage Business

Coverage Store Locator Cart Enter Location
 My T-Mobile: Phone # Password Register Forgot Password?
 English Español Search T-Mobile

Home > Plans > Individual Plans

What type of plan are you looking for?

Individual
 Family
 Prepaid
 Internet & Email

Plan Type

- Talk
- Talk + Text
- Talk + Text + Web

Individual Plans

Individual Plans

Choose a plan that fits the way you like to connect—Talk only, Talk + Text, or Talk + Text + Web.

Even MoreSM plans (2 Year Contract) offer great device discounts, so your upfront costs are lower.

Even More PlusSM plans (No Annual Contract) give you our best monthly rate plan pricing, so you'll save money over time.

All our individual plans include:

- Unlimited nationwide T-Mobile to T-Mobile calling
- Unlimited nights and weekends
- Free overage alerts (for non-unlimited plans)
- Whenever Minutes[®] you can use anytime

Pick your plan.

enter zip code



To see all available plans, please enter the ZIP Code where you'll be using your phone the most.

compare

| Individual Talk | Even More Plus SM (No Annual Contract) | Even More SM (2 Year Contract) |
|--|---|---|
| <p>Unlimited Minutes Talk</p> <p><input type="checkbox"/> compare</p> | <p>\$49.99 per month</p> | <p>\$59.99 per month</p> |
| <p>1000 Minutes Talk</p> <p><input type="checkbox"/> compare</p> | <p>\$39.99 per month</p> | <p>\$49.99 per month</p> |

What's the difference?

compare

500 Minutes

Talk

\$29.99
per month

\$39.99
per month

compare

Individual Talk + Text

What's the difference?

Even More PlusSM (No Annual Contract)

Even MoreSM (2 Year Contract)

Unlimited Minutes

Talk + Unlimited Text

\$59.99
per month

\$69.99
per month

compare

1000 Minutes

Talk + Unlimited Text

\$49.99
per month

\$59.99
per month

compare

500 Minutes

Talk + Unlimited Text

\$39.99
per month

\$49.99
per month

compare

Individual Talk + Text + Web

What's the difference?

Even More PlusSM (No Annual Contract)

Even MoreSM (2 Year Contract)

Unlimited Minutes

Talk + Unlimited Text +
Unlimited Web

\$79.99
per month

\$99.99*
per month

compare

1000 Minutes

Talk + Unlimited Text +
Unlimited Web

\$69.99
per month

\$89.99*
per month

compare

500 Minutes

Talk + Unlimited Text +
Unlimited Web

\$59.99
per month

\$79.99*
per month

compare

compare

* Plan prices include \$30 Unlimited Web access for smartphones. For phones other than smartphones, Unlimited Web access is \$10 per month.

Limited time offer; subject to change. Taxes and fees additional. **Unlimited features are only for direct communication between two people.** Credit approval, \$35 per line activation fee and two-year agreement may be required. Up to \$200/line early cancellation fee applies to two-year agreements. If you switch plans you may be bound by existing contract term (and related \$200/line early contract termination fee) and \$35/line Even More Plus activation fee may apply. You may be unable to switch to some plans. Additional requirements may apply to business customers. Premier and other business/association discounts may not be available.

Shop: [Check Order Status](#) [Return Policy](#) [HotSpot](#) [Business](#) [Puerto Rico](#)

Site

T-Mobile for: [Developers](#) [Retailers](#) [Affiliates](#)

Company: [About T-Mobile](#) [Jobs](#) [Press](#) [Deutsche Telekom](#) [International](#) [Contact Us](#)

Legal: [Privacy Policy](#) [Privacy Resources](#) [Language Assistance](#) [Public Safety/911](#) [Terms & Conditions](#) [Terms of Use](#)

©2002-2010 T-Mobile USA, Inc.



| |
|----------------------------|
| Family Plans |
| Individual Plans |
| Prepay Plans + |
| Messaging & Data Plans |
| Dare to Compare |
| Coverage Maps & Locator |

nTelos Individual Plans

Discover the nation's most affordable nationwide 3G unlimited plans.

 **Dare to Compare with Nationwide 3G Unlimited Smartphone Plans** - Click here to learn more.

Click Here to view nTelos Nations Coverage Map.

nationwide 3G unlimited smartphone talk, text & web \$79.99

- Save \$480 a year versus AT&T and Verizon!
- Note: Non-Smartphone Devices can share this plan for \$10 less. Discount will be applied at time of billing and will not be reflected in the shopping cart

| Monthly Fee | Daytime Minutes | Evening & Weekend Minutes | Roaming Minutes | Long Distance | Overage Minutes | Mobile-to-Mobile |
|----------------|-----------------|---------------------------|-----------------|---------------|-----------------|------------------|
| \$79.99 | Unlimited | Unlimited | \$0.15 | Unlimited | - | Unlimited |

Terms & Agreements

nationwide 3G unlimited talk, text & web \$69.99

- Save \$360 a year versus AT&T and Verizon!

| Monthly Fee | Daytime Minutes | Evening & Weekend Minutes | Roaming Minutes | Long Distance | Overage Minutes | Mobile-to-Mobile |
|----------------|-----------------|---------------------------|-----------------|---------------|-----------------|------------------|
| \$69.99 | Unlimited | Unlimited | \$0.15 | Unlimited | - | Unlimited |

Your Phone and Plan

Please choose a phone, a plan, and/or accessories to begin your order.

nationwide 3G unlimited talk & text \$59.99

- Save \$360 a year versus AT&T and Verizon!

| Monthly Fee | Daytime Minutes | Evening & Weekend Minutes | Roaming Minutes | Long Distance | Overage Minutes | Mobile-to-Mobile |
|----------------|-----------------|---------------------------|-----------------|---------------|-----------------|------------------|
| \$59.99 | Unlimited | Unlimited | \$0.15 | Unlimited | - | Unlimited |

Terms & Agreements

nationwide 3G unlimited talk \$49.99

- Save \$240 a year versus AT&T and Verizon!

| Monthly Fee | Daytime Minutes | Evening & Weekend Minutes | Roaming Minutes | Long Distance | Overage Minutes | Mobile-to-Mobile |
|----------------|-----------------|---------------------------|-----------------|---------------|-----------------|------------------|
| \$49.99 | Unlimited | Unlimited | \$0.15 | Unlimited | - | Unlimited |

Terms & Agreements

network unlimited \$39.99

- Unlimited Minutes on the entire nTelos Network
- Nationwide Long Distance Included

| Monthly Fee | Daytime Minutes | Evening & Weekend Minutes | Roaming Minutes | Long Distance | Overage Minutes | Mobile-to-Mobile |
|----------------|-----------------|---------------------------|-----------------|---------------|-----------------|------------------|
| \$39.99 | Unlimited | Unlimited | \$0.15 | Unlimited | - | Unlimited |

Terms & Agreements



TO ORDER BY PHONE
1-800-583-4

BEST OFFER EVER ON VONAGE WORLDSM

Get unlimited local and long distance, FREE calling to more than 60 countries* and other great features like readable voicemail. When you add it all up, nothing else stacks up.

*See country list and important details

PLANS

HOW IT WORKS

FEATURES

FAQ

COMPARE

SIGN UP

VONAGE WORLD

- Unlimited calling to the U.S., Canada, India, Mexico and more than 60 other countries
- Unlimited readable voicemail transcriptions sent via text and email with Vonage Visual VoicemailSM
- Caller ID, Call Waiting, Anonymous Call Block, 3-Way Calling & tons of other standard features
- Enhanced 411 directory assistance included
- Keep your existing number**

\$25.99/MO[†]

SIGN UP NOW

with 1-year agreement plus fees & taxes
30-Day Money Back Guarantee

First Month Service FREE

VONAGE LITE

- 200 minutes of outbound calling across the U.S., Canada, and Puerto Rico and only 5c per additional minute
- Unlimited incoming and Vonage to Vonage calls
- Caller ID, Call Waiting, Anonymous Call Block, 3-Way-Calling & tons of other standard features
- Keep your existing number**

\$9.99/MO[†]

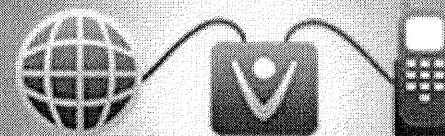
SIGN UP NOW

with 1-year agreement plus fees & taxes
30-Day Money Back Guarantee

Online Only Offer

All you need:

Any home phone, a Vonage adapter and high-speed Internet



[learn more](#)



ACCOUNT LOG-IN

User name

Password

GO

| | | | | | | | | |
|--------------------|-------------------|---------------------|-----------------|----------------------|--------------------|-------------|-----------------------|---------------------|
| HOME | RATE PLANS | AVAILABILITY | FEATURES | SUPPORT | SIGN UP | | | |
| Unlimited In-State | Unlimited USA | Unlimited USA PLUS | Unlimited World | Unlimited World PLUS | Unlimited Business | Video Phone | Bring Your Own Device | International Rates |

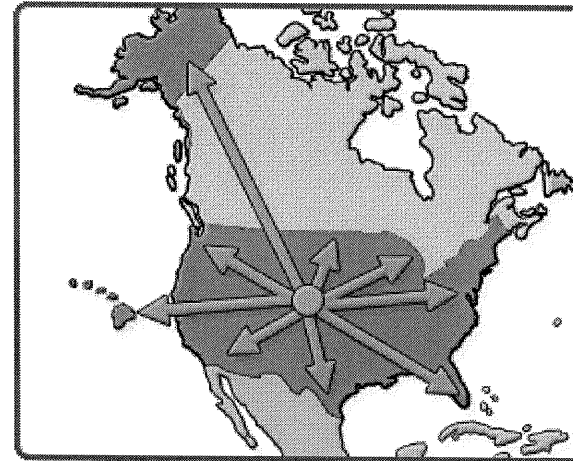
RATE PLANS

The BroadVoice Unlimited USA Plan: \$17.95 mo

The BroadVoice Unlimited USA Plan lets you talk all you want to anyone in the United States. For just \$17.95 you get unlimited* calling and your choice of phone number - no matter where you live!

The BroadVoice Unlimited USA Plan offers you:

- ▶ A choice of an area code and number from one of over 3,800 rate centers across the USA
- ▶ All BroadVoice's Basic and Advanced calling features included.
- ▶ Unlimited inbound calls to your number.
- ▶ Calls to Canada just 2.0 cents per minute.
- ▶ BroadVoice's low international calling rates with NO connection fees.
- ▶ Use the BroadVoice online Account Portal to check voicemail and personalize features.



SIGN-UP!

COMPARE BROADVOICE PLANS

The Bottom Line... what does it cost?

Based on selection of our standard VoIP Adapter.

The first month:

| | |
|--|-------|
| Monthly Fee | 17.95 |
| One-Time Activation Fee | 29.95 |
| Emergency 911 Cost Recovery | 1.00 |
| Universal Service Fund - what's this? | 1.97 |
| Regulatory Recovery Fee - what's this? | 2.50 |
| Shipping/Handling of Adapter | 14.95 |

TOTAL \$68.32

Each Month Thereafter:

| | |
|-------------|-------|
| Monthly Fee | 17.95 |
|-------------|-------|

| | |
|--|----------------|
| Emergency 911 Cost Recovery | 1.00 |
| Universal Service Fund - what's this? | 1.97 |
| Regulatory Recovery Fee - what's this? | 2.50 |
| TOTAL | \$23.42 |

[Company Information](#) | [Partnering Opportunities](#) | [Privacy Policy](#) | [Terms and Conditions](#) | [Guarantee](#) | [Warranty](#) | [Contact Us](#) | [Site Map](#)

BroadVoice™ Internet phone service allows residential and business customers to use their cable modem, DSL modem, or other BroadBand Internet connection to make and receive Voice over IP (VoIP) phone calls using an ordinary touchtone telephone. Bring Your Own Device™ (BYOD™) plans allow customers to connect their own SIP devices, including IP phones, softphones, and Asterisk PBXs. BroadVoice utilizes our **SecureSIP™** technology to ensure accurate connectivity throughout the user experience. SmartSIP™ technology by BroadVoice is used to optimize the routing of network voice traffic, provides the best possible quality voice transmission for each customer's phone device, and automatically configures BroadVoice Authorized BYOD™ devices

* Significant restrictions apply to Unlimited Plans. Consult the Terms and Conditions for details.

** Unlimited World Plans do not include calls to International Mobile Phone Numbers or to Special Services Numbers such as Toll-Free or Caller-Paid Information Services or 900 Numbers.

© 2003-2009 BroadVoice. All Rights Reserved, unless noted.

BroadVoice's services are not related to, provided by, or endorsed by Broadcom Corporation.

BroadVoice branded product images are CC-BY. Attribute with a link to the source page.



866-457-2807

Call Now to Order

Sign Up for Lingo Smart Talk and Enjoy:

- **Unlimited Calling to over 45 Countries**
 - **Argentina**
 - **Australia**
 - **Austria**
 - **Belgium**
 - **Brazil (Rio de Janeiro and Sao Paulo only)**
 - **Canada**
 - **Chile**

- **China**
- **China-Mobile**
- **Cyprus**
- **Denmark**
- **Finland**
- **France**
- **Germany**
- **Greece**
- **Guam**
- **Hong Kong**
- **Hong Kong-Mobile**
- **Hungary**
- **India**
- **India-Mobile**
- **Ireland**
- **Israel**
- **Italy**
- **Japan**
- **Jordan**
- **Luxembourg**
- **Malaysia**
- **Mexico**
- **Netherlands**
- **New Zealand**
- **Norway**
- **Peru (Lima only)**
- **Poland**
- **Portugal**
- **Puerto Rico**
- **Russia (Moscow only)**
- **Russia Petersburg**
- **Saipan**
- **Singapore**
- **South Korea**
- **Spain**
- **Sweden**
- **Switzerland**
- **Taiwan**
- **Thailand**

- UK
- US Virgin Islands
- USA
- Vatican City
- Venezuela (Caracas only)
- **Unlimited Calling across the U.S.**
- **Over 20 Popular Calling Features included FREE**
 - Voicemail
 - Redial
 - Online Account Management
 - Caller ID with Name
 - Area code Selection
 - FREE In-Network Calling
 - Call Waiting
 - 3 Way Calling
 - Local Number Portability
 - Call Forwarding
 - Directory Assistance
 - Universal Phone Number
 - Caller ID Block
 - Emergency Calling
 - Great International Rates
 - and more...
- **Crystal Clear Sound Quality**
- **Only \$9.95/mo for 3 months, then just \$21.95/mo**

Get the Low Introductory Rate

Promo Code

Special Promotion Offer Ends 7/31/2010

ORDER NOW

I want Lingo on my Cell Phone. [Learn More »](#)

Unlimited Calling to All These Countries & More!




Buy Now 
\$249.99 Risk-free trial with 30-day return
Free Shipping Limited time offer

*Pay only applicable taxes and fees. Unlimited calls are subject to normal residential usage limitations. Click here for more details.

Ooma lets you make free U.S. calls over the Internet with your existing home phone. The award-winning Ooma system offers 911 service, free U.S. calls, voicemail, caller-ID, call-waiting and low cost international rates with outstanding voice quality.



Save over \$930 with Ooma in 2 years.

.00  Calculate your savings



HEAR THE DIFFERENCE:
PureVoice™ delivers clear calls.

What they're saying.



Enter your typical
monthly bill



Sound samples recorded under congested network conditions with 30% packet loss.
Ooma PureVoice available exclusively for the Ooma Telo.



[Blog](#) [Company](#) [Careers](#) [News & Media](#) [Events](#) [Awards](#) [Contact](#) [Legal](#) [Site Map](#)

Do you have questions? Call us, free of course, at 1-866-452-6662 Monday-Friday 8am-5pm PST, Saturday-Sunday closed.
Copyright © 2007-2010 Ooma, Inc. All rights reserved.

Follow Ooma on:
[Facebook](#)

[Twitter](#)



Call phones anywhere in the world at great low rates.

15% discount on 12 month subscriptions applied at check out

Enter a country. Select a subscription. Start calling.

Multiple countries · \$ USD

| | |
|---------------------------|-------------------------|
| <u>American Dollars</u> | <u>Euros</u> |
| <u>Japanese Yen</u> | <u>British Pounds</u> |
| <u>Polish złote</u> | <u>Brazil reais</u> |
| <u>Swedish kronor</u> | <u>Danish kroner</u> |
| <u>Hong Kong dollars</u> | <u>Swiss francs</u> |
| <u>Norwegian kroner</u> | <u>Canadian dollars</u> |
| <u>Australian dollars</u> | <u>South Korean won</u> |
| <u>Taiwanese Dollars</u> | |

Landlines and mobiles

Landlines

Unlimited US & Canada³

Unlimited North America³

Unlimited World³

United States (USA)

(incl. Guam, Puerto Rico)

Canada

Mexico City, Guadalajara and Monterrey landlines only. Discounted rates to the rest of Mexico.

United States (USA)

(incl. Guam, Puerto Rico)

Canada

Over 40 other destinations including

United States (USA)

(incl. Guam, Puerto Rico)

Canada

\$2.99/month²

\$7.99/month²

\$13.99/month²

[Buy now](#)

[Buy now](#)

[Buy now](#)

Includes discounted rates to the rest of Mexico: 3¢/min to landlines, 15¢/min to cell phones

Pay per minute instead?

[Buy Skype Credit](#) and pay as you call at our standard rates.

Landlines and mobiles from

2.1¢ /minute¹

¹ A small connection fee applies to Pay As You Go calls only.

² Certain subscriptions have minimum 3 month term.

³ A fair usage policy applies.

FAQs

Can I continue to make calls when I reach my monthly limit of minutes?

Do my unused minutes carry over to the next month?

What is the minimum duration of the contract?

[Read all FAQs](#)

© 2010 Skype Limited

GENERAL CUSTOMER SERVICES TARIFF

VERIZON SOUTH INC.
VIRGINIA

Section 3
Twenty-First Revised Page 5
Cancels Twentieth Revised Page 5
EFFECTIVE: August 16, 2010

ISSUED: July 2, 2010
BY: President
Richmond, Virginia

S3. BASIC LOCAL EXCHANGE SERVICE

S3.2 Flat Rate Service (Continued)

S3.2.2 Exchange Classification and Rate Groups (Continued)

e. Rate Groups (Continued)

| | Rate Group 6 | Rate Group 7 | Rate Group 8 | Rate Group 9 | Rate Group 10 |
|------------------------------|--------------|--------------|--------------|--------------|---------------|
| Individual Access Line | | | | | |
| Residence (R1/74864) | \$15.59 | \$16.71 | \$16.87 | \$16.87 | \$16.87 |
| Business (B1/11135) | 30.75 | 33.75 | 35.85 | 37.90 | 37.90 |
| Business 24-Month Term** | 28.00 | 31.00 | 33.00 | 35.00 | 35.00 |
| Automatic Access Line | | | | | |
| PBX Trunk | 62.00 | 66.60 | 71.75 | 76.35 | 76.35 |
| 1-10 Lines (AALB/11823) | | | | | |
| 24-Month Term** | 56.50 | 61.00 | 66.00 | 70.50 | 70.50 |
| 11+ Lines (AALB11+/10280) | 52.75 | 56.85 | 60.95 | 65.00 | 65.00 |
| 24-Month Term** | 47.50 | 51.50 | 55.50 | 59.50 | 59.50 |

| Rate Group 6 30,001-50,000 | Rate Group 7 50,001-100,000 | Rate Group 8 100,001-300,000 | Rate Group 9 300,001-1,000,000 | Rate Group 10 1,000,001-Over |
|---|---|---|--|--|
| Barnesville Bluefield Dendron Dwight Grundy Hague Heathsville ^B Kilmarnock Lawrenceville Montross ^B Pocahontas South Brunswick | Boykins Capron Courtland Edom Emporia ^B Farnham Harrisonburg ^{A, B} Ivor ^B Keezletown ^{A, B} Keysville King William Ladysmith ^B Lively Mathews Oakwood Richlands Rocky Gap Tazewell ^A Wakefield | Amherst ^B Appomattox ^B Bridgewater ^{A, B} Broadway ^B Dawn Dayton ^{A, B} Deltaville Disputanta Elkton ^{A, B} Eppes Fork Grotoes ^B Hinton Jewell Ridge King & Queen McGaheysville ^{A, B} Raphine ^B Saluda Tappahannock ^B Weyers Cave ^{A, B} | Allwood Bowling Green Chancellor ^B Claremont Colonial Beach ^A (C) Gladstone Hayes ^{A, B} King George ^{A, B} (C) Pamplin Port Royal ^B Stony Creek | Arcola ^{A, B} Chuckatuck Crittenden ^{A, B} Dale City ^{A, B} Dulles ^{A, B} Dulles Metro ^{A, B} Franklin ^{A, B} (C) Gloucester ^A Great Bridge ^{A, B} Hanover Haymarket ^{A, B} Hickory ^{A, B} Holland Independent Hill ^{A, B} Lorton ^{A, B} Lorton Metro ^{A, B} Manassas ^{A, B} Nokesville ^{A, B} Occoquan ^{A, B} Old Church ^A Princess Anne ^{A, B} Smithfield ^B Stafford ^{A, B} Surry Triangle ^{A, B} Windsor ^B |

*Refer to 3.2.3

Note A: Residential basic telephone services under the exchanges (in bold print) are Competitive and priced as indicated under Tariff 220.

Note B: Business basic telephone services under the exchanges (in bold print) are Competitive and priced as indicated under Tariff 220.

** Termination Liability language is specified in Section S3.4.4.1 of this Tariff.

GENERAL CUSTOMER SERVICES TARIFF

VERIZON SOUTH INC.
VIRGINIA

Section 3
Sixteenth Revised Page 7
Cancels Fifteenth Revised Page 7
EFFECTIVE: August 16, 2010

ISSUED: July 2, 2010
BY: President
Richmond, Virginia

S3. BASIC LOCAL EXCHANGE SERVICE

S3.2 Flat Rate Service (Continued)

S3.2.3 Rates (Continued)

| GSEC/IOSC: | Rate Group | Individual Access Line | | Automatic Access Line (PBX Trunk) | |
|---|------------|------------------------------|--------------------------------|------------------------------------|--------------------------------------|
| | | Residence R1/74864 | Business ³ B1/11135 | 1-10 Lines ³ AALB/11823 | 11+ Lines ³ AALB11+/10280 |
| Callao ^B | 5 | \$ 14.65 | \$ 28.70 | \$ 57.35 | \$ 48.65 |
| Capron | 7 | 16.17 | 33.75 | 66.60 | 56.85 |
| Chancellor ^B | 9 | 16.87 | 37.90 | 76.35 | 65.00 |
| Charlotte Court House | 5 | 14.65 | 28.70 | 57.35 | 48.65 |
| Chase City | 5 | 14.65 | 28.70 | 57.35 | 48.65 |
| Chuckatuck | 10 | 16.87 | 37.90 | 76.35 | 65.00 |
| Claremont | 9 | 16.87 | 37.90 | 76.35 | 65.00 |
| Clarksville | 5 | 14.65 | 28.70 | 57.35 | 48.65 |
| Colonial Beach ^A | 9 | 16.87 | 37.90 | 76.35 | 65.00 |
| Courtland | 7 | 16.71 | 33.75 | 66.60 | 56.85 |
| Crittenden ^{A, B} | 10 | 16.87 | 37.90 | 76.35 | 65.00 |
| Dahlgren ^{A, B} | 5 | 14.65 | 28.70 | 57.35 | 48.65 |
| Dale City ^{A, B} (includes Hoadly) | 10 | 16.87 | 37.90 | 76.35 | 65.00 |
| Dawn | 8 | 16.87 | 35.85 | 71.75 | 60.95 |
| Dayton ^{A, B} | 8 | 16.87 | 35.85 | 71.75 | 60.95 |
| Deltaville | 8 | 16.87 | 35.85 | 71.75 | 60.95 |
| Dendron | 6 | 15.59 | 30.75 | 62.00 | 52.75 |
| Disputanta ELS Adder ² | 8 | 16.87 .13 <u>17.00</u> | 35.85 .30 <u>36.15</u> | 71.75 .60 <u>72.35</u> | 60.95 .51 <u>61.46</u> |
| Doswell ^{A, B} | 4 | 13.64 | 26.10 | 52.25 | 44.55 |
| Drakes Branch | 5 | 14.65 | 28.70 | 57.35 | 48.65 |
| Dulles ^{1, A, B} | 10 | 16.87 | 37.90 | 76.35 | 65.00 |

(C)

Note 1: Dulles customers can choose Flat Rate Service or Message Rate Service. Refer to Section S3.5.2 for Message Rate Service options.
 Note 2: Disputanta Extended Local Service (ELS) Adder provides for unlimited calling to Verizon Virginia's Dinwiddie Exchange.
 Note 3: Term Rates can be located on Pages 4 & 5.
 Note A: Residential basic telephone services under the exchanges (in bold print) are Competitive and priced as indicated under Tariff 220.
 Note B: Business basic telephone services under the exchanges (in bold print) are Competitive and priced as indicated under Tariff 220.

GENERAL CUSTOMER SERVICES TARIFF

VERIZON SOUTH INC.
VIRGINIA

Section 3
Eighteenth Revised Page 8
Cancels Seventeenth Revised Page 8
EFFECTIVE: August 16, 2010

ISSUED: July 2, 2010
BY: President
Richmond, Virginia

S3. BASIC LOCAL EXCHANGE SERVICE

S3.2 Flat Rate Service (Continued)

S3.2.3 Rates (Continued)

| GSEC/IOSC: | Rate Group | Individual Access Line | | Automatic Access Line (PBX Trunk) | |
|---|------------|------------------------|-----------------------|-----------------------------------|------------------------|
| | | Residence | Business ¹ | 1-10 Lines ¹ | 11+ Lines ¹ |
| | | R1/74864 | B1/11135 | AALB/11823 | AALB11+/10280 |
| Edom | 7 | \$ 16.71 | \$ 33.75 | \$ 66.60 | \$ 56.85 |
| Elkton ^{A, B} | 8 | 16.87 | 35.85 | 71.75 | 60.95 |
| Emporia ^B | 7 | 16.71 | 33.75 | 66.60 | 56.85 |
| Eppes Fork | 8 | 16.87 | 35.85 | 71.75 | 60.95 |
| Farnham | 7 | 16.71 | 33.75 | 66.60 | 56.85 |
| Franklin ^{A, B} | 10 | 16.87 | 37.90 | 76.35 | 65.00 |
| Gladstone | 9 | 16.87 | 37.90 | 76.35 | 65.00 |
| Gloucester ^A | 10 | 16.87 | 37.90 | 76.35 | 65.00 |
| Great Bridge ^{A, B} (includes Battlefield) | 10 | 16.87 | 37.90 | 76.35 | 65.00 |
| Grottoes ^B | 8 | 16.87 | 35.85 | 71.75 | 60.95 |
| Grundy | 6 | 15.59 | 30.75 | 62.00 | 52.75 |
| Hague | 6 | 15.59 | 30.75 | 62.00 | 52.75 |
| Hanover | 10 | 16.87 | 37.90 | 76.35 | 65.00 |
| Harrisonburg ^{A, B} | 7 | 16.71 | 33.75 | 66.60 | 56.85 |
| Hayes ^{A, B} | 9 | 16.87 | 37.90 | 76.35 | 65.00 |
| Haymarket ^{A, B} | 10 | 16.87 | 37.90 | 76.35 | 65.00 |
| Heathsville ^B | 6 | 15.59 | 30.75 | 62.00 | 52.75 |
| Hickory ^{A, B} | 10 | 16.87 | 37.90 | 76.35 | 65.00 |

(C)

Note A: Residential basic telephone services under the exchanges (in bold print) are Competitive and priced as indicated under Tariff 220.
 Note B: Business basic telephone services under the exchanges (in bold print) are Competitive and priced as indicated under Tariff 220.
 Note 1: Term Rates can be located on Pages 4 & 5.

GENERAL CUSTOMER SERVICES TARIFF

VERIZON SOUTH INC.
VIRGINIA

Section 3
Sixteenth Revised Page 9
Cancels Fifteenth Revised Page 9
EFFECTIVE: August 16, 2010

ISSUED: July 2, 2010
BY: President
Richmond, Virginia

S3. BASIC LOCAL EXCHANGE SERVICE

S3.2 Flat Rate Service (Continued)

S3.2.3 Rates (Continued)

| GSEC/IOSC: | Rate Group | Individual Access Line | | Automatic Access Line (PBX Trunk) | |
|--|---------------|---|-----------------------|--------------------------------------|------------------------|
| | | Residence | Business ² | 1-10 Lines ² | 11+ Lines ² |
| | | R1/74864 | B1/11135 | AALB/11823 | AALB11+/10280 |
| Keezletown ^{A, B} | 7 | \$ 16.71 | \$ 33.75 | \$ 66.60 | \$ 56.85 |
| Keysville | 7 | 16.71 | 33.75 | 66.60 | 56.85 |
| Kilmarnock | 6 | 15.59 | 30.75 | 62.00 | 52.75 |
| King George ^{A, B} | 9 | 16.87 | 37.90 | 76.35 | 65.00 |
| King & Queen | 8 | 16.87 | 35.85 | 71.75 | 60.95 |
| King William | 7 | 16.71 | 33.75 | 66.60 | 56.85 |
| Ladysmith ^B | 7 | 16.71 | 33.75 | 66.60 | 56.85 |
| Lawrenceville | 6 | 15.59 | 30.75 | 62.00 | 52.75 |
| Lively | 7 | 16.71 | 33.75 | 66.60 | 56.85 |
| Lorton ^{A, B} | 10 | 16.87 | 37.90 | 76.35 | 65.00 |
| Lorton Metro ^{1, A, B} | 10 | (Refer to Message Rate Service in Section S3.5) | | | |
| Manassas ^{A, B} | 10 | 16.87 | 37.90 | 76.35 | 65.00 |
| Mathews | 7 | 16.71 | 33.75 | 66.60 | 56.85 |
| Maxie | 5 | 14.65 | 28.70 | 57.35 | 48.65 |
| McGaheysville ^{A, B} | 8 | 16.87 | 35.85 | 71.75 | 60.95 |
| Montross ^B | 6 | 15.59 | 30.75 | 62.00 | 52.75 |
| Nokesville ^{A, B} | 10 | 16.87 | 37.90 | 76.35 | 65.00 |
| Oakwood | 7 | 16.71 | 33.75 | 66.60 | 56.85 |

(C)

Note 1: Lorton Metro customers can only subscribe to Message Rate Service. Refer to Section S3.5.3.b.

Note ^A: Residential basic telephone services under the exchanges (in bold print) are Competitive and priced as indicated under Tariff 220.

Note ^B: Business basic telephone services under the exchanges (in bold print) are Competitive and priced as indicated under Tariff 220.

Note 2: Term Rates can be located on Pages 4 & 5.

GENERAL CUSTOMER SERVICES TARIFF

VERIZON SOUTH INC.
VIRGINIA

Section 3
Seventeenth Revised Page 10
Cancels Sixteenth Revised Page 10
EFFECTIVE: August 16, 2010

ISSUED: July 2, 2010
BY: President
Richmond, Virginia

S3. BASIC LOCAL EXCHANGE SERVICE

S3.2 Flat Rate Service (Continued)

S3.2.3 Rates (Continued)

| GSEC//OSC: | Rate Group | Individual Access Automatic Access Line | | | |
|---|------------|---|-----------------------|-------------------------|------------------------|
| | | Line | | (PBX Trunk) | |
| | | Residence | Business ³ | 1-10 Lines ³ | 11+ Lines ³ |
| | | R1/74864 | B1/11135 | AALB11823 | AALB11+/10280 |
| Raphine^B | 8 | \$ 16.87 | \$ 35.85 | \$ 71.75 | \$ 60.95 |
| Reedville | 5 | 14.65 | 28.70 | 57.35 | 48.65 |
| Richlands | 7 | 16.71 | 33.75 | 66.60 | 56.85 |
| ELS Adder ¹ | | <u>+ .02</u> | <u>+ .03</u> | <u>.03</u> | <u>+ .03</u> |
| | | 16.73 | 33.78 | 66.63 | 56.88 |
| Rocky Gap | 7 | 16.71 | 33.75 | 66.60 | 56.85 |
| ELS Adder ² | | <u>+2.40</u> | <u>+4.83</u> | <u>+9.81</u> | <u>+8.32</u> |
| | | 19.11 | 38.58 | 76.41 | 65.17 |
| Saluda | 8 | 16.87 | 35.85 | 71.75 | 60.95 |
| Smithfield^B | 10 | 16.87 | 37.90 | 76.35 | 65.00 |
| South Brunswick | 6 | 15.59 | 30.75 | 62.00 | 52.75 |
| Stafford^{A, B} | 10 | 16.87 | 37.90 | 76.35 | 65.00 |
| Stony Creek | 9 | 16.87 | 37.90 | 76.35 | 65.00 |
| Surry | 10 | 16.87 | 37.90 | 76.35 | 65.00 |
| Tappahannock^B | 8 | 16.87 | 35.85 | 71.75 | 60.95 |
| Tazewell^A | 7 | 16.71 | 33.75 | 66.60 | 56.85 |
| Triangle^{A, B} (includes Quantico) | 10 | 16.87 | 37.90 | 76.35 | 65.00 |
| Wakefield | 7 | 16.71 | 33.75 | 66.60 | 56.85 |
| Warsaw | 5 | 14.65 | 28.70 | 57.35 | 48.65 |
| Weyers Cave^{A, B} | 8 | 16.87 | 35.85 | 71.75 | 60.95 |
| Windsor^B | 10 | 16.87 | 37.90 | 76.35 | 65.00 |

(C)

Note 1: Richlands Extended Local Service (ELS) Adder provides for unlimited calling to Verizon Virginia's Haysi Exchange.

Note 2: Rocky Gap Extended Local Service (ELS) Adder provides for unlimited calling to Embarq's Bland Exchange.

Note 3: Term Rates can be located on Pages 4 & 5.

Note A: Residential basic telephone services under the exchanges (in bold print) are Competitive and priced as indicated under Tariff 220.

Note B: Business basic telephone services under the exchanges (in bold print) are Competitive and priced as indicated under Tariff 220.

GENERAL CUSTOMER SERVICES TARIFF

VERIZON SOUTH INC.
VIRGINIA

Section 3
Twenty-First Revised Page 33
Cancels Twentieth Revised Page 33
EFFECTIVE: August 16, 2010

ISSUED: July 2, 2010
BY: President
Richmond, Virginia

S3. BASIC LOCAL EXCHANGE SERVICE

S3.4 Optional Usage Sensitive Service (USS) (Continued)

S3.4.5 Usage Sensitive Service Rates (Continued)

a. Access Line Rates (Continued)

| | Rate Group 6 | Rate Group 7 | Rate Group 8 | Rate Group 9 | Rate Group 10 |
|---|--------------|--------------|--------------|--------------|---------------|
| Individual Access Line Residence (R1USS/11944) | \$8.20 | \$ 8.74 | \$ 8.74 | \$ 8.74 | \$ 8.74 |
| Business (B1USS/11917) | 19.45 | 21.00 | 23.00 | 24.50 | 24.50 |
| Business 24-Month Term** | 17.00 | 18.50 | 20.50 | 22.50 | 22.50 |
| Exchange Only Residence (M1X/75520) | 14.13 | 15.11 | 15.25 | 15.25 | 15.25 |
| Automatic Access Line (AALBUSS/75521) 24-Month Term** | 44.55 | 48.15 | 51.25 | 53.25 | 53.25 |
| Customer Owned Coin (PTAL/11939) | 13.98 | 15.03 | 16.03 | 17.08 | 18.09 |

| Rate Group 6 30,001-50,000 | Rate Group 7 50,001-100,000 | Rate Group 8 100,001-300,000 | Rate Group 9 300,001-1,000,000 | Rate Group 10 1,000,001-Over , |
|---|--|---|---|--|
| Barnesville Bluefield Dendron Dwight Grundy Hague Heathsville^B Kilmarnock Lawrenceville Montross^B Pocahontas South Brunswick | Boykins Capron Courtland Edom Emporia^B Famham Harrisonburg^{A, B} Ivor^B Keezletown^{A, B} Keysville King William Ladysmith^B Lively Mathews Oakwood Richlands Rocky Gap Tazewell^A Wakefield (C) | Amherst^B Appomattox^B Bridgewater^{A, B} Broadway^B Dawn Dayton^{A, B} Deltaville Disputanta Elkton^{A, B} Eppes Fork Grottoes^B Hinton Jewell Ridge King & Queen McGaheysville^{A, B} Raphine^B Saluda Tappahannock^B Weyers Cave^{A, B} | Allwood Bowling Green Chancellor^B Claremont Colonial Beach^A (C) Gladstone Hayes^{A, B} King George^{A, B} (C) Pamplin Port Royal^B Stony Creek | Arcola^{A, B} Chuckatuck Crittenden^{A, B} Dale City^{A, B} Dulles^{A, B} Dulles Metro^{A, B} Franklin^{A, B} (C) Gloucester^A Great Bridge^{A, B} Hanover Haymarket^{A, B} Hickory^{A, B} Holland Independent Hill^{A, B} Lorton^{A, B} Lorton Metro^{A, B} Manassas^{A, B} Nokesville^{A, B} Occoquan^{A, B} Old Church^A Princess Anne^{A, B} Smithfield^B Stafford^{A, B} Surry Triangle^{A, B} Windsor^B |

* Refer to 3.4.5

** Termination Liability language is specified in Section S3.4.4.1 of this Tariff.

Note A: Residential basic telephone services under the exchanges (in bold print) are Competitive and priced as indicated under Tariff 220.

Note B: Business basic telephone services under the exchanges (in bold print) are Competitive and priced as indicated under Tariff 220.

GENERAL CUSTOMER SERVICES TARIFF

VERIZON SOUTH INC.
VIRGINIA

Section 3
Sixteenth Revised Page 35
Cancels Fifteenth Revised Page 35
EFFECTIVE: August 16, 2010

ISSUED: July 2, 2010
BY: President
Richmond, Virginia

S3. BASIC LOCAL EXCHANGE SERVICE

S3.4 Optional Usage Sensitive Service (USS) (Continued)

S3.4.5 Usage Sensitive Service Rates (Continued)

a. Access Line Rates (Continued)

| GSEC/ IOSC | Rate Group | Individual Access Line | | Automatic Access Line (PBX Trunk) ² AALBUSS/ 75521 | Exchange Only Residence MIX/75520 | Customer Owned Coin PTAL/11939 |
|--|---------------|--|---|---|--|---|
| | | Residence R1USS/ 11944 | Business ² 1USS/ 11917 | | | |
| Chase City | 5 | \$ 7.78 | \$ 17.75 | \$ 41.00 | \$ 13.27 | \$ 12.99 |
| Chuckatuck | 10 | 8.74 | 24.50 | 53.25 | 15.25 | 18.09 |
| Claremont | 9 | 8.74 | 24.50 | 53.25 | 15.25 | 17.08 |
| Clarksville | 5 | 7.78 | 17.75 | 41.00 | 12.88 | 12.99 |
| Colonial Beach^A | 9 | 8.74 | 24.50 | 53.25 | 15.25 | 17.08 |
| Courtland | 7 | 8.74 | 21.00 | 48.15 | 14.66 | 15.03 |
| Crittenden^{A, B} | 10 | 8.74 | 24.50 | 53.25 | 15.25 | 18.09 |
| Dahlgren^{A, B} | 5 | 7.78 | 17.75 | 41.00 | 13.27 | 12.99 |
| Dale City^{A, B} (includes Hoadly) | 10 | 8.74 | 24.50 | 53.25 | 15.25 | 18.09 |
| Dawn | 8 | 8.74 | 23.00 | 51.25 | 15.25 | 16.03 |
| Dayton^{A, B} | 8 | 8.74 | 23.00 | 51.25 | 15.25 | 16.03 |
| Deltaville | 8 | 8.74 | 23.00 | 51.25 | 15.25 | 16.03 |
| Dendron | 6 | 8.20 | 19.45 | 44.55 | 14.13 | 13.98 |
| Disputanta ELS Adder ¹ | 8 | 8.74 .07 8.81 | 23.00 .19 23.19 | 51.25 .42 51.67 | 15.25 .12 15.37 | 16.03 .16 16.19 |
| Doswell^{A, B} | 4 | 7.26 | 16.25 | 37.40 | 12.37 | 11.98 |
| Drakes Branch | 5 | 7.78 | 17.75 | 41.00 | 13.27 | 12.99 |
| Dulles^{A, B} | 10 | (USS Not Applicable - Refer to Message Rate Service in Section S3.5) | | | | |
| Dulles Metro^{A, B} | 10 | (USS Not Applicable - Refer to Message Rate Service in Section S3.5) | | | | |
| Dwight | 6 | 8.20 | 19.45 | 44.55 | 14.13 | 13.98 |
| Edom | 7 | 8.74 | 21.00 | 48.15 | 15.11 | 15.03 |
| Elkton^{A, B} | 8 | 8.74 | 23.00 | 51.25 | 15.25 | 16.03 |
| Emporia^B | 7 | 8.74 | 21.00 | 48.15 | 15.11 | 15.03 |
| Eppes Fork | 8 | 8.74 | 23.00 | 51.25 | 15.25 | 16.03 |
| Famham | 7 | 8.74 | 21.00 | 48.15 | 15.11 | 15.03 |

Note 1: Disputanta Extended Local Service (ELS) Adder provides for unlimited calling to Verizon Virginia's Dinwiddie Exchange.

Note 2: Term Rates can be located on Pages 32 & 33.

Note A: Residential basic telephone services under the exchanges (in bold print) are Competitive and priced as indicated under Tariff 220.

Note B: Business basic telephone services under the exchanges (in bold print) are Competitive and priced as indicated under Tariff 220.

(C)

GENERAL CUSTOMER SERVICES TARIFF

VERIZON SOUTH INC.
VIRGINIA

Section 3
Seventeenth Revised Page 36
Cancels Sixteenth Revised Page 36
EFFECTIVE: August 16, 2010

ISSUED: July 2, 2010
BY: President
Richmond, Virginia

S3. BASIC LOCAL EXCHANGE SERVICE

S3.4 Optional Usage Sensitive Service (USS) (Continued)

S3.4.5 Usage Sensitive Service Rates (Continued)

a. Access Line Rates (Continued)

| GSEC/ IOSC | Rate Group | Individual Access Line | | Automatic Access Line (PBX Trunk) ¹ AALBUSS/ 75521 | Exchange Only Residence MIX/75520 | Customer Owned Coin PTAL/11939 | |
|---|---------------|------------------------------|---|---|--|---|-----|
| | | Residence R1USS/ 11944 | Business ¹ 1USS/ 11917 | | | | |
| Franklin ^{A, B} | 10 | \$ 8.74 | \$24.50 | \$53.25 | \$15.25 | \$18.09 | (C) |
| Gladstone | 9 | 8.74 | 24.50 | 53.25 | 15.25 | 17.08 | |
| Gloucester ^A | 10 | 8.74 | 24.50 | 53.25 | 15.25 | 18.09 | |
| Great Bridge ^{A, B} (includes Battlefield) | 10 | 8.74 | 24.50 | 53.25 | 15.25 | 18.09 | |
| Grottoes ^B | 8 | 8.74 | 23.00 | 51.25 | 15.25 | 16.03 | |
| Grundy | 6 | 8.20 | 19.45 | 44.55 | 14.13 | 13.98 | |
| Hague | 6 | 8.20 | 19.45 | 44.55 | 14.13 | 13.98 | |
| Hanover | 10 | 8.74 | 24.50 | 53.25 | 15.25 | 18.09 | |
| Harrisonburg ^{A, B} | 7 | 8.74 | 21.00 | 48.15 | 15.11 | 15.03 | |
| Hayes ^{A, B} | 9 | 8.74 | 24.50 | 53.25 | 15.25 | 17.08 | |
| Haymarket ^{A, B} | 10 | 8.74 | 24.50 | 53.25 | 15.25 | 18.09 | |
| Heathsville ^B | 6 | 8.20 | 19.45 | 44.55 | 14.13 | 13.98 | |
| Hickory ^{A, B} | 10 | 8.74 | 24.50 | 53.25 | 15.25 | 18.09 | |
| Hinton | 8 | 8.74 | 23.00 | 51.25 | 15.25 | 16.03 | |
| Holland | 10 | 8.74 | 24.50 | 53.25 | 15.25 | 18.09 | |
| Hurley | 5 | 7.78 | 17.75 | 41.00 | 13.27 | 12.99 | |
| Independent Hill ^{A, B} | 10 | 8.74 | 24.50 | 53.25 | 15.25 | 18.09 | |
| Irvington | 5 | 7.78 | 17.75 | 41.00 | 13.27 | 12.99 | |
| Ivor ^B | 7 | 8.74 | 21.00 | 48.15 | 15.11 | 15.03 | |
| Jarratt | 5 | 7.78 | 17.75 | 41.00 | 13.27 | 12.99 | |
| Jewell Ridge | 8 | 8.74 | 23.00 | 51.25 | 15.25 | 16.03 | |
| Keezletown ^{A, B} | 7 | 8.74 | 21.00 | 48.15 | 15.11 | 15.03 | |

Note ^A Residential basic telephone services under the exchanges (in bold print) are Competitive and priced as indicated under Tariff 220.
 Note ^B Business basic telephone services under the exchanges (in bold print) are Competitive and priced as indicated under Tariff 220.
 Note ¹ Term Rates can be located on Pages 32 & 33.

GENERAL CUSTOMER SERVICES TARIFF

VERIZON SOUTH INC.
VIRGINIA

Section 3
Fourteenth Revised Page 37
Cancels Thirteenth Revised Page 37
EFFECTIVE: August 16, 2010

ISSUED: July 2, 2010
BY: President
Richmond, Virginia

S3. BASIC LOCAL EXCHANGE SERVICE

S3.4 Optional Usage Sensitive Service (USS) (Continued)

S3.4.5 Usage Sensitive Service Rates (Continued)

a. Access Line Rates (Continued)

| GSEC/ IOSC | Rate Group | Individual Access Line | | Automatic Access Line (PBX Trunk) ¹ AALBUSS/ 75521 | Exchange Only Residence MIX/75520 | Customer Owned Coin PTAL/11939 |
|---|---|---------------------------|-----------------------|---|--|---|
| | | Residence | Business ¹ | | | |
| | | R1USS/ 11944 | 1USS/ 11917 | | | |
| Keysville | 7 | \$ 8.74 | \$21.00 | \$48.15 | \$ 15.11 | \$15.03 |
| Kilmarnock | 6 | 8.20 | 19.45 | 44.55 | 14.13 | 13.98 |
| King George ^{A, B} | 9 | 8.74 | 24.50 | 53.25 | 15.25 | 17.08 (C) |
| King & Queen | 8 | 8.74 | 23.00 | 51.25 | 15.25 | 16.03 |
| King William | 7 | 8.74 | 21.00 | 48.15 | 15.11 | 15.03 |
| Ladysmith ^B | 7 | 8.74 | 21.00 | 48.15 | 15.11 | 15.03 |
| Lawrenceville | 6 | 8.20 | 19.45 | 44.55 | 14.13 | 13.98 |
| Lively | 7 | 8.74 | 21.00 | 48.15 | 15.11 | 15.03 |
| Lorton ^{A, B} | 10 (USS Not Applicable - Refer to Message Rate Service in Section S3.5) | | | | | |
| Lorton Metro ^{A, B} | 10 (USS Not Applicable - Refer to Message Rate Service in Section S3.5) | | | | | |
| Manassas ^{A, B} | 10 | 8.74 | 24.50 | 53.25 | 15.25 | 18.09 |
| Mathews | 7 | 8.74 | 21.00 | 48.15 | 15.11 | 15.03 |
| Maxie | 5 | 7.78 | 17.75 | 41.00 | 13.27 | 12.99 |
| McGaheysville ^{A, B} | 8 | 8.74 | 23.00 | 51.25 | 15.25 | 16.03 |
| Montross ^B | 6 | 8.20 | 19.45 | 44.55 | 14.13 | 13.98 |
| Nokesville ^{A, B} | 10 | 8.74 | 24.50 | 53.25 | 15.25 | 18.09 |
| Oakwood | 7 | 8.74 | 21.00 | 48.15 | 15.11 | 15.03 |
| Occoquan ^{A, B} (includes Woodbridge) | 10 | 8.74 | 24.50 | 53.25 | 15.25 | 18.09 |
| Old Church ^A | 10 | 8.74 | 24.50 | 53.25 | 15.25 | 18.09 |
| Pamplin | 9 | 8.74 | 24.50 | 53.25 | 15.25 | 17.08 |
| Pocahontas | 6 | 8.20 | 19.45 | 44.55 | 14.13 | 13.98 |
| Port Royal ^B | 9 | 8.74 | 24.50 | 53.25 | 15.25 | 17.08 |
| Princess Anne ^{A, B} (includes Pungo and Shipp's Corner) | 10 | 8.74 | 24.50 | 53.25 | 15.25 | 18.09 |

Note ^A: Residential basic telephone services under the exchanges (in bold print) are Competitive and priced as indicated under Tariff 220.

Note ^B: Business basic telephone services under the exchanges (in bold print) are Competitive and priced as indicated under Tariff 220.

Note ¹: Term Rates can be located on Pages 32 & 33.

ISSUED: July 2, 2010
BY: President
Richmond, Virginia

S3. BASIC LOCAL EXCHANGE SERVICE

S3.4 Optional Usage Sensitive Service (USS) (Continued)

S3.4.5 Usage Sensitive Service Rates (Continued)

a. Access Line Rates (Continued)

| GSEC/ IOSC | Rate Group | Individual Access Line | | Automatic Access Line (PBX Trunk) ¹ AALBUSS/ 75521 | Exchange Only Residence MIX/75520 | Customer Owned Coin PTAL/11939 |
|---|---------------|-------------------------------|--------------------------------|---|--|---|
| | | Residence | Business ¹ | | | |
| | | R1USS/ 11944 | B1USS/ 11917 | | | |
| Raphine^B | 8 | \$ 8.74 | \$ 23.00 | \$ 51.25 | \$15.25 | \$16.03 |
| Reedville | 5 | 7.78 | 17.75 | 41.00 | 13.27 | 12.99 |
| Richlands ELS Adder | 7 | 8.74 <u>+01</u> 8.75 | 21.00 <u>+01</u> 21.01 | 48.15 <u>+01</u> 48.16 | 15.11 <u>+01</u> 15.12 | 15.03 <u>+01</u> 15.04 |
| Rocky Gap ELS Adder ³ | 7 | 8.74 <u>+1.26</u> 10.00 | 21.00 <u>+3.07</u> 24.07 | 48.15 <u>+6.78</u> 54.93 | 15.11 <u>+2.17</u> 17.28 | 15.03 <u>+2.59</u> 17.62 |
| Saluda | 8 | 8.74 | 23.00 | 51.25 | 15.25 | 16.03 |
| Smithfield^B | 10 | 8.74 | 24.50 | 53.25 | 15.25 | 18.09 |
| South Brunswick | 6 | 8.20 | 19.45 | 44.55 | 14.13 | 13.98 |
| Stafford^{A, B} | 10 | 8.74 | 24.50 | 53.25 | 15.25 | 18.09 |
| Stony Creek | 9 | 8.74 | 24.50 | 53.25 | 15.25 | 17.08 |
| Surry | 10 | 8.74 | 24.50 | 53.25 | 15.25 | 18.09 |
| Tappahannock^B | 8 | 8.74 | 23.00 | 51.25 | 15.25 | 16.03 |
| Tazewell^A | 7 | 8.74 | 21.00 | 48.15 | 15.11 | 15.03 (C) |
| Triangle^{A, B} (includes Quantico) | 10 | 8.74 | 24.50 | 53.25 | 15.25 | 18.09 |
| Wakefield | 7 | 8.74 | 21.00 | 48.15 | 15.11 | 15.03 |
| Warsaw | 5 | 7.78 | 17.75 | 41.00 | 13.27 | 12.99 |
| Weyers Cave^{A, B} | 8 | 8.74 | 23.00 | 51.25 | 15.25 | 16.03 |
| Windsor^B | 10 | 8.74 | 24.50 | 53.25 | 15.25 | 18.09 |

*** CROSS REFERENCE NOTES ***

- The USS Business Individual Access Line rate also applies to:
Customer Owned Coin and Coinless Operated Telephone Service
as specified in Section S7.1.4.
PTAL/11939
CEN NARSM/52149
 - The USS Automatic Access Line (PBX Trunk) rate also applies to:
Shared Tenant Service - Refer to Section S24.1.3
STSAALBUSS
CEN NARM/52120
CentraNet Service - NARS - Refer to Section S12.1.2
 - Rocky Gap Extended Local Service (ELS) Adder provides for unlimited calling to Embarq's Bland Exchange.
- Note A: Residential basic telephone services under the exchanges (in bold print) are Competitive and priced as indicated under Tariff 220.
Note B: Business basic telephone services under the exchanges (in bold print) are Competitive and priced as indicated under Tariff 220.
Note 1: Term Rates can be located on Pages 32 & 33.

GENERAL CUSTOMER SERVICES TARIFF

VERIZON SOUTH INC.
VIRGINIA

Section 3
Eleventh Revised Page 69
Cancels Tenth Revised Page 69
EFFECTIVE: August 16, 2010

ISSUED: July 2, 2010
BY: President
Richmond, Virginia

S3. BASIC LOCAL EXCHANGE SERVICE

S3.11 Verizon Local Calling Plan (Continued)

S3.11.3 Rates (Continued)

- b. Rate Schedule (Continued)
(1) Residence Individual Access Line

| | IOSC: | Basic Calling Plan 10679 | Community Plus Plan 21673 | Premium Plan 10669 |
|-----------------------------------|-------|-----------------------------------|------------------------------------|--------------------------|
| Alberta | | \$ 9.82 | \$ 15.94 | \$ 36.04 |
| Allwood | | 11.04 | 17.47 | - |
| Amherst (includes Sweet Briar) | | 11.04 | 17.18 | - |
| Appomattox | | 9.82 | 17.18 | - |
| Arcola^A | | - | - | - |
| Barnesville | | 8.58 | 14.72 | 36.04 |
| Big Prater | | 7.96 | 14.72 | 36.04 |
| Big Rock | | 7.96 | 14.72 | 36.04 |
| Bluefield | | 8.58 | 15.94 | 36.04 |
| Bowling Green | | 12.00 | 17.47 | 36.04 |
| Boydton | | 7.96 | 14.72 | 36.04 |
| Boykins | | 9.82 | 17.18 | 36.04 |
| Bridgewater^A | | - | - | - |
| Broadway | | - | - | - |
| Callao^B | | 7.96 | 15.94 | - |
| Capron | | 8.58 | 17.18 | - |
| Chancellor | | 11.04 | 17.47 | 36.04 |
| Charlotte Court House | | 7.96 | 14.72 | 36.04 |
| Chase City | | 7.96 | 14.72 | 36.04 |
| Chuckatuck | | 12.00 | 17.47 | 36.04 |
| Claremont | | 11.04 | 17.47 | 36.04 |
| Clarksville | | 7.96 | 14.72 | 36.04 |
| Colonial Beach^A | | 11.04 | 17.47 | 36.04 |

(C)

Note ^A: Residential basic telephone services under the exchanges (in bold print) are Competitive and priced as indicated under Tariff 220.

GENERAL CUSTOMER SERVICES TARIFF

VERIZON SOUTH INC.
VIRGINIA

Section 3
Fifteenth Revised Page 70
Cancels Fourteenth Revised Page 70
EFFECTIVE: August 16, 2010

ISSUED: July 2, 2010
BY: President
Richmond, Virginia

S3. BASIC LOCAL EXCHANGE SERVICE

S3.11 Verizon Local Calling Plan (Continued)

S3.11.3 Rates (Continued)

b. Rate Schedule (Continued)

(1) Residence Individual Access Line (Continued)

| | IOSC: | Basic Calling Plan | Community Plus Plan | Premium Plan |
|---|-------|------------------------------|------------------------------|------------------------------|
| | | 10679 | 21673 | 10669 |
| Courtland | | \$ 7.96 | \$ 15.94 | - |
| Crittenden^A | | 12.00 | 17.47 | 36.04 |
| Dahlgren^A | | 11.04 | 17.18 | 36.04 |
| Dale City^A (includes Hoadly) | | - | - | - |
| Dawn | | 12.00 | 17.47 | 36.04 |
| Dayton^A | | - | - | - |
| Deltaville | | 8.58 | 17.18 | - |
| Dendron | | 12.00 | 17.47 | 36.04 |
| Disputanta ELS Adder ¹ | | 12.00 .10 <u>12.10</u> | 17.47 .15 <u>17.62</u> | 36.04 .33 <u>36.37</u> |
| Doswell^A | | 12.00 | 17.47 | 36.04 |
| Drakes Branch | | 7.96 | 14.72 | 36.04 |
| Dulles^A | | - | - | - |
| Dulles Metro^A | | - | - | - |
| Dwight | | 8.58 | 15.94 | - |
| Edom | | - | - | - |
| Elkton^A | | - | - | - |
| Emporia | | 11.04 | 17.18 | 36.04 |
| Eppes Fork | | 9.82 | 17.18 | 36.04 |
| Farnham | | 8.58 | 15.94 | 36.04 |
| Franklin^A | | 12.00 | 17.47 | - |
| Gladstone | | 11.04 | 17.47 | 36.04 |
| Gloucester^A | | - | - | - |
| Great Bridge^A (includes Battlefield) | | - | - | - |

(C)

Note 1: Disputanta Extended Local Service (ELS) Adder provides for unlimited calling to Verizon Virginia's Dinwiddie Exchange.

Note A: Residential basic telephone services under the exchanges (in bold print) are Competitive and priced as indicated under Tariff 220.

GENERAL CUSTOMER SERVICES TARIFF

VERIZON SOUTH INC.
VIRGINIA

Section 3
Fifteenth Revised Page 71
Cancels Fourteenth Revised Page 71
EFFECTIVE: August 16, 2010

ISSUED: July 2, 2010
BY: President
Richmond, Virginia

S3. BASIC LOCAL EXCHANGE SERVICE

S3.11 Verizon Local Calling Plan (Continued)

S3.11.3 Rates (Continued)

b. Rate Schedule (Continued)

(1) Residence Individual Access Line (Continued)

| | IOSC: | Basic Calling Plan 10679 | Community Plus Plan 21673 | Premium Plan 10669 |
|-------------------------------------|-------|-----------------------------------|------------------------------------|--------------------------|
| Grottoes | | - | - | - |
| Grundy | | \$ 8.58 | \$ 17.18 | - |
| Hague | | 7.96 | 15.94 | - |
| Hanover | | 12.00 | 17.47 | 36.04 |
| Harrisonburg^A | | - | - | - |
| Hayes^A | | 12.00 | 17.47 | - |
| Haymarket^A | | - | - | - |
| Heathsville | | 7.96 | 15.94 | - |
| Hickory^A | | - | - | - |
| Hinton | | - | - | - |
| Holland | | 12.00 | 17.47 | - |
| Hurley | | 7.96 | 14.72 | 36.04 |
| Independent Hill^A | | - | - | - |
| Irvington | | 7.96 | 14.72 | 36.04 |
| Ivor | | 12.00 | 17.47 | 36.04 |
| Jarratt | | 9.82 | 15.94 | 36.04 |
| Jewell Ridge | | 8.58 | 17.18 | 36.04 |
| Keezletown^A | | - | - | - |
| Keysville | | 8.58 | 15.94 | 36.04 |
| Kilmarnock | | 7.96 | 15.94 | - |
| King George^A | | 11.04 | 17.47 | - |
| King & Queen | | 12.00 | 17.47 | 36.04 |
| King William | | 12.00 | 17.47 | 36.04 |

Note ^A: Residential basic telephone services under the exchanges (in bold print) are Competitive and priced as indicated under Tariff 220.

GENERAL CUSTOMER SERVICES TARIFF

VERIZON SOUTH INC.
VIRGINIA

Section 3
Thirteenth Revised Page 73
Cancels Twelfth Revised Page 73
EFFECTIVE: August 16, 2010

ISSUED: July 2, 2010
BY: President
Richmond, Virginia

S3. BASIC LOCAL EXCHANGE SERVICE

S3.11 Verizon Local Calling Plan (Continued)

S3.11.3 Rates (Continued)

- b. Rate Schedule (Continued)
(1) Residence Individual Access Line (Continued)

| | IOSC: | Basic Calling <u>Plan</u> 10679 | Community Plus <u>Plan</u> 21673 | Premium <u>Plan</u> 10669 | |
|--|-------|--|---|---------------------------------|-----|
| Saluda | | \$ 9.82 | \$ 17.18 | \$ - | |
| Smithfield | | 12.00 | 17.47 | - | |
| South Brunswick | | 7.96 | 15.94 | 36.04 | |
| Stafford^A | | - | - | - | |
| Stony Creek | | 11.04 | 17.47 | 36.04 | |
| Surry | | 11.65 | 17.47 | 36.04 | |
| Tappahannock | | 8.58 | 17.18 | - | |
| Tazewell^A | | 8.58 | 17.18 | - | (C) |
| Triangle^A (includes Quantico) | | - | - | - | |
| Wakefield | | 12.00 | 17.47 | 36.04 | |
| Warsaw | | 8.58 | 15.94 | 36.04 | |
| Weyers Cave^A | | - | - | - | |
| Windsor | | 12.00 (I) | 17.47 | - | |

Note ^A: Residential basic telephone services under the exchanges (in bold print) are Competitive and priced as indicated under Tariff 220.

COMPETITIVE PRICED LOCAL EXCHANGE SERVICES TARIFF - No. 220

VERIZON SOUTH INC.
VIRGINIA

ISSUED: July 2, 2010
BY: President
Richmond, Virginia

Section 1B
Sixth Revised Page 1
Cancels Fifth Revised Page 1
EFFECTIVE: August 16, 2010

EXCHANGE PRICES - RESIDENTIAL

Residential Dialtone Service Price (Per Month, usage indicated where applicable)

| <u>Exchange</u> | <u>Flat Rate (Unlimited)</u> | <u>Usage Sensitive Service¹ (US\$)</u> | <u>Exchange Only¹</u> | <u>Message Rate¹ (50 Call Allowance)</u> | <u>Message Rate¹ (No Call Allowance)</u> |
|------------------|----------------------------------|---|----------------------------------|---|---|
| Arcola | \$17.37 | \$9.48 | \$15.80 | - | - |
| Bridgewater* | | | | | |
| Colonial Beach* | | | | | (N) |
| Crittenden* | | | | | |
| Dahlgren* | | | | | |
| Dale City | \$17.37 | \$9.48 | \$15.80 | - | - |
| Dayton* | | | | | |
| Doswell* | | | | | |
| Dulles* | | | | | |
| Dulles Metro* | | | | | |
| Elkton* | | | | | |
| Franklin* | | | | | (N) |
| Gloucester | \$17.37 | \$9.48 | \$15.80 | - | - |
| Great Bridge | \$17.37 | \$9.48 | \$15.80 | - | - |
| Harrisonburg | | | | | |
| Haymarket | \$17.37 | \$9.48 | \$15.80 | - | - |
| Hayes | \$17.37 | \$9.48 | \$15.80 | - | - |
| Hickory | \$17.37 | \$9.48 | \$15.80 | - | - |
| Independent Hill | \$17.37 | \$9.48 | \$15.80 | - | - |
| Keezletown* | | | | | |
| King George* | | | | | (N) |
| Lorton | \$17.37 | \$9.48 | \$15.80 | \$11.90 | \$8.74 |
| Lorton Metro | \$17.37 | \$9.48 | \$15.80 | \$11.90 | \$8.74 |
| Manassas | \$17.37 | \$9.48 | \$15.80 | - | - |
| McGaheysville* | | | | | |
| Nokesville | \$17.37 | \$9.48 | \$15.80 | - | - |

(D)

Note 1: For Usage options and Charges see General Customer Services Tariff, Sections 3.4 and 3.5.

Note 2: Listed rates were previously found in General Customer Services Tariff, Sections 3.2, 3.4, and 3.5.

* For current rates, see General Customer Service Tariff, Sections 3.2 thru 3.5.

COMPETITIVE PRICED LOCAL EXCHANGE SERVICES TARIFF - No. 220

VERIZON SOUTH INC.
VIRGINIA

Section 1B
First Revised Page 1.1
Cancels Original Page 1.1
EFFECTIVE: August 16, 2010

ISSUED: July 2, 2010
BY: President
Richmond, Virginia

EXCHANGE PRICES - RESIDENTIAL

Residential Dialtone Service Price (Per Month, usage indicated where applicable)

| <u>Exchange</u> | <u>Flat Rate</u> <u>(Unlimited)</u> | <u>Usage Sensitive</u> <u>Service¹</u> <u>(US\$)</u> | <u>Exchange Only¹</u> | <u>Message Rate¹</u> <u>(50 Call</u> <u>Allowance)</u> | <u>Message Rate¹</u> <u>(No Call</u> <u>Allowance)</u> |
|-----------------|--|---|----------------------------------|---|---|
| Occoquan | \$17.37 | \$9.48 | \$15.80 | - | - |
| Old Church | \$17.37 | \$9.48 | \$15.80 | - | - |
| Princess Anne | \$17.37 | \$9.48 | \$15.80 | - | - |
| Stafford | \$17.37 | \$9.48 | \$15.80 | - | - |
| Tazewell* | | | | | (N) |
| Triangle* | | | | | (T) |
| Weyers Cave* | | | | | (T) |

(D)

Note 1: For Usage options and Charges see General Customer Services Tariff, Sections 3.4 and 3.5.

Note 2: Listed rates were previously found in General Customer Services Tariff, Sections 3.2, 3.4, and 3.5.

* For current rates, see General Customer Service Tariff, Sections 3.2 thru 3.5.

VERIZON SOUTH INC.
VIRGINIA

Section 1D
Fourth Revised Page 1
Cancels Third Revised Page 1
EFFECTIVE: August 16, 2010

ISSUED: July 2, 2010
BY: President
Richmond, Virginia

OPTIONAL LOCAL CALLING PLAN PRICES - RESIDENTIAL

Residential Dialtone Service Price (Per Month)

| Exchange | BASIC ¹ | COMMUNITY PLUS ¹ | PREMIUM | |
|---|--------------------|-----------------------------|---------|-----|
| (For current rates in listed exchanges, see General Customer Services Tariff, Section 3.11) | | | | |
| Arcola | | | | |
| Bridgewater | | | | |
| Colonial Beach | | | | (N) |
| Crittenden | | | | |
| Dahlgren | | | | |
| Dale City | | | | |
| Dayton | | | | |
| Doswell | | | | |
| Dulles | | | | |
| Dulles Metro | | | | |
| Elkton | | | | |
| Franklin | | | | (N) |
| Gloucester | | | | |
| Great Bridge | | | | |
| Harrisonburg | | | | |
| Haymarket | | | | |
| Hayes | | | | |
| Hickory | | | | |
| Independent Hill | | | | |
| Keezletown | | | | |
| King George | | | | (N) |
| Lorton | | | | |
| Lorton Metro | | | | |
| Manassas | | | | |
| McGaheysville | | | | |
| Nokesville | | | | |
| Occoquan | | | | |
| Old Church | | | | |
| Princess Anne | | | | |
| Stafford | | | | |
| Tazewell | | | | (N) |
| Triangle | | | | |
| Weyers Cave | | | | |

Note 1: For Usage options and Charges see General Customer Services Tariff, Section 3.11.