

Stephen C. Spencer
Director - Regulatory



703 E. Grace Street
Richmond, VA 23219

Phone 804 772-1585
Fax 804 772-3817
steve.spencer@verizon.com

July 2, 2009

Virginia State Corporation Commission
Communications Division
Mr. William Irby, Director
9th Floor, Tyler Building
1300 East Main Street
Richmond, VA 23219

STATE CORPORATION COMMISSION
RECEIVED

JUL 02 2009

DIVISION OF COMMUNICATIONS
RICHMOND, VA

Dear Mr. Irby,

Attached, in triplicate, for filing with your Honorable Commission are the following proposed Verizon South Inc. ("Verizon") tariff pages to become effective August 17, 2009.

VERIZON SOUTH INC.
GENERAL CUSTOMER SERVICES TARIFF

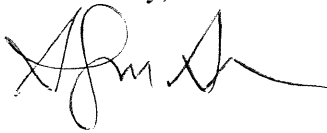
Section 3, Third Revised Page 1
Tenth Revised Page 4
Fifteenth Revised Page 5
Twelfth Revised Page 7
Twelfth Revised Page 8
Thirteenth Revised Page 10
Tenth Revised Page 32
Fifteenth Revised Page 33
Twelfth Revised Page 35
Eleventh Revised Page 36
Thirteenth Revised Page 38
Thirteenth Revised Page 70
Thirteenth Revised Page 71
Twelfth Revised Page 73
Ninth Revised Page 75
Ninth Revised Page 76
Eighth Revised Page 78

VERIZON SOUTH INC.
COMPETITIVE PRICED LOCAL EXCHANGE SERVICES TARIFF, S.C.C.-Va.-No. 220
Section 1B, Fourth Revised Page 1
Section 1C, Second Revised Page 1
Section 1D, Second Revised Page 1
Section 1E, Second Revised Page 1

In this filing are the proposed tariff pages deregulating the price of residential BLETs and business BLETs individual line service in the Dahlgren, Harrisonburg, Triangle and Weyers Cave exchanges. Supporting documentation for each exchange is attached.

If you have any questions or require additional information regarding this filing, please contact me.

Yours truly,

A handwritten signature in black ink, appearing to be 'APM', with a long horizontal flourish extending to the right.

cc: Katie Cummings

Attachments

GENERAL CUSTOMER SERVICES TARIFF

VERIZON SOUTH INC.
VIRGINIA

Section 3
Third Revised Page 1
Cancels Second Revised Page 1
EFFECTIVE: August 17, 2009

ISSUED: July 2, 2009
BY: President
Richmond, Virginia

S3. BASIC LOCAL EXCHANGE SERVICE

S3.1 General

- a. Local exchange service rates in this Tariff are furnished by Verizon South Inc., Virginia.
- b. Exchange area maps are filed with the Virginia State Corporation Commission.
- c. The rates for service not specifically shown in this section are presented in other sections of this Tariff.
- d. Local exchange service rates do not include the provision of a telephone set.
- e. Monthly local exchange service rates are authorized by the Virginia State Corporation Commission.
- f. Local exchange service is provided as one of the following:
 - Flat Rate Service
 - Local Calling Plan (LCP)
 - Message Rate Service (MRS)
 - Optional Usage Sensitive Service (USS)
- g. For rates applicable to exchanges declared Competitive pursuant to S.C.C. Order in Case No., PUC-2007-00008, see the Competitive Priced Local Exchange Services Tariff, S.C.C. -Va. -No. 220. (N)

S3.2 Flat Rate Service

S3.2.1 General

- a. Flat Rate Service is an exchange service which provides the "Exchange" customer with unlimited calling to his/her home exchange and to the "Additional Exchanges" listed in S3.2.4.
- b. Flat Rate Service is available to Residence and Business Individual Access Line, Automatic Access Line and ContraNet® customers.
- c. Flat Rate Service is applicable to the exchanges identified in Section S3.2.3 following. These same exchanges have the option of subscribing to Optional Usage Sensitive Service as specified in Section S3.4 of this Tariff.

S3.2.2 Exchange Classification and Rate Groups

- a. Exchanges are classified by Rate Groups and are placed within the Rate Group based on the total number of weighted switched access lines within the local calling area. Rate Groups are classified as follows:

Rate Group	Total Weighted Switched Access Lines
1	1 - 2,000
2	2,001 - 4,000
3	4,001 - 8,000
4	8,001 - 15,000
5	15,001 - 30,000
6	30,001 - 50,000
7	50,001 - 100,000
8	100,001 - 300,000
9	300,001 - 1,000,000
10	1,000,001 - Over
2G	All

GENERAL CUSTOMER SERVICES TARIFF

VERIZON SOUTH INC.
VIRGINIA

Section 3
Tenth Revised Page 4
Cancels Ninth Revised Page 4
EFFECTIVE: August 17, 2009

ISSUED: July 2, 2009
BY: President
Richmond, Virginia

S3. BASIC LOCAL EXCHANGE SERVICE

S3.2 Flat Rate Service (Continued)

S3.2.2 Exchange Classification and Rate Groups (Continued)

e. Rate Groups

	Rate Group 1	Rate Group 2	Rate Group 3	Rate Group 4	Rate Group 5
Individual Access Line					
Residence (R1/74864)	\$ 11.38	\$ 11.89	\$12.73	\$13.64	\$14.65
Business (B1/11135)	18.50	21.00	21.00	25.50	28.00
Business 24-Month Term*	17.00	20.00	20.00	23.50	26.00
Automatic Access Line					
PBX Trunk	38.00	43.50	43.50	51.00	56.00
1-10 Lines					
(AALB/11823)					
24-Month Term*	35.00	40.00	40.00	47.00	52.00
11+ Lines	32.50	37.00	37.00	43.50	47.50
(AALB11+/10280)					
24-Month Term*	30.00	35.00	35.00	39.50	43.50

Rate Group 1	Rate Group 2	Rate Group 3	Rate Group 4	Rate Group 5
1-2,000	2,001-4,000	4,001-8,000	8,001-15,000	15,001-30,000
			Alberta Doswell	Big Prater Big Rock Boydton Callao Charlotte Court House Chase City Clarksville Dahlgren^{A, B} (C) Drakes Branch Hurley Irvington Jarratt Maxie Reedville Warsaw

Note ^A: Residential basic telephone services under the exchanges (in bold print) are Competitive and priced as indicated under Tariff 220. (N)
Note ^B: Business basic telephone services under the exchanges (in bold print) are Competitive and priced as indicated under Tariff 220. (N)

* Termination Liability language is specified in Section S3.4.4.1 of this Tariff.

GENERAL CUSTOMER SERVICES TARIFF

VERIZON SOUTH INC.
VIRGINIA

Section 3
Fifteenth Revised Page 5
Cancels Fourteenth Revised Page 5
EFFECTIVE: August 17, 2009

ISSUED: July 2, 2009
BY: President
Richmond, Virginia

S3. BASIC LOCAL EXCHANGE SERVICE

S3.2 Flat Rate Service (Continued)

S3.2.2 Exchange Classification and Rate Groups (Continued)

e. Rate Groups (Continued)

	Rate Group 6	Rate Group 7	Rate Group 8	Rate Group 9	Rate Group 10
Individual Access Line					
Residence (R1/74864)	\$15.59	\$16.71	\$16.87	\$16.87	\$16.87
Business (B1/11135)	30.00	33.00	35.00	37.00	37.00
Business 24-Month Term**	28.00	31.00	33.00	35.00	35.00
Automatic Access Line					
PBX Trunk	60.50	65.00	70.00	74.50	74.50
1-10 Lines (AALB/11823)					
24-Month Term**	56.50	61.00	66.00	70.50	70.50
11+ Lines (AALB11+/10280)	51.50	55.50	59.50	63.50	63.50
24-Month Term**	47.50	51.50	55.50	59.50	59.50

Rate Group 6 30,001-50,000	Rate Group 7 50,001-100,000	Rate Group 8 100,001-300,000	Rate Group 9 300,001-1,000,000	Rate Group 10 1,000,001-Over
Barnesville	Boykins	Amherst	Allwood	Arcola ^A
Bluefield	Capron	Appomattox	Bowling Green	Chuckatuck
Dendron	Courtland	Bridgewater	Chancellor	Crittenden
Dwight	Edom	Broadway	Claremont	Dale City ^A
Grundy	Emporia	Dawn	Colonial Beach	Dulles
Hague	Farnham	Dayton	Gladstone	Dulles Metro
Heathsville	Harrisonburg^{A,B} (C)	Deltaville	Hayes^A	Franklin
Kilmarnock	Ivor	Disputanta	King George	Gloucester ^A
Lawrenceville	Keezletown	Elkton	Pamplin	Great Bridge^{A,B}
Montross	Keysville	Eppes Fork	Port Royal	Hanover
Pocahontas	King William	Grottoes	Stony Creek	Haymarket^A
South Brunswick	Ladysmith	Hinton		Hickory^A
	Lively	Jewell Ridge		Holland
	Mathews	King & Queen		Independent Hill^A
	Oakwood	McGaheysville		Lorton ^A
	Richlands	Raphine		Lorton Metro^A
	Rocky Gap	Saluda		Manassas ^A
	Tazewell	Tappahannock		Nokesville ^A
	Wakefield	Weyers Cave^{A,B} (C)		Occoquan ^A
				Old Church ^A
				Princess Anne^{A,B}
				Smithfield
				Stafford^A
				Surry
				Triangle^{A,B} (C)
				Windsor

*Refer to 3.2.3

Note A: Residential basic telephone services under the exchanges (in bold print) are Competitive and priced as indicated under Tariff 220.

Note B: Business basic telephone services under the exchanges (in bold print) are Competitive and priced as indicated under Tariff 220.

** Termination Liability language is specified in Section S3.4.4.1 of this Tariff.

GENERAL CUSTOMER SERVICES TARIFF

VERIZON SOUTH INC.
VIRGINIA

Section 3
Twelfth Revised Page 7
Cancels Eleventh Revised Page 7
EFFECTIVE: August 17, 2009

ISSUED: July 2, 2009
BY: President
Richmond, Virginia

S3. BASIC LOCAL EXCHANGE SERVICE

S3.2 Flat Rate Service (Continued)

S3.2.3 Rates (Continued)

GSEC/IOSC:	Rate Group	Individual Access Line		Automatic Access Line (PBX Trunk)	
		Residence R1/74864	Business ³ B1/11135	1-10 Lines ³ AALB/11823	11+ Lines ³ AALB11+/10280
Callao	5	\$ 14.65	\$ 28.00	\$ 56.00	\$ 47.50
Capron	7	16.17	33.00	65.00	55.50
Chancellor	9	16.87	37.00	74.50	63.50
Charlotte Court House	5	14.65	28.00	56.00	47.50
Chase City	5	14.65	28.00	56.00	47.50
Chuckatuck	10	16.87	37.00	74.50	63.50
Claremont	9	16.87	37.00	74.50	63.50
Clarksville	5	14.65	28.00	56.00	47.50
Colonial Beach	9	16.87	37.00	74.50	63.50
Courtland	7	16.71	33.00	65.00	55.50
Crittenden	10	16.87	37.00	74.50	63.50
Dahlgren^{A, B}	5	14.65	28.00	56.00	47.50
Dale City^A (includes Hoadly)	10	16.87	37.00	74.50	63.50
Dawn	8	16.87	35.00	70.00	59.50
Dayton	8	16.87	35.00	70.00	59.50
Deltaville	8	16.87	35.00	70.00	59.50
Dendron	6	15.59	30.00	60.50	51.50
Disputanta ELS Adder ²	8	16.87 .13 <u>17.00</u>	35.00 .30 <u>35.30</u>	70.00 .60 <u>70.60</u>	59.50 .51 <u>60.01</u>
Doswell	4	13.64	25.50	51.00	43.50
Drakes Branch	5	14.65	28.00	56.00	47.50
Dulles ¹	10	16.87	37.00	74.50	63.50

(C)

Note 1: Dulles customers can choose Flat Rate Service or Message Rate Service. Refer to Section S3.5.2 for Message Rate Service options.

Note 2: Disputanta Extended Local Service (ELS) Adder provides for unlimited calling to Verizon Virginia's Dinwiddie Exchange.

Note 3: Term Rates can be located on Pages 4 & 5.

Note A: Residential basic telephone services under the exchanges (in bold print) are Competitive and priced as indicated under Tariff 220.

Note B: Business basic telephone services under the exchanges (in bold print) are Competitive and priced as indicated under Tariff 220.

(N)

GENERAL CUSTOMER SERVICES TARIFF

VERIZON SOUTH INC.
VIRGINIA

Section 3
Twelfth Revised Page 8
Cancels Eleventh Revised Page 8
EFFECTIVE: August 17, 2009

ISSUED: July 2, 2009
BY: President
Richmond, Virginia

S3. BASIC LOCAL EXCHANGE SERVICE

S3.2 Flat Rate Service (Continued)

S3.2.3 Rates (Continued)

	Rate Group	Individual Access Line		Automatic Access Line (PBX Trunk)	
		Residence	Business ¹	1-10 Lines ¹	11+ Lines ¹
		R1/74864	B1/11135	AALB/11823	AALB11+/10280
Edom	7	\$ 16.71	\$ 33.00	\$ 65.00	\$ 55.50
Elkton	8	16.87	35.00	70.00	59.50
Emporia	7	16.71	33.00	65.00	55.50
Eppes Fork	8	16.87	35.00	70.00	59.50
Farnham	7	16.71	33.00	65.00	55.50
Franklin	10	16.87	37.00	74.50	63.50
Gladstone	9	16.87	37.00	74.50	63.50
Gloucester ^A	10	16.87	37.00	74.50	63.50
Great Bridge ^{A, B} (includes Battlefield)	10	16.87	37.00	74.50	63.50
Grottoes	8	16.87	35.00	70.00	59.50
Grundy	6	15.59	30.00	60.50	51.50
Hague	6	15.59	30.00	60.50	51.50
Hanover	10	16.87	37.00	74.50	63.50
Harrisonburg ^{A, B}	7	16.71	33.00	65.00	55.50
Hayes ^A	9	16.87	37.00	74.50	63.50
Haymarket ^A	10	16.87	37.00	74.50	63.50
Heathsville	6	15.59	30.00	60.50	51.50
Hickory ^A	10	16.87	37.00	74.50	63.50

(C)

Note ^A: Residential basic telephone services under the exchanges (in bold print) are Competitive and priced as indicated under Tariff 220.
 Note ^B: Business basic telephone services under the exchanges (in bold print) are Competitive and priced as indicated under Tariff 220.
 Note 1: Term Rates can be located on Pages 4 & 5.

GENERAL CUSTOMER SERVICES TARIFF

VERIZON SOUTH INC.
VIRGINIA

Section 3
Thirteenth Revised Page 10
Cancels Twelfth Revised Page 10
EFFECTIVE: August 17, 2009

ISSUED: July 2, 2009
BY: President
Richmond, Virginia

S3. BASIC LOCAL EXCHANGE SERVICE

S3.2 Flat Rate Service (Continued)

S3.2.3 Rates (Continued)

GSEC/IOSC:	Rate Group	Individual Access Automatic Access Line				
		Line		(PBX Trunk)		
		Residence R1/74864	Business ³ B1/11135	1-10 Lines ³ AALB\11823	11+ Lines ³ AALB11+/10280	
Raphine	8	\$ 16.87	\$ 35.00	\$ 70.00	\$ 59.50	
Reedville	5	14.65	28.00	56.00	47.50	
Richlands	7	16.71	33.00	65.00	55.50	
ELS Adder ¹		+ .02	+ .03	.03	+ .03	
		16.73	33.03	65.03	55.53	
Rocky Gap	7	16.71	33.00	65.00	55.50	
ELS Adder ²		+2.40	+4.83	+9.81	+8.32	
		19.11	37.83	74.81	63.82	
Saluda	8	16.87	35.00	70.00	59.50	
Smithfield	10	16.87	37.00	74.50	63.50	
South Brunswick	6	15.59	30.00	60.50	51.50	
Stafford^A	10	16.87	37.00	74.50	63.50	
Stony Creek	9	16.87	37.00	74.50	63.50	
Surry	10	16.87	37.00	74.50	63.50	
Tappahannock	8	16.87	35.00	70.00	59.50	
Tazewell	7	16.71	33.00	65.00	55.50	
Triangle^{A, B} (includes Quantico)	10	16.87	37.00	74.50	63.50	(C)
Wakefield	7	16.71	33.00	65.00	55.50	
Warsaw	5	14.65	28.00	56.00	47.50	
Weyers Cave^{A, B}	8	16.87	35.00	70.00	59.50	(C)
Windsor	10	16.87	37.00	74.50	63.50	

Note ¹ Richlands Extended Local Service (ELS) Adder provides for unlimited calling to Verizon Virginia's Haysi Exchange.

Note ² Rocky Gap Extended Local Service (ELS) Adder provides for unlimited calling to Embarq's Bland Exchange.

Note ³ Term Rates can be located on Pages 4 & 5.

Note ^A: Residential basic telephone services under the exchanges (in bold print) are Competitive and priced as indicated under Tariff 220.

Note ^B: Business basic telephone services under the exchanges (in bold print) are Competitive and priced as indicated under Tariff 220

(N)

GENERAL CUSTOMER SERVICES TARIFF

VERIZON SOUTH INC.
VIRGINIA

Section 3
Tenth Revised Page 32
Cancels Ninth Revised Page 32
EFFECTIVE: August 17, 2009

ISSUED: July 2, 2009
BY: President
Richmond, Virginia

S3. BASIC LOCAL EXCHANGE SERVICE

S3.4 Optional Usage Sensitive Service (USS) (Continued)

S3.4.5 Usage Sensitive Service Rates

- a. Access Line Rates a monthly charge for the provision of incoming calls and access to the local network.

Refer to Section S2.6 for rules and regulations pertaining to the movement of exchanges to a different Rate Group.

	Rate Group 1	Rate Group 2	Rate Group 3	Rate Group 4	Rate Group 5
Individual Access Line Residence (R1USS/11944)	\$6.13	\$ 6.39	\$ 6.81	\$ 7.26	\$7.78
Business (B1USS/11917)	11.00	12.75	14.50	16.00	17.50
Business 24-Month Term*	9.50	10.75	12.50	14.00	15.50
Exchange Only Residence (M1X/75520)	10.32	10.77	11.53	12.37	13.27
Automatic Access Line (AALBUSS/75521)	26.50	30.00	33.00	36.50	40.00
24-Month Term*	23.50	27.00	30.00	33.50	37.00
Customer Owned Coin (PTAL/11939)	8.89	9.93	10.94	11.98	12.99

Rate Group 1	Rate Group 2	Rate Group 3	Rate Group 4	Rate Group 5
1-2,000	2,001-4,000	4,001-8,000	8,001-15,000	15,001-30,000
			Alberta Doswell	Big Prater Big Rock Boydton Callao Charlotte Court House Chase City Clarksville Dahlgren ^{A, B} (C) Drakes Branch Hurley Irvington Jarratt Maxie Reedville Warsaw

* Termination Liability language is specified in Section S3.4.4.1 of this Tariff.

Note A: Residential basic telephone services under the exchanges (in bold print) are Competitive and priced as indicated under Tariff 220. (N)

Note B: Business basic telephone services under the exchanges (in bold print) are Competitive and priced as indicated under Tariff 220. (N)

GENERAL CUSTOMER SERVICES TARIFF

VERIZON SOUTH INC.
VIRGINIA

Section 3
Fifteenth Revised Page 33
Cancels Fourteenth Revised Page 33
EFFECTIVE: August 17, 2009

ISSUED: July 2, 2009
BY: President
Richmond, Virginia

S3. BASIC LOCAL EXCHANGE SERVICE

S3.4 Optional Usage Sensitive Service (USS) (Continued)

S3.4.5 Usage Sensitive Service Rates (Continued)

a. Access Line Rates (Continued)

	Rate Group 6	Rate Group 7	Rate Group 8	Rate Group 9	Rate Group 10
Individual Access Line Residence (R1USS/11944)	\$8.20	\$ 8.74	\$ 8.74	\$ 8.74	\$ 8.74
Business (B1USS/11917)	19.00	20.50	22.50	24.00	24.00
Business 24-Month Term**	17.00	18.50	20.50	22.50	22.50
Exchange Only Residence (M1X/75520)	14.13	15.11	15.25	15.25	15.25
Automatic Access Line (AALBUSS/75521)	43.50	47.00	50.00	52.00	52.00
24-Month Term**	40.50	44.00	47.00	49.00	49.00
Customer Owned Coin (PTAL/11939)	13.98	15.03	16.03	17.08	18.09

Rate Group 6 30,001-50,000	Rate Group 7 50,001-100,000	Rate Group 8 100,001-300,000	Rate Group 9 300,001-1,000,000	Rate Group 10 1,000,001-Over
Barnesville Bluefield Dendron Dwight Grundy Hague Heathsville Kilmarnock Lawrenceville Montross Pocahontas South Brunswick	Boykins Capron Courtland Edom Emporia Farnham Harrisonburg ^{A, B} (C) Ivor Keezletown Keysville King William Ladysmith Lively Mathews Oakwood Richlands Rocky Gap Tazewell Wakefield	Amherst Appomattox Bridgewater Broadway Dawn Dayton Deltaville Disputanta Elkton Eppes Fork Grottoes Hinton Jewell Ridge King & Queen McGaheysville Raphine Saluda Tappahannock Weyers Cave ^{A, B} (C)	Allwood Bowling Green Chancellor Claremont Colonial Beach Gladstone Hayes ^A King George Pamplin Port Royal Stony Creek	Arcola ^{A, A} Chuckatuck Crittenden Dale City ^A Dulles Dulles Metro Franklin Gloucester ^A Great Bridge ^{A, B} Hanover Haymarket ^A Hickory ^A Holland Independent Hill ^A Lorton ^A Lorton Metro ^A Manassas ^A Nokesville ^A Occoquan ^A Old Church ^A Princess Anne ^{A, B} Smithfield Stafford ^A Surry Triangle ^{A, B} (C) Windsor

* Refer to 3.4.5

** Termination Liability language is specified in Section S3.4.4.1 of this Tariff.

Note ^A: Residential basic telephone services under the exchanges (in bold print) are Competitive and priced as indicated under Tariff 220.

Note ^B: Business basic telephone services under the exchanges (in bold print) are Competitive and priced as indicated under Tariff 220.

GENERAL CUSTOMER SERVICES TARIFF

VERIZON SOUTH INC.
VIRGINIA

Section 3
Twelfth Revised Page 35
Cancels Eleventh Revised Page 35
EFFECTIVE: August 17, 2009

ISSUED: July 2, 2009
BY: President
Richmond, Virginia

S3. BASIC LOCAL EXCHANGE SERVICE

S3.4 Optional Usage Sensitive Service (USS) (Continued)

S3.4.5 Usage Sensitive Service Rates (Continued)

a. Access Line Rates (Continued)

	Rate Group	Individual Access Line		Automatic Access Line (PBX Trunk) ² AALBUSS/ 75521	Exchange Only Residence MIX/75520	Customer Owned Coin PTAL/11939
		Residence R1USS/ 11944	Business ² 1USS/ 11917			
GSEC/ IOSC						
Chase City	5	\$ 7.78	\$ 17.50	\$ 40.00	\$ 13.27	\$ 12.99
Chuckatuck	10	8.74	24.00	52.00	15.25	18.09
Claremont	9	8.74	24.00	52.00	15.25	17.08
Clarksville	5	7.78	17.50	40.00	12.88	12.99
Colonial Beach	9	8.74	24.00	52.00	15.25	17.08
Courtland	7	8.74	20.50	47.00	14.66	15.03
Crittenden	10	8.74	24.00	52.00	15.25	18.09
Dahlgren^{A, B}	5	7.78	17.50	40.00	13.27	12.99
Dale City^A (includes Hoadly)	10	8.74	24.00	52.00	15.25	18.09
Dawn	8	8.74	22.50	50.00	15.25	16.03
Dayton	8	8.74	22.50	50.00	15.25	16.03
Deltaville	8	8.74	22.50	50.00	15.25	16.03
Dendron	6	8.20	19.00	43.50	14.13	13.98
Disputanta ELS Adder ¹	8	8.74 .07 <u>8.81</u>	22.50 .19 <u>22.69</u>	50.00 .42 <u>50.42</u>	15.25 .12 <u>15.37</u>	16.03 .16 <u>16.19</u>
Doswell	4	7.26	16.00	36.50	12.37	11.98
Drakes Branch	5	7.78	17.50	40.00	13.27	12.99
Dulles	10	(USS Not Applicable - Refer to Message Rate Service in Section S3.5)				
Dulles Metro	10	(USS Not Applicable - Refer to Message Rate Service in Section S3.5)				
Dwight	6	8.20	19.00	43.50	14.13	13.98
Edom	7	8.74	20.50	47.00	15.11	15.03
Elkton	8	8.74	22.50	50.00	15.25	16.03
Emporia	7	8.74	20.50	47.00	15.11	15.03
Eppes Fork	8	8.74	22.50	50.00	15.25	16.03
Farnham	7	8.74	20.50	47.00	15.11	15.03

(C)

Note 1: Disputanta Extended Local Service (ELS) Adder provides for unlimited calling to Verizon Virginia's Dinwiddie Exchange.

Note 2: Term Rates can be located on Pages 32 & 33.

Note ^A: Residential basic telephone services under the exchanges (in bold print) are Competitive and priced as indicated under Tariff 220.

Note ^B: Business basic telephone services under the exchanges (in bold print) are Competitive and priced as indicated under Tariff 220.

(N)

GENERAL CUSTOMER SERVICES TARIFF

VERIZON SOUTH INC.
VIRGINIA

Section 3
Eleventh Revised Page 36
Cancels Tenth Revised Page 36
EFFECTIVE: August 17, 2009

ISSUED: July 2, 2009
BY: President
Richmond, Virginia

S3. BASIC LOCAL EXCHANGE SERVICE

S3.4 Optional Usage Sensitive Service (USS) (Continued)

S3.4.5 Usage Sensitive Service Rates (Continued)

a. Access Line Rates (Continued)

	Rate Group	Individual Access Line		Automatic Access Line (PBX Trunk) ¹ AALBUSS/ 75521	Exchange Only Residence MIX/75520	Customer Owned Coin PTAL/11939
		Residence R1USS/ 11944	Business ¹ 1USS/ 11917			
GSEC/ IOSC						
Franklin	10	\$ 8.74	\$24.00	\$52.00	\$15.25	\$18.09
Gladstone	9	8.74	24.00	52.00	15.25	17.08
Gloucester^A	10	8.74	24.00	52.00	15.25	18.09
Great Bridge^{A, B} (includes Battlefield)	10	8.74	24.00	52.00	15.25	18.09
Grottoes	8	8.74	22.50	50.00	15.25	16.03
Grundy	6	8.20	19.00	43.50	14.13	13.98
Hague	6	8.20	19.00	43.50	14.13	13.98
Hanover	10	8.74	24.00	52.00	15.25	18.09
Harrisonburg^{A, B}	7	8.74	20.50	47.00	15.11	15.03
Hayes^A	9	8.74	24.00	52.00	15.25	17.08
Haymarket^A	10	8.74	24.00	52.00	15.25	18.09
Heathsville	6	8.20	19.00	43.50	14.13	13.98
Hickory^A	10	8.74	24.00	52.00	15.25	18.09
Hinton	8	8.74	22.50	50.00	15.25	16.03
Holland	10	8.74	24.00	52.00	15.25	18.09
Hurley	5	7.78	17.50	40.00	13.27	12.99
Independent Hill^A	10	8.74	24.00	52.00	15.25	18.09
Irvington	5	7.78	17.50	40.00	13.27	12.99
Ivor	7	8.74	20.50	47.00	15.11	15.03
Jarratt	5	7.78	17.50	40.00	13.27	12.99
Jewell Ridge	8	8.74	22.50	50.00	15.25	16.03
Keezletown	7	8.74	20.50	47.00	15.11	15.03

(C)

Note ^A Residential basic telephone services under the exchanges (in bold print) are Competitive and priced as indicated under Tariff 220.
 Note ^B Business basic telephone services under the exchanges (in bold print) are Competitive and priced as indicated under Tariff 220.
 Note ¹ Term Rates can be located on Pages 32 & 33.

GENERAL CUSTOMER SERVICES TARIFF

VERISON SOUTH INC.
VIRGINIA

Section 3
Thirteenth Revised Page 38
Cancels Twelfth Revised Page 38
EFFECTIVE: August 17, 2009

ISSUED: July 2, 2009
BY: President
Richmond, Virginia

S3. BASIC LOCAL EXCHANGE SERVICE

S3.4 Optional Usage Sensitive Service (USS) (Continued)
S3.4.5 Usage Sensitive Service Rates (Continued)

a. Access Line Rates (Continued)

	Rate Group	Individual Access Line		Automatic Access Line (PBX Trunk) 1 AALBUSS/ 75521	Exchange Only Residence MIX/75520	Customer Owned Coin PTAL/11939	
		Residence R1USS/ 11944	Business1 B1USS/ 11917				
Raphine	8	\$ 8.74	\$22.50	\$50.00 (I)	\$15.25	\$16.03	
Reedville	5	7.78	17.50	40.00	13.27	12.99	
Richlands	7	8.74 (I)	20.50	47.00	15.11	15.03	
ELS Adder		+01	+01	+01	+01	+01	
		8.75 (I)	20.51	47.01 (I)	15.12	15.04	
Rocky Gap	7	8.74	20.50	47.00 (I)	15.11	15.03	
ELS Adder ³		+1.26	+3.07	+6.78	+2.17	+2.59	
		10.00	23.57	53.78 (I)	17.28	17.62	
Saluda	8	8.74	22.50	50.00	15.25	16.03	
Smithfield	10	8.74	24.00	52.00	15.25	18.09	
South Brunswick	6	8.20	19.00	43.50	14.13	13.98	
Stafford^A	10	8.74	24.00	52.00	15.25	18.09	
Stony Creek	9	8.74	24.00	52.00	15.25	17.08	
Surry	10	8.74	24.00	52.00	15.25	18.09	
Tappahannock	8	8.74	22.50	50.00	15.25	16.03	
Tazewell	7	8.74	20.50	47.00	15.11	15.03	
Triangle^{A, B} (includes Quantico)	10	8.74	24.00	52.00	15.25	18.09	(C)
Wakefield	7	8.74	20.50	47.00	15.11	15.03	
Warsaw	5	7.78	17.50	40.00	13.27	12.99	
Weyers Cave^{A, B}	8	8.74	22.50	50.00	15.25	16.03	(C)
Windsor	10	8.74	24.00	52.00	15.25	18.09	

*** CROSS REFERENCE NOTES ***

- The USS Business Individual Access Line rate also applies to:
Customer Owned Coin and Coinless Operated Telephone Service
as specified in Section S7.1.4.
PTAL/11939
CEN NARSM/52149
- The USS Automatic Access Line (PBX Trunk) rate also applies to:
Shared Tenant Service - Refer to Section S24.1.3
STSAALBUSS
CEN NARM/52120
- Rocky Gap Extended Local Service (ELS) Adder provides for unlimited calling to Embarq's Bland Exchange.

Note ^A: Residential basic telephone services under the exchanges (in bold print) are Competitive and priced as indicated under Tariff 220.

Note ^B: Business basic telephone services under the exchanges (in bold print) are Competitive and priced as indicated under Tariff 220.

Note ¹: Term Rates can be located on Pages 32 & 33.

(N)

GENERAL CUSTOMER SERVICES TARIFF

VERIZON SOUTH INC.
VIRGINIA

Section 3
Thirteenth Revised Page 70
Cancels Twelfth Revised Page 70
EFFECTIVE: August 17, 2009

ISSUED: July 2, 2009
BY: President
Richmond, Virginia

S3. BASIC LOCAL EXCHANGE SERVICE

S3.11 Verizon Local Calling Plan (Continued)

S3.11.3 Rates (Continued)

b. Rate Schedule (Continued)

(1) Residence Individual Access Line (Continued)

	IOSC:	Basic Calling Plan 10679	Community Plus Plan 21673	Premium Plan 10669
Courtland		\$ 7.96	\$ 15.94	-
Crittenden		12.00	17.47	36.04
Dahlgren^A		11.04	17.18	36.04
Dale City^A (includes Hoadly)		-	-	-
Dawn		12.00	17.47	36.04
Dayton		-	-	-
Deltaville		8.58	17.18	-
Dendron		12.00	17.47	36.04
Disputanta ELS Adder ¹		12.00 .10 <u>12.10</u>	17.47 .15 <u>17.62</u>	36.04 .33 <u>36.37</u>
Doswell		12.00	17.47	36.04
Drakes Branch		7.96	14.72	36.04
Dulles		-	-	-
Dulles Metro		-	-	-
Dwight		8.58	15.94	-
Edom		-	-	-
Elkton		-	-	-
Emporia		11.04	17.18	36.04
Eppes Fork		9.82	17.18	36.04
Farnham		8.58	15.94	36.04
Franklin		12.00	17.47	-
Gladstone		11.04	17.47	36.04
Gloucester^A		-	-	-
Great Bridge^A (includes Battlefield)		-	-	-

(C)

Note 1: Disputanta Extended Local Service (ELS) Adder provides for unlimited calling to Verizon Virginia's Dinwiddie Exchange.

Note A: Residential basic telephone services under the exchanges (in bold print) are Competitive and priced as indicated under Tariff 220.

GENERAL CUSTOMER SERVICES TARIFF

VERIZON SOUTH INC.
VIRGINIA

Section 3
Thirteenth Revised Page 71
Cancels Twelfth Revised Page 71
EFFECTIVE: August 17, 2009

ISSUED: July 2, 2009
BY: President
Richmond, Virginia

S3. BASIC LOCAL EXCHANGE SERVICE

S3.11 Verizon Local Calling Plan (Continued)

S3.11.3 Rates (Continued)

b. Rate Schedule (Continued)

(1) Residence Individual Access Line (Continued)

	IOSC:	Basic Calling <u>Plan</u> 10679	Community Plus <u>Plan</u> 21673	Premium <u>Plan</u> 10669
Grottoes		-	-	-
Grundy		\$ 8.58	\$ 17.18	-
Hague		7.96	15.94	-
Hanover		12.00	17.47	36.04
Harrisonburg^A		-	-	-
Hayes^A		12.00	17.47	-
Haymarket^A		-	-	-
Heathsville		7.96	15.94	-
Hickory^A		-	-	-
Hinton		-	-	-
Holland		12.00	17.47	-
Hurley		7.96	14.72	36.04
Independent Hill^A		-	-	-
Irvington		7.96	14.72	36.04
Ivor		12.00	17.47	36.04
Jarratt		9.82	15.94	36.04
Jewell Ridge		8.58	17.18	36.04
Keezletown		-	-	-
Keysville		8.58	15.94	36.04
Kilmarnock		7.96	15.94	-
King George		11.04	17.47	-
King & Queen		12.00	17.47	36.04
King William		12.00	17.47	36.04

(C)

Note ^A: Residential basic telephone services under the exchanges (in bold print) are Competitive and priced as indicated under Tariff 220.

GENERAL CUSTOMER SERVICES TARIFF

VERIZON SOUTH INC.
VIRGINIA

Section 3
Twelfth Revised Page 73
Cancels Eleventh Revised Page 73
EFFECTIVE: August 17, 2009

ISSUED: July 2, 2009
BY: President
Richmond, Virginia

S3. BASIC LOCAL EXCHANGE SERVICE

S3.11 Verizon Local Calling Plan (Continued)

S3.11.3 Rates (Continued)

- b. Rate Schedule (Continued)
(1) Residence Individual Access Line (Continued)

	IOSC:	Basic Calling <u>Plan</u>	Community Plus <u>Plan</u>	Premium <u>Plan</u>	
		10679	21673	10669	
Saluda		\$ 9.82	\$ 17.18	\$ -	
Smithfield		12.00	17.47	-	
South Brunswick		7.96	15.94	36.04	
Stafford^A		-	-	-	
Stony Creek		11.04	17.47	36.04	
Surry		11.65	17.47	36.04	
Tappahannock		8.58	17.18	-	
Tazewell		8.58	17.18	-	
Triangle^A (includes Quantico)		-	-	-	(C)
Wakefield		12.00	17.47	36.04	
Warsaw		8.58	15.94	36.04	
Weyers Cave^A		-	-	-	(C)
Windsor		12.00 (I)	17.47	-	

Note A: Residential basic telephone services under the exchanges (in bold print) are Competitive and priced as indicated under Tariff 220.

GENERAL CUSTOMER SERVICES TARIFF

VERIZON SOUTH INC.
VIRGINIA

Section 3
Ninth Revised Page 75
Cancels Eighth Revised Page 75
EFFECTIVE: August 17, 2009

ISSUED: July 2, 2009
BY: President
Richmond, Virginia

S3. BASIC LOCAL EXCHANGE SERVICE

S3.11 Verizon Local Calling Plan (Continued)

S3.11.3 Rates (Continued)

b. Rate Schedule (Continued)

(2) Business Individual Access Line and CentraNet NARs (3-7) (Continued)

	Basic Calling Plan	Community Plus Plan	Premium Plan	
	IOSC: 21674	10843	11849	
	CEN NARs 3-7: 99631	99633	99635	
Courtland	\$ 23.00	\$ 30.00	-	
Crittenden	29.50	34.50	73.00	
Dahlgren^A	28.00	32.00	73.00	(C)
Dale City (includes Hoadly)	-	-	-	
Dawn	29.50	34.50	73.00	
Dayton	-	-	-	
Deltaville	24.50	32.00	-	
Dendron	29.50	34.50	73.00	
Disputanta ELS Adder ¹	29.50 .25 <u>29.75</u>	34.50 .30 <u>34.80</u>	73.00 .66 <u>73.66</u>	
Doswell	29.50	34.50	73.00	
Drakes Branch	23.00	28.00	71.00	
Dulles	-	-	-	
Dulles Metro	-	-	-	
Dwight	24.50	30.00	-	
Edom	-	-	-	
Elkton	-	-	-	
Emporia	28.00	32.00	73.00	
Eppes Fork	26.00	32.00	73.00	
Farnham	24.50	30.00	73.00	
Franklin	29.50	34.50	-	
Gladstone	28.00	34.50	73.00	
Gloucester	-	-	-	
Great Bridge^A (includes Battlefield)	-	-	-	

Note 1: Disputanta Extended Local Service (ELS) Adder provides for unlimited calling to Verizon Virginia's Dinwiddie Exchange.

Note A: Business basic telephone services under the exchanges (in bold print) are Competitive and priced as indicated under Tariff 220.

GENERAL CUSTOMER SERVICES TARIFF

VERIZON SOUTH INC.
VIRGINIA

Section 3
Ninth Revised Page 76
Cancels Eighth Revised Page 76
EFFECTIVE: August 17, 2009

ISSUED: July 2, 2009
BY: President
Richmond, Virginia

S3. BASIC LOCAL EXCHANGE SERVICE

S3.11 Verizon Local Calling Plan (Continued)

S3.11.3 Rates (Continued)

- b. Rate Schedule (Continued)
(2) Business Individual Access Line and CentraNet NARs (3-7) (Continued)

	Basic Calling Plan	Community Plus Plan	Premium Plan
IOSC:	21674	10843	11849
CEN NARs 3-7:	99631	99633	99635
Grottoes	-	-	-
Grundy	\$ 24.50	\$ 32.00	-
Hague	23.00	30.00	-
Hanover	29.50	34.50	73.00
Harrisonburg^A	-	-	-
Hayes	29.50	34.50	-
Haymarket	-	-	-
Heathsville	23.00	30.00	-
Hickory	-	-	-
Hinton	-	-	-
Holland	29.50	34.50	-
Hurley	23.00	28.00	71.00
Independent Hill	-	-	-
Irvington	23.00	28.00	71.00
Ivor	29.50	34.50	73.00
Jarratt	26.00	30.00	73.00
Jewell Ridge	24.50	32.00	73.00
Keezletown	-	-	-
Keysville	24.50	30.00	73.00
Kilmarnock	23.00	30.00	-
King George	28.00	34.50	-
King & Queen	29.50	34.50	73.00
King William	29.50	34.50	73.00

(C)

Note A: Business basic telephone services under the exchanges (in bold print) are Competitive and priced as indicated under Tariff 220. (N)

GENERAL CUSTOMER SERVICES TARIFF

VERIZON SOUTH INC.
VIRGINIA

Section 3
Eighth Revised Page 78
Cancels Seventh Revised Page 78
EFFECTIVE: August 17, 2009

ISSUED: July 2, 2009
BY: President
Richmond, Virginia

S3. BASIC LOCAL EXCHANGE SERVICE

S3.11 Verizon Local Calling Plan (Continued)

S3.11.3 Rates (Continued)

b. Rate Schedule (Continued)

(2) Business Individual Access Line and CentraNet® NARs (3-7) (Continued)

	IOSC:	Basic Calling Plan	Community Plus Plan	Premium Plan	
	CEN NARs 3-7:	21674	10843	11849	
		99631	99633	99635	
Saluda		\$ 26.00	\$ 32.00 (I)	\$ -	
Smithfield		29.50	34.50	-	
South Brunswick		23.00	30.00	71.00	
Stafford		-	-	-	
Stony Creek		28.00	34.50	73.00	
Surry		29.50	34.50	73.00	
Tappahannock		24.50	32.00	-	
Tazewell		24.50	32.00	-	
Triangle^A (includes Quantico)		-	-	-	(C)
Wakefield		29.50	34.50	73.00	
Warsaw		24.50	30.00	73.00	
Weyers Cave^A		-	-	-	(C)
Windsor		29.50	34.50	-	

Note ^A: Business basic telephone services under the exchanges (in bold print) are Competitive and priced as indicated under Tariff 220. (N)

COMPETITIVE PRICED LOCAL EXCHANGE SERVICES TARIFF - No. 220

VERIZON SOUTH INC.
VIRGINIA

Section 1B
Fourth Revised Page 1
Cancels Third Revised Page 1
EFFECTIVE: August 17, 2009

ISSUED: July 2, 2009
BY: President
Richmond, Virginia

EXCHANGE PRICES - RESIDENTIAL

Residential Dialtone Service Price (Per Month, usage indicated where applicable)

<u>Exchange</u>	<u>Flat Rate</u> <u>(Unlimited)</u>	<u>Usage Sensitive</u> <u>Service¹</u> <u>(US\$)</u>	<u>Exchange Only¹</u>	<u>Message Rate¹</u> <u>(50 Call</u> <u>Allowance)</u>	<u>Message Rate¹</u> <u>(No Call</u> <u>Allowance)</u>	
Arcola	\$17.37	\$9.48	\$15.80	-	-	
Dahlgren*						(N)
Dale City	\$17.37	\$9.48	\$15.80	-	-	
Gloucester	\$17.37	\$9.48	\$15.80	-	-	
Great Bridge	\$17.37	\$9.48	\$15.80	-	-	
Harrisonburg*						(N)
Haymarket	\$17.37	\$9.48	\$15.80	-	-	
Hayes	\$17.37	\$9.48	\$15.80	-	-	
Hickory	\$17.37	\$9.48	\$15.80	-	-	
Independent Hill	\$17.37	\$9.48	\$15.80	-	-	
Lorton	\$17.37	\$9.48	\$15.80	\$11.90	\$8.74	
Lorton Metro	\$17.37	\$9.48	\$15.80	\$11.90	\$8.74	
Manassas	\$17.37	\$9.48	\$15.80	-	-	
Nokesville	\$17.37	\$9.48	\$15.80	-	-	
Occoquan	\$17.37	\$9.48	\$15.80	-	-	
Old Church	\$17.37	\$9.48	\$15.80	-	-	
Princess Anne	\$17.37	\$9.48	\$15.80	-	-	
Stafford	\$17.37	\$9.48	\$15.80	-	-	
Triangle*						(N)
Weyers Cave*						(N)

Note 1: For Usage options and Charges see General Customer Services Tariff, Sections 3.4 and 3.5.

Note 2: Listed rates were previously found in General Customer Services Tariff, Sections 3.2, 3.4, and 3.5.

* For current rates, see General Customer Service Tariff, Sections 3.2 thru 3.5.

(N)

COMPETITIVE PRICED LOCAL EXCHANGE SERVICES TARIFF - No. 220

VERIZON SOUTH INC.
VIRGINIA

Section 1C
Second Revised Page 1
Cancels First Revised Page 1

ISSUED: July 2, 2009
BY: President
Richmond, Virginia

EFFECTIVE: August 17, 2009

EXCHANGE PRICES – BUSINESS

Business Dialtone Service Price (Per Month, usage indicated where applicable)

Exchange	Flat Rate	Message Rate ¹ (50 Call Allowance)	Optional Usage Sensitive ¹ (US\$)	
	(For current rates in listed exchanges, see General Customer Services Tariff, Sections 3.2 thru 3.5)			(T)
Dahlgren				(N)
Great Bridge				
Harrisonburg				(N)
Haymarket				
Princess Anne				
Triangle				(N)
Weyers Cave				(N)

Note 1: For Usage options and Charges see General Customer Services Tariff, Sections 3.4 and 3.5.

Competitiveness Test Dahlgren, Harrisonburg, Triangle and Weyers Cave Exchanges

Step A

A minimum of 75% of the households/businesses in the telephone exchange area can choose residential/business telephone service from among at least two (2) competitors to Verizon

This test is met by the combined coverage of a number of competitors, including AT&T Wireless, Sprint, and T-Mobile. (see Attachment A-Dahlgren/Harrisonburg/Triangle/Weyers Cave Exchanges).

Step B

A minimum of two (2) of the competitors to Verizon in part "a" must offer residential/business local telephone service that may be purchased by the residential/business customer without a corresponding requirement to purchase non-telecommunications services (e.g., video or broadband internet service) from that competitor

This test is met by a number of competitors, including AT&T Wireless, Sprint, and T-Mobile. (see Attachment A-Dahlgren/Harrisonburg/Triangle/Weyers Cave Exchanges).

Step C

At least 50% of the households/businesses in the telephone exchange area can choose a facilities-based competitor that owns its own wireline network facilities

This test is met by a number of competitors, including AT&T Wireless, Sprint, and T-Mobile. (see Attachment A-Dahlgren/Harrisonburg/Triangle/Weyers Cave Exchanges).

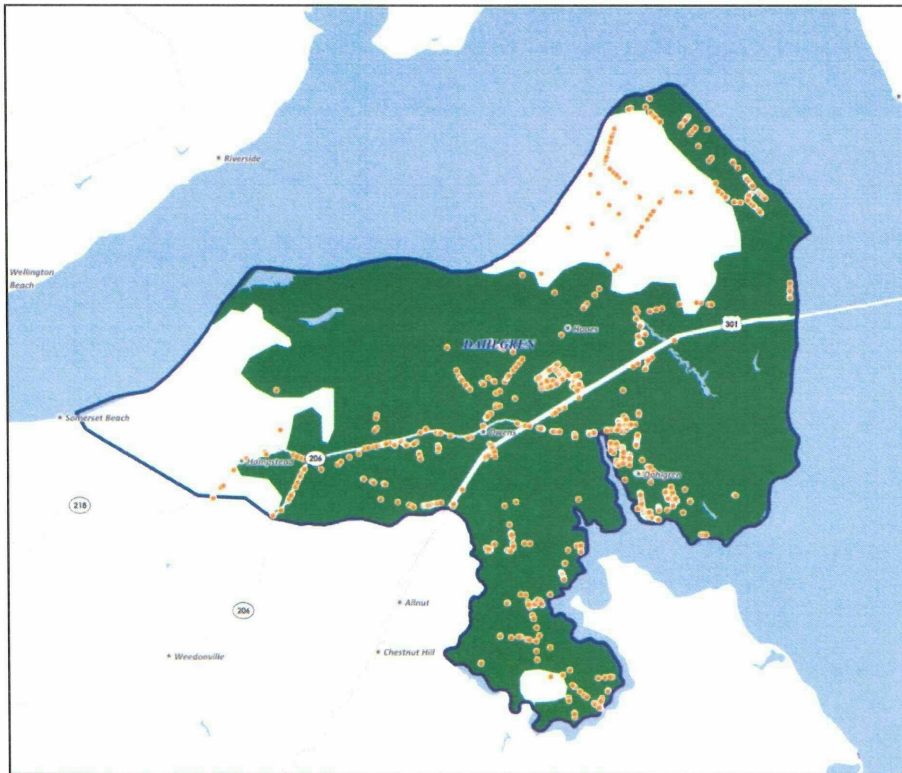
ATTACHMENT A
(Dahlgren/Harrisonburg/Triangle/Weyers
Cave Exchanges)

Dahlgren – 2+ carriers with Best/Better coverage



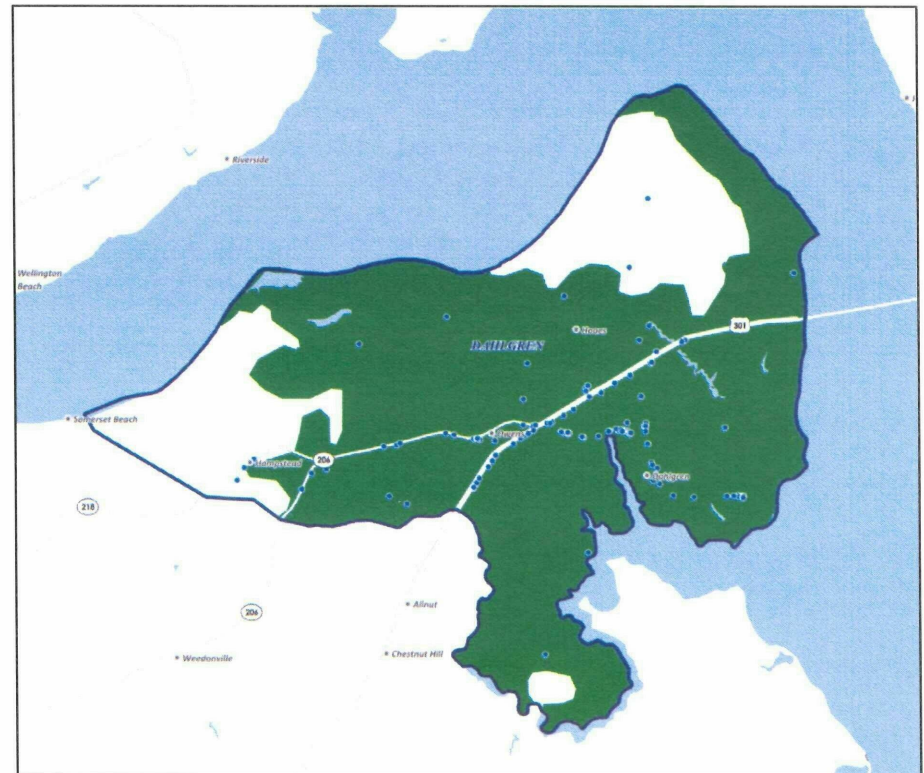
Coverage Maps

Household Locations



**93.7% of
Households
Covered**

Business Locations



**96.8% of
Businesses
Covered**

Harrisonburg – 2+ carriers with Best/Better coverage



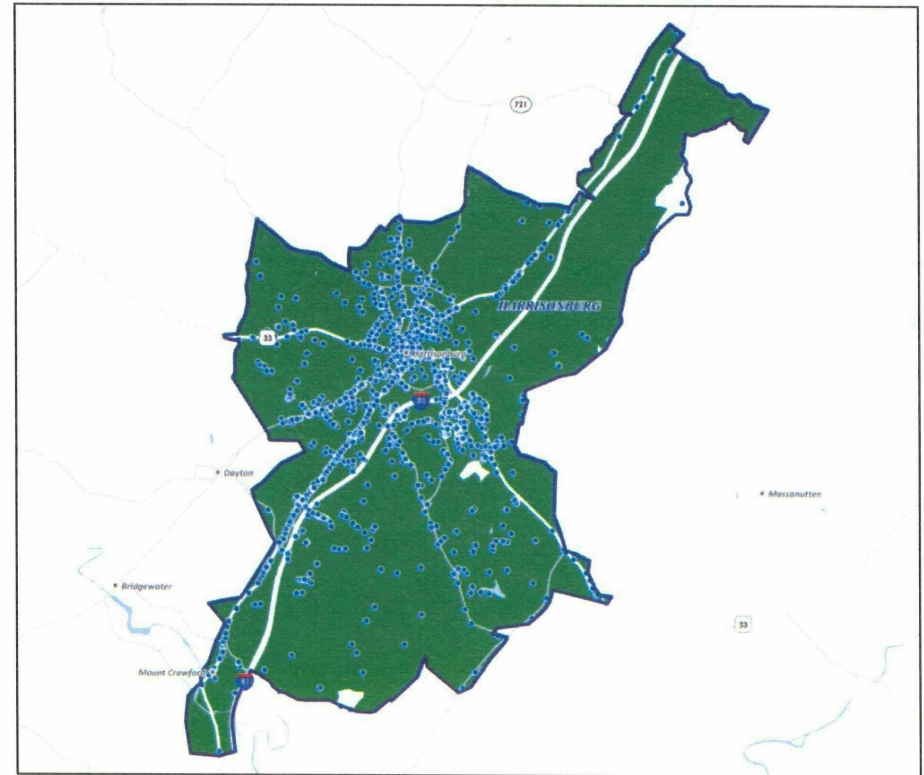
Coverage Maps

Household Locations



**99.4% of
Households
Covered**

Business Locations



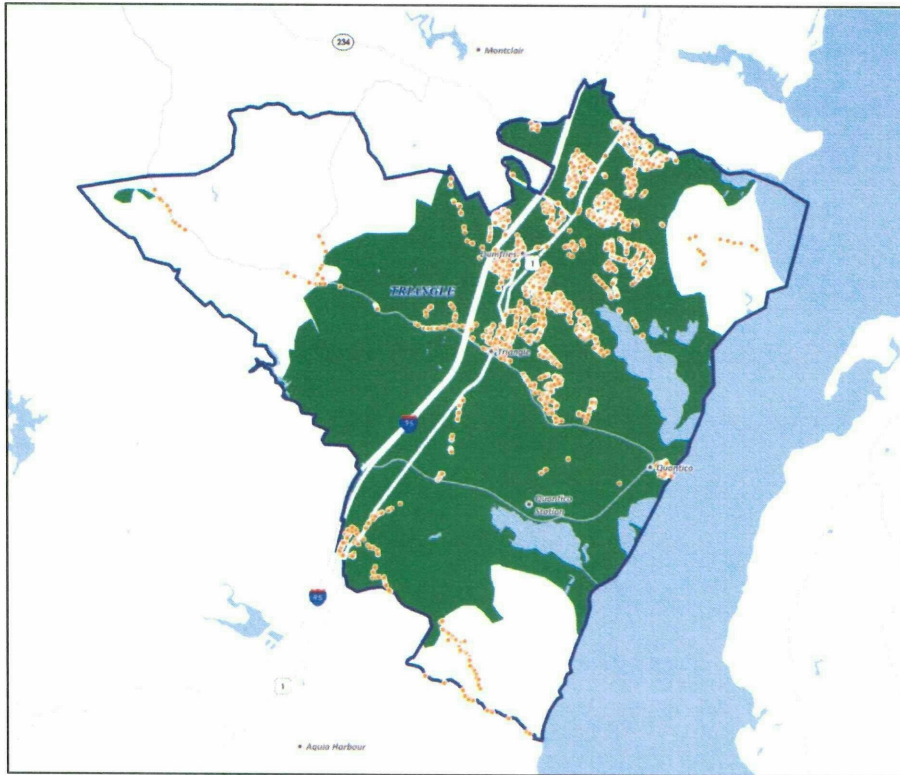
**99.9% of
Businesses
Covered**

Triangle – 2+ carriers with Best/Better coverage



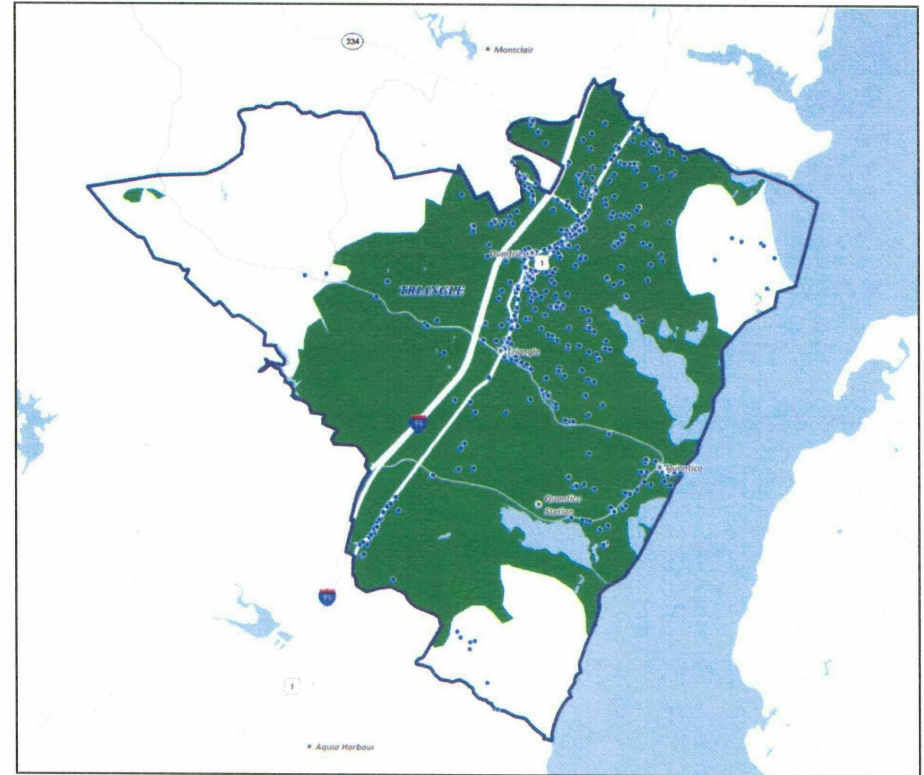
Coverage Maps

Household Locations



**97.5% of
Households
Covered**

Business Locations



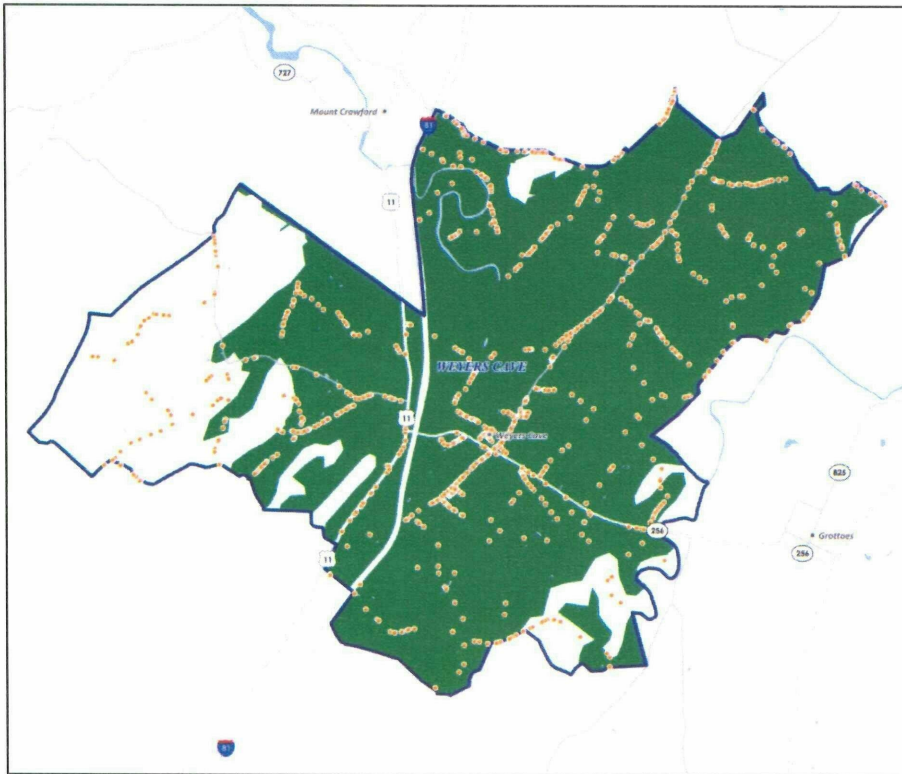
**98.3% of
Businesses
Covered**

Weyers Cave – 2+ carriers with Best/Better coverage



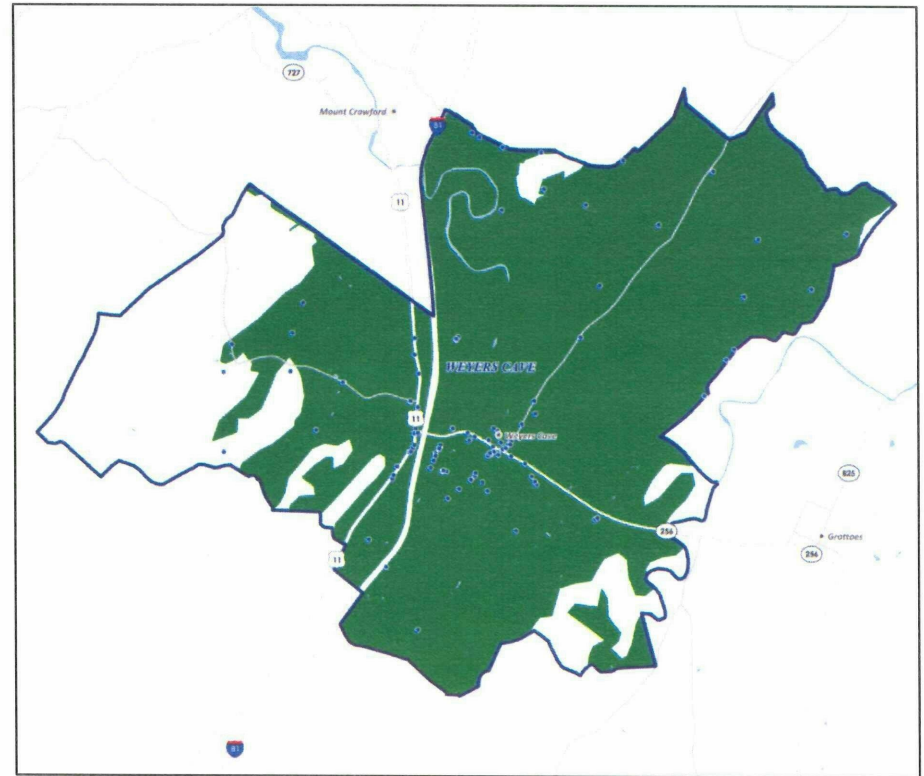
Coverage Maps

Household Locations



**86.9% of
Households
Covered**

Business Locations



**96.7% of
Businesses
Covered**

Dahlgren, Harrisonburg, Triangle, & Weyers Cave



Summary Coverage Statistics

Exchange	HH Covered by 2+ Carriers (Best+Better)	Bus Covered by 2+ Carriers (Best+Better)
DAHLGREN	93.7%	96.8%
HARRISONBURG	99.4%	99.9%
TRIANGLE	97.5%	98.3%
WEYERS CAVE	86.9%	96.7%

VERIZON SOUTH

<u>Activity and Approval Date</u>	<u>Cumulative % of Competitive Households</u>	<u>Cumulative % of Competitive Businesses</u>
Commission Order (12/14/07)	37%	10%
Staff Action (8/14/08)	51%	10%
Pending (Filed 7/2/09)	59%	19%



Find a Store | Coverage Viewer |

*Dahlgren
Harrisonburg
Triangle
Weyers Cave*

Cell Phones & Devices | Cell Phone Plans | Prepaid GoPhone | Features | Ringtones & More | Accessories | Packages & Deals

Individual Plans

Family Plans

Prepaid Plans

Pick Your Plan

Pay As You Go

Data Plans

BlackBerry Plans

PDA/Smartphone Plans

Laptop Connect Plans

Individual Cell Phone Plans

AT&T, the nation's fastest 3G Network, offers a variety of individual cell phone plans where you'll enjoy:

- Unlimited calling to other AT&T wireless customers with Mobile to Mobile
- No roaming or long distance charges
- Saving unused minutes with Rollover®
- Unlimited calling on Nights and Weekends

On the road again? Check out our national coverage in areas you plan to visit.

View national map

Nation Plans

Minutes	Monthly Cost	Rollover®	Unlimited Nights/Weekends*	Unlimited Mobile to Mobile	Additional Details
450	\$39.99		Includes 5000		View Details
900	\$59.99				View Details
1350	\$79.99				View Details
Unlimited	\$99.99				View Details

Senior Plan - Available to customers 65 and older.

Minutes	Monthly Cost	Rollover®	Unlimited Nights/Weekends*	Unlimited Mobile to Mobile	Additional Details
200	\$29.99		Includes 500		View Details

Other Monthly Charges | Plan Terms | Online Pricing | Return Policy
Additional Messaging & Data Charges

Service provided by AT&T Mobility.

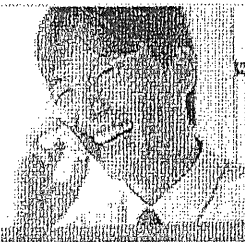
Wireless Site Map | Other Wireless Sites | Wireless Service Agreement | Cell Phone Records Security

Privacy Policy - updated 06-11-09 | Careers | Contact Us | Terms of Use

BusinessTalk Plans

Voice Plans

Affordable packages
to fit your business or personal needs



Business Pooled Nation

The flexibility of pooled minutes across the country.

- Share minutes with other Corporate Responsibility Users around the country on the same account
- No roaming or nationwide long distance charges

AT&T Nation plans

Think of the entire country as your calling region.

- National calling
- No roaming or nationwide long distance charges

Business Pooled Nation

Nationwide reach plus the flexibility of pooled minutes

Share minutes with other Corporate Responsibility Users around the country on the same account

No roaming or nationwide long distance charges

These plans are only available to business customers who have signed qualified national enterprise agreements with AT&T

Prices:

\$44.99 for up to 450 minutes to \$154.99 for up to 4000 minutes

AT&T Nation Plans

No roaming or long distance charges across most major cities

National calling

No roaming or nationwide long distance charges

Prices:

\$39.99 for up to 450 minutes to \$199.99 for up to 6000 minutes

Qualify For Discounts

Get special deals through your employer or school!

Enter work email

Why we need your email

Why Shop Premier?

- Free shipping
- Great savings & offers on the latest phones



[Learn more](#)

Introducing

iPhone 3G S

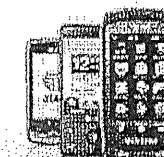
The fastest, most powerful iPhone yet.



[Get yours today](#)

Stay In Touch With Just a Touch

Choose from these three touch screen phones!



[Get one now](#)



Enter your search question here

Dahlgren
Harrisonburg
Triangle
Weyers Cave

[Packages](#) | [Phones](#) | [Plans](#) | [Services](#) | [Accessories](#) | [Promotions](#) | [Coverage Maps](#) | [Shopping Cart](#)

[Plans](#) | [Phones](#) | [Services](#) | [Accessories](#)

Got questions? Click to chat.

Order by phone
1-888-866-7500

Retrieve my Saved Cart |
You are shopping in Triangle, VA 22172

Narrow My List > Nextel Direct Connect® Individual Share Business Mobile Broadband Cards

Simply EverythingSM

Buy with Mobile Broadband and save \$9.99/mo.

Everything your phone, PDA or smartphone can do nationwide - unlimited text, surf, email, listen, watch, find and of course, talk - on one simple plan.

This plan includes

Unlimited data: Web surfing, email, BlackBerry Internet Services (BIS), GPS Navigation, Music Premier, TV Premier, NFL Mobile Live, NASCAR Sprint Cup MobileSM

Unlimited Direct Connect: Direct Connect and Group Connect (for capable phones)

Unlimited messaging: Text, pictures and video

Unlimited talk: Unlimited anytime minutes, nationwide long distance and no roaming charges

[More about what's included in this plan](#)

Create your own stimulus plan

Save up to \$360/annually on our Everything Data Family Plan, compared to similar AT&T and Verizon plans.

[Calculate savings](#)

	Anytime Minutes	Monthly Price	Additional Anytime Minutes	
<input type="button" value="Best Value"/>	Unlimited	\$99.99	Unlimited	<input type="button" value="Select"/>

Simply EverythingSM Family

Buy with Mobile Broadband and save \$9.99/mo.

Everything you need for the whole family - unlimited text, surf, email, listen, watch, find and, of course, talk - on one simple plan.

This plan includes

Unlimited data: Web surfing, email, BlackBerry Internet Services (BIS), GPS Navigation, Music Premier, TV Premier, NFL Mobile Live, NASCAR Sprint Cup MobileSM

Unlimited Direct Connect: Direct Connect and Group Connect (for capable phones)

Unlimited messaging: Text, pictures and video

Unlimited talk: Unlimited anytime minutes, nationwide long distance and no roaming charges

Lines 1-2 included. Lines 3-5 \$89.99/mo./line

More about what's included in this plan

	Anytime Minutes	Monthly Price	Additional Anytime Minutes	Lines	
	Unlimited	\$189.98	Unlimited	2 	

Everything Data

Maximize your phone's potential with unlimited data, Direct Connect and messages.

This plan includes

Unlimited data: Web surfing, email, BlackBerry Internet Services (BIS), GPS Navigation, Music Premier, TV Premier, NFL Mobile Live, NASCAR Sprint Cup MobileSM

Unlimited Direct Connect: Direct Connect and Group Connect (for capable phones)

Unlimited messaging: Text, pictures and video

Talk: Unlimited mobile to mobile, night calling and weekends starting at 7 p.m., nationwide long distance and no roaming charges

More about what's included in this plan

	Anytime Minutes	Monthly Price	Additional Anytime Minutes	
	450	\$69.99	45¢/min	
	900	\$89.99	40¢/min	

Everything Data Family

Have fun with your phones —unlimited email, Web, TV, text and more.

This plan includes

Unlimited data: Web surfing, email, BlackBerry Internet Services (BIS), GPS Navigation, Music Premier, TV Premier, NFL Mobile Live and NASCAR Sprint Cup MobileSM

Unlimited messaging: Text, pictures and video

Talk: Unlimited mobile to mobile, night calling and weekends starting at 7 p.m., nationwide long distance and no roaming charges

Lines 1-2 included. Lines 3-5 are \$19.99/mo./line

Featured services for Nextel Direct Connect[®] capable phones: Direct Connect and Group Connect[®] \$5/mo./line (Look for this on the Services page prior to checkout.)

More about what's included in this plan

Additional plan options:

Unlimited Nights & Weekends

- Unlimited Nights & Weekends starting at 7pm! - \$0.00
- Nights and Weekends starting at 6PM - \$10.00

Anytime Minutes	Monthly Price	Additional Anytime Minutes	Lines	
1500	\$129.99	40¢/min	2	Select
3000	\$169.99	25¢/min	2	Select

Everything Messaging

Communicate without saying a word; with this plan, you can text, share and send your heart out.

This plan includes

Unlimited Direct Connect: Direct Connect and Group Connect (for capable phones)

Unlimited messaging: Text, pictures and video

Talk: Unlimited mobile to mobile, night calling and weekends starting at 7 p.m., nationwide long distance and no roaming charges

More about what's included in this plan

Anytime Minutes	Monthly Price	Additional Anytime Minutes	
450	\$49.99	45¢/min	Select

900

\$69.99

40¢/min

Select

Everything Messaging Family

Share minutes and text your heart out with unlimited messages.

This plan includes

Unlimited messaging: Text, pictures and video

Talk: Unlimited mobile to mobile, night calling and weekends starting at 7 p.m., nationwide long distance and no roaming charges

Lines 1-2 included. Lines 3-5 are \$9.99/mo./line

Featured services for Nextel Direct Connect® capable phones: Direct Connect and Group Connect® \$5/mo./line (Look for this on the Services page prior to checkout.)

More about what's included in this plan

Additional plan options:

Unlimited Nights & Weekends

- Unlimited Nights & Weekends starting at 7pm! - \$0.00
- Nights and Weekends starting at 6PM - \$10.00

Anytime Minutes	Monthly Price	Additional Anytime Minutes	Lines	
1500	\$99.99	40¢/min	2	Select
3000	\$149.99	25¢/min	2	Select

Talk

Let your voice be heard with these voice-only plans.

This plan includes

Talk: Unlimited mobile to mobile, night calling and weekends starting at 7 p.m., nationwide long distance and no roaming charges

More about what's included in this plan

Additional plan options:

Unlimited Nights & Weekends

- Unlimited Nights & Weekends starting at 7pm! - \$0.00
- Nights and Weekends starting at 6PM - \$5.00

Anytime Minutes	Monthly Price	Additional Anytime Minutes	
450	\$39.99	45¢/min	Select
900	\$59.99	40¢/min	Select

Talk for Family

Let your voice be heard with these voice-only shared plans.

This plan includes

Talk: Unlimited mobile to mobile, night calling and weekends starting at 7 p.m., nationwide long distance and no roaming charges

Lines 1-2 included. Lines 3-5 are \$9.99/mo./line

Featured services for Nextel Direct Connect® capable phones: Direct Connect and Group Connect® \$5/mo./line (Look for this on the Services page prior to checkout.)

More about what's included in this plan

Additional plan options:

Unlimited Nights & Weekends

- Unlimited Nights & Weekends starting at 7pm! - \$0.00
- Nights and Weekends starting at 6PM - \$10.00

Anytime Minutes	Monthly Price	Additional Anytime Minutes	Lines	
700	\$69.99	45¢/min	2	Select

Basic

Get back to the basics with this plan ideal for the occasional caller.

This plan includes

Talk: Night calling and weekends starting at 9 p.m., nationwide long distance and no roaming charges

More about what's included in this plan

Additional plan options:

Unlimited Nights & Weekends

- Nights and Weekends - Starting at 9pm - \$0.00
- Nights and Weekends - Starting at 7pm - \$5.00
- Nights and Weekends - Starting at 6pm - \$10.00

Anytime Minutes	Monthly Price	Additional Anytime Minutes	
200	\$29.99	45¢/min	Select

Business Essentials with Messaging and Data

Give your employees the tools they need to succeed with 24/7 email access, unlimited texting to always stay connected and driving directions to every important meeting.

This plan includes

Unlimited data: Web surfing, email, BlackBerry Internet

Services (BIS), GPS Navigation, Music Premier, TV Premier, NFL Mobile Live, NASCAR Sprint Cup MobileSM

Unlimited Direct Connect: Direct Connect and Group Connect (for capable phones)

Unlimited messaging: Text, pictures and video

Talk: Unlimited mobile to mobile, night calling and weekends starting at 7 p.m., nationwide long distance and no roaming charges

Already have this plan? Give additional employees access to plan minutes for \$55/mo./line. Call 866-866-7509 to order.

More about what's included in this plan

Anytime Minutes	Monthly Price	Additional Anytime Minutes	
400	\$69.99	40¢/min	Select
1000	\$89.99	40¢/min	Select
1400	\$109.99	40¢/min	Select
2000	\$129.99	40¢/min	Select
3000	\$179.99	40¢/min	Select
4000	\$229.99	40¢/min	Select

Business Essentials

Everything you need to keep your business buzzing with pooled minutes available to all Business Essential plan subscribers on the same account.

This plan includes

Unlimited Direct Connect: Direct Connect and Group Connect (for capable phones)

Talk: Unlimited mobile to mobile, night calling and weekends starting at 7 p.m., nationwide long distance and no roaming charges

Already have this plan? Give additional employees access to plan minutes from \$25/mo./line. Call 866-866-7509 to order.

Additional plan options:

Unlimited Nights & Weekends

- Unlimited Nights & Weekends starting at 7pm! - \$0.00
- Nights and Weekends - Starting at 6pm - \$10.00

More about what's included in this plan

Anytime Minutes	Monthly Price	Additional Anytime Minutes	
400	\$39.99	40¢/min	Select
1000	\$59.99	40¢/min	Select
1400	\$79.99	40¢/min	Select
2000	\$99.99	40¢/min	Select
3000	\$149.99	40¢/min	Select
4000	\$199.99	40¢/min	Select

Nextel Direct Connect® Custom Plans

Do you rely on push-to-talk? Try our Nextel Direct Connect Custom Plans. Pick either Unlimited Work Group Communications (\$29.99) OR Unlimited Work Group Communications + Web and Navigation (\$39.99/\$49.99). Then add voice minutes to share.

This plan includes

Unlimited Direct Connect: Direct Connect and Group Connect

Unlimited Messaging: Text, pictures and video

Talk: Unlimited mobile to mobile, night calling and weekends starting at 9 p.m., nationwide long distance and no roaming charges

More about what's included in this plan

Additional plan options:

+ Unlimited Web and Navigation

Surf the Net as easily as you do from your laptop or PC and get voice-guided turn-by-turn driving directions, maps, traffic alerts and on-click rerouting.

Anytime minutes

Available to all Nextel Direct Connect Custom Plan subscribers on the same account.

- 500 Anytime minutes – \$30/mo.
- 2,000 Anytime minutes – \$100/mo. Buy now and get an extra 500 minutes!

	Anytime Minutes	Monthly Price	Additional Anytime Minutes	
Work Group Communications	0	\$29.99	40¢/min	Select
Work Group Communications + Web and Navigation	0	\$39.99 / 49.99 Nextel phones / Sprint phones	40¢/min	Select

Mobile Broadband Connection Plan - 3G

Buy with Simply EverythingSM and save \$9.99/mo.

With this plan and your Mobile Broadband device, you have instant Internet access wherever you go on the Sprint Mobile Broadband Network.

This plan includes

5 GB/mo. in total or 300 MB/mo. while off-network roaming. (1024 kb=1MB. 1024 MB=1 GB)

Additional monthly usage over 5 GB costs 5¢/MB. You may not use more than 300 MB/mo. while off-network roaming. You can check your usage online anytime. Log into www.sprint.com/mysprint and click on usage details.

International data roaming may incur additional charges.

Sprint reserves the right to limit throughput speeds or amount of data transferred.

Learn more about what's included in this plan

Here's what you can do with 5GB or 300MB of data a month:*

	Approximate file size	Approximate volume at 300MB	Approximate volume at 5GB
Email (1 text page without attachments)	3KB	>100,000 emails	>1.7 Million emails
Photo (Low-resolution digital photo)	500KB	>600 photos	>10,000 photos
Music (3-minute song)	4MB	>70 songs	>1,200 songs

*Actual usage volume and size of data applications vary widely.

Anytime Minutes	Monthly Price	Monthly Usage	
0	\$59.99	5GB	Select

Mobile Broadband Connection Plan - 3G/4G

Get the best of both worlds: Take advantage of turbo-charged unlimited 4G Internet access in the Baltimore area and 5GB of 3G coverage nationwide. Important coverage and plan information.

This plan includes

An unlimited 4G connection in Baltimore that can keep up with you. Download mammoth files, watch streaming videos and video conferencing without the lag. More coverage locations coming soon!

3G coverage nationwide: 5GB/mo. in total or 300 MB/mo. while off-network roaming. Additional monthly usage over 5GB costs 5¢/MB. You may not use more than 300 MB/mo. while off-network roaming. You can check your usage online anytime. Log into www.sprint.com/mysprint and click on usage details.

International data roaming may incur additional charges.

Sprint reserves the right to limit throughput speeds or amount of data transferred.

Anytime Minutes

Monthly Price

Monthly Usage

Unlimited

\$79.99

4G: Unlimited/3G: 5GB

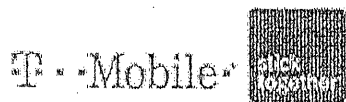


Features included in all voice plans.

[Terms & Conditions](#)

[Your Privacy Rights](#) | [Acceptable Use Policy and Visitor Agreement](#) | [Copyright Notices](#) | [Find a Store](#) | [Contact Us](#) | [Email Sign Up](#)

© 2009 Sprint. All rights reserved.



Location: Dahlgren, VA 22448 | Store Locator | Cart [English](#) | [Español](#)
 My T-Mobile [forgot password?](#) [register](#)

[Home](#) > [Plans](#) > [Individual Plans](#)

Individual Plans

- Individual myFaves
- Individual
- Individual myFaves with FlexPay
- Individual with FlexPay

*Dahlgren
 Harrisonburg
 Triangle
 Weyers Cove*

Individual myFaves® Plans

myFaves plans give you unlimited nationwide calls to the five numbers you call most, as well as free domestic long distance and no digital roaming charges anywhere across the US. All myFaves plans \$49.99/month and over include unlimited T-Mobile to T-Mobile calling, too! All myFaves plans require a two-year contract.

Plan name	Whenever Minutes	Weekend/ Night Mins	myFaves Minutes	Price per month	
myFaves 300	300	Unlimited	Unlimited	\$39. ⁹⁹	compare
Now Includes Unlimited T-Mobile To T-Mobile Calling!					
myFaves 600	600	Unlimited	Unlimited	\$49. ⁹⁹	compare
Now Includes Unlimited T-Mobile To T-Mobile Calling!					
myFaves 1000	1000	Unlimited	Unlimited	\$59. ⁹⁹	compare
Now Includes Unlimited T-Mobile To T-Mobile Calling!					



Home > Plans > Business Plans

Business Plans

- National Small Business
- National Business
- Enterprise Business

*Dahlgren
 Harrisonburg
 Triangle
 Weyers Cave*

National Small Business Plans

Get more time to build your business with up to 4,500 Whenever Minutes®, unlimited mobile-to-mobile calling, features like Enhanced VoiceMail and Built-in Paging, and no roaming or long distance charges. You get two lines, plus up to three more lines at just \$9.99 each.

Plan name	Whenever Minutes	Weeknight Minutes	Weekend Minutes	Price per month	
Small Business 1000	1000	Unlimited	Unlimited	\$69. ⁹⁹	compare
Small Business 2000	2000	Unlimited	Unlimited	\$99. ⁹⁹	compare
Small Business 3000	3000	Unlimited	Unlimited	\$129. ⁹⁹	compare
Small Business 4500	4500	Unlimited	Unlimited	\$199. ⁹⁹	compare

National Business Plans

[↑ top](#)

Help your employees stay connected when they are out of the office with up to 5000 Whenever Minutes®, mobile-to-mobile calling, and text messaging capability.

What type of plan?

Plan name	Whenever Minutes	Weeknight Minutes	Weekend Minutes	Price per month	
National Business Plan 300	300	None	Unlimited	\$29 ^{.99}	<input type="checkbox"/> compare
National Business Plan 600	600	None	Unlimited	\$39 ^{.99}	<input type="checkbox"/> compare
National Business Plan 1000	1000	None	Unlimited	\$49 ^{.99}	<input type="checkbox"/> compare
National Business Plan 1500	1500	None	Unlimited	\$59 ^{.99}	<input type="checkbox"/> compare
National Business Plan 2500	2500	None	Unlimited	\$99 ^{.99}	<input type="checkbox"/> compare
National Business Plan 5000	5000	None	Unlimited	\$129 ^{.99}	<input type="checkbox"/> compare

Enterprise Business Plans

[↑ top](#)

Flexible, cost-efficient, and tailored to your needs, T-Mobile Enterprise Business Plans combine the connectivity of our National Business Plans with the convenience of shared plan minutes. Call a T-Mobile Business Representative for pricing information.

All T-Mobile Enterprise Business Plans include:

- Pooled national Whenever Minutes[®]
- Unlimited mobile-to-mobile calling
- Unlimited nights
- Unlimited Weekends
- Caller ID
- VoiceMail
- Conference calling
- Call waiting
- Call forwarding



Prices exclusive to T-Mobile.com and valid only with new service activation. Minimum 1-year contract required, call 1-888-537-4242 or visit [one of our T-Mobile stores](#).

