

Stephen C. Spencer
Director - Regulatory

STATE CORPORATION COMMISSION
RECEIVED

JAN 14 2010

DIVISION OF COMMUNICATIONS
RICHMOND, VA



703 E. Grace Street
Richmond, VA 23219

Phone 804 772-1585
Fax 804 772-3817
steve.spencer@verizon.com

January 14, 2010

Virginia State Corporation Commission
Communications Division
Mr. William Irby, Director
9th Floor, Tyler Building
1300 East Main Street
Richmond, Virginia 23219

Dear Mr. Irby:

Attached, in triplicate, for filing with your Honorable Commission are the following proposed Verizon South Inc. ("Verizon") tariffs pages to become effective March 1, 2010.

VERIZON SOUTH INC.
GENERAL CUSTOMER SERVICES TARIFF
Section 3, Thirteenth Revised Page 4
Twentieth Revised Page 5
Seventeenth Revised Page 6
Fifteenth Revised Page 7
Tenth Revised Page 7.1
Seventeenth Revised Page 8
Fourteenth Revised Page 8.1
Fifteenth Revised Page 9
Fifteenth Revised Page 9.1
Seventeenth Revised Page 10
Thirteenth Revised Page 32
Twentieth Revised Page 33
Fifteenth Revised Page 34
Fifteenth Revised Page 35
Sixteenth Revised Page 36
Thirteenth Revised Page 37
Seventeenth Revised Page 38
Tenth Revised Page 55
Tenth Revised Page 69

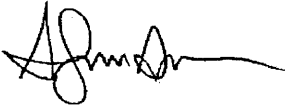
VERIZON SOUTH INC.
GENERAL CUSTOMER SERVICES TARIFF (Cont'd)
Section 3, Fourteenth Revised Page 70
Fourteenth Revised Page 71
Thirtieth Revised Page 72
Thirteenth Revised Page 73

VERIZON SOUTH INC.
COMPETITIVE PRICED LOCAL EXCHANGE SERVICES TARIFF, S.C.C.-Va.-No. 220
Section 1B, Fifth Revised Page 1
Section 1B, Original Page 1.1
Section 1D, Third Revised Page 1

In this filing are the proposed tariff pages deregulating the price of residential BLETs service in the Bridgewater, Callao, Chuckatuck, Crittenden, Dayton, Doswell, Dulles, Elkton, Grottoes, Holland, Keezletown, McGaheysville, Pamplin, Port Royal, Raphine and Windsor exchanges. Supporting documents for each exchange is attached.

If you have any questions or require additional information regarding this filing, please contact me.

Yours truly,



cc: Katie Cummings

Attachments

GENERAL CUSTOMER SERVICES TARIFF

VERIZON SOUTH INC.
VIRGINIA

Section 3
Thirteenth Revised Page 4
Cancels Twelfth Revised Page 4
EFFECTIVE: March 1, 2010

ISSUED: January 14, 2010
BY: President
Richmond, Virginia

S3. BASIC LOCAL EXCHANGE SERVICE

S3.2 Flat Rate Service (Continued)

S3.2.2 Exchange Classification and Rate Groups (Continued)

e. Rate Groups

	Rate Group 1	Rate Group 2	Rate Group 3	Rate Group 4	Rate Group 5
Individual Access Line Residence (R1/74864)	\$ 11.38	\$ 11.89	\$12.73	\$13.64	\$14.65
Business (B1/11135)	18.85	21.50	21.50	26.10	28.70
Business 24-Month Term*	17.00	20.00	20.00	23.50	26.00
Automatic Access Line PBX Trunk 1-10 Lines (AALB/11823) 24-Month Term*	38.95	44.55	44.55	52.25	57.35
11+ Lines (AALB11+/10280) 24-Month Term*	35.00	40.00	40.00	47.00	52.00
	33.30	37.90	37.90	44.55	48.65
	30.00	35.00	35.00	39.50	43.50

Rate Group 1	Rate Group 2	Rate Group 3	Rate Group 4	Rate Group 5
1-2,000	2,001-4,000	4,001-8,000	8,001-15,000	15,001-30,000
			Alberta Doswell ^{A, B} (C)	Big Prater Big Rock Boydton Callao ^{A, B} (C) Charlotte Court House Chase City Clarksville Dahlgren ^{A, B} Drakes Branch Hurley Irvington Jarratt Maxie Reedville Warsaw

Note A: Residential basic telephone services under the exchanges (in bold print) are Competitive and priced as indicated under Tariff 220.
Note B: Business basic telephone services under the exchanges (in bold print) are Competitive and priced as indicated under Tariff 220.

* Termination Liability language is specified in Section S3.4.4.1 of this Tariff.

GENERAL CUSTOMER SERVICES TARIFF

VERIZON SOUTH INC.
VIRGINIA

Section 3
Twentieth Revised Page 5
Cancels Nineteenth Revised Page 5
EFFECTIVE: March 1, 2010

ISSUED: January 14, 2010
BY: President
Richmond, Virginia

S3. BASIC LOCAL EXCHANGE SERVICE

S3.2 Flat Rate Service (Continued)

S3.2.2 Exchange Classification and Rate Groups (Continued)

e. Rate Groups (Continued)

	Rate Group 6	Rate Group 7	Rate Group 8	Rate Group 9	Rate Group 10
Individual Access Line Residence (R1/74864)	\$15.59	\$16.71	\$16.87	\$16.87	\$16.87
Business (B1/11135)	30.75	33.75	35.85	37.90	37.90
Business 24-Month Term**	28.00	31.00	33.00	35.00	35.00
Automatic Access Line PBX Trunk	62.00	66.60	71.75	76.35	76.35
1-10 Lines (AALB/11823) 24-Month Term**	56.50	61.00	66.00	70.50	70.50
11+ Lines (AALB11+10280)	52.75	56.85	60.95	65.00	65.00
24-Month Term**	47.50	51.50	55.50	59.50	59.50

Rate Group 6 30,001- 50,000	Rate Group 7 50,001-100,000	Rate Group 8 100,001- 300,000	Rate Group 9 300,001- 1,000,000	Rate Group 10 1,000,001- Over
Barnesville Bluefield Dendron Dwight Grundy Hague Heathsville ^B Kilmarnock Lawrenceville Montross ^B Pocahontas South Brunswick	Boykins Capron Courtland Edom Emporia ^B Famham Harrisonburg ^{A,B} Ivor ^B Keezletown ^{A,B} (C) Keysville King William Ladysmith ^B Lively Mathews Oakwood Richlands Rocky Gap Tazewell Wakefield	Amherst ^B Appomattox ^B Bridgewater ^{A,B} (C) Broadway ^B Dawn Dayton ^{A,B} (C) Deltaville Disputanta Elkton ^{A,B} (C) Eppes Fork Grottoes ^{A,B} (C) Hinton Jewell Ridge King & Queen McGaheysville ^{A,B} (C) Raphine ^{A,B} (C) Saluda Tappahannock ^B Weyers Cave ^{A,B}	Allwood Bowling Green Chancellor ^B Claremont Colonial Beach Gladstone Hayes ^{A,B} King George ^B Pamplin ^A (C) Port Royal ^{A,B} (C) Stony Creek	Arcola ^{A,B} Chuckatuck ^A (C) Crittenden ^{A,B} (C) Dale City ^{A,B} Dulles ^{A,B} (C) Dulles Metro ^{A,B} (C) Franklin ^B Gloucester ^A Great Bridge ^{A,B} Hanover Haymarket ^{A,B} Hickory ^{A,B} Holland ^A (C) Independent Hill ^{A,B} Lorton ^{A,B} Lorton Metro ^{A,B} Manassas ^{A,B} Nokesville ^{A,B} Occoquan ^{A,B} Old Church ^A Princess Anne ^{A,B} Smithfield ^B Stafford ^{A,B} Surry Triangle ^{A,B} Windsor ^{A,B} (C)

*Refer to 3.2.3

Note A: Residential basic telephone services under the exchanges (in bold print) are Competitive and priced as indicated under Tariff 220.

Note B: Business basic telephone services under the exchanges (in bold print) are Competitive and priced as indicated under Tariff 220.

** Termination Liability language is specified in Section S3.4.4.1 of this Tariff.

GENERAL CUSTOMER SERVICES TARIFF

VERIZON SOUTH INC.
VIRGINIA

Section 3
Seventeenth Revised Page 6
Cancels Sixteenth Revised Page 6
EFFECTIVE: March 1, 2010

ISSUED: January 14, 2010
BY: President
Richmond, Virginia

S3. BASIC LOCAL EXCHANGE SERVICE

S3.2 Flat Rate Service (Continued)

S3.2.3 Rates

- a. The rates shown below are billed monthly in advance. A customer's billing cycle, regardless of the number of days in the month, is considered to be thirty (30) days.
- b. The Automatic Access Line 1-10 Lines rate applies to the first ten (1st 10) lines and the 11+ Lines rate applies to the eleventh and over lines, i.e., if a customer has 18 PBX lines, the 1-10 Lines rate applies to the first ten lines and the 11+ Lines rate applies to the eleventh through the eighteenth lines.
- c. See Section S2.6 for rules and regulations pertaining to the movement of exchanges to a different Rate Group.

GSEC/IOSC:	Rate Group	Individual Access Line		Automatic Access Line (PBX Trunk)	
		Residence R1/74864	Business ³ B1/11135	1-10 Lines ³ AALB/11823	11+ Lines ³ AALB11+/10280
Alberta	4	\$ 13.64	\$ 26.10	\$ 52.25	\$ 44.55
Allwood	9	16.87	37.90	76.35	65.00
Amherst^B (includes Sweet Briar)	8	16.87	35.85	71.75	60.95
Appomattox^B	8	16.87	35.85	71.75	60.95
Arcola^{A,B} ELS Adder ¹	10	16.87 +0.55 17.42	37.90 +1.22 39.12	76.35 +2.47 78.82	65.00 +2.10 67.10
Barnesville	6	15.59	30.75	62.00	52.75
Big Prater ELS Adder ²	5	14.65 +0.02 14.67	28.70 +0.04 28.74	57.35 +0.04 57.39	48.65 +0.04 48.69
Big Rock	5	14.65	28.70	57.35	48.65
Bluefield	6	15.59	30.75	62.00	52.75
Bowling Green	9	16.87	37.90	76.35	65.00
Boydton	5	14.65	28.70	57.35	48.65
Boykins	7	16.71	33.75	66.60	56.85
Bridgewater^{A,B}	8	16.87	35.85	71.75	60.95
Broadway^B	8	16.87	35.85	71.75	60.95

Note¹ Arcola Extended Local Service (ELS) adder provides for unlimited calling to Washington, D.C.

Note² Big Prater Extended Local Service (ELS) adder provides for unlimited calling to Jewell Ridge.

Note³ Term Rates can be located on Pages 4 & 5.

Note ^A: Residential basic telephone services under the exchanges (in bold print) are Competitive and priced as indicated under Tariff 220.

Note ^B: Business basic telephone services under the exchanges (in bold print) are Competitive and priced as indicated under Tariff 220.

(C)

GENERAL CUSTOMER SERVICES TARIFF

VERIZON SOUTH INC.
VIRGINIA

Section 3
Fifteenth Revised Page 7
Cancels Fourteenth Revised Page 7
EFFECTIVE: March 1, 2010

ISSUED: January 14, 2010
BY: President
Richmond, Virginia

S3. BASIC LOCAL EXCHANGE SERVICE

S3.2 Flat Rate Service (Continued)

S3.2.3 Rates (Continued)

GSEC/IOSC:	Rate Group	Individual Access Line		Automatic Access Line (PBX Trunk)		
		Residence R1/74864	Business ³ B1/11135	1-10 Lines ³ AALB/11823	11+ Lines ³ AALB11+/10280	
Callao ^{A,B}	5	\$ 14.65	\$ 28.70	\$ 57.35	\$ 48.65	(C)
Capron	7	16.17	33.75	66.60	56.85	
Chancellor ^B	9	16.87	37.90	76.35	65.00	
Charlotte Court House	5	14.65	28.70	57.35	48.65	
Chase City	5	14.65	28.70	57.35	48.65	
Chuckatuck ^A	10	16.87	37.90	76.35	65.00	(C)
Claremont	9	16.87	37.90	76.35	65.00	
Clarksville	5	14.65	28.70	57.35	48.65	
Colonial Beach	9	16.87	37.90	76.35	65.00	
Courtland	7	16.71	33.75	66.60	56.85	
Crittenden ^{A,B}	10	16.87	37.90	76.35	65.00	(C)
Dahlgren ^{A,B}	5	14.65	28.70	57.35	48.65	
Dale City ^{A,B} (includes Hoadly)	10	16.87	37.90	76.35	65.00	
Dawn	8	16.87	35.85	71.75	60.95	
Dayton ^{A,B}	8	16.87	35.85	71.75	60.95	(C)
Deltaville	8	16.87	35.85	71.75	60.95	
Dendron	6	15.59	30.75	62.00	52.75	
Disputanta ELS Adder ²	8	16.87 .13 17.00	35.85 .30 36.15	71.75 .60 72.35	60.95 .51 61.46	
Doswell ^{A,B}	4	13.64	26.10	52.25	44.55	(C)
Drakes Branch	5	14.65	28.70	57.35	48.65	
Dulles ^{1,A,B}	10	16.87	37.90	76.35	65.00	(C)

Note 1: Dulles customers can choose Flat Rate Service or Message Rate Service. Refer to Section S3.5.2 for Message Rate Service options.
 Note 2: Disputanta Extended Local Service (ELS) Adder provides for unlimited calling to Verizon Virginia's Dinwiddie Exchange.
 Note 3: Term Rates can be located on Pages 4 & 5.
 Note A: Residential basic telephone services under the exchanges (in bold print) are Competitive and priced as indicated under Tariff 220.
 Note B: Business basic telephone services under the exchanges (in bold print) are Competitive and priced as indicated under Tariff 220.

GENERAL CUSTOMER SERVICES TARIFF

VERIZON SOUTH INC.
VIRGINIA

Section 3
Tenth Revised Page 7.1
Cancels Ninth Revised Page 7.1
EFFECTIVE: March 1, 2010

ISSUED: January 14, 2010
BY: President
Richmond, Virginia

S3. BASIC LOCAL EXCHANGE SERVICE

S3.2 Flat Rate Service (Continued)

S3.2.3 Rates (Continued)

GSEC/IOSC:	Rate Group	Individual Access Line		Automatic Access Line (PBX Trunk)		
		Residence	Business ²	1-10 Lines ²	11+ Lines ²	
		R1/74864	B1/11135	AALB/11823	AALB11+/10280	
Dulles Metro^{1, A, B}	10	(Refer to Message Rate Service in Section S3.5)				(C)
Dwight	6	\$ 15.59	\$ 30.75	\$ 62.00	\$ 52.75	

Note 1: Dulles Metro customers can only subscribe to Message Rate Service - Refer to Section S3.5.2.b.

Note 2: Term Rates can be located on Pages 4 & 5.

Note A: Residential basic telephone services under the exchanges (in bold print) are Competitive and priced as indicated under Tariff 220.

Note B: Business basic telephone services under the exchanges (in bold print) are Competitive and priced as indicated under Tariff 220.

(N)

GENERAL CUSTOMER SERVICES TARIFF

VERIZON SOUTH INC.
VIRGINIA

Section 3
Seventeenth Revised Page 8
Cancels Sixteenth Revised Page 8
EFFECTIVE: March 1, 2010

ISSUED: January 14, 2010
BY: President
Richmond, Virginia

S3. BASIC LOCAL EXCHANGE SERVICE

S3.2 Flat Rate Service (Continued)

S3.2.3 Rates (Continued)

GSEC/IOSC:	Rate Group	Individual Access Line		Automatic Access Line (PBX Trunk)	
		Residence	Business ¹	1-10 Lines ¹	11+ Lines ¹
		R1/74864	B1/11135	AALB/11823	AALB11+/10280
Edom	7	\$ 16.71	\$ 33.75	\$ 66.60	\$ 56.85
Elkton ^{A,B}	8	16.87	35.85	71.75	60.95
Emporia ^B	7	16.71	33.75	66.60	56.85
Eppes Fork	8	16.87	35.85	71.75	60.95
Farnham	7	16.71	33.75	66.60	56.85
Franklin ^B	10	16.87	37.90	76.35	65.00
Gladstone	9	16.87	37.90	76.35	65.00
Gloucester ^A	10	16.87	37.90	76.35	65.00
Great Bridge ^{A,B} (includes Battlefield)	10	16.87	37.90	76.35	65.00
Grottoes ^{A,B}	8	16.87	35.85	71.75	60.95
Grundy	6	15.59	30.75	62.00	52.75
Hague	6	15.59	30.75	62.00	52.75
Hanover	10	16.87	37.90	76.35	65.00
Harrisonburg ^{A,B}	7	16.71	33.75	66.60	56.85
Hayes ^{A,B}	9	16.87	37.90	76.35	65.00
Haymarket ^{A,B}	10	16.87	37.90	76.35	65.00
Heathsville ^B	6	15.59	30.75	62.00	52.75
Hickory ^{A,B}	10	16.87	37.90	76.35	65.00

(C)

(C)

Note A: Residential basic telephone services under the exchanges (in bold print) are Competitive and priced as indicated under Tariff 220.
Note B: Business basic telephone services under the exchanges (in bold print) are Competitive and priced as indicated under Tariff 220.
Note 1: Term Rates can be located on Pages 4 & 5.

GENERAL CUSTOMER SERVICES TARIFF

VERIZON SOUTH INC.
VIRGINIA

Section 3
Fourteenth Revised Page 8.1
Cancels Thirteenth Revised Page 8.1
EFFECTIVE: March 1, 2010

ISSUED: January 14, 2010
BY: President
Richmond, Virginia

S3. BASIC LOCAL EXCHANGE SERVICE

S3.2 Flat Rate Service (Continued)

S3.2.3 Rates (Continued)

GSEC/IOSC:	Rate Group	Individual Access Line		Automatic Access Line (PBX Trunk)	
		Residence R1/74864	Business ² B1/11135	1-10 Lines ² AALB/11823	11+ Lines ² AALB11+/10280
Hinton	8	\$ 16.87	\$ 35.85	\$ 71.75	\$ 60.95
Holland^A	10	16.87	37.90	76.35	65.00
Hurley	5	14.65	28.70	57.35	48.65
Independent Hill^{A, B}	10	16.87	37.90	76.35	65.00
Irvington	5	14.65	28.70	57.35	48.65
Ivor^B	7	16.71	33.75	66.60	56.85
Jarratt	5	14.65	28.70	57.35	48.65
Jewell Ridge ELS Adder ¹	8	16.87 +00 16.87	35.85 +00 35.85	71.75 +00 71.75	60.95 +00 60.95

(C)

Note¹ Jewell Ridge Extended Local Service (ELS) provides for unlimited calling to Big Prater, Davenport, Honaker and Lebanon. An adder rate is not applicable. Cost was covered by rate regrouping.

Note ^A: Residential basic telephone services under the exchanges (in bold print) are Competitive and priced as indicated under Tariff 220.

Note ^B: Business basic telephone services under the exchanges (in bold print) are Competitive and priced as indicated under Tariff 220.

Note 2: Term Rates can be located on Pages 4 & 5.

GENERAL CUSTOMER SERVICES TARIFF

VERIZON SOUTH INC.
VIRGINIA

Section 3
Fifteenth Revised Page 9
Cancels Fourteenth Revised Page 9
EFFECTIVE: March 1, 2010

ISSUED: January 14, 2010
BY: President
Richmond, Virginia

S3. BASIC LOCAL EXCHANGE SERVICE

S3.2 Flat Rate Service (Continued)

S3.2.3 Rates (Continued)

GSEC/IOSC:	Rate Group	Individual Access Line		Automatic Access Line (PBX Trunk)		
		Residence R1/74864	Business ² B1/11135	1-10 Lines ² AALB/11823	11+ Lines ² AALB11+/10280	
Keezletown ^{A, B}	7	\$ 16.71	\$ 33.75	\$ 66.60	\$ 56.85	(C)
Keysville	7	16.71	33.75	66.60	56.85	
Kilmarnock	6	15.59	30.75	62.00	52.75	
King George ^B	9	16.87	37.90	76.35	65.00	
King & Queen	8	16.87	35.85	71.75	60.95	
King William	7	16.71	33.75	66.60	56.85	
Ladysmith ^B	7	16.71	33.75	66.60	56.85	
Lawrenceville	6	15.59	30.75	62.00	52.75	
Lively	7	16.71	33.75	66.60	56.85	
Lorton ^{A, B}	10	16.87	37.90	76.35	65.00	
Lorton Metro ^{1, A, B}	10	(Refer to Message Rate Service in Section S3.5)				
Manassas ^{A, B}	10	16.87	37.90	76.35	65.00	
Mathews	7	16.71	33.75	66.60	56.85	
Maxie	5	14.65	28.70	57.35	48.65	
McGaheysville ^{A, B}	8	16.87	35.85	71.75	60.95	(C)
Montross ^B	6	15.59	30.75	62.00	52.75	
Nokesville ^{A, B}	10	16.87	37.90	76.35	65.00	
Oakwood	7	16.71	33.75	66.60	56.85	

Note 1: Lorton Metro customers can only subscribe to Message Rate Service. Refer to Section S3.5.3.b.

Note ^A: Residential basic telephone services under the exchanges (in bold print) are Competitive and priced as indicated under Tariff 220.

Note ^B: Business basic telephone services under the exchanges (in bold print) are Competitive and priced as indicated under Tariff 220.

Note 2: Term Rates can be located on Pages 4 & 5.

GENERAL CUSTOMER SERVICES TARIFF

VERIZON SOUTH INC.
VIRGINIA

Section 3
Fifteenth Revised Page 9.1
Cancels Fourteenth Revised Page 9.1
EFFECTIVE: March 1, 2010

ISSUED: January 14, 2010
BY: President
Richmond, Virginia

S3. BASIC LOCAL EXCHANGE SERVICE

S3.2 Flat Rate Service (Continued)

S3.2.3 Rates (Continued)

GSEC/IOSC:	Rate Group	Individual Access Line		Automatic Access Line (PBX Trunk)	
		Residence R1/74864	Business ¹ B1/11135	1-10 Lines ¹ AALB/11823	11+ Lines ¹ AALB11+/10280
Occoquan ^{A, B} (includes Woodbridge)	10	\$ 16.87	\$ 37.90	\$ 76.35	\$ 65.00
Old Church ^A	10	16.87	37.90	76.35	65.00
Pamplin ^A	9	16.87	37.90	76.35	65.00
Pocahontas	6	15.59	30.75	62.00	52.75
Port Royal ^{A, B}	9	16.87	37.90	76.35	65.00
Princess Anne ^{A, B} (includes Pungo and Shipps Comer)	10	16.87	37.90	76.35	65.00

(C)

(C)

Note 1: Term Rates can be located on Pages 4 & 5.

Note A: Residential basic telephone services under the exchanges (in bold print) are Competitive and priced as indicated under Tariff 220.

Note B: Business basic telephone services under the exchanges (in bold print) are Competitive and priced as indicated under Tariff 220.

GENERAL CUSTOMER SERVICES TARIFF

VERIZON SOUTH INC.
VIRGINIA

Section 3
Seventeenth Revised Page 10
Cancels Sixteenth Revised Page 10
EFFECTIVE: March 1, 2010

ISSUED: January 14, 2010
BY: President
Richmond, Virginia

S3. BASIC LOCAL EXCHANGE SERVICE

S3.2 Flat Rate Service (Continued)

S3.2.3 Rates (Continued)

GSEC/IOSC:	Rate Group	Individual Access Automatic Access Line				
		Line		(PBX Trunk)		
		Residence R1/74864	Business ³ B1/11135	1-10 Lines ³ AALB11823	11+ Lines ³ AALB11+/10280	
Raphine^{A, B}	8	\$ 16.87	\$ 35.85	\$ 71.75	\$ 60.95	(C)
Reedville	5	14.65	28.70	57.35	48.65	
Richlands ELS Adder ¹	7	16.71 + .02 16.73	33.75 + .03 33.78	66.60 .03 66.63	56.85 + .03 56.88	
Rocky Gap ELS Adder ²	7	16.71 +2.40 19.11	33.75 +4.83 38.58	66.60 +9.81 76.41	56.85 +8.32 65.17	
Saluda	8	16.87	35.85	71.75	60.95	
Smithfield^B	10	16.87	37.90	76.35	65.00	
South Brunswick	6	15.59	30.75	62.00	52.75	
Stafford^{A, B}	10	16.87	37.90	76.35	65.00	
Stony Creek	9	16.87	37.90	76.35	65.00	
Surry	10	16.87	37.90	76.35	65.00	
Tappahannock^B	8	16.87	35.85	71.75	60.95	
Tazewell	7	16.71	33.75	66.60	56.85	
Triangle^{A, B} (includes Quantico)	10	16.87	37.90	76.35	65.00	
Wakefield	7	16.71	33.75	66.60	56.85	
Warsaw	5	14.65	28.70	57.35	48.65	
Weyers Cave^{A, B}	8	16.87	35.85	71.75	60.95	
Windsor^{A, B}	10	16.87	37.90	76.35	65.00	(C)

Note 1: Richlands Extended Local Service (ELS) Adder provides for unlimited calling to Verizon Virginia's Haysi Exchange.

Note 2: Rocky Gap Extended Local Service (ELS) Adder provides for unlimited calling to Embarq's Bland Exchange.

Note 3: Term Rates can be located on Pages 4 & 5.

Note A: Residential basic telephone services under the exchanges (in bold print) are Competitive and priced as indicated under Tariff 220.

Note B: Business basic telephone services under the exchanges (in bold print) are Competitive and priced as indicated under Tariff 220.

GENERAL CUSTOMER SERVICES TARIFF

VERIZON SOUTH INC.
VIRGINIA

Section 3
Thirteenth Revised Page 32
Cancels Twelfth Revised Page 32
EFFECTIVE: March 1, 2010

ISSUED: January 14, 2010
BY: President
Richmond, Virginia

S3. BASIC LOCAL EXCHANGE SERVICE

S3.4 Optional Usage Sensitive Service (USS) (Continued)

S3.4.5 Usage Sensitive Service Rates

- a. Access Line Rates a monthly charge for the provision of incoming calls and access to the local network.

Refer to Section S2.6 for rules and regulations pertaining to the movement of exchanges to a different Rate Group.

	Rate Group 1	Rate Group 2	Rate Group 3	Rate Group 4	Rate Group 5
Individual Access Line Residence (R1USS/11944)	\$6.13	\$ 6.39	\$ 6.81	\$ 7.26	\$7.78
Business (B1USS/11917)	11.25	13.00	14.75	16.25	17.75
Business 24-Month Term*	9.50	10.75	12.50	14.00	15.50
Exchange Only Residence (M1X/75520)	10.32	10.77	11.53	12.37	13.27
Automatic Access Line (AALBUSS/75521)	27.15	30.75	33.75	37.40	41.00
24-Month Term*	23.50	27.00	30.00	33.50	37.00
Customer Owned Coin (PTAL/11939)	8.89	9.93	10.94	11.98	12.99

Rate Group 1	Rate Group 2	Rate Group 3	Rate Group 4	Rate Group 5
1-2,000	2,001-4,000	4,001-8,000	8,001-15,000	15,001-30,000
			Alberta Doswell ^{A, B} (C)	Big Prater Big Rock Boydton Callao ^{A, B} (C) Charlotte Court House Chase City Clarksville Dahlgren ^{A, B} Drakes Branch Hurley Irvington Jarratt Maxie Reedville Warsaw

* Termination Liability language is specified in Section S3.4.4.1 of this Tariff.

Note A: Residential basic telephone services under the exchanges (in bold print) are Competitive and priced as indicated under Tariff 220.

Note B: Business basic telephone services under the exchanges (in bold print) are Competitive and priced as indicated under Tariff 220.

GENERAL CUSTOMER SERVICES TARIFF

VERIZON SOUTH INC.
VIRGINIA

Section 3
Twentieth Revised Page 33
Cancels Nineteenth Revised Page 33
EFFECTIVE: March 1, 2010

ISSUED: January 14, 2010
BY: President
Richmond, Virginia

S3. BASIC LOCAL EXCHANGE SERVICE

S3.4 Optional Usage Sensitive Service (USS) (Continued)

S3.4.5 Usage Sensitive Service Rates (Continued)

a. Access Line Rates (Continued)

	Rate Group 6	Rate Group 7	Rate Group 8	Rate Group 9	Rate Group 10
Individual Access Line Residence (R1USS/11944)	\$8.20	\$ 8.74	\$ 8.74	\$ 8.74	\$ 8.74
Business (B1USS/11917)	19.45	21.00	23.00	24.50	24.50
Business 24-Month Term**	17.00	18.50	20.50	22.50	22.50
Exchange Only Residence (M1X/75520)	14.13	15.11	15.25	15.25	15.25
Automatic Access Line (AALBUSS/75521) 24-Month Term**	44.55	48.15	51.25	53.25	53.25
Customer Owned Coin (PTAL/11939)	13.98	15.03	16.03	17.08	18.09

Rate Group 6 30,001-50,000	Rate Group 7 50,001-100,000	Rate Group 8 100,001-300,000	Rate Group 9 300,001-1,000,000	Rate Group 10 1,000,001-Over
Barnesville Bluefield Dendron Dwight Grundy Hague Heathsville ^B Kilmarnock Lawrenceville Montross ^B Pocahontas South Brunswick	Boykins Capron Courtland Edom Emporia ^B Famham Harrisonburg ^{A, B} Ivor ^B Keezletown ^{A, B} (C) Keysville King William Ladysmith ^B Lively Mathews Oakwood Richlands Rocky Gap Tazewell Wakefield	Amherst ^B Appomattox ^B Bridgewater ^{A, B} (C) Broadway ^B Dawn Dayton ^{A, B} (C) Deltaville Disputanta Elkton ^{A, B} (C) Eppes Fork Grottoes ^{A, B} (C) Hinton Jewell Ridge King & Queen McGaheysville ^{A, B} (C) Raphine ^{A, B} (C) Saluda Tappahannock ^B Weyers Cave ^{A, B}	Allwood Bowling Green Chancellor ^B Claremont Colonial Beach Gladstone Hayes ^{A, B} King George ^B Pamplin ^A (C) Port Royal ^{A, B} (C) Stony Creek	Arcola ^{A, B} Chuckatuck ^A (C) Crittenden ^{A, B} (C) Dale City ^{A, B} Dulles ^{A, B} (C) Dulles Metro ^{A, B} (C) Franklin ^B Gloucester ^A Great Bridge ^{A, B} Hanover Haymarket ^{A, B} Hickory ^{A, B} Holland ^A (C) Independent Hill ^{A, B} Lorton ^{A, B} Lorton Metro ^{A, B} Manassas ^{A, B} Nokesville ^{A, B} Occoquan ^{A, B} Old Church ^A Princess Anne ^{A, B} Smithfield ^B Stafford ^{A, B} Surry Triangle ^{A, B} Windsor ^{A, B} (C)

* Refer to 3.4.5

** Termination Liability language is specified in Section S3.4.4.1 of this Tariff.

Note A: Residential basic telephone services under the exchanges (in bold print) are Competitive and priced as indicated under Tariff 220.

Note B: Business basic telephone services under the exchanges (in bold print) are Competitive and priced as indicated under Tariff 220.

GENERAL CUSTOMER SERVICES TARIFF

VERIZON SOUTH INC.
VIRGINIA

Section 3
Fifteenth Revised Page 34
Cancels Fourteenth Revised Page 34
EFFECTIVE: March 1, 2010

ISSUED: January 14, 2010
BY: President
Richmond, Virginia

S3. BASIC LOCAL EXCHANGE SERVICE

S3.4 Optional Usage Sensitive Service (USS) (Continued)

S3.4.5 Usage Sensitive Service Rates (Continued)

a. Access Line Rates (Continued)

GSEC/ IOSC	Rate Group	Individual Access Line		Automatic Access Line (PBX Trunk) ² AALBUSS/ 75521	Exchange Only	Customer Owned
		Residence R1USS/ 11944	Business ² 1USS/ 11917		Residence MIX/75520	Coin PTAL/11939
Alberta	4	\$ 7.26	\$ 16.25	\$ 37.40	\$ 12.37	\$11.98
Allwood	9	8.74	24.50	53.25	15.25	17.08
Amherst^B (includes Sweet Briar)	8	8.74	23.00	51.25	15.25	16.03
Appomattox^B	8	8.74	23.00	51.25	15.25	16.03
Arcola^{A, B} ELS Adder ¹	10	8.74 +.27 9.01	24.50 +.73 25.23	53.25 +1.59 54.84	15.25 +.46 15.71	18.09 +.60 18.69
Barnesville	6	8.20	19.45	44.55	14.13	13.98
Big Prater	5	7.78	17.75	41.00	13.27	12.99
Big Rock	5	7.78	17.75	41.00	13.27	12.99
Bluefield	6	8.20	19.45	44.55	14.13	13.98
Bowling Green	9	8.74	24.50	53.25	15.25	17.08
Boydton	5	7.78	17.75	41.00	13.27	12.99
Boykins	7	8.74	21.00	48.15	15.11	15.03
Bridgewater^{A, B}	8	8.74	23.00	51.25	15.25	16.03 (C)
Broadway^B	8	8.74	23.00	51.25	15.25	16.03
Callao^{A, B}	5	7.78	17.75	41.00	13.27	12.99 (C)
Capron	7	8.74	21.00	48.15	15.11	15.03
Chancellor^B	9	8.74	24.50	53.25	15.25	17.08
Charlotte Court House	5	7.78	17.75	41.00	13.27	12.99

Note¹ Arcola Extended Local Service (ELS) adder provides for measured calling to Washington, D.C.

Note² Term Rates can be located on Pages 32 & 33.

Note ^A: Residential basic telephone services under the exchanges (in bold print) are Competitive and priced as indicated under Tariff 220.

Note ^B: Business basic telephone services under the exchanges (in bold print) are Competitive and priced as indicated under Tariff 220.

GENERAL CUSTOMER SERVICES TARIFF

VERIZON SOUTH INC.
VIRGINIA

Section 3
Fifteenth Revised Page 35
Cancels Fourteenth Revised Page 35
EFFECTIVE: March 1, 2010

ISSUED: January 14, 2010
BY: President
Richmond, Virginia

S3. BASIC LOCAL EXCHANGE SERVICE

S3.4 Optional Usage Sensitive Service (USS) (Continued)

S3.4.5 Usage Sensitive Service Rates (Continued)

a. Access Line Rates (Continued)

GSEC/ IOSC	Rate Group	Individual Access Line		Automatic Access Line (PBX Trunk) ² AALBUSS/ 75521	Exchange Only Residence MIX/75520	Customer Owned Coin PTAL/11939	
		Residence	Business ²				
		R1USS/ 11944	1USS/ 11917				
Chase City	5	\$ 7.78	\$ 17.75	\$ 41.00	\$ 13.27	\$ 12.99	
Chuckatuck^A	10	8.74	24.50	53.25	15.25	18.09	(C)
Claremont	9	8.74	24.50	53.25	15.25	17.08	
Clarksville	5	7.78	17.75	41.00	12.88	12.99	
Colonial Beach	9	8.74	24.50	53.25	15.25	17.08	
Courtland	7	8.74	21.00	48.15	14.66	15.03	
Crittenden^{A, B}	10	8.74	24.50	53.25	15.25	18.09	(C)
Dahlgren^{A, B}	5	7.78	17.75	41.00	13.27	12.99	
Dale City^{A, B} (includes Hoadly)	10	8.74	24.50	53.25	15.25	18.09	
Dawn	8	8.74	23.00	51.25	15.25	16.03	
Dayton^{A, B}	8	8.74	23.00	51.25	15.25	16.03	(C)
Dellaville	8	8.74	23.00	51.25	15.25	16.03	
Dendron	6	8.20	19.45	44.55	14.13	13.98	
Disputanta ELS Adder ¹	8	8.74 .07 <u>8.81</u>	23.00 .19 <u>23.19</u>	51.25 .42 <u>51.67</u>	15.25 .12 <u>15.37</u>	16.03 .16 <u>16.19</u>	
Doswell^{A, B}	4	7.26	16.25	37.40	12.37	11.98	(C)
Drakes Branch	5	7.78	17.75	41.00	13.27	12.99	
Dulles^{A, B}	10	(USS Not Applicable - Refer to Message Rate Service in Section S3.5)					(C)
Dulles Metro^{A, B}	10	(USS Not Applicable - Refer to Message Rate Service in Section S3.5)					(C)
Dwight	6	8.20	19.45	44.55	14.13	13.98	
Edom	7	8.74	21.00	48.15	15.11	15.03	
Elkton^{A, B}	8	8.74	23.00	51.25	15.25	16.03	(C)
Emporia^B	7	8.74	21.00	48.15	15.11	15.03	
Eppes Fork	8	8.74	23.00	51.25	15.25	16.03	
Famham	7	8.74	21.00	48.15	15.11	15.03	

Note 1: Disputanta Extended Local Service (ELS) Adder provides for unlimited calling to Verizon Virginia's Dinwiddie Exchange.

Note 2: Term Rates can be located on Pages 32 & 33.

Note ^A: Residential basic telephone services under the exchanges (in bold print) are Competitive and priced as indicated under Tariff 220.

Note ^B: Business basic telephone services under the exchanges (in bold print) are Competitive and priced as indicated under Tariff 220.

GENERAL CUSTOMER SERVICES TARIFF

VERIZON SOUTH INC.
VIRGINIA

Section 3
Sixteenth Revised Page 36
Cancels Fifteenth Revised Page 36
EFFECTIVE: March 1, 2010

ISSUED: January 14, 2010
BY: President
Richmond, Virginia

S3. BASIC LOCAL EXCHANGE SERVICE

S3.4 Optional Usage Sensitive Service (USS) (Continued)

S3.4.5 Usage Sensitive Service Rates (Continued)

a. Access Line Rates (Continued)

GSEC/ IOSC	Rate Group	Individual Access Line		Automatic Access Line (PBX Trunk) ¹ AALBUSS/ 75521	Exchange Only Residence MIX/75520	Customer Owned Coin PTAL/11939	
		Residence R1USS/ 11944	Business ¹ 1USS/ 11917				
Franklin ^B	10	\$ 8.74	\$24.50	\$53.25	\$15.25	\$18.09	
Gladstone	9	8.74	24.50	53.25	15.25	17.08	
Gloucester ^A	10	8.74	24.50	53.25	15.25	18.09	
Great Bridge ^{A, B} (includes Battlefield)	10	8.74	24.50	53.25	15.25	18.09	
Grottoes ^{A, B}	8	8.74	23.00	51.25	15.25	16.03	(C)
Grundy	6	8.20	19.45	44.55	14.13	13.98	
Hague	6	8.20	19.45	44.55	14.13	13.98	
Hanover	10	8.74	24.50	53.25	15.25	18.09	
Harrisonburg ^{A, B}	7	8.74	21.00	48.15	15.11	15.03	
Hayes ^{A, B}	9	8.74	24.50	53.25	15.25	17.08	
Haymarket ^{A, B}	10	8.74	24.50	53.25	15.25	18.09	
Heathsville ^B	6	8.20	19.45	44.55	14.13	13.98	
Hickory ^{A, B}	10	8.74	24.50	53.25	15.25	18.09	
Hinton	8	8.74	23.00	51.25	15.25	16.03	
Holland ^A	10	8.74	24.50	53.25	15.25	18.09	(C)
Hurley	5	7.78	17.75	41.00	13.27	12.99	
Independent Hill ^{A, B}	10	8.74	24.50	53.25	15.25	18.09	
Irvington	5	7.78	17.75	41.00	13.27	12.99	
Ivor ^B	7	8.74	21.00	48.15	15.11	15.03	
Jarratt	5	7.78	17.75	41.00	13.27	12.99	
Jewell Ridge	8	8.74	23.00	51.25	15.25	16.03	
Keezletown ^{A, B}	7	8.74	21.00	48.15	15.11	15.03	(C)

Note ^A Residential basic telephone services under the exchanges (in bold print) are Competitive and priced as indicated under Tariff 220.
 Note ^B Business basic telephone services under the exchanges (in bold print) are Competitive and priced as indicated under Tariff 220.
 Note ¹ Term Rates can be located on Pages 32 & 33.

GENERAL CUSTOMER SERVICES TARIFF

VERIZON SOUTH INC.
VIRGINIA

Section 3
Thirteenth Revised Page 37
Cancels Twelfth Revised Page 37
EFFECTIVE: March 1, 2010

ISSUED: January 14, 2010
BY: President
Richmond, Virginia

S3. BASIC LOCAL EXCHANGE SERVICE

S3.4 Optional Usage Sensitive Service (USS) (Continued)

S3.4.5 Usage Sensitive Service Rates (Continued)

a. Access Line Rates (Continued)

GSEC/ IOSC	Rate Group	Individual Access Line		Automatic Access Line (PBX Trunk) ¹ AALBUSS/ 75521	Exchange Only Residence MIX/75520	Customer Owned Coin PTAL/11939
		Residence R1USS/ 11944	Business ¹ 1USS/ 11917			
Keysville	7	\$ 8.74	\$21.00	\$48.15	\$ 15.11	\$15.03
Kilmarnock	6	8.20	19.45	44.55	14.13	13.98
King George^B	9	8.74	24.50	53.25	15.25	17.08
King & Queen	8	8.74	23.00	51.25	15.25	16.03
King William	7	8.74	21.00	48.15	15.11	15.03
Ladysmith^B	7	8.74	21.00	48.15	15.11	15.03
Lawrenceville	6	8.20	19.45	44.55	14.13	13.98
Lively	7	8.74	21.00	48.15	15.11	15.03
Lorton^{A, B}	10 (USS Not Applicable - Refer to Message Rate Service in Section S3.5)					
Lorton Metro^{A, B}	10 (USS Not Applicable - Refer to Message Rate Service in Section S3.5)					
Manassas^{A, B}	10	8.74	24.50	53.25	15.25	18.09
Mathews	7	8.74	21.00	48.15	15.11	15.03
Maxie	5	7.78	17.75	41.00	13.27	12.99
McGaheysville^{A, B}	8	8.74	23.00	51.25	15.25	16.03 (C)
Montross^B	6	8.20	19.45	44.55	14.13	13.98
Nokesville^{A, B}	10	8.74	24.50	53.25	15.25	18.09
Oakwood	7	8.74	21.00	48.15	15.11	15.03
Occoquan^{A, B} (includes Woodbridge)	10	8.74	24.50	53.25	15.25	18.09
Old Church^A	10	8.74	24.50	53.25	15.25	18.09
Pamplin^A	9	8.74	24.50	53.25	15.25	17.08 (C)
Pocahontas	6	8.20	19.45	44.55	14.13	13.98
Port Royal^{A, B}	9	8.74	24.50	53.25	15.25	17.08 (C)
Princess Anne^{A, B} (includes Pungo and Shipps Corner)	10	8.74	24.50	53.25	15.25	18.09

Note A: Residential basic telephone services under the exchanges (in bold print) are Competitive and priced as indicated under Tariff 220.
 Note B: Business basic telephone services under the exchanges (in bold print) are Competitive and priced as indicated under Tariff 220.
 Note 1 Term Rates can be located on Pages 32 & 33.

GENERAL CUSTOMER SERVICES TARIFF

VERIZON SOUTH INC.
VIRGINIA

Section 3
Seventeenth Revised Page 38
Cancels Sixteenth Revised Page 38
EFFECTIVE: March 1, 2010

ISSUED: January 14, 2010
BY: President
Richmond, Virginia

S3. BASIC LOCAL EXCHANGE SERVICE

S3.4 Optional Usage Sensitive Service (USS) (Continued)
S3.4.5 Usage Sensitive Service Rates (Continued)

a. Access Line Rates (Continued)

GSEC/ IOSC	Rate Group	Individual Access Line		Automatic Access Line (PBX Trunk) ¹ AALBUSS/ 75521	Exchange Only Residence MIX/75520	Customer Owned Coin PTAL/11939	
		Residence	Business ¹				
		R1USS/ 11944	B1USS/ 11917				
Raphine ^{A, B}	8	\$ 8.74	\$ 23.00	\$ 51.25	\$15.25	\$16.03	(C)
Reedville	5	7.78	17.75	41.00	13.27	12.99	
Richlands ELS Adder	7	8.74 <u>+01</u> 8.75	21.00 <u>+01</u> 21.01	48.15 <u>+01</u> 48.16	15.11 <u>+01</u> 15.12	15.03 <u>+01</u> 15.04	
Rocky Gap ELS Adder ³	7	8.74 <u>+1.26</u> 10.00	21.00 <u>+3.07</u> 24.07	48.15 <u>+6.78</u> 54.93	15.11 <u>+2.17</u> 17.28	15.03 <u>+2.59</u> 17.62	
Saluda	8	8.74	23.00	51.25	15.25	16.03	
Smithfield ^B	10	8.74	24.50	53.25	15.25	18.09	
South Brunswick	6	8.20	19.45	44.55	14.13	13.98	
Stafford ^{A, B}	10	8.74	24.50	53.25	15.25	18.09	
Stony Creek	9	8.74	24.50	53.25	15.25	17.08	
Surry	10	8.74	24.50	53.25	15.25	18.09	
Tappahannock ^B	8	8.74	23.00	51.25	15.25	16.03	
Tazewell	7	8.74	21.00	48.15	15.11	15.03	
Triangle ^{A, B} (includes Quantico)	10	8.74	24.50	53.25	15.25	18.09	
Wakefield	7	8.74	21.00	48.15	15.11	15.03	
Warsaw	5	7.78	17.75	41.00	13.27	12.99	
Weyers Cave ^{A, B}	8	8.74	23.00	51.25	15.25	16.03	
Windsor ^{A, B}	10	8.74	24.50	53.25	15.25	18.09	(C)

*** CROSS REFERENCE NOTES ***

1. The USS Business Individual Access Line rate also applies to:
Customer Owned Coin and Coinless Operated Telephone Service
as specified in Section S7.1.4.
PTAL/11939
CEN NARSM/52149
2. The USS Automatic Access Line (PBX Trunk) rate also applies to:
Shared Tenant Service - Refer to Section S24.1.3
STSAALBUSS
CEN NARM/52120
3. Rocky Gap Extended Local Service (ELS) Adder provides for unlimited calling to Embarq's Bland Exchange.
- Note A: Residential basic telephone services under the exchanges (in bold print) are Competitive and priced as indicated under Tariff 220.
Note B: Business basic telephone services under the exchanges (in bold print) are Competitive and priced as indicated under Tariff 220.
Note 1: Term Rates can be located on Pages 32 & 33.

GENERAL CUSTOMER SERVICES TARIFF

VERIZON SOUTH INC.
VIRGINIA

Section 3
Tenth Revised Page 55
Cancels Ninth Revised Page 55
EFFECTIVE: March 1, 2010

ISSUED: January 14, 2010
BY: President
Richmond, Virginia

S3. BASIC LOCAL EXCHANGE SERVICE

S3.5 Message Rate Service (Continued)

S3.5.2 Dulles Options (Continued)

b. Dulles Metro (260, 572-only for MWAA) customers must subscribe to Message Rate Service. The Dulles Metro calling scope includes calling to the Maryland Zones of the Washington Metropolitan Calling Areas.

- (1) Message Rate Service With Allowance - exchanges are identified in S3.5.5.a. following.
- (2) Message Rate Service Without Allowance (Residence only) - exchanges are identified in S3.5.5.b. following.

Note: Dulles Metro mileage sensitive rate elements are rated using the Fairfax/Vienna rate center V&H coordinates.

S3.5.3 Lorton Options

a. Lorton (446, 493, 495, 551, 649, 690) customers can choose between Flat Rate Service or Message Rate Service.

- (1) Flat Rate Service provides for unlimited calling to the exchanges listed in Section S3.2.4.
- (2) Message Rate Service With Allowance - exchanges are identified in S3.5.5.a. following.
- (3) Message Rate Service Without Allowance (Residence only) - exchanges are identified in S3.5.5.b. following.

b. Lorton Metro (643) customers must subscribe to Message Rate Service. The Lorton Metro calling scope includes calling to the Maryland Zones of the Washington Metropolitan Calling Areas.

- (1) Message Rate Service With Allowance - exchanges are identified in S3.5.5.a. following.
- (2) Message Rate Service Without Allowance (Residence only) - exchanges are identified in S3.5.5.b. following.

Note: Lorton Metro mileage sensitive rate elements are rated using the Alexandria/Arlington rate center V&H coordinates.

S3.5.4 Rates and Charges

a. Message Rate Service consists of three rate elements:

- (1) Fixed Monthly Rate for incoming service and for access to the local network
- (2) Metro Additive - a fixed monthly charge in addition to the fixed monthly rate (item (1) above) applies for access to the exchanges in the Maryland Zone of the Washington Metropolitan Calling Area.
- (3) Per Message Rate

GSEC/ IOSC:	Individual Access Line With 50 Calls Allowance	Access Business*	Individual Automatic Line Without Allowance	Access Line With 50 Calls Allowance (PBX Trunk)*	Metro Additive		Per Message		
	Residence MER/38254	MEB/38252	Residence MERC/11926	MEBH/75515	Residence EAS3/74637	Business EAS2/02499	Res	Bus	
Dulles ^{A,B}	\$11.90	\$21.00	\$8.74	\$21.00	-	-	\$.08	\$.0973	(C)
Dulles Metro ^{A,B}	11.90	21.00	8.74	21.00	\$ 7.00	\$ 10.50	\$.08	.0973	(C)
Lorton ^{A,B}	11.90	21.00	8.74	21.00	-	-	\$.08	.0973	
Lorton Metro ^{A,B}	11.90	21.00	8.74	21.00	7.00	10.50	\$.08	.0973	

* The 24-month term rate for Business Message service is \$19.00 per month. Termination Liability language is specified in Section S3.4.4.1 of this Tariffs.

Note A: Residential basic telephone services under the exchanges (in bold print) are Competitive and priced as indicated under Tariff 220.
Note B: Business basic telephone services under the exchanges (in bold print) are Competitive and priced as indicated under Tariff 220.

GENERAL CUSTOMER SERVICES TARIFF

VERIZON SOUTH INC.
VIRGINIA

Section 3
Tenth Revised Page 69
Cancels Ninth Revised Page 69
EFFECTIVE: March 1, 2010

ISSUED: January 14, 2010
BY: President
Richmond, Virginia

S3. BASIC LOCAL EXCHANGE SERVICE

S3.11 Verizon Local Calling Plan (Continued)

S3.11.3 Rates (Continued)

b. Rate Schedule (Continued)

(1) Residence Individual Access Line

	IOSC:	Basic Calling Plan 10679	Community Plus Plan 21673	Premium Plan 10669	
Alberta		\$ 9.82	\$ 15.94	\$ 36.04	
Allwood		11.04	17.47	-	
Amherst (includes Sweet Briar)		11.04	17.18	-	
Appomattox		9.82	17.18	-	
Arcola^A		-	-	-	
Barnesville		8.58	14.72	36.04	
Big Prater		7.96	14.72	36.04	
Big Rock		7.96	14.72	36.04	
Bluefield		8.58	15.94	36.04	
Bowling Green		12.00	17.47	36.04	
Boydton		7.96	14.72	36.04	
Boykins		9.82	17.18	36.04	
Bridgewater^A		-	-	-	(C)
Broadway		-	-	-	
Callao^A		7.96	15.94	-	(C)
Capron		8.58	17.18	-	
Chancellor		11.04	17.47	36.04	
Charlotte Court House		7.96	14.72	36.04	
Chase City		7.96	14.72	36.04	
Chuckatuck^A		12.00	17.47	36.04	(C)
Claremont		11.04	17.47	36.04	
Clarksville		7.96	14.72	36.04	
Colonial Beach		11.04	17.47	36.04	

Note A: Residential basic telephone services under the exchanges (in bold print) are Competitive and priced as indicated under Tariff 220.

GENERAL CUSTOMER SERVICES TARIFF

VERIZON SOUTH INC.
VIRGINIA

Section 3
Fourteenth Revised Page 70
Cancels Thirteenth Revised Page 70
EFFECTIVE: March 1, 2010

ISSUED: January 14, 2010
BY: President
Richmond, Virginia

S3. BASIC LOCAL EXCHANGE SERVICE

S3.11 Verizon Local Calling Plan (Continued)

S3.11.3 Rates (Continued)

b. Rate Schedule (Continued)

(1) Residence Individual Access Line (Continued)

	IOSC:	Basic Calling Plan 10679	Community Plus Plan 21673	Premium Plan 10669	
Courtland		\$ 7.96	\$ 15.94	-	
Crittenden^A		12.00	17.47	36.04	(C)
Dahlgren^A		11.04	17.18	36.04	
Dale City^A (includes Hoadly)		-	-	-	
Dawn		12.00	17.47	36.04	
Dayton^A		-	-	-	(C)
Deltaville		8.58	17.18	-	
Dendron		12.00	17.47	36.04	
Disputanta ELS Adder ¹		12.00 .10 <u>12.10</u>	17.47 .15 <u>17.62</u>	36.04 <u>.33</u> <u>36.37</u>	
Doswell^A		12.00	17.47	36.04	(C)
Drakes Branch		7.96	14.72	36.04	
Dulles^A		-	-	-	(C)
Dulles Metro^A		-	-	-	(C)
Dwight		8.58	15.94	-	
Edom		-	-	-	
Elkton^A		-	-	-	(C)
Emporia		11.04	17.18	36.04	
Eppes Fork		9.82	17.18	36.04	
Farnham		8.58	15.94	36.04	
Franklin		12.00	17.47	-	
Gladstone		11.04	17.47	36.04	
Gloucester^A		-	-	-	
Great Bridge^A (includes Battlefield)		-	-	-	

Note 1: Disputanta Extended Local Service (ELS) Adder provides for unlimited calling to Verizon Virginia's Dinwiddie Exchange.

Note A: Residential basic telephone services under the exchanges (in bold print) are Competitive and priced as indicated under Tariff 220.

GENERAL CUSTOMER SERVICES TARIFF

VERIZON SOUTH INC.
VIRGINIA

Section 3
Fourteenth Revised Page 71
Cancels Thirteenth Revised Page 71
EFFECTIVE: March 1, 2010

ISSUED: January 14, 2010
BY: President
Richmond, Virginia

S3. BASIC LOCAL EXCHANGE SERVICE

S3.11 Verizon Local Calling Plan (Continued)

S3.11.3 Rates (Continued)

b. Rate Schedule (Continued)

(1) Residence Individual Access Line (Continued)

IOSC:	Basic Calling Plan 10679	Community Plus Plan 21673	Premium Plan 10669	(C)
Grottoes^A	-	-	-	(C)
Grundy	\$ 8.58	\$ 17.18	-	
Hague	7.96	15.94	-	
Hanover	12.00	17.47	36.04	
Harrisonburg^A	-	-	-	
Hayes^A	12.00	17.47	-	
Haymarket^A	-	-	-	
Heathsville	7.96	15.94	-	
Hickory^A	-	-	-	
Hinton	-	-	-	
Holland^A	12.00	17.47	-	(C)
Hurley	7.96	14.72	36.04	
Independent Hill^A	-	-	-	
Irvington	7.96	14.72	36.04	
Ivor	12.00	17.47	36.04	
Jarratt	9.82	15.94	36.04	
Jewell Ridge	8.58	17.18	36.04	
Keezletown^A	-	-	-	(C)
Keysville	8.58	15.94	36.04	
Kilmarnock	7.96	15.94	-	
King George	11.04	17.47	-	
King & Queen	12.00	17.47	36.04	
King William	12.00	17.47	36.04	

Note A: Residential basic telephone services under the exchanges (in bold print) are Competitive and priced as indicated under Tariff 220.

GENERAL CUSTOMER SERVICES TARIFF

VERIZON SOUTH INC.
VIRGINIA

Section 3
Thirteenth Revised Page 72
Cancels Twelfth Revised Page 72
EFFECTIVE: March 1, 2010

ISSUED: January 14, 2010
BY: President
Richmond, Virginia

S3. BASIC LOCAL EXCHANGE SERVICE

S3.11 Verizon Local Calling Plan (Continued)

S3.11.3 Rates (Continued)

b. Rate Schedule (Continued)

(1) Residence Individual Access Line (Continued)

	IOSC:	Basic Calling Plan 10679	Community Plus Plan 21673	Premium Plan 10669	
Ladysmith		\$ 12.00	\$ 17.47	\$ 36.04	
Lawrenceville		9.82	17.18	36.04	
Lively		8.58	15.94	-	
Lorton^A		-	-	-	
Lorton Metro^A		-	-	-	
Manassas^A		-	-	-	
Mathews		11.04	17.18	36.04	
Maxie		7.96	14.72	36.04	
McGaheysville^A		-	-	-	(C)
Montross		7.96	15.94	-	
Nokesville^A		-	-	-	
Oakwood		8.58	15.94	-	
Occoquan (includes Woodbridge)		-	-	-	
Old Church^A		12.00	17.47	36.04	
Pamplin^A		11.04	17.47	36.04	(C)
Pocahontas		8.58	15.94	36.04	
Port Royal^A		11.04	17.47	36.04	(C)
Princess Anne^A (includes Pungo and Shipp's Corner)		-	-	-	
Raphine^A		9.82	17.18	36.04	(C)
Reedville		7.96	14.72	36.04	
Richlands		8.58	17.18	36.04	
ELS Adder		<u>+01</u>	<u>+02</u>	<u>+02</u>	
		8.59	17.20	36.06	
Rocky Gap		8.58	15.94	34.96	
ELS Adder ¹		<u>0</u>	<u>+2.46</u>	<u>0</u>	
		8.58	18.40	36.04	

Note 1 Rocky Gap Extended Local Service (ELS) Adder provides for unlimited calling to Embarq's Bland Exchange.

Note A: Residential basic telephone services under the exchanges (in bold print) are Competitive and priced as indicated under Tariff 220.

GENERAL CUSTOMER SERVICES TARIFF

VERIZON SOUTH INC.
VIRGINIA

Section 3
Thirteenth Revised Page 73
Cancels Twelfth Revised Page 73
EFFECTIVE: March 1, 2010

ISSUED: January 14, 2010
BY: President
Richmond, Virginia

S3. BASIC LOCAL EXCHANGE SERVICE

S3.11 Verizon Local Calling Plan (Continued)

S3.11.3 Rates (Continued)

- b. Rate Schedule (Continued)
(1) Residence Individual Access Line (Continued)

	IOSC:	Basic Calling Plan 10679	Community Plus Plan 21673	Premium Plan 10669
Saluda		\$ 9.82	\$ 17.18	\$ -
Smithfield		12.00	17.47	-
South Brunswick		7.96	15.94	36.04
Stafford^A		-	-	-
Stony Creek		11.04	17.47	36.04
Surry		11.65	17.47	36.04
Tappahannock		8.58	17.18	-
Tazewell		8.58	17.18	-
Triangle^A (includes Quantico)		-	-	-
Wakefield		12.00	17.47	36.04
Warsaw		8.58	15.94	36.04
Weyers Cave^A		-	-	-
Windsor^A		12.00	17.47	-

(C)

Note A: Residential basic telephone services under the exchanges (in bold print) are Competitive and priced as indicated under Tariff 220.

COMPETITIVE PRICED LOCAL EXCHANGE SERVICES TARIFF - No. 220

VERIZON SOUTH INC.
VIRGINIA

Section 1B
Fifth Revised Page 1
Cancels Fourth Revised Page 1
EFFECTIVE: MARCH 1, 2010

ISSUED: JANUARY 14, 2010
BY: President
Richmond, Virginia

EXCHANGE PRICES - RESIDENTIAL

Residential Dialtone Service Price (Per Month, usage indicated where applicable)

<u>Exchange</u>	<u>Flat Rate (Unlimited)</u>	<u>Usage Sensitive Service¹ (US\$)</u>	<u>Exchange Only¹</u>	<u>Message Rate¹ (50 Call Allowance)</u>	<u>Message Rate¹ (No Call Allowance)</u>	
Arcola	\$17.37	\$9.48	\$15.80	-	-	(N)
Bridgewater*						
Callao*						(N)
Chuckatuck*						
Crittenden*						(N)
Dahlgren*						
Dale City	\$17.37	\$9.48	\$15.80	-	-	(N)
Dayton*						
Doswell*						(N)
Dulles*						
Dulles Metro*						(N)
Elkton*						
Gloucester	\$17.37	\$9.48	\$15.80	-	-	
Great Bridge	\$17.37	\$9.48	\$15.80	-	-	
Grottoes*						(N)
Harrisonburg						
Haymarket	\$17.37	\$9.48	\$15.80	-	-	
Hayes	\$17.37	\$9.48	\$15.80	-	-	
Hickory	\$17.37	\$9.48	\$15.80	-	-	
Holland*						(N)
Independent Hill	\$17.37	\$9.48	\$15.80	-	-	
Keezletown*						(N)
Lorton	\$17.37	\$9.48	\$15.80	\$11.90	\$8.74	
Lorton Metro	\$17.37	\$9.48	\$15.80	\$11.90	\$8.74	
Manassas	\$17.37	\$9.48	\$15.80	-	-	
McGaheysville*						(N)
Nokesville	\$17.37	\$9.48	\$15.80	-	-	
						(M)
						(M)
						(N)

(M) - Indicates materials moved to Original Sheet 1.1.

Note 1: For Usage options and Charges see General Customer Services Tariff, Sections 3.4 and 3.5.

Note 2: Listed rates were previously found in General Customer Services Tariff, Sections 3.2, 3.4, and 3.5.

* For current rates, see General Customer Service Tariff, Sections 3.2 thru 3.5.

COMPETITIVE PRICED LOCAL EXCHANGE SERVICES TARIFF - No. 220

VERIZON SOUTH INC.
VIRGINIA

Section 1B
Original Page 1.1

SSUED: JANUARY 14, 2010
BY: President
Richmond, Virginia

EFFECTIVE: MARCH 1, 2010

EXCHANGE PRICES - RESIDENTIAL

Residential Dialtone Service Price (Per Month, usage indicated where applicable)

<u>Exchange</u>	<u>Flat Rate</u> <u>(Unlimited)</u>	<u>Usage Sensitive</u> <u>Service¹</u> <u>(US\$)</u>	<u>Exchange Only¹</u>	<u>Message Rate¹</u> <u>(50 Call</u> <u>Allowance)</u>	<u>Message Rate¹</u> <u>(No Call</u> <u>Allowance)</u>	
Occoquan	\$17.37	\$9.48	\$15.80	-	-	(M)
Old Church	\$17.37	\$9.48	\$15.80	-	-	(M)
Pamplin*						(N)
Port Royal*						(N)
Princess Anne	\$17.37	\$9.48	\$15.80	-	-	(M)
Raphine*						(N)
Stafford	\$17.37	\$9.48	\$15.80	-	-	(M)
Triangle						(M)
Weyers Cave						(M)
Windsor*						(N)

(M) – Indicates materials moved from Sheet 1.

(N)

Note 1: For Usage options and Charges see General Customer Services Tariff, Sections 3.4 and 3.5.

Note 2: Listed rates were previously found in General Customer Services Tariff, Sections 3.2, 3.4, and 3.5.

For current rates, see General Customer Service Tariff, Sections 3.2 thru 3.5.

ISSUED: JANUARY 14, 2010
BY: President
Richmond, Virginia

OPTIONAL LOCAL CALLING PLAN PRICES - RESIDENTIAL

Residential Dialtone Service Price (Per Month)

Exchange	BASIC ¹	COMMUNITY PLUS ¹	PREMIUM	
	(For current rates in listed exchanges, see General Customer Services Tariff, Section 3.11)			
Arcola				(N)
Bridgewater				(N)
Callao				
Chuckatuck				
Crittenden				(N)
Dahlgren				
Dale City				
Dayton				(N)
Doswell				
Dulles				
Dulles Metro				(N)
Elkton				(N)
Gloucester				
Great Bridge				
Grottoes				(N)
Harrisonburg				
Haymarket				
Hayes				
Hickory				
Holland				(N)
Independent Hill				
Keezletown				(N)
Lorton				
Lorton Metro				
Manassas				
McGaheysville				(N)
Nokesville				
Occoquan				
Old Church				
Pamplin				(N)
Port Royal				(N)
Princess Anne				
Raphine				(N)
Stafford				
Triangle				
Weyers Cave				
Windsor				(N)

Note 1: For Usage options and Charges see General Customer Services Tariff, Section 3.11.

Competitiveness Test

Bridgewater, Callao, Chuckatuck, Crittenden, Dayton, Doswell, Dulles, Elkton, Grottoes, Holland, Keezletown, McGaheysville, Pamplin, Port Royal, Raphine and Windsor Exchanges

Step A

A minimum of 75% of the households in the telephone exchange area can choose telephone service from among at least two (2) competitors to Verizon

This test is met by the combined coverage of a number of competitors, including AT&T Wireless, nTelos Wireless, Sprint, T-Mobile and U.S. Cellular. (See Attachment A).

Step B

A minimum of two (2) of the competitors to Verizon in “Step A” must offer local telephone service that may be purchased by the household without a corresponding requirement to purchase non-telecommunications services (e.g., video or broadband internet service) from that competitor.

This test is met by the combined coverage of a number of competitors, including AT&T Wireless, nTelos Wireless, Sprint, T-Mobile and U.S. Cellular. (See Attachment A).

Step C

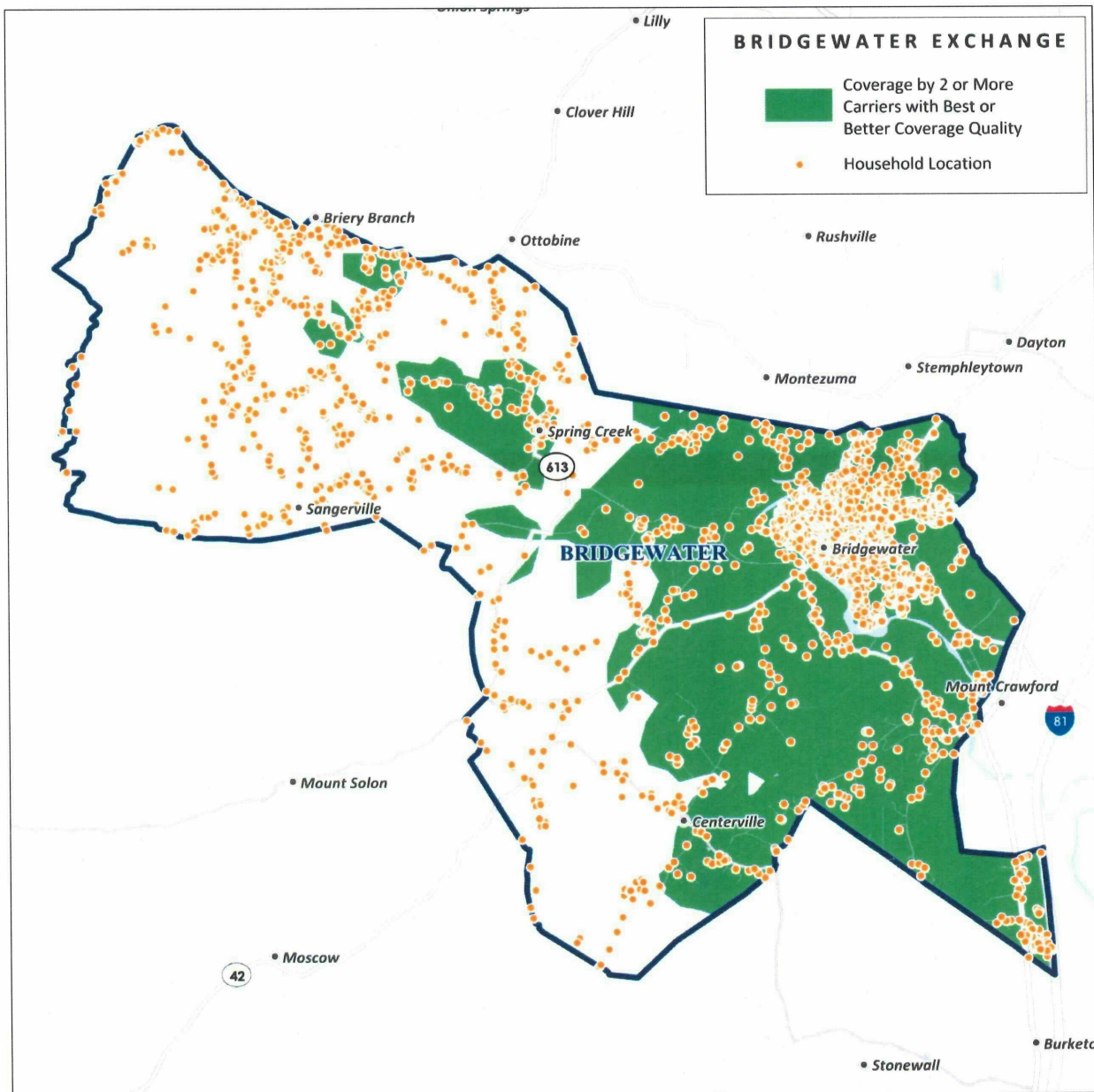
At least 50% of the households in the telephone exchange area can choose a facilities-based competitor that owns its own wireline network facilities

This test is met by the combined coverage of a number of competitors, including AT&T Wireless, nTelos Wireless, Sprint, T-Mobile and U.S. Cellular. (See Attachment A).

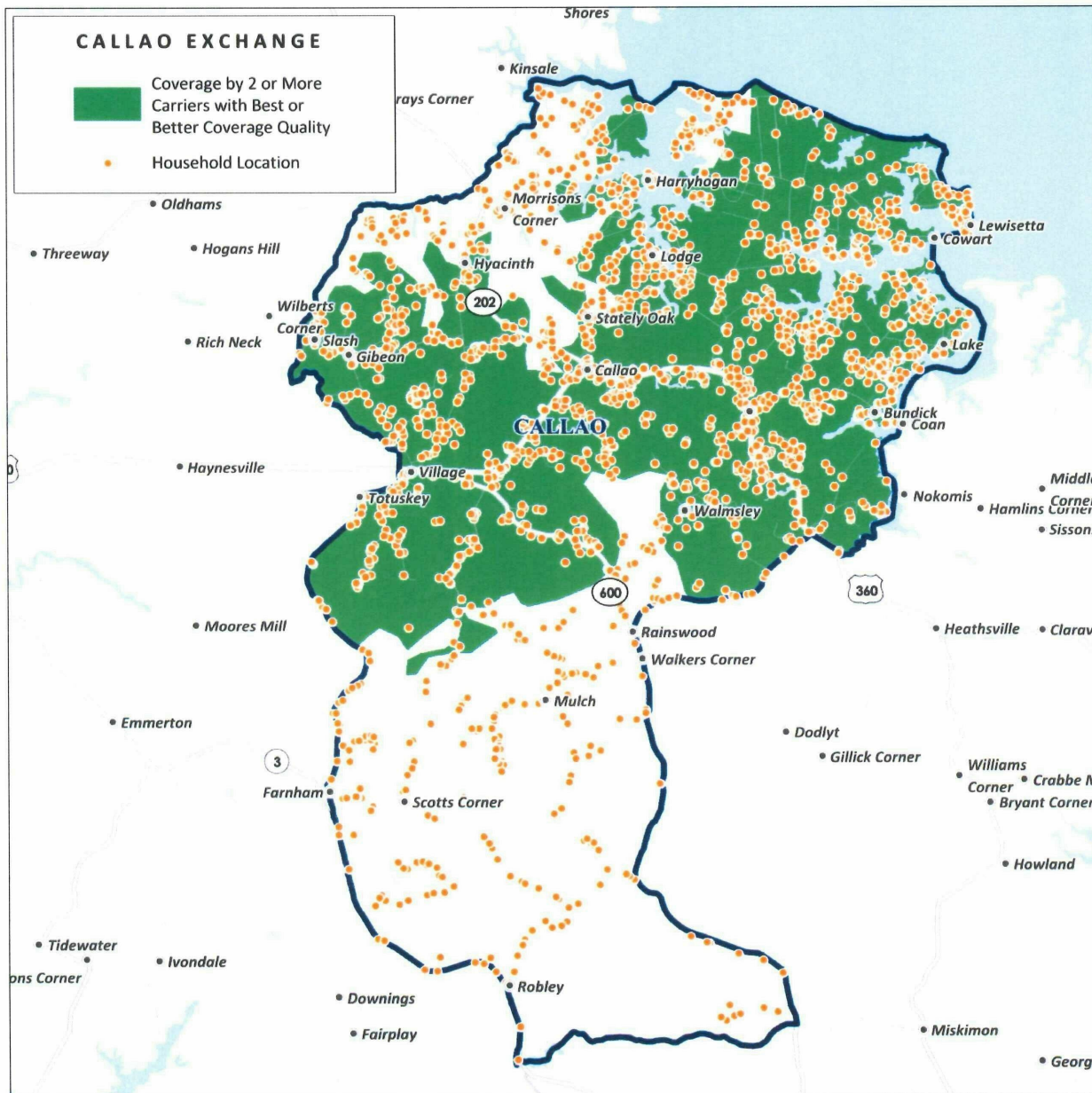
ATTACHMENT A

**Bridgewater, Callao, Chuckatuck, Crittenden, Dayton,
Doswell, Dulles, Elkton, Grottoes, Holland, Keezletown,
McGaheysville, Pamplin, Port Royal, Raphine and
Windsor Exchanges**

Bridgewater – 2+ carriers with Best/Better coverage



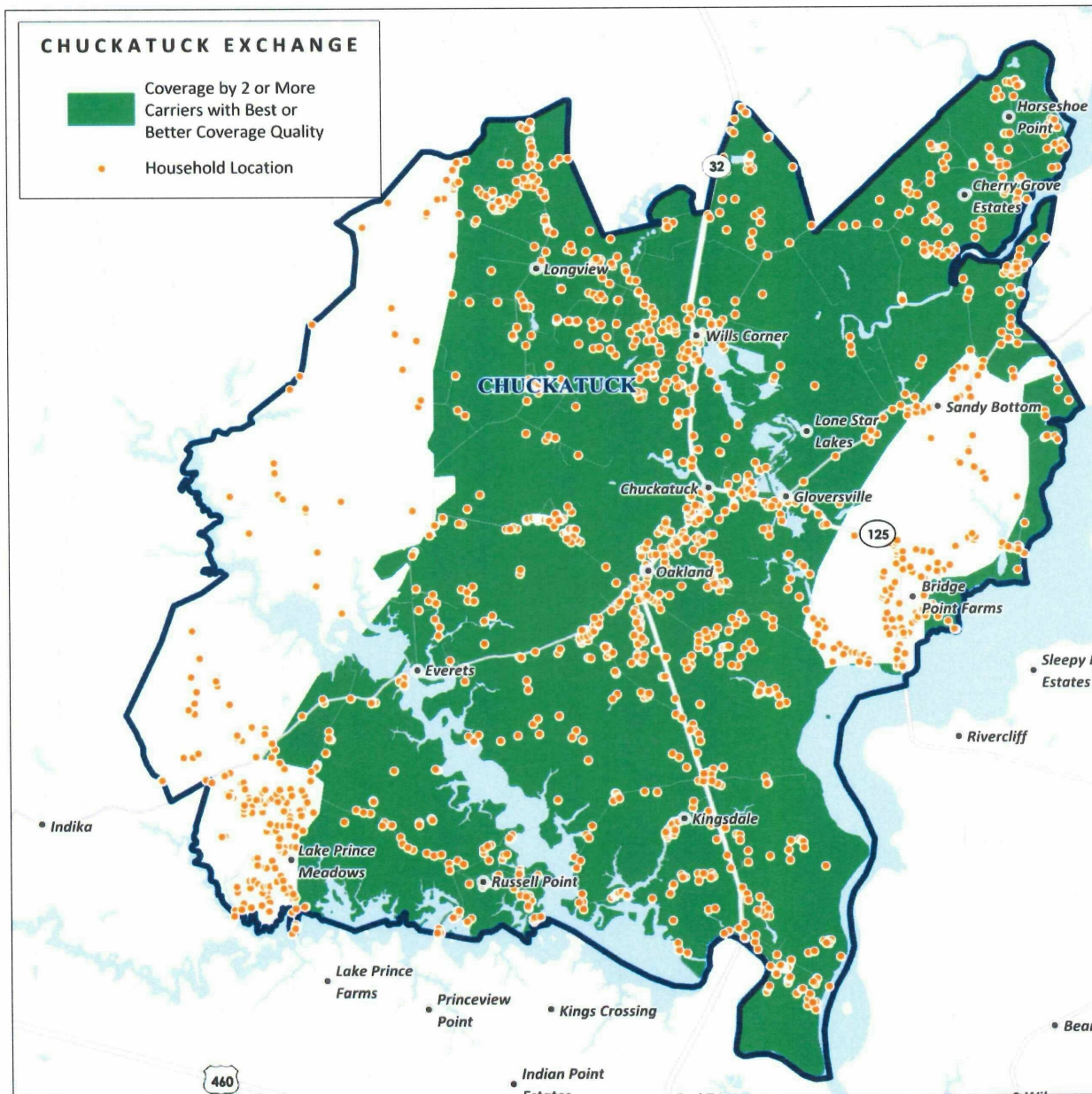
Callao – 2+ carriers with Best/Better coverage



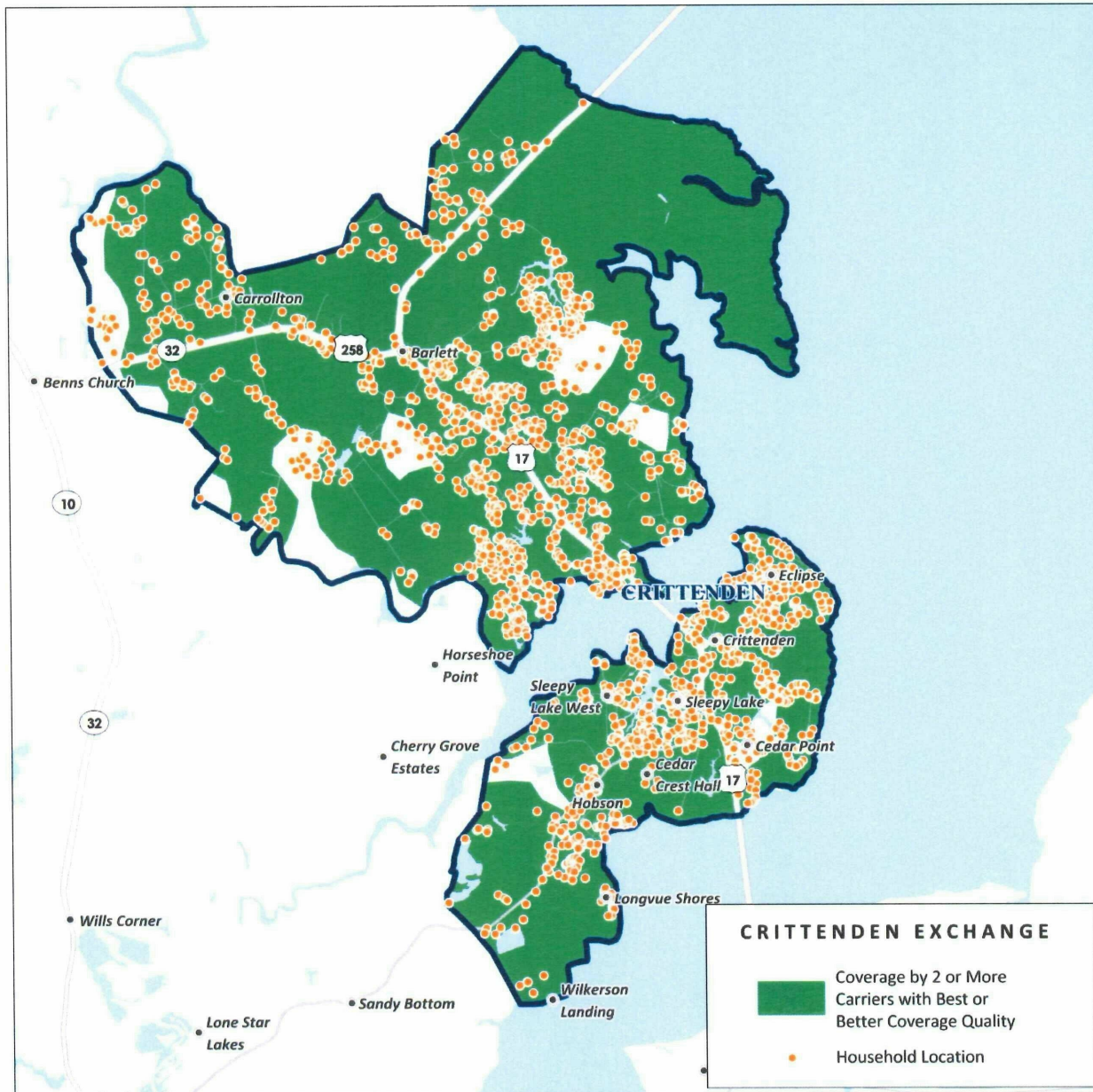
*2.225 Households
1,671 Covered*

*75.1% of
Households
Covered*

Chuckatuck – 2+ carriers with Best/Better coverage



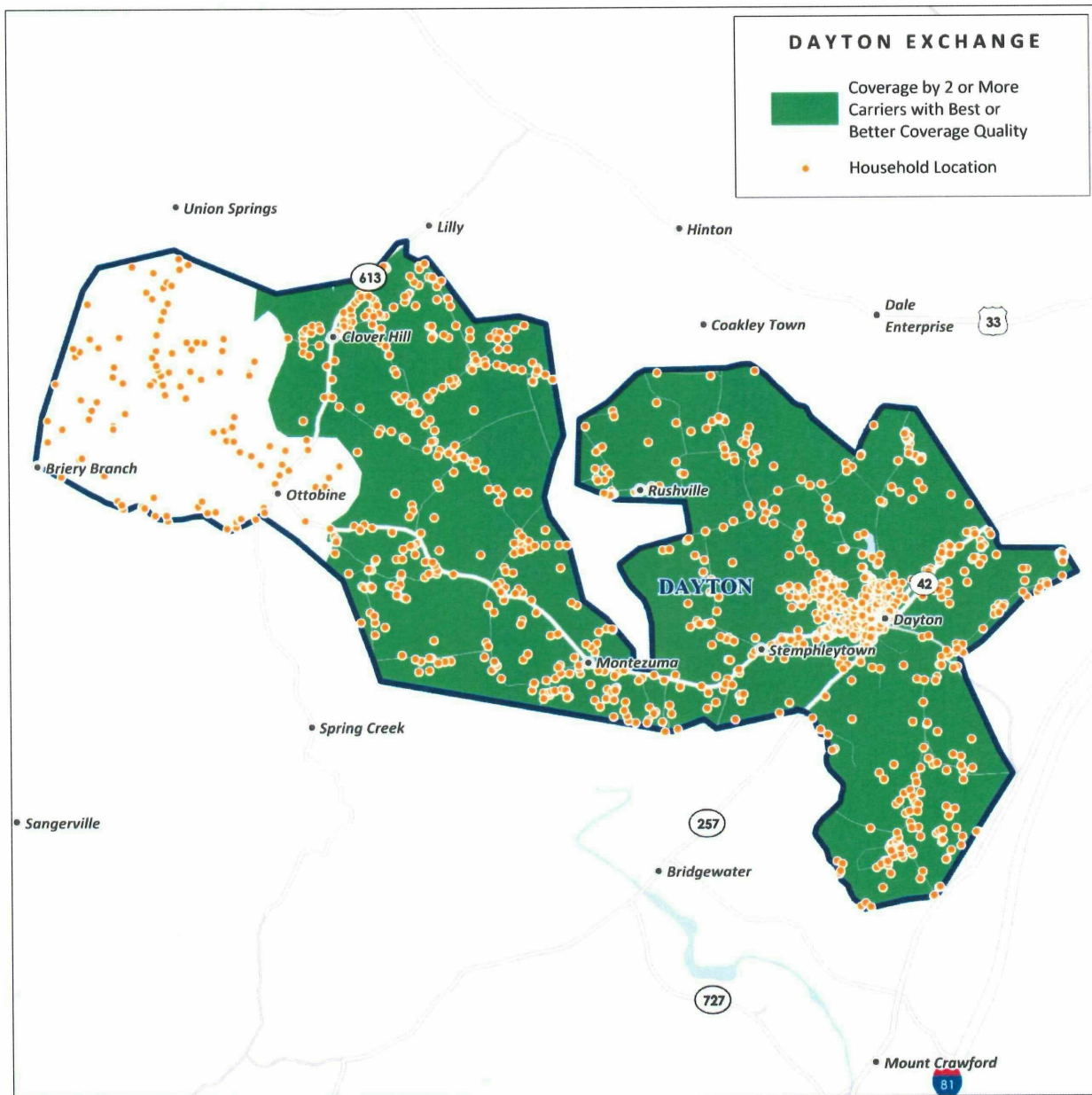
Crittenden – 2+ carriers with Best/Better coverage



*2,268 Households
2,127 Covered*

*93.8% of
Households
Covered*

Dayton – 2+ carriers with Best/Better coverage



*1,329 Households
1,214 Covered*

*91.3% of
Households
Covered*

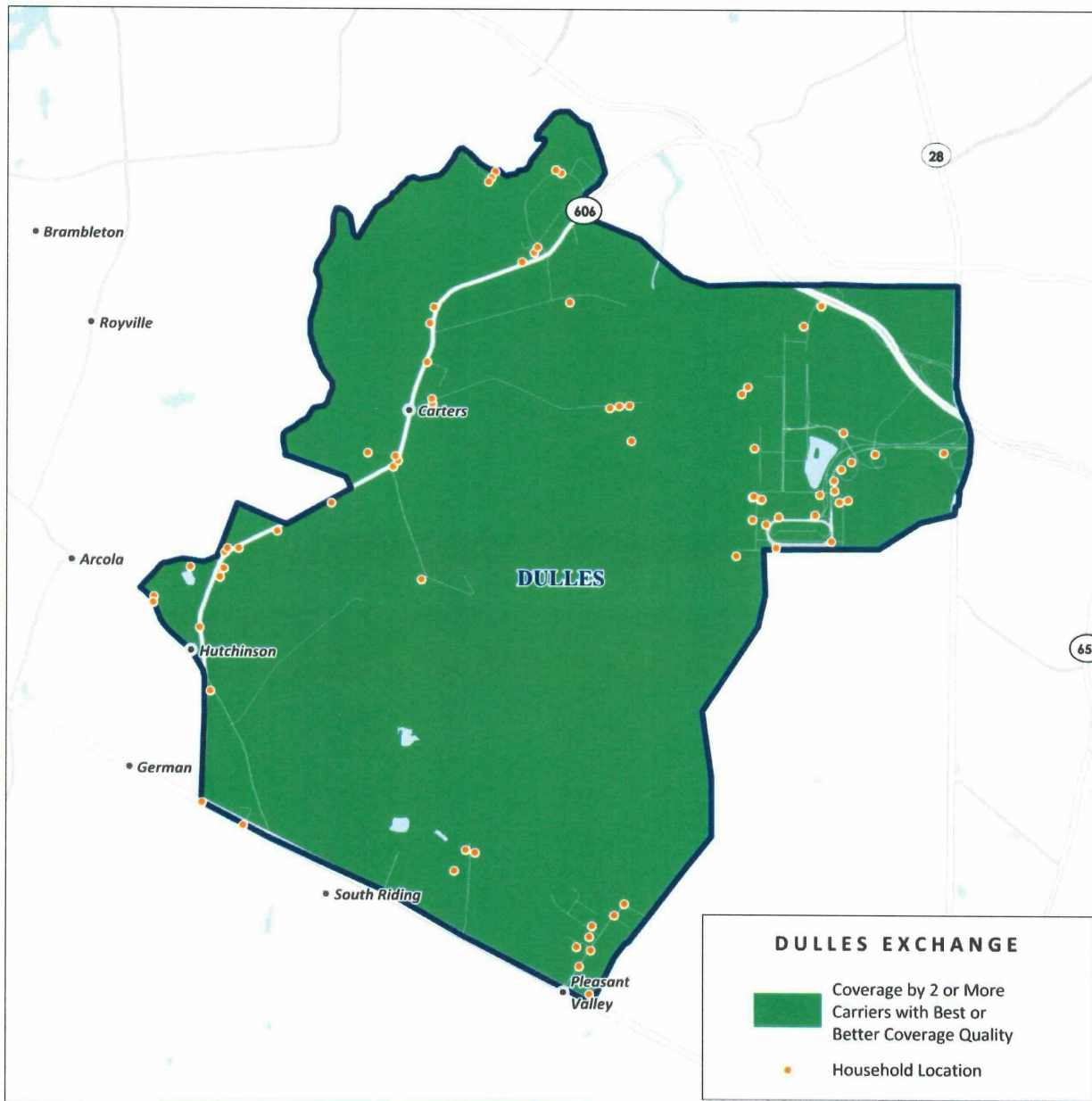
Doswell – 2+ carriers with Best/Better coverage



*229 Households
197 Covered*

*86.0% of
Households
Covered*

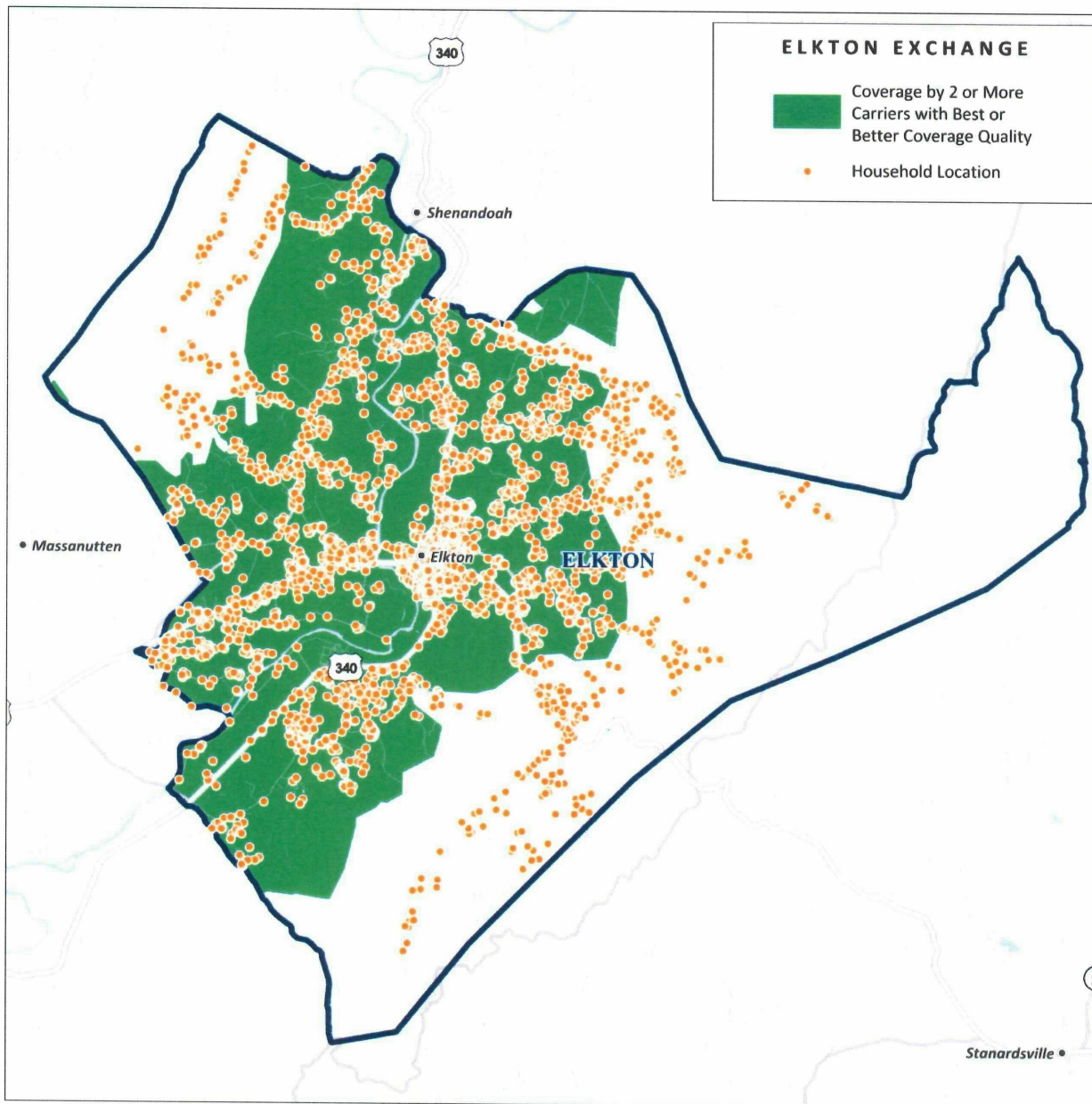
Dulles – 2+ carriers with Best/Better coverage



*75 Households
75 Covered*

*100% of
Households
Covered*

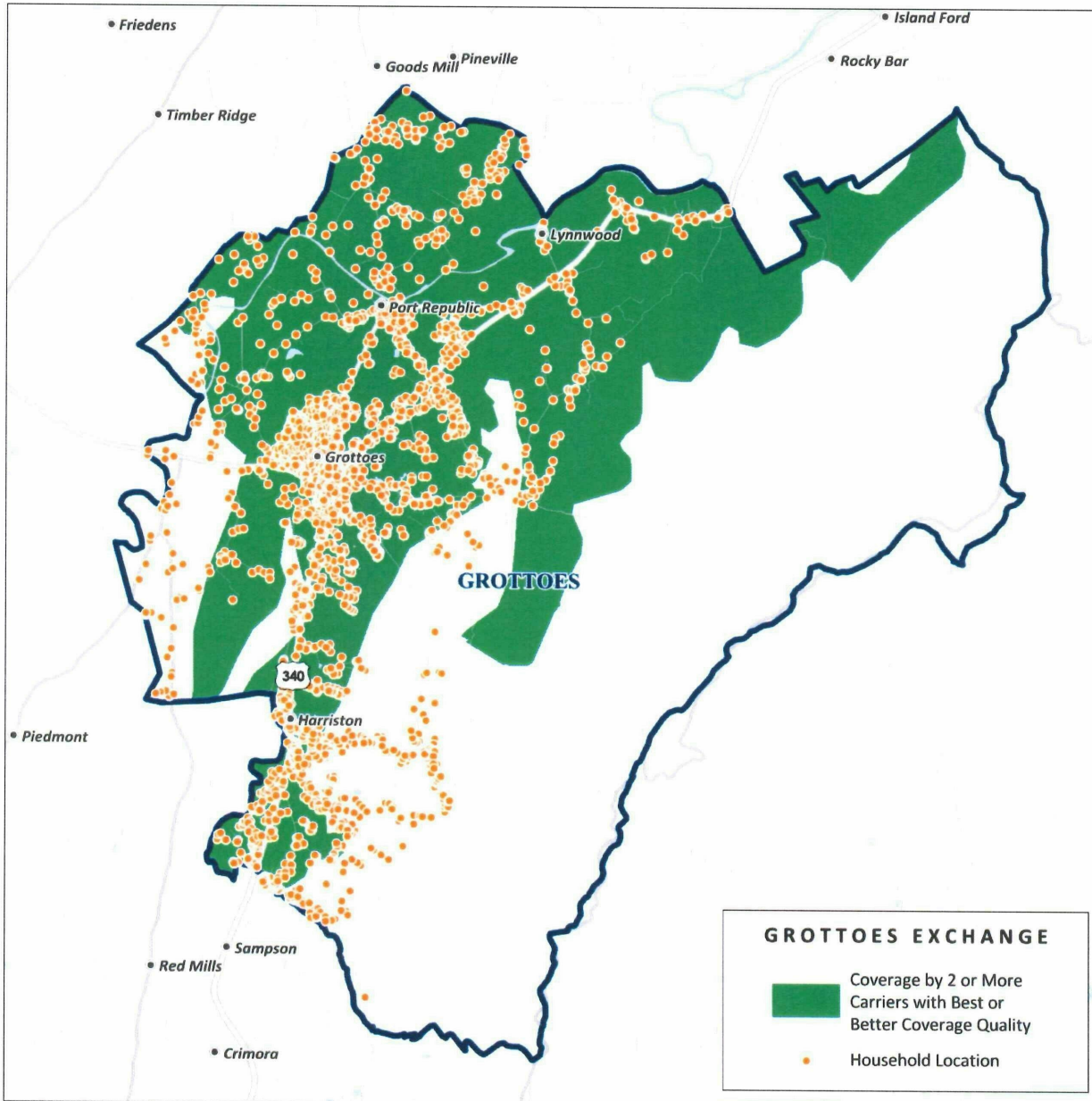
Elkton – 2+ carriers with Best/Better coverage



*3,948 Households
3,135 Covered*

*79.4% of
Households
Covered*

Grottoes – 2+ carriers with Best/Better coverage



*2,908 Households
2,387 Covered*

*82.1% of
Households
Covered*

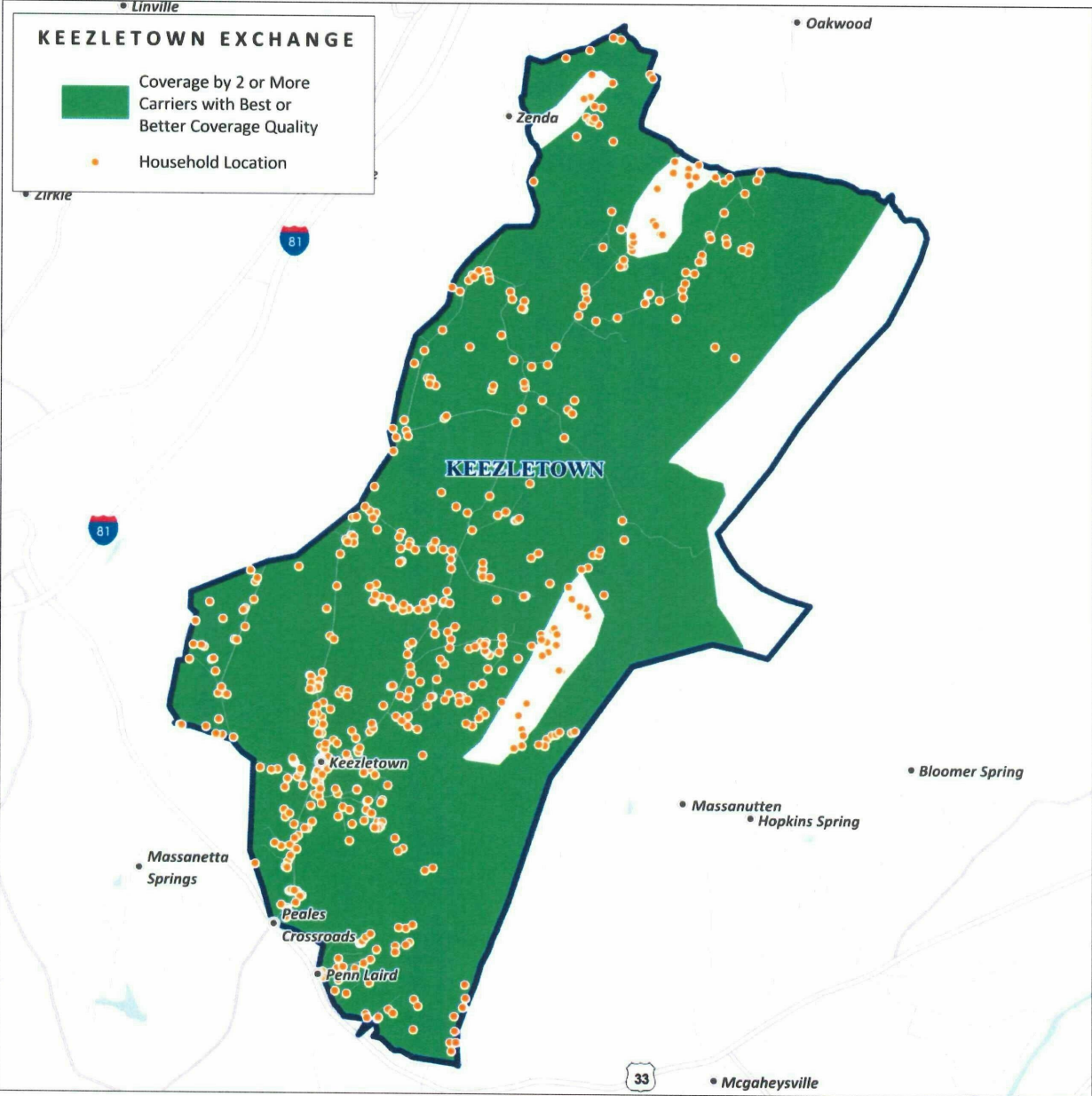
Holland – 2+ carriers with Best/Better coverage



*1,026 Households
816 Covered*

*79.5% of
Households
Covered*

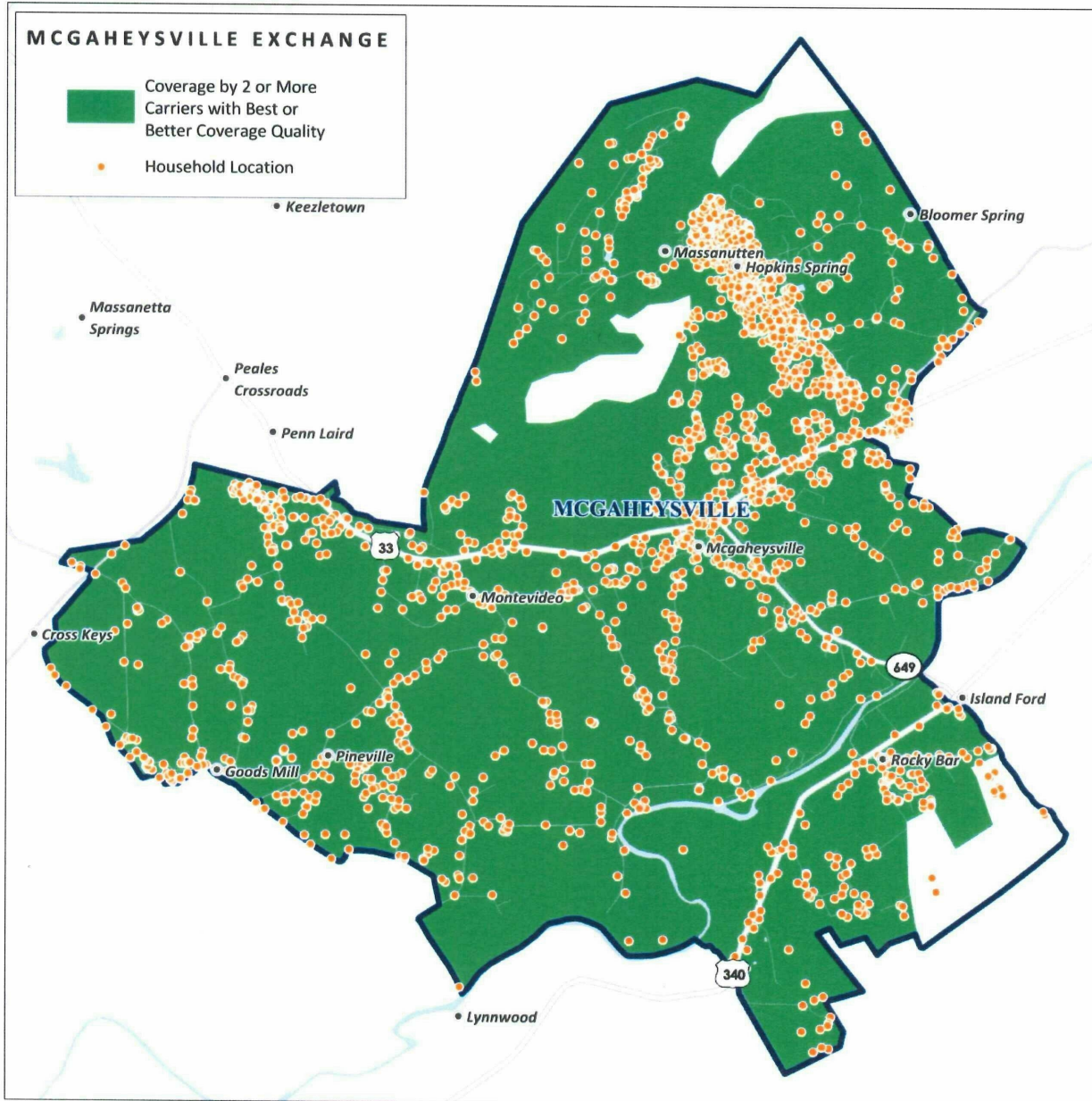
Keelzletown – 2+ carriers with Best/Better coverage



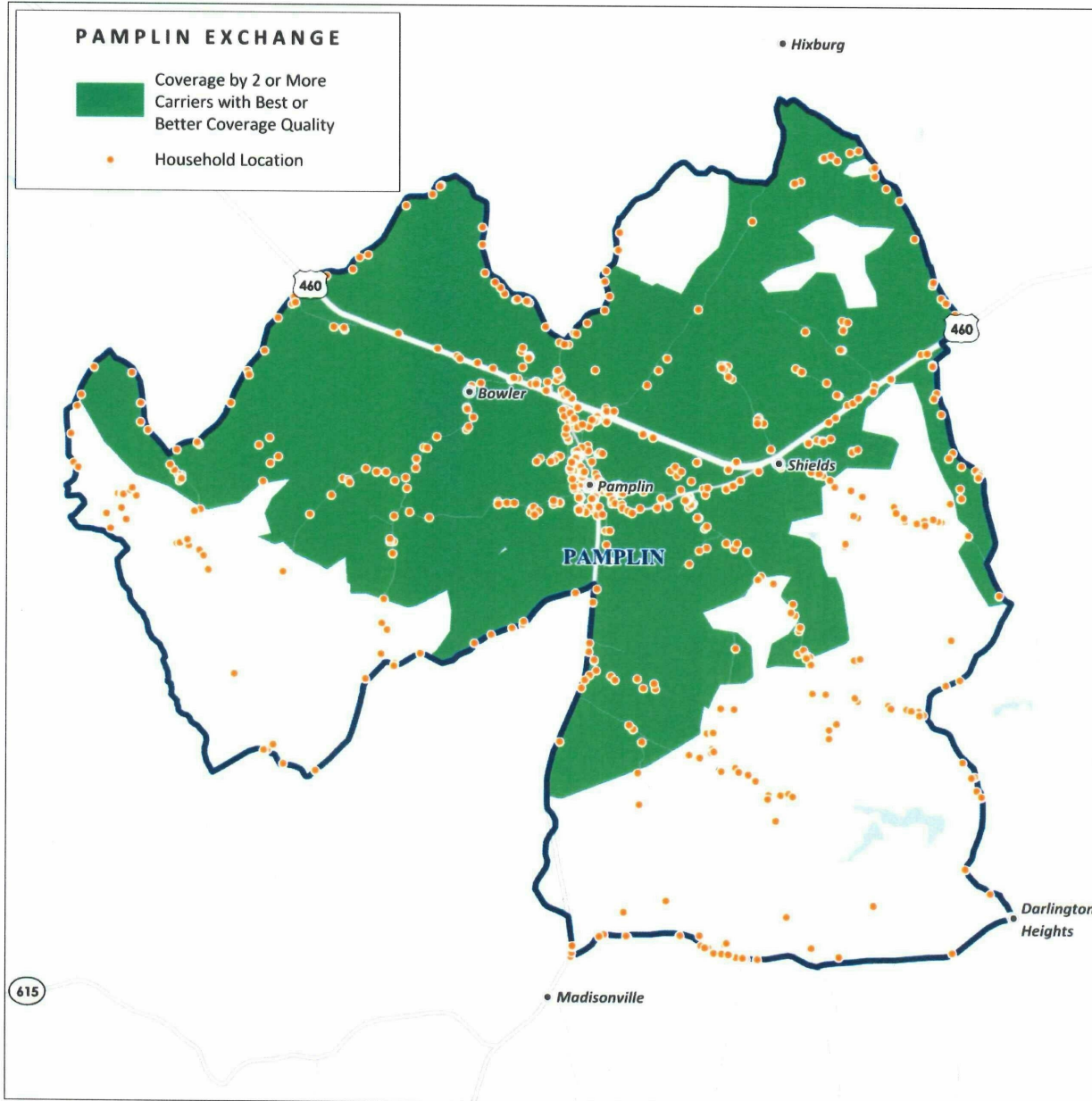
*521 Households
477 Covered*

*91.6% of
Households
Covered*

McGaheysville – 2+ carriers with Best/Better coverage



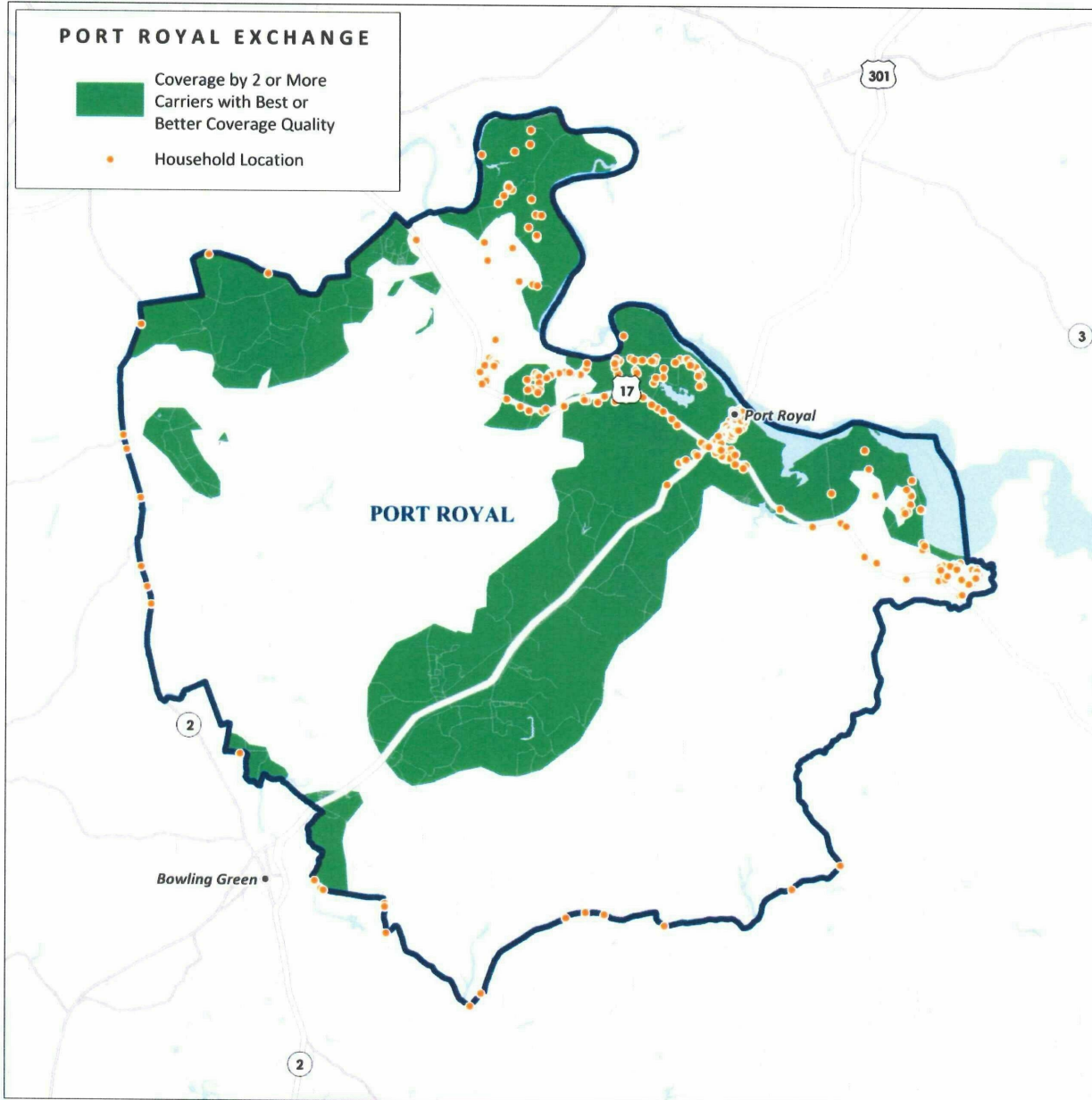
Pamplin – 2+ carriers with Best/Better coverage



*618 Households
499 Covered*

*80.7% of
Households
Covered*

Port Royal – 2+ carriers with Best/Better coverage



***388 Households
306 Covered***

***78.9% of
Households
Covered***

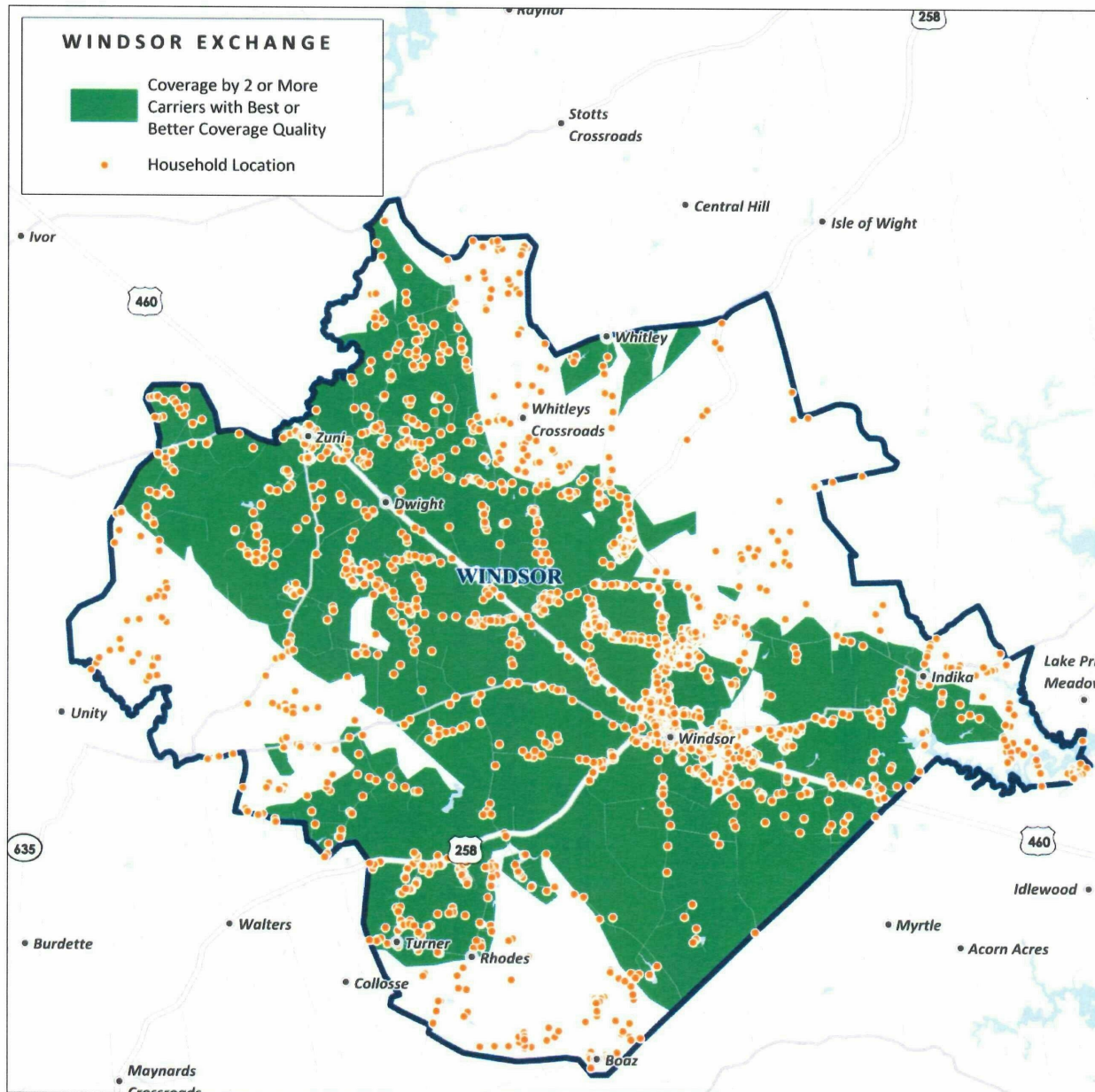
Raphine – 2+ carriers with Best/Better coverage



*1,714 Households
1,447 Covered*

*84.4% of
Households
Covered*

Windsor – 2+ carriers with Best/Better coverage



*2,485 Households
2,067 Covered*

*83.2% of
Households
Covered*



Cell Phones & Devices | Cell Phone Plans | Prepaid GoPhone | Services | Ringtones & More | Accessories | Packages & Deals

Get

Individual Plans

Family Plans

Prepaid Plans

Pick Your Plan

Pay As You Go

Data Plans

BlackBerry Plans

Laptop Connect Plans

To c
online price

Individual Cell Phone Plans

AT&T, the nation's fastest 3G Network, offers a variety of individual cell phone plans where you'll enjoy:

- Unlimited calling to other AT&T wireless customers with Mobile to Mobile while in the U.S.
- No roaming or long distance charges in the U.S.
- Saving unused minutes with Rollover®
- Unlimited calling on Nights and Weekends for most plans

On the road again? Check out our national coverage in areas you plan to visit.

- View national map
- View Canada map

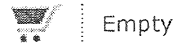
Nation Plans

Minutes	Monthly Cost	Rollover®	Unlimited Nights/Weekends*	Unlimited Mobile to Mobile	Additional Details
450	\$39.99	✓	Includes 5000	✓	View Details
900	\$59.99	✓	✓	✓	View Details
1350	\$79.99	✓	✓	✓	View Details
Unlimited	\$99.99	✓	✓	✓	View Details

Nation with Canada Plans

No long distance or roaming charges for voice calls between the US and Canada and a data pay-per-use rate of \$2/MB in Canada.

Minutes (U.S. + Canada)	Monthly Cost	Rollover®	Included Nights/Weekends (U.S. + Canada)	Unlimited Mobile to Mobile in the U.S.**	Additional Details
450	\$59.99	✓	Includes 1000	✓	View Details
900	\$79.99	✓	Includes 1000	✓	View Details
1350	\$99.99	✓	Includes 1000	✓	View Details
2000	\$119.99	✓	Includes 1000	✓	View Details
4000	\$169.99	✓	Includes 1000	✓	View Details



[Phones & Accessories](#)

[Rate Plans](#)

[Features](#)

[Data Cards & Accessories](#)

[S](#)

Family Plans
Individual Plans
Prepay Plans +
Messaging & Data Plans
Coverage Maps &
Locator

nTelos Individual Plans

nTelos plans give you more....More flexibility, more minutes, more freedom.

[➔ Dare to Compare with Nationwide 3G Unlimited Smartphone Plans](#) - Click here to learn more.

[➔ Share Unlimited Plans for as low as \\$19.99.](#) Click here to learn more.

[Click Here to view Unlimited Coverage Map.](#)

[Click Here to view nTelos Nations Coverage Map.](#)

Unlimited \$39.99

- Unlimited Minutes on the entire nTelos Network
- Nationwide Long Distance and Roaming Minutes available for select plans
- Unlimited Mobile to Mobile
- Unlimited Night & Weekend Minutes

Monthly Fee	Daytime Minutes	Evening & Weekend	Roaming Minutes	Long Distance	Overage Minutes	Mobile-to-Mobile
-------------	-----------------	-------------------	-----------------	---------------	-----------------	------------------

		MINUTES					
\$39.99	Unlimited	Unlimited	\$0.35	\$0.15	N/A	Unlimited	

Terms & Agreements

Unlimited \$49.99 + 100 Roam

- 100 Nationwide Roaming Minutes
- For a Limited Time Call 1-888-4-BST VLU to add a Shared Line to this plan for \$29.99.

Monthly Fee	Daytime Minutes	Evening & Weekend Minutes	Roaming Minutes	Long Distance	Overage Minutes	Mobile-to-Mobile
\$49.99	Unlimited	Unlimited	100	Included	N/A	Unlimited

Terms & Agreements

Unlimited \$59.99 + 300 Roam

- Unlimited Directory Assistance (NEW!)

Your Phone and Plan

Please choose a phone, a plan, and/or accessories to begin your order.

- 300 Nationwide Roaming Minutes
- For a Limited Time Call 1-888-4-BST VLU to add a Shared Line to this plan for \$24.99.

Monthly Fee	Daytime Minutes	Evening & Weekend Minutes	Roaming Minutes	Long Distance	Overage Minutes	Mobile-to-Mobile
\$59.99	Unlimited	Unlimited	300	Included	N/A	Unlimited

Terms & Agreements

Unlimited \$69.99 + 500 Roam

- Unlimited Text Messages
- Unlimited Picture Messages (NEW!)
- Unlimited Directory Assistance (NEW!)
- 500 Nationwide Roaming Minutes
- For a Limited Time Call 1-888-4-BST VLU to add a Shared Line to this plan for \$19.99.

Monthly Fee	Daytime Minutes	Evening & Weekend Minutes	Roaming Minutes	Long Distance	Overage Minutes	Mobile-to-Mobile
\$69.99	Unlimited	Unlimited	500	Included	N/A	Unlimited

Terms & Agreements

Nation

- Night & Weekend minutes starting at 7pm
- No roaming charges
- No long distance charges
- Select Plans include My World calling circle of 2,5,10, or 20 numbers

Monthly Fee	Daytime Minutes	Evening & Weekend Minutes	Roaming Minutes	Long Distance	Overage Minutes	Mobile-to-Mobile
\$29.99	300	Unlimited	Included	Included	\$0.40	Unlimited
\$39.99	600 + 2 MyWorld	Unlimited	Included	Included	\$0.40	Unlimited
\$49.99	1000 + 5 MyWorld	Unlimited	Included	Included	\$0.40	Unlimited
\$59.99	1200+10 MyWorld	Unlimited	Included	Included	\$0.35	Unlimited
\$79.99	1600+10 MyWorld	Unlimited	Included	Included	\$0.35	Unlimited
\$99.99	2200+20 MyWorld	Unlimited	Included	Included	\$0.25	Unlimited



[Packages](#) |
 [Phones](#) |
 [Plans](#) |
 [Services](#) |
 [Accessories](#) |
 [Promotions](#) |
 [Coverage Maps](#) |
 [Shopping Cart](#)

1 Plans |
 2 Phones |
 3 Services |
 4 Accessories

Got questions? Click to chat.

Order by phone
1-888-866-7509

Retrieve my Saved Cart |

You are shopping in Bridgewater, VA 22812

The list of plans has been filtered based on the criteria below. To see a full list of plans, click [Reset](#) below.

Narrow My List >

- Direct Connect
- Individual
- Share
- Business
- Mobile Broadband
- Any Mobile, AnytimeSM

"Best cell phone plan"
Any Mobile, AnytimeSM
 — Kiplinger's



[Read more](#) →

Simply EverythingSM

Everything your phone, PDA or smartphone can do nationwide - unlimited text, surf, email, listen, watch, plan.

This plan includes

- Unlimited data: Web surfing, email, BlackBerry Internet Services (BIS), GPS Navigation, Music Premier, TV Premier, NFL Mobile Live, NASCAR Sprint Cup MobileSM
 - Unlimited Direct Connect: Direct Connect and Group Connect (for capable phones)
 - Unlimited messaging: Text, pictures and video
 - Unlimited talk: Unlimited anytime minutes, nationwide long distance and no roaming charges
- More about what's included in this plan

	Anytime Minutes	Monthly Price	Additional Anytime
Best Value	Unlimited	\$99.99	Unlimited

Everything Data - with Any Mobile, AnytimeSM

Introducing Any Mobile, Anytime, forget about restrictive calling circles. Our Everything Data plans give you any mobile, anytime while on the Sprint Network. That's access to over 250 million U.S. mobile phones nationwide.

This plan includes

- Any Mobile, Anytime: Unlimited domestic calls from the Sprint network to and from ANY U.S. mobile phone regardless of carrier. Any network, any time.
 - Unlimited data: Web surfing, email, BlackBerry Internet Services (BIS), GPS Navigation, Music Premier, TV Premier, NFL Mobile Live, NASCAR Sprint Cup MobileSM
 - Unlimited Direct Connect: Direct Connect and Group Connect (for capable phones)
 - Unlimited messaging: Text, pictures and video
 - Talk: Night calling and weekends starting at 7 p.m., nationwide long distance and no roaming charges
- More about what's included in this plan

Anytime Minutes	Monthly Price	Additional Anytime Mir
450	\$69.99	45¢/min
900	\$89.99	40¢/min

Everything Messaging

Communicate without saying a word; with this plan, you can text, share and send your heart out.

This plan includes

Unlimited Direct Connect: Direct Connect and Group Connect (for capable phones)

Unlimited messaging: Text, pictures and video

Talk: Unlimited mobile to mobile, night calling and weekends starting at 7 p.m., nationwide long distance and no roaming charges

[More about what's included in this plan](#)

Anytime Minutes	Monthly Price	Additional Anytime Mir
450	\$49.99	45¢/min
900	\$69.99	40¢/min

Talk

Let your voice be heard with these voice-only plans.

This plan includes

Talk: Unlimited mobile to mobile, night calling and weekends starting at 7 p.m., nationwide long distance and no roaming charges

Unlimited Direct Connect: Direct Connect and Group Connect (for capable phones)

[More about what's included in this plan](#)

Additional plan options:

Unlimited Nights & Weekends

- Unlimited Nights & Weekends starting at 7 p.m.
- Nights and Weekends starting at 6 p.m.

Anytime Minutes	Monthly Price	Additional Anytime Mir
450	\$39.99	45¢/min
900	\$59.99	40¢/min

Basic

Get back to the basics with this plan ideal for the occasional caller.

This plan includes

Talk: Night calling and weekends starting at 9 p.m., nationwide long distance and no roaming charges

Unlimited Direct Connect: Direct Connect and Group Connect (for capable phones)

[More about what's included in this plan](#)

Additional plan options:

Unlimited Nights & Weekends

- Nights and Weekends - Starting at 9 p.m.
- Nights and Weekends - Starting at 8 p.m.
- Nights and Weekends - Starting at 7 p.m.

Anytime Minutes	Monthly Price	Additional Anytime Mir
200	\$29.99	45¢/min



Skip Navigation

Discover Shop Connect and Share Support
 Phones Plans Services Accessories Deals Business

Coverage Store

My T-Mobile: Ph

English Español

Home > Plans > Even More Plans

What type of plan are you looking for?

Even More
 Even More Plus
 Prepaid
 T-Mobile @Home
 Internet & Email
 Business

Plan Type

- Individual
- Family

Even MoreSM Plans

2 Year Contract required

Even More Plans offer the outstanding combination of affordability and dependable nationwide coverage. Unlimited plans start as low as \$59.99 per month. So now you can get even more of everything-except price.

Want lower monthly costs with no annual contract? Check out Even More Plus plans, which offer our best monthly rates.

All Even More Plans include:

- FREE nationwide T-Mobile to T-Mobile
- FREE Nights and Weekends
- FREE Overage Alerts for non-unlimited
- Whenever Minutes® you can use anytime

Pick your plan.

To see all available plans, please enter the ZIP Code where you'll be using your phone.

Individual Plans

Even More Individual Plans offer the outstanding combination of affordability and dependable nationwide coverage. Unlimited plans start as low as \$59.99 per month. So now you can get even more of everything except price.

Even More Unlimited Talk	Unlimited Whenever Minutes Unlimited Nights and Weekends Unlimited T-Mobile to T-Mobile calling	\$59.99
Even More 1000 Talk	1000 Whenever Minutes Unlimited Nights and Weekends Unlimited T-Mobile to T-Mobile calling	\$49.99
Even More 500 Talk	500 Whenever Minutes Unlimited Nights and Weekends Unlimited T-Mobile to T-Mobile calling	\$39.99

Family Plans

Even More Family Plans offer you and your crew the outstanding combination of affordability and dependable nationwide coverage. Unlimited plans start as low as \$99.99 per month. So now you can give your family even more for even less. Each plan includes two lines that share the features described below.

Even More for Families Unlimited Talk	Unlimited Whenever Minutes Unlimited Nights and Weekends Unlimited T-Mobile to T-Mobile calling	\$99.99
Even More for Families 1500 Talk	1500 Whenever Minutes	\$79.99

STEP 1 Select a calling plan | **STEP 2** Select a phone | **STEP 3** Select additional features | **STEP 4** Select accessories | **STEP 5** Add lines

PLANS **COVERAGE maps**

Plans available in Pamplin, VA

Change Location

WIDE AREA PLANS

NATIONAL PLANS

FAMILY PLANS

PREPAID PLANS

Which plan is right for you?

National Plans are ideal if you travel around the country and need to make calls freely in all 50 states. These plans offer complete freedom from roaming charges and with U.S. Cellular®, all Incoming Calls, Texts and Pix are free. See [coverage map](#) for service details.

	National Anytime Minutes	Monthly Rate	Additional Anytime Minutes	Included Roaming Minutes	Incoming Calls	Night & Weekend Minutes	Mobile-to-Mobile Minutes
National 450 Buy	450	\$39.99	\$0.49		Unlimited Included	9:00 P.M. \$8.00	Unlimited \$6.00
National 650 Buy	650	\$49.99	\$0.49		Unlimited Included	Unlimited 9:00 P.M.	Unlimited Included
National 1000 Promotion Buy	1000	\$49.99	\$0.49		Unlimited Included	Unlimited 7:00 P.M.	Unlimited Included
National 900 Buy	900	\$59.99	\$0.25		Unlimited Included	Unlimited 7:00 P.M.	Unlimited Included
National 1350 Buy	1350	\$79.99	\$0.25		Unlimited Included	Unlimited 7:00 P.M.	Unlimited Included

ORDER SUMMARY

Total Due Monthly What's this? **\$0.00/mo.**

Total Due Today What's this? **\$0.00**

[View Complete Order Details](#)

[Start Over](#)

LINE #1 DETAILS

CALLING PLAN

None Selected **\$0.00/mo.**

PHONE



None Selected **\$0.00**

ADDITIONAL FEATURES

None Selected **\$0.00/mo.**

ACCESSORIES

None Selected **\$0.00**

National 2000 	2000	\$99.99	\$0.25	Unlimited Included	Unlimited 7:00 P.M.	Unlimited Included
Unlimited National Plan 	Unlimited	\$99.99	\$0.00	Unlimited Included	Unlimited Included	Unlimited Included